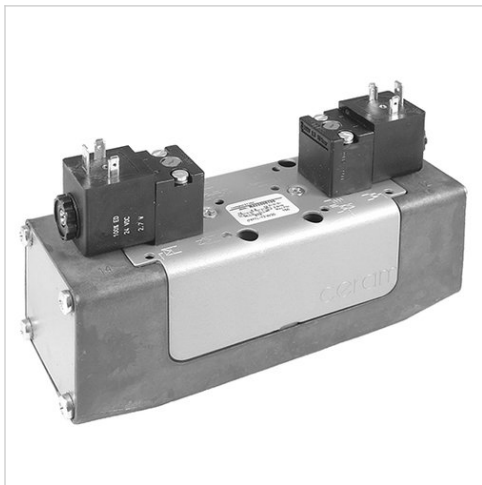


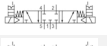
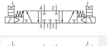
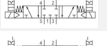
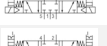
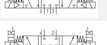
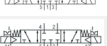

5/3-directional valve, Series CERAM™, size 4

- 5/3
- $Q_n = 7500$ l/min
- Pilot valve width : 30 mm CNOMO
- closed center
- Plate connection
- Electrical connection : Plug, EN 175301-803, form A
- Can be assembled into blocks
- Manual override : with detent, without detent
- double solenoid single solenoid
- Pilot : Internal External



Activation	Electrically
Blocking principle	Single base plate principle
Standards	ISO 5599-1, ISO 4
Working pressure min./max.	0 ... 10.3 bar
Control pressure min./max.	See table below
Ambient temperature min./max.	-15 ... 66 °C
Medium temperature min./max.	-15 ... 66 °C
Medium	Compressed air
Nominal flow Q_n	7500 l/min
Compressed air connection	according to ISO 5599-1
Protection class according to NEMA	NEMA 4
mounting screws	M8 with hexagon socket
Weight	See table below

Technical data

Part No.		MO		Compressed air connection	
					Pilot Exhaust
R432006292		T-R-T-R-T-R-T-R-T-R		closed center	Base plate ISO 5599-1
R432006293				closed center	Base plate ISO 5599-1
R432030338				closed center	Base plate ISO 5599-1
R432006290				closed center	Base plate ISO 5599-1
R432006291				closed center	Base plate ISO 5599-1
R432002461				closed center	Base plate ISO 5599-1
R432002463	-			closed center	Base plate ISO 5599-1

Part No.	Operational voltage		Operational voltage	
	DC	AC 50 Hz	AC 60 Hz	Operational voltage
R432006292	12 V	-	-	-
R432006293	24 V	-	-	-
R432030338	-	24 V	24 V	24 V
R432006290	-	110 V	120 V	120 V
R432006291	-	220 V	240 V	240 V
R432002461	-	-	-	-
R432002463	-	-	-	-

Part No.	Voltage tolerance		Voltage tolerance		Power consumption	
	DC	AC 50 Hz	AC 60 Hz	DC	DC	DC
R432006292	-10% / +10%	-	-	-	2.7 W	2.7 W
R432006293	-10% / +10%	-	-	-	2.7 W	2.7 W
R432030338	-	-10% / +10%	-10% / +10%	-	-	-
R432006290	-	-10% / +10%	-10% / +10%	-	-	-
R432006291	-	-10% / +10%	-10% / +10%	-	-	-
R432002461	-	-	-	-	-	-
R432002463	-	-	-	-	-	-

Part No.	Holding power		Switch-on power		Pilot
	AC 50 Hz	AC 60 Hz	AC 50 Hz	AC 60 Hz	
R432006292	-	-	-	-	Internal
R432006293	-	-	-	-	Internal
R432030338	3.7 VA	3.7 VA	6.4 VA	6.4 VA	Internal
R432006290	3.7 VA	3.7 VA	6.4 VA	6.4 VA	Internal
R432006291	3.7 VA	3.7 VA	6.4 VA	6.4 VA	Internal
R432002461	-	-	-	-	External
R432002463	-	-	-	-	Internal

Part No.	Control pressure min./max.	Valve plug connector
R432006292	2.5 ... 10.3 bar	Without valve plug connector
R432006293	2.5 ... 10.3 bar	Without valve plug connector
R432030338	2.5 ... 10.3 bar	Without valve plug connector
R432006290	2.5 ... 10.3 bar	Without valve plug connector
R432006291	2.5 ... 10.3 bar	Without valve plug connector
R432002461	-0.8 ... 10.3 bar	Without valve plug connector

Part No.	Control pressure min./max.	Valve plug connector
R432002463	2.5 ... 10.3 bar	Without valve plug connector

Part No.	basic valve with electrical connector	Weight
R432006292	-	2.54 kg
R432006293	-	2.45 kg
R432030338	-	-
R432006290	-	2.59 kg
R432006291	-	2.59 kg
R432002461	Basic valve without coil	2.41 kg
R432002463	Basic valve without coil	2.41 kg

Nominal flow Q_n at 6 bar and $\Delta p = 1$ bar

MO = Manual override

Technical information

The min. control pressure must be adhered to, since otherwise faulty switching and valve failure may result!

The pressure dew point must be at least 15 °C under ambient and medium temperature and may not exceed 3 °C .

The oil content of compressed air must remain constant during the life cycle.

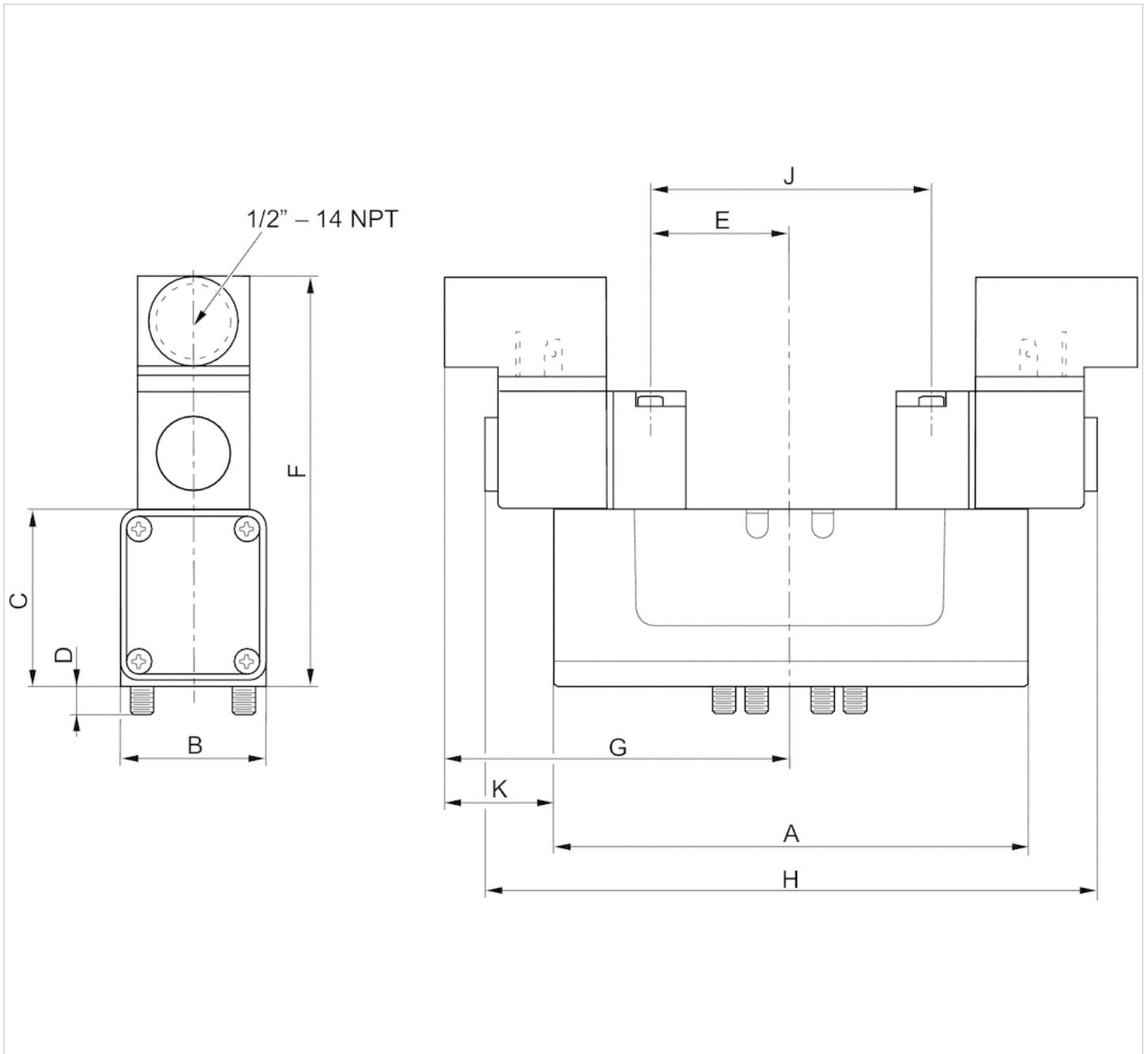
Use only the approved oils from AVENTICS. Further information can be found in the "Technical information" document (available in the MediaCentre).

Technical information

Material	
Housing	Die cast zinc, painted gray Die-cast aluminum, painted gray

Dimensions

Dimensions in inches



Dimensions in inches

Part No.	A	B	C	D	E	F	G	H	J	K
R432006292	8.62	3.09	2.89	0.41	1.62	5.32	6.65	13.31	3.25	0.68
R432006293	8.62	3.09	2.89	0.41	1.62	5.32	6.65	13.31	3.25	0.68
R432030338	8.62	3.09	2.89	0.41	1.62	5.32	6.65	13.31	3.25	0.68
R432006290	8.62	3.09	2.89	0.41	1.62	5.32	6.65	13.31	3.25	0.68
R432006291	8.62	3.09	2.89	0.41	1.62	5.32	6.65	13.31	3.25	0.68
-	-	-	-	-	-	-	-	-	-	-
R432002463	8.62	3.09	2.89	0.41	1.62	5.32	6.65	13.31	3.25	0.68

Efficient pneumatic solutions, our program: cylinders and drives, valves and valve systems, air supply management



Visit us: [Emerson.com/Aventics](https://www.emerson.com/Aventics)

Your local contact: [Emerson.com/contactus](https://www.emerson.com/contactus)



[Emerson.com](https://www.emerson.com)



[Facebook.com/EmersonAutomationSolutions](https://www.facebook.com/EmersonAutomationSolutions)



[LinkedIn.com/company/Emerson-Automation-Solutions](https://www.linkedin.com/company/Emerson-Automation-Solutions)



[Twitter.com/EMR_Automation](https://twitter.com/EMR_Automation)

An example configuration is depicted on the title page. The delivered product may thus vary from that in the illustration. Subject to change. This Document, as well as the data, specifications and other information set forth in it, are the exclusive property of AVENTICS GmbH. It may not be reproduced or given to third parties without its consent. Only use the AVENTICS products shown in industrial applications. Read the product documentation completely and carefully before using the product. Observe the applicable regulations and laws of the respective country. When integrating the product into applications, note the system manufacturer's specifications for safe use of the product. The data specified only serve to describe the product. No statements concerning a certain condition or suitability for a certain application can be derived from our information. The information given does not release the user from the obligation of own judgement and verification. It must be remembered that the products are subject to a natural process of wear and aging.

The Emerson logo is a trademark and service mark of Emerson Electric Co. Brand logotype are registered trademarks of one of the Emerson family of companies. All other marks are the property of their respective owners. © 2020 Emerson Electric Co. All rights reserved.
2020-12



CONSIDER IT SOLVED™