

Series H-Controlair®

- Version HE-2, OUT port – delivers full inlet pressure when lever is moved 10° clockwise from “Off” (facing lever side of valve).
- $Q_n = 900 \text{ l/min}$
- Actuating element Lever
- Internal thread
- Poppet valve
- HE-2-X HE-2-FX HE-2-LX



Type	Poppet valve
Working pressure min./max.	0.1 ... 14 bar
Adjustment range min./max.	See table below
Ambient temperature min./max.	-40 ... 70 °C
Medium temperature min./max.	-40 ... 70 °C
Medium	Compressed air
Nominal flow Q_n	900 l/min
Hysteresis	0.07 bar
Weight	2.3 kg

Technical data

Part No.	Type	Compressed air connection Input	Compressed air connection Output
R431002937	HE-2-X	1/4 NPT	1/4 NPT
R431002938	HE-2-X	1/4 NPT	1/4 NPT
R431002939	HE-2-X	1/4 NPT	1/4 NPT
R431009362	HE-2-FX	1/4 NPT	1/4 NPT
R431002912	HE-2-FX	1/4 NPT	1/4 NPT
R431002913	HE-2-FX	1/4 NPT	1/4 NPT
R431002914	HE-2-FX	1/4 NPT	1/4 NPT
R431002915	HE-2-FX	1/4 NPT	1/4 NPT
R431002916	HE-2-LX	1/4 NPT	1/4 NPT
R431002917	HE-2-LX	1/4 NPT	1/4 NPT
R431002918	HE-2-LX	1/4 NPT	1/4 NPT

Part No.	Compressed air connection type Output	Adjustment range min./max.
R431002937	Internal thread	0.1 ... 4.5 bar
R431002938	Internal thread	0.1 ... 6.9 bar
R431002939	Internal thread	0.1 ... 8.6 bar
R431009362	Internal thread	0.1 ... 10.4 bar
R431002912	Internal thread	0.1 ... 4.5 bar
R431002913	Internal thread	0.1 ... 6.9 bar
R431002914	Internal thread	0.1 ... 8.6 bar
R431002915	Internal thread	0.1 ... 10.4 bar
R431002916	Internal thread	0.1 ... 4.5 bar
R431002917	Internal thread	0.1 ... 6.9 bar

Part No.	Compressed air connection type Output	Adjustment range min./max.
R431002918	Internal thread	0.1 ... 8.6 bar

HE-2-x - The lever returns from the extreme position to the valve's "clutch" or "Off" position when the operating force is removed., HE-2-FX- The lever remains in the position where released. The friction coefficient for the holding force is adjustable., HE-2-LX - The lever returns to the valve's "Neutral" or "Off" position when manually moved OUT of the latch position (extreme travel position).

Technical information

IN port = pressure supply

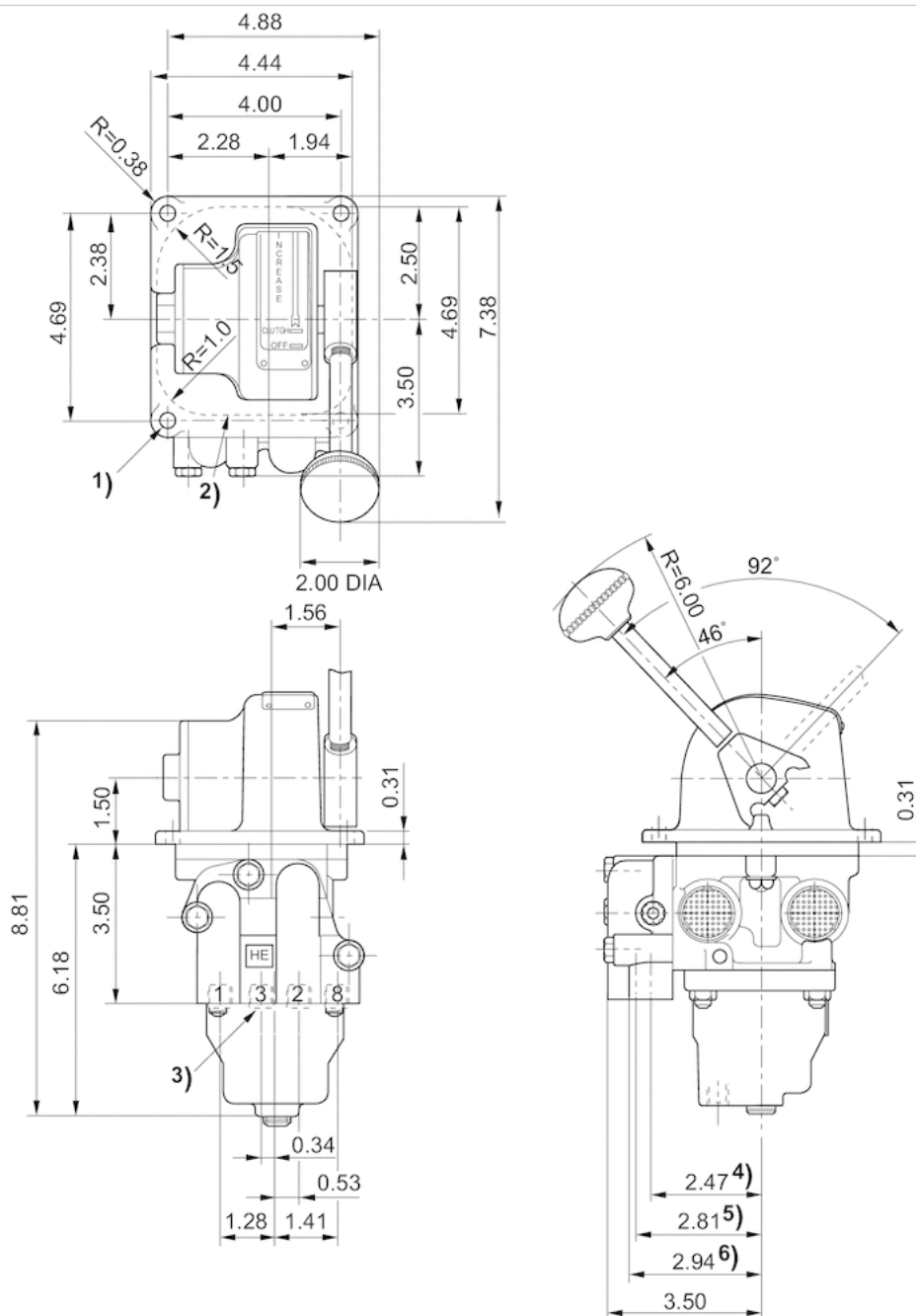
OUT port – delivers full inlet pressure when lever is moved 10° clockwise from "Off" (facing lever side of valve).

Technical information

Material	
Housing	Die-cast aluminum
Pedal	Die-cast aluminum
Seals	Acrylonitrile butadiene rubber

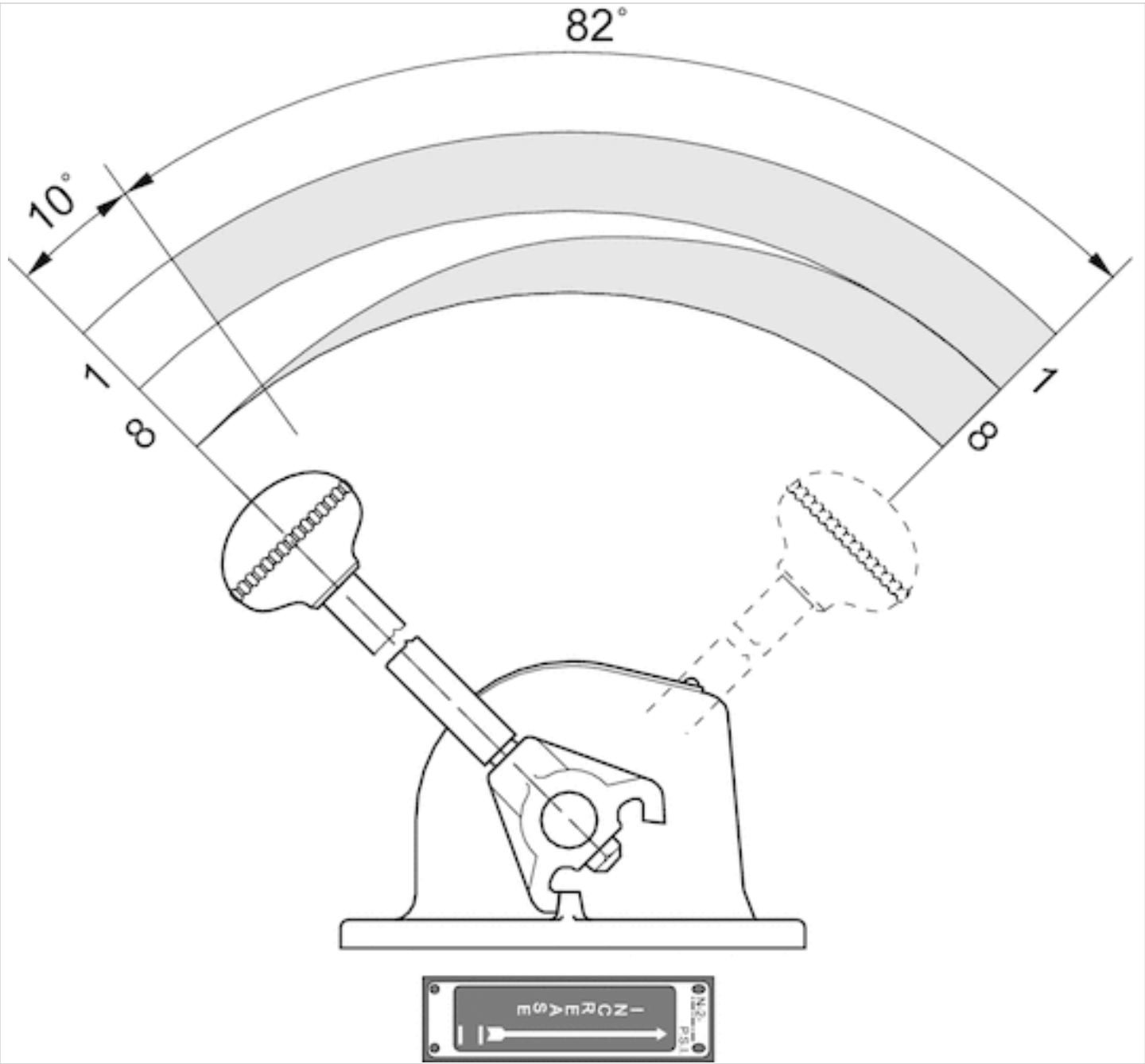
Dimensions

Dimensions in inches



- 1) Mounting hole $\varnothing 34$
- 2) panel mounting hole
- 3) 1/4 - 13 NPT
- 4) Port 3, 5
- 5) Port 1
- 6) Port 2

Function



Pressure vs. lever travel

Efficient pneumatic solutions, our program: cylinders and drives, valves and valve systems, air supply management



Visit us: [Emerson.com/Aventics](https://emerson.com/aventics)

Your local contact: [Emerson.com/contactus](https://emerson.com/contactus)



Emerson.com



Facebook.com/EmersonAutomationSolutions



LinkedIn.com/company/Emerson-Automation-Solutions



Twitter.com/EMR_Automation

An example configuration is depicted on the title page. The delivered product may thus vary from that in the illustration. Subject to change. This Document, as well as the data, specifications and other information set forth in it, are the exclusive property of AVENTICS GmbH. It may not be reproduced or given to third parties without its consent. Only use the AVENTICS products shown in industrial applications. Read the product documentation completely and carefully before using the product. Observe the applicable regulations and laws of the respective country. When integrating the product into applications, note the system manufacturer's specifications for safe use of the product. The data specified only serve to describe the product. No statements concerning a certain condition or suitability for a certain application can be derived from our information. The information given does not release the user from the obligation of own judgement and verification. It must be remembered that the products are subject to a natural process of wear and aging.

The Emerson logo is a trademark and service mark of Emerson Electric Co. Brand logotype are registered trademarks of one of the Emerson family of companies. All other marks are the property of their respective owners. © 2020 Emerson Electric Co. All rights reserved.
2020-12



CONSIDER IT SOLVED™