

Series H-Controlair®

- Version H-4
- $Q_n = 900 \text{ l/min}$
- Actuating element Rotary knob
- Internal thread
- Poppet valve



Type	Poppet valve
Working pressure min./max.	0.1 ... 14 bar
Adjustment range min./max.	See table below
Ambient temperature min./max.	-40 ... 70 °C
Medium temperature min./max.	-40 ... 70 °C
Medium	Compressed air
Nominal flow Q_n	900 l/min
Hysteresis	0.07 bar
Weight	2.3 kg

Technical data

Part No.	Compressed air connection Input	Compressed air connection Output	Compressed air connection type Output
R431002818	1/4 NPT	1/4 NPT	Internal thread
R431002819	1/4 NPT	1/4 NPT	Internal thread
R431002820	1/4 NPT	1/4 NPT	Internal thread
R431002821	1/4 NPT	1/4 NPT	Internal thread
R431002822	1/4 NPT	1/4 NPT	Internal thread
R431002885	1/4 NPT	1/4 NPT	Internal thread
R431002886	1/4 NPT	1/4 NPT	Internal thread

Part No.	Adjustment range min./max.
R431002818	0.7 ... 4.5 bar
R431002819	0.7 ... 6.9 bar
R431002820	0.7 ... 8.6 bar
R431002821	0.7 ... 10.4 bar
R431002822	0.7 ... 2 bar
R431002885	0.7 ... 4.5 bar
R431002886	0.7 ... 6.9 bar

Technical information

IN port = pressure supply

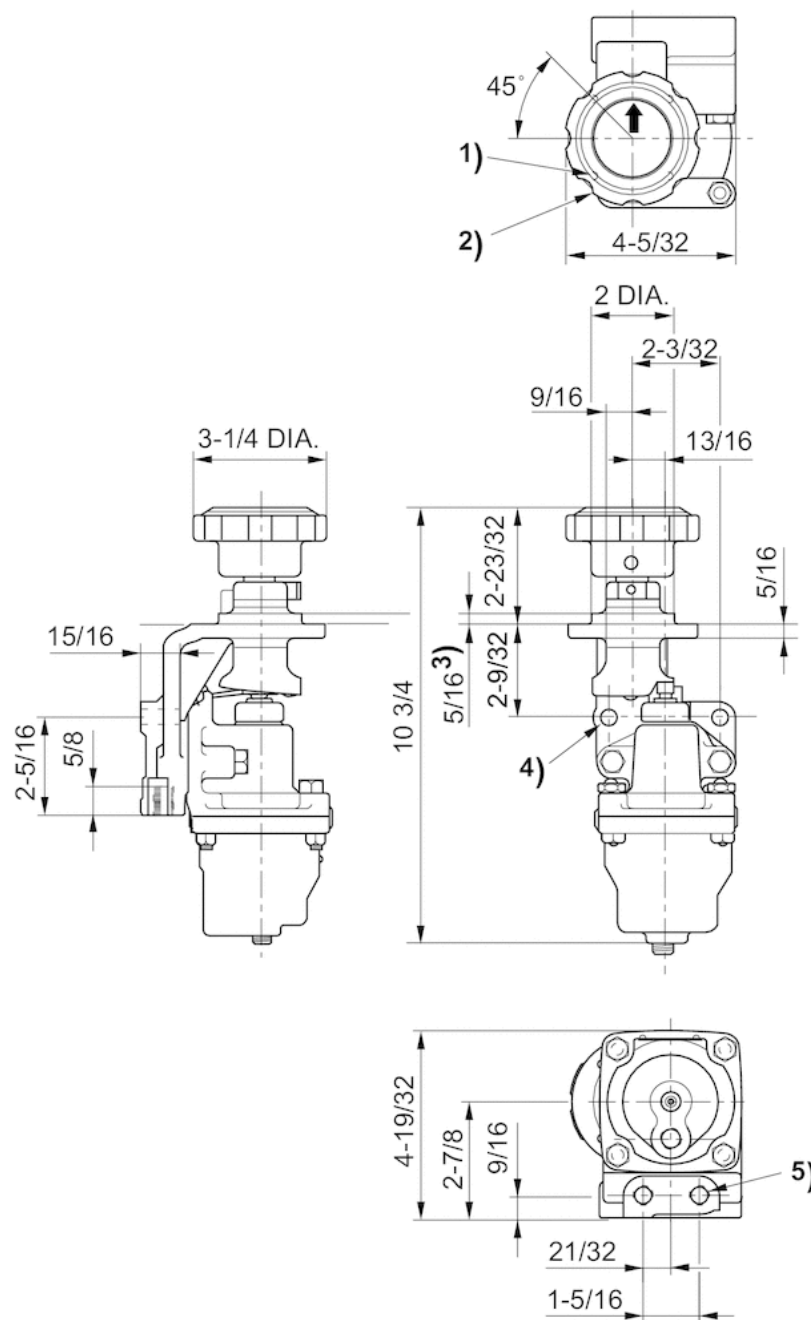
OUT port – delivers increasing pressure when lever is moved clockwise from “Off” (facing lever side of valve).

Technical information

Material	
Housing	Die-cast aluminum
Pedal	Die-cast aluminum
Seals	Acrylonitrile butadiene rubber

Dimensions

Dimensions in inches



1) #10-24 NC-3, 4 holes equally spaced on 2-9/16 diameter

2) Max. effective handle rotation 240° (adjustable)

3) Two holes Ø13/32

4) Two holes 1/4-18 NPT

Efficient pneumatic solutions, our program: cylinders and drives, valves and valve systems, air supply management



Visit us: [Emerson.com/Aventics](https://emerson.com/aventics)

Your local contact: [Emerson.com/contactus](https://emerson.com/contactus)



Emerson.com



Facebook.com/EmersonAutomationSolutions



LinkedIn.com/company/Emerson-Automation-Solutions



Twitter.com/EMR_Automation

An example configuration is depicted on the title page. The delivered product may thus vary from that in the illustration. Subject to change. This Document, as well as the data, specifications and other information set forth in it, are the exclusive property of AVENTICS GmbH. It may not be reproduced or given to third parties without its consent. Only use the AVENTICS products shown in industrial applications. Read the product documentation completely and carefully before using the product. Observe the applicable regulations and laws of the respective country. When integrating the product into applications, note the system manufacturer's specifications for safe use of the product. The data specified only serve to describe the product. No statements concerning a certain condition or suitability for a certain application can be derived from our information. The information given does not release the user from the obligation of own judgement and verification. It must be remembered that the products are subject to a natural process of wear and aging.

The Emerson logo is a trademark and service mark of Emerson Electric Co. Brand logotype are registered trademarks of one of the Emerson family of companies. All other marks are the property of their respective owners. © 2020 Emerson Electric Co. All rights reserved.
2020-12



CONSIDER IT SOLVED™