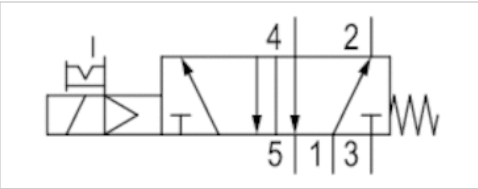




5/2-directional valve, Series LS04-AF

- 5/2
- Qn = 180-310 l/min
- Pipe connection
- Compressed air connection output : Ø 4 Ø 6
- Electrical connection : Plug, M8, 3-pin
- Manual override : with detent
- single solenoid
- With spring return
- Pilot : Internal



Type	Spool valve, positive overlapping
Activation	Electrically
Pilot	Internal
Sealing principle	Soft sealing
Working pressure min./max.	3 ... 7 bar
Ambient temperature min./max.	-10 ... 50 °C
Medium temperature min./max.	-10 ... 50 °C
Medium	Compressed air
Max. particle size	5 µm
Oil content of compressed air	0 ... 5 mg/m³
Nominal flow Qn	See table below
Connector standard	DIN EN 60947-5-2
Protection class acc. to DIN EN 61140	Class III
Electrically	
Protection class with connection	IP65
Protective circuit	Z-diode
LED status display	Yellow
Duty cycle	100 %
Typ. switch-on time	10 ms
Typ. switch-off time	22 ms
Generic emission standard in accordance EN 61000-6-4:2002 with	
Generic immunity standard in accordance IEC 61000-6-2:2005 with	
mounting screws	M3
Mounting screw tightening torque	0,5 Nm
Weight	0,053 kg

Technical data

Part No.	MO	Compressed air connection	
		Input	Output
R422103565		Ø 4	Ø 4
R422103566		Ø 6	Ø 6

Part No.	Compressed air connection	Operational voltage	Voltage tolerance
	Exhaust		DC
R422103565	Ø 4	24 V	-10% / +10%
R422103566	Ø 6	24 V	-10% / +10%

Part No.	Power consumption	Flow conductance	Flow conductance	Nominal flow Qn
	DC	b	C-value	
R422103565	1,3 W	0,3	0,8 l/(s*bar)	180 l/min
R422103566	1,3 W	0,27	1,5 l/(s*bar)	310 l/min

Nominal flow Qn at 6 bar and $\Delta p = 1$ bar, MO = Manual override

Technical information

The min. control pressure must be adhered to, since otherwise faulty switching and valve failure may result!

The pressure dew point must be at least 15 °C under ambient and medium temperature and may not exceed 3 °C .

The oil content of compressed air must remain constant during the life cycle.

Use only the approved oils from AVENTICS. Further information can be found in the "Technical information" document (available in the MediaCentre).

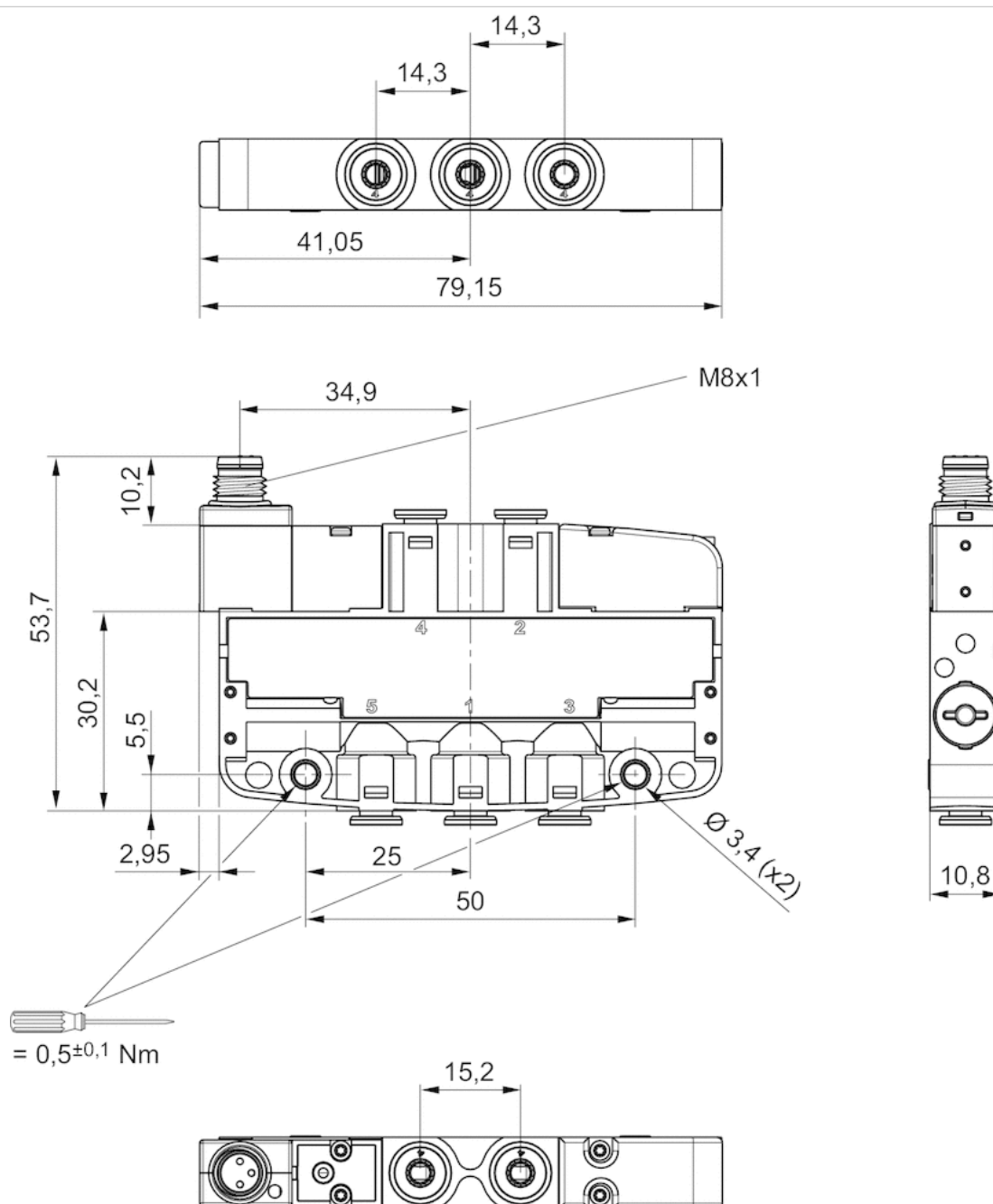
A duty cycle of 100 percent is only valid for single valves.

Technical information

Material	
Housing	Polyoxymethylene
Seals	Acrylonitrile butadiene rubber Hydrogenated nitrile butadiene rubber Polyurethane

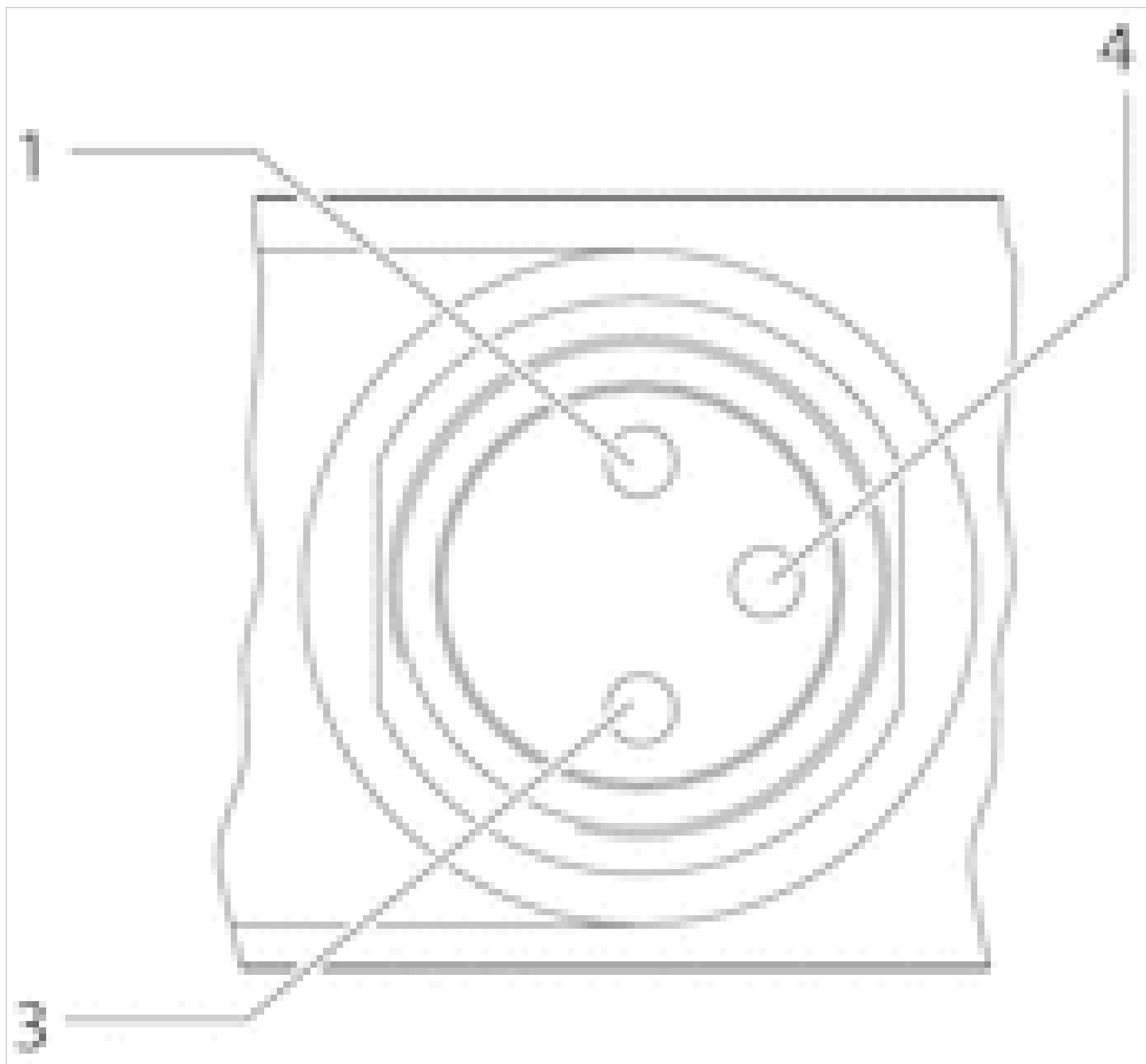
Dimensions

dimensions, single solenoid



Pin assignments

PIN assignment for valve plug connectors, 3-pin



1) Pin not assigned

3) 0 V

4) 24 V

Note: Bi-polar protective circuit to prevent overvoltage

Efficient pneumatic solutions, our program: cylinders and drives, valves and valve systems, air supply management



Visit us: [Emerson.com/Aventics](https://www.emerson.com/Aventics)

Your local contact: [Emerson.com/contactus](https://www.emerson.com/contactus)



Emerson.com



Facebook.com/EmersonAutomationSolutions



LinkedIn.com/company/Emerson-Automation-Solutions



Twitter.com/EMR_Automation

An example configuration is depicted on the title page. The delivered product may thus vary from that in the illustration. Subject to change. This Document, as well as the data, specifications and other information set forth in it, are the exclusive property of AVENTICS GmbH. It may not be reproduced or given to third parties without its consent. Only use the AVENTICS products shown in industrial applications. Read the product documentation completely and carefully before using the product. Observe the applicable regulations and laws of the respective country. When integrating the product into applications, note the system manufacturer's specifications for safe use of the product. The data specified only serve to describe the product. No statements concerning a certain condition or suitability for a certain application can be derived from our information. The information given does not release the user from the obligation of own judgement and verification. It must be remembered that the products are subject to a natural process of wear and aging.

The Emerson logo is a trademark and service mark of Emerson Electric Co. Brand logotype are registered trademarks of one of the Emerson family of companies. All other marks are the property of their respective owners. © 2020 Emerson Electric Co. All rights reserved.
2020-12



CONSIDER IT SOLVED™