

Bearing block AB7-BV, Series CM1

- with fixed bearing
- Cylinder mounting in accordance with ISO 15552
- Suitable piston Ø 32 40 50 63 80 100 mm



Standards

ISO 15552

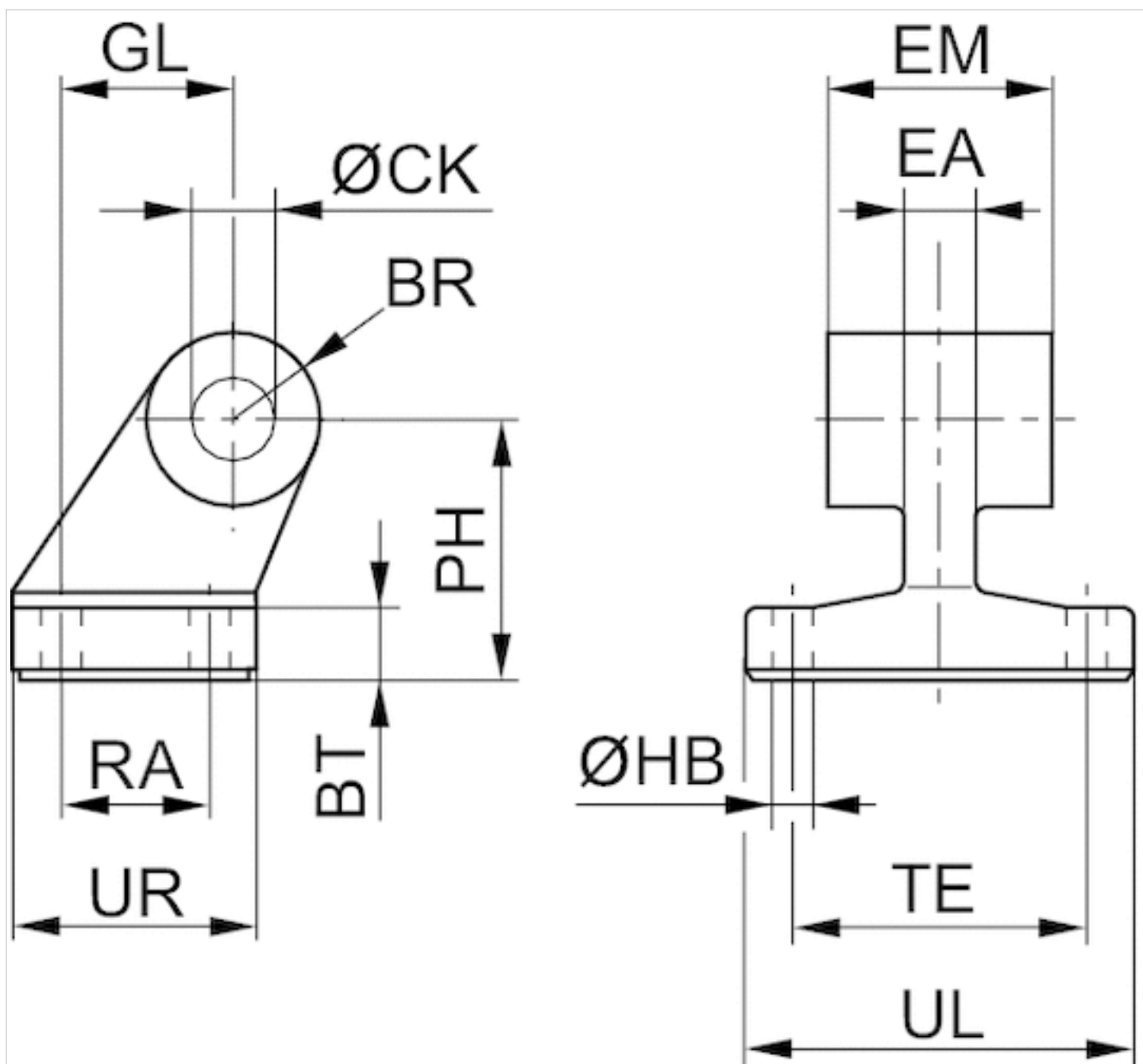
Technical data

Part No.	Piston Ø	Swivel bearing Ø
R412027471	32 mm	10 mm
R412027472	40 mm	12 mm
R412027473	50 mm	12 mm
R412027474	63 mm	16 mm
R412027475	80 mm	16 mm
R412027476	100 mm	20 mm

Technical information

Material	
Material	Die-cast aluminum
Screws	galvanized steel

Dimensions



Dimensions

Part No.	Piston Ø	BR	BT	Ø CK H9	Ø HB H13	EM	GL JS14	EA max.	PH JS15	RA JS14
R412027471	32 mm	10	8	10	6.6	26	21	10	32	18
R412027472	40 mm	11	10	12	6.6	28	24	15	36	22
R412027473	50 mm	13	12	12	9	32	33	16	45	30
R412027474	63 mm	15	14	16	9	40	37	16	50	35
R412027475	80 mm	15	14	16	11	50	47	20	63	40
R412027476	100 mm	19	17	20	11	60	55	20	71	50

TE JS14	UL max.	UR max.
38	51	31
41	54	35
50	65	45
52	67	50
66	86	60
76	96	70

Efficient pneumatic solutions, our program: cylinders and drives, valves and valve systems, air supply management



Visit us: [Emerson.com/Aventics](https://www.emerson.com/Aventics)

Your local contact: [Emerson.com/contactus](https://www.emerson.com/contactus)



Emerson.com



Facebook.com/EmersonAutomationSolutions



LinkedIn.com/company/Emerson-Automation-Solutions



Twitter.com/EMR_Automation

An example configuration is depicted on the title page. The delivered product may thus vary from that in the illustration. Subject to change. This Document, as well as the data, specifications and other information set forth in it, are the exclusive property of AVENTICS GmbH. It may not be reproduced or given to third parties without its consent. Only use the AVENTICS products shown in industrial applications. Read the product documentation completely and carefully before using the product. Observe the applicable regulations and laws of the respective country. When integrating the product into applications, note the system manufacturer's specifications for safe use of the product. The data specified only serve to describe the product. No statements concerning a certain condition or suitability for a certain application can be derived from our information. The information given does not release the user from the obligation of own judgement and verification. It must be remembered that the products are subject to a natural process of wear and aging.

The Emerson logo is a trademark and service mark of Emerson Electric Co. Brand logotype are registered trademarks of one of the Emerson family of companies. All other marks are the property of their respective owners. © 2020 Emerson Electric Co. All rights reserved.
2020-12



CONSIDER IT SOLVED™