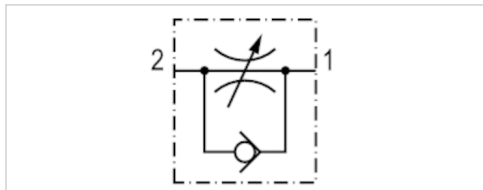


Check-choke valve, Series CC02-AL

- $Q_n 2 \rightarrow 1 = 85-900 \text{ l/min}$
- direction of throttle $2 \rightarrow 1$
- exhaust air throttling
- plug-in with tube nut / External thread



Working pressure min./max.	0,5 ... 10 bar
Ambient temperature min./max.	-10 ... 70 °C
Medium temperature min./max.	-10 ... 70 °C
Medium	Compressed air



Technical data

Part No.	Port 1	Port 2	Throttle bore	Flow
			Ø	$Q_n 2 \rightarrow 1$
0821200117	Ø 3x0,6	M5	2 mm	85 l/min
R412026121	Ø 3x1	M5	2 mm	85 l/min
R412026120	Ø 4x1	M5	2 mm	85 l/min
R412026119	Ø 4x1	G 1/8	3,5 mm	360 l/min
0821200181	Ø 4x1	G 1/4	4,5 mm	540 l/min
R412004775	Ø 6x1	G 1/8	3 mm	360 l/min
R412004776	Ø 6x1	G 1/4	4,5 mm	540 l/min
0821200184	Ø 6x1	G 3/8	6,6 mm	900 l/min
0821200185	Ø 9x1,5	G 3/8	6,6 mm	900 l/min

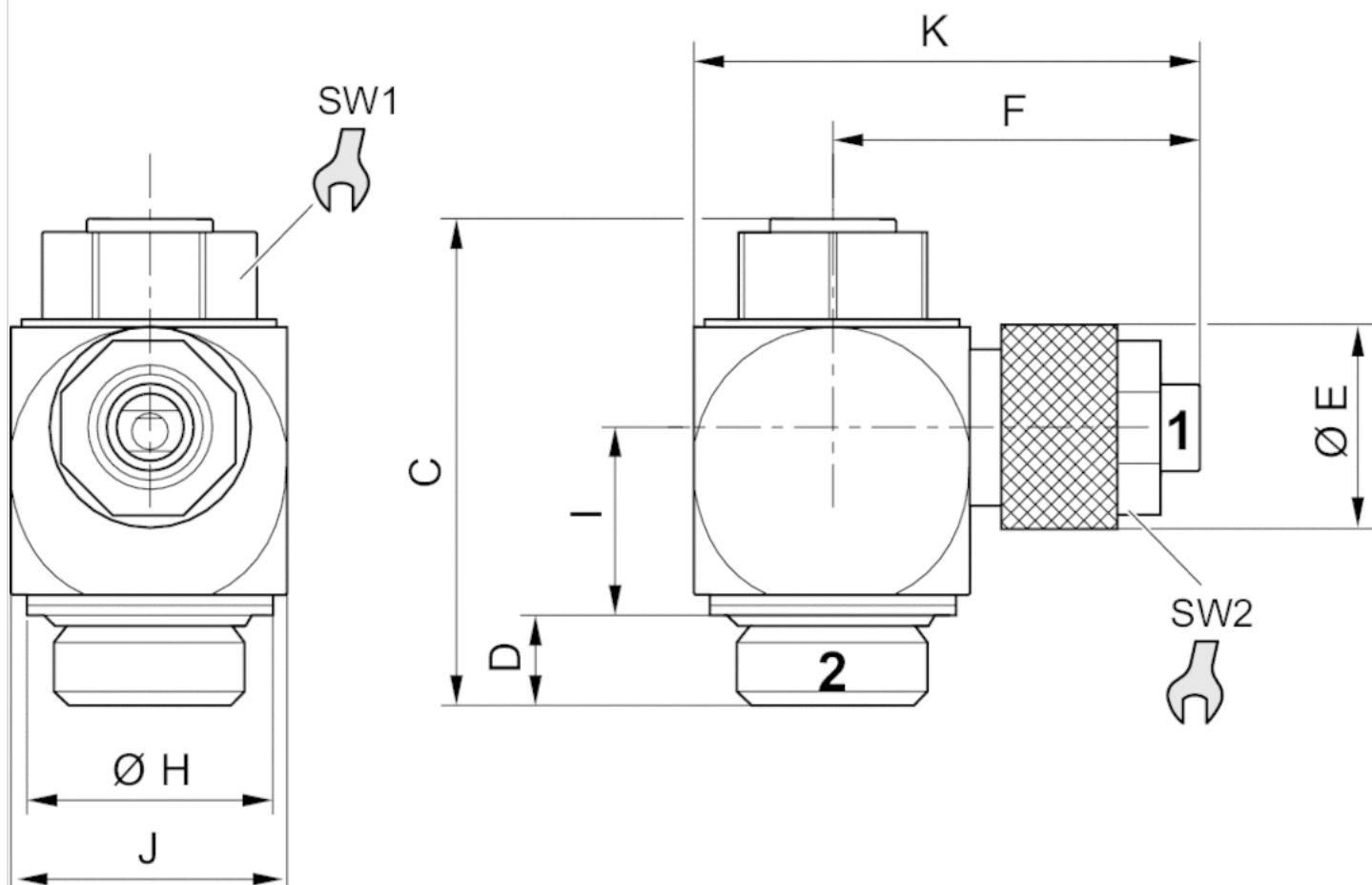
Nominal flow Q_n at 6 bar and $\Delta p = 1 \text{ bar}$, Port 1 = Pipe inside diameter x wall thickness

Technical information

Material	
Housing	Aluminum, anodized
Flow control screw	Brass
Seals	Acrylonitrile butadiene rubber

Dimensions

Dimensions



Dimensions

Part No.	Port 1	Port 2	C	D	$\varnothing E$	F	$\varnothing H$	I	J	K	SW1	SW2
0821200117	$\varnothing 3 \times 0,6$	M5	21.8	4.1	10	16	8.5	7.4	10	21.5	7	8
R412026121	$\varnothing 3 \times 1$	M5	21.8	4.1	10	16	8.5	7.4	10	21.5	7	8
R412026120	$\varnothing 4 \times 1$	M5	21.8	4.1	10	16	8.5	7.4	10	22	7	8
R412026119	$\varnothing 4 \times 1$	G 1/8	28.5	5.5	10	20	14	10.5	15	28	10	8
0821200181	$\varnothing 4 \times 1$	G 1/4	33.6	6.2	8	24.3	17	13	19	31.6	13	8
R412004775	$\varnothing 6 \times 1$	G 1/8	28.5	5.5	14	23.8	14	10.5	15	31.8	10	12
R412004776	$\varnothing 6 \times 1$	G 1/4	33.6	6.2	12	25.5	17	13	19	35.1	13	12
0821200184	$\varnothing 6 \times 1$	G 3/8	41	7.2	14	27.6	22	15.2	24	39.6	16	12

Part No.	Port 1	Port 2	C	D	ØE	F	ØH	I	J	K	SW1	SW2
0821200185	Ø 9x1,5	G 3/8	41	7.2	17	28.2	22	16.3	24	40.2	16	15

Efficient pneumatic solutions, our program: cylinders and drives, valves and valve systems, air supply management



Visit us: [Emerson.com/Aventics](https://www.emerson.com/Aventics)

Your local contact: [Emerson.com/contactus](https://www.emerson.com/contactus)



Emerson.com



Facebook.com/EmersonAutomationSolutions



LinkedIn.com/company/Emerson-Automation-Solutions



Twitter.com/EMR_Automation

An example configuration is depicted on the title page. The delivered product may thus vary from that in the illustration. Subject to change. This Document, as well as the data, specifications and other information set forth in it, are the exclusive property of AVENTICS GmbH. It may not be reproduced or given to third parties without its consent. Only use the AVENTICS products shown in industrial applications. Read the product documentation completely and carefully before using the product. Observe the applicable regulations and laws of the respective country. When integrating the product into applications, note the system manufacturer's specifications for safe use of the product. The data specified only serve to describe the product. No statements concerning a certain condition or suitability for a certain application can be derived from our information. The information given does not release the user from the obligation of own judgement and verification. It must be remembered that the products are subject to a natural process of wear and aging.

The Emerson logo is a trademark and service mark of Emerson Electric Co. Brand logotype are registered trademarks of one of the Emerson family of companies. All other marks are the property of their respective owners. © 2021 Emerson Electric Co. All rights reserved.
2021-06



CONSIDER IT SOLVED™