

# Series AES

- digital inputs/outputs, Socket (female), M8x1



Ambient temperature min./max.	-10 ... 60 °C
Operational voltage electronics	24 V DC
Electronics voltage tolerance	-25% / +25%
Max. current per channel	0,5 A
Total current for actuators	4 A
Protection class	IP65
Total current of sensors max.	1 A
Filter time	3 ms
Logic/actuator voltage	Galvanically isolated
Diagnosis	Short circuit Undervoltage
Generic emission standard in accordance with norm	EN 61000-6-4
Generic immunity standard in accordance with norm	EN 61000-6-2
Weight	0,11 kg

## Technical data

Part No.	Type	Port	power supply	Number of inputs	Number of outputs
		1			
R412018269	8DIDO8M8	Socket (female), 3-pin	Internal	8	8
R412018233	8DI8M8	Socket (female), 3-pin	Internal	8	-
R412018248	8DO8M8	Socket (female), 3-pin	Internal	-	8
R412018234	16DI8M8	Socket (female), 4-pin	Internal	16	-

Part No.	I/O module version	Fig.	
R412018269	Digital inputs Digital outputs Combination module	Fig. 1	1)
R412018233	Digital inputs	Fig. 1	-
R412018248	Digital outputs	Fig. 1	-
R412018234	Digital inputs	Fig. 2	-

Delivery contents: incl. 2 spring clamp elements and seal

1) Function specification for fieldbus configuration.

## Technical information

You will find assignment schemes for the product in the operating instructions, or contact the nearest AVENTICS sales office.

The total current of all outputs (including valves) must not exceed 4 A in the overall system.

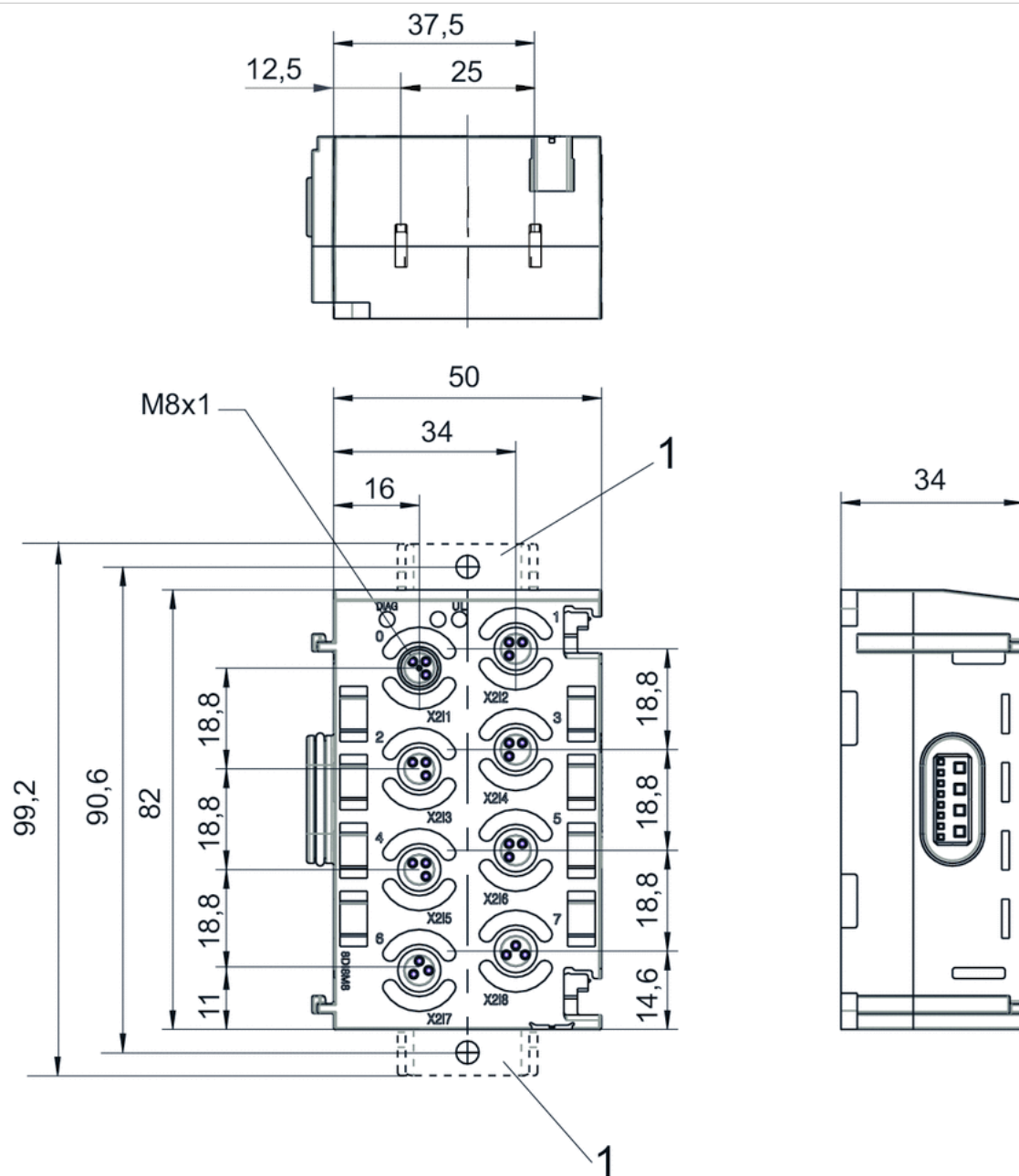
Voltage and short-circuit monitoring per LED.

## Technical information

Material	
Housing	Polyamide fiber-glass reinforced

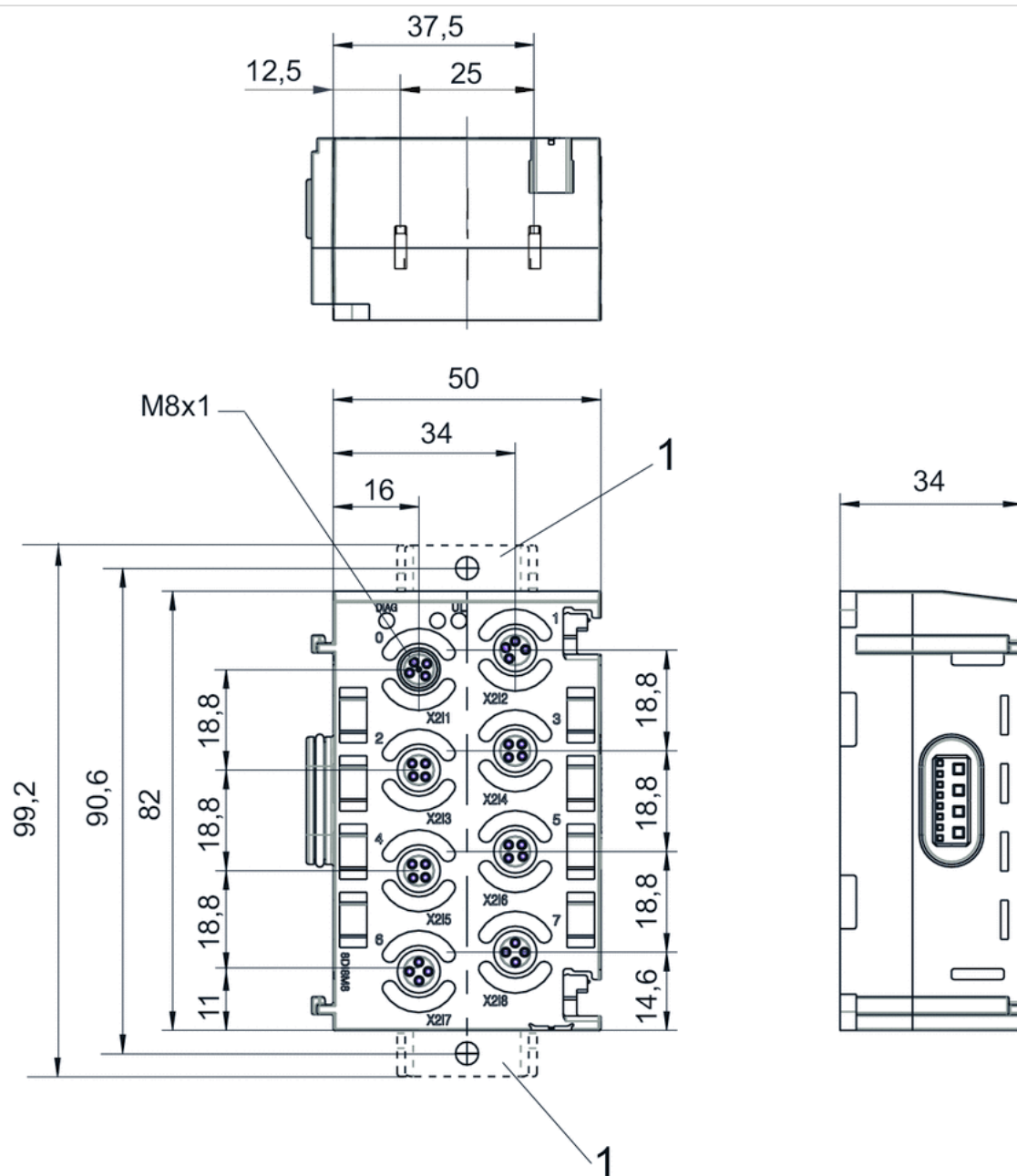
## Dimensions

Dimensions, Fig. 1



1) Retaining bracket (optional)  
Pin assignment M8x1 (3-pin)

## Dimensions, Fig. 2

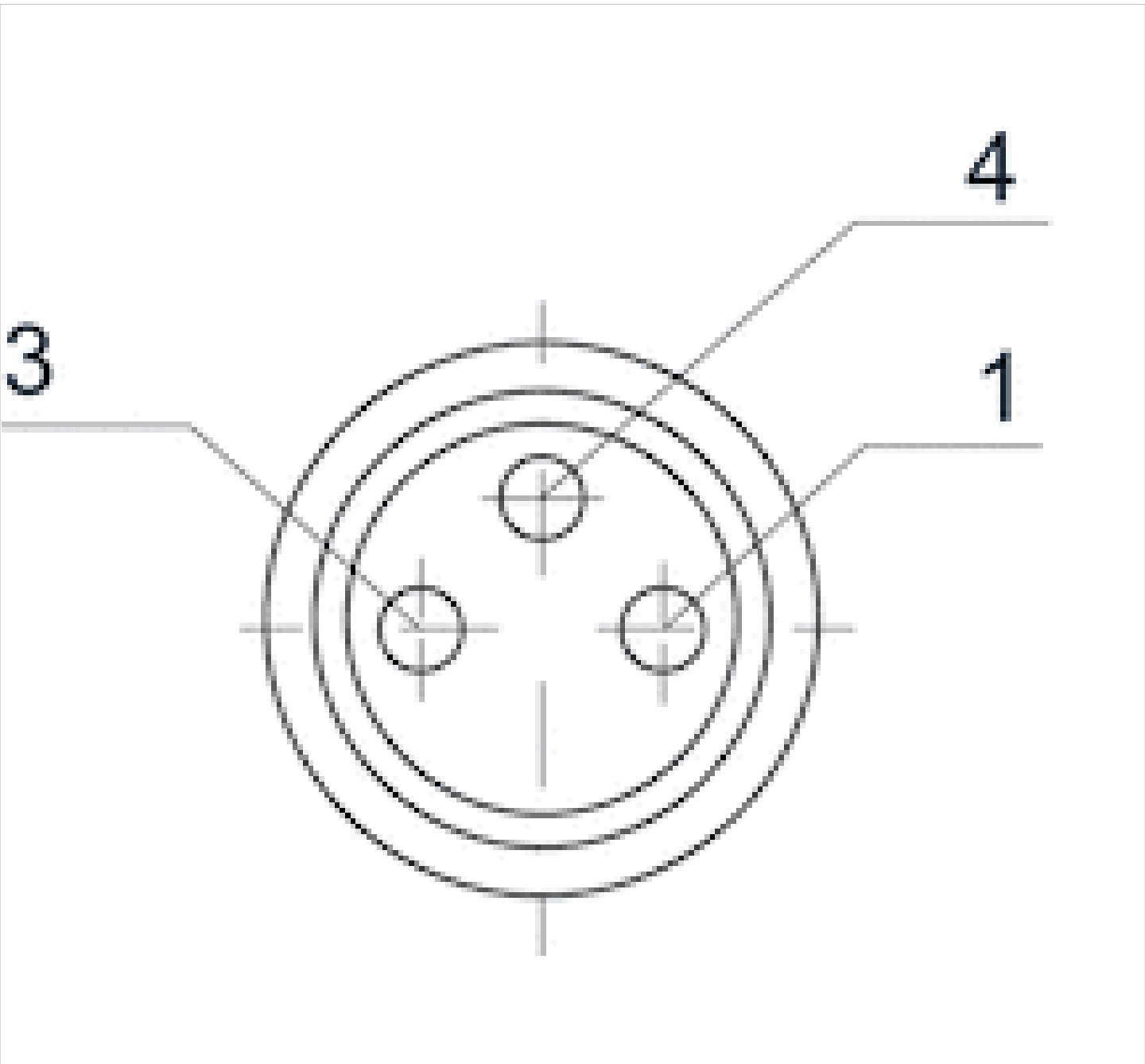


1) Retaining bracket (optional)

Pin assignment M8x1 (4-pin)

Pin assignments

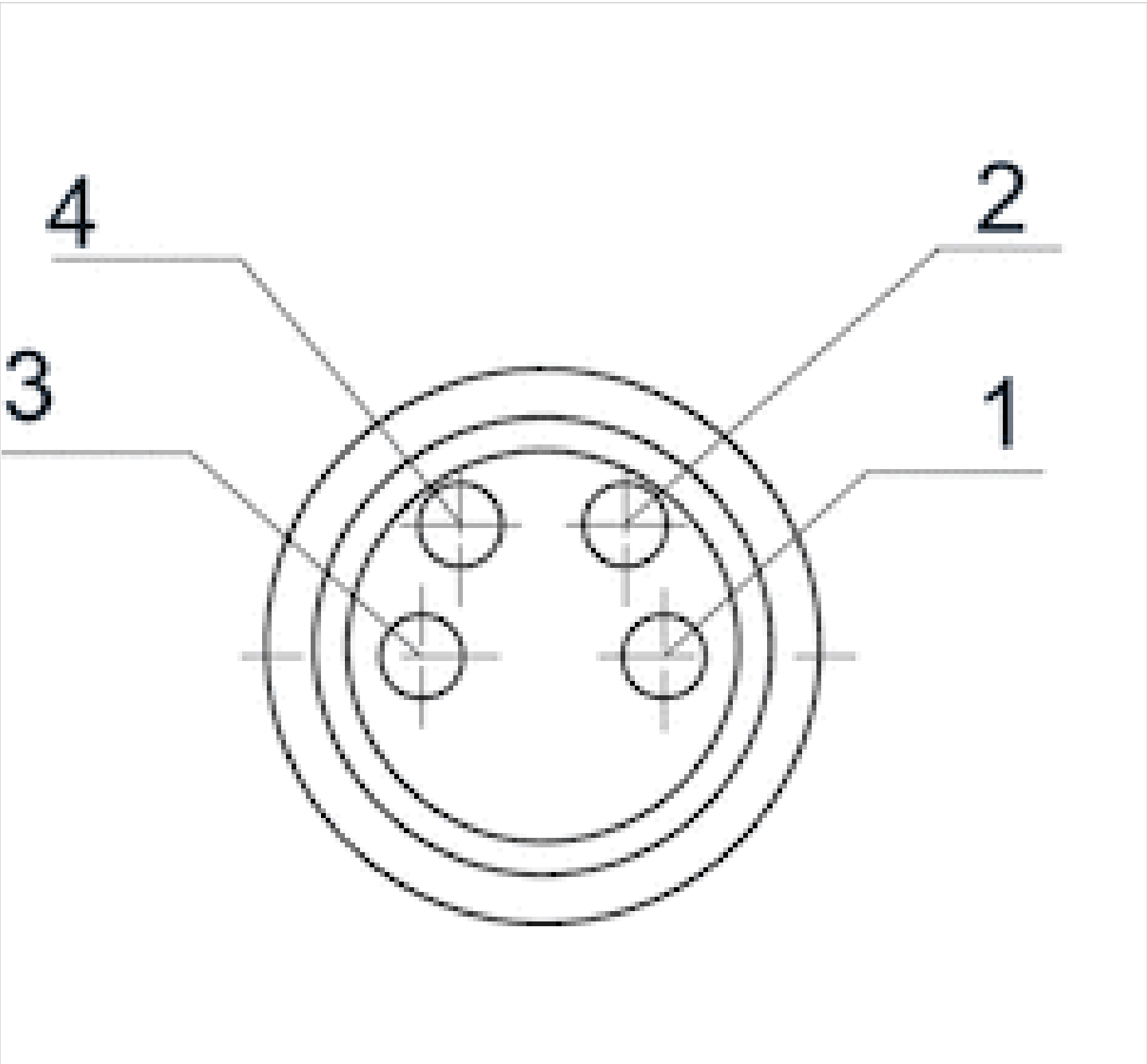
Pin assignments, PNP, 3-pin



Pin	1	3	4
Input module	24 V DC	0 V DC	Input signal
Output module	-	0 V DC	Output signal

Pin assignments

Pin assignments, PNP, 4-pin



Pin	1	2
Input module	24 V DC sensor voltage	Input signal (most significant bit)
3	4	
0 V DC sensor voltage	Input signal (lower order bit)	

# Efficient pneumatic solutions, our program: cylinders and drives, valves and valve systems, air supply management



Visit us: [Emerson.com/Aventics](https://emerson.com/aventics)

Your local contact: [Emerson.com/contactus](https://emerson.com/contactus)



Emerson.com



Facebook.com/EmersonAutomationSolutions



LinkedIn.com/company/Emerson-Automation-Solutions



Twitter.com/EMR\_Automation

An example configuration is depicted on the title page. The delivered product may thus vary from that in the illustration. Subject to change. This Document, as well as the data, specifications and other information set forth in it, are the exclusive property of AVENTICS GmbH. It may not be reproduced or given to third parties without its consent. Only use the AVENTICS products shown in industrial applications. Read the product documentation completely and carefully before using the product. Observe the applicable regulations and laws of the respective country. When integrating the product into applications, note the system manufacturer's specifications for safe use of the product. The data specified only serve to describe the product. No statements concerning a certain condition or suitability for a certain application can be derived from our information. The information given does not release the user from the obligation of own judgement and verification. It must be remembered that the products are subject to a natural process of wear and aging.

The Emerson logo is a trademark and service mark of Emerson Electric Co. Brand logotype are registered trademarks of one of the Emerson family of companies. All other marks are the property of their respective owners. © 2020 Emerson Electric Co. All rights reserved.  
2020-12



## CONSIDER IT SOLVED™