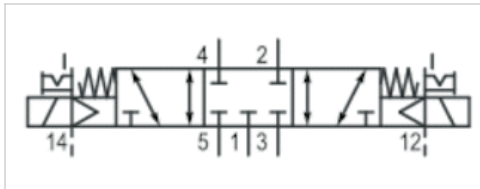





5/3-directional valve, Series CL03-EV

- 5/3
- $Q_n = 700 \text{ l/min}$
- Pilot valve width : 16 mm
- closed center
- Plate connection
- Compressed air connection output : $\varnothing 8 \text{ G } 1/8$
- Manual override : with detent
- Pilot : External
- suitable for use in food processing



Type	Spool valve, positive overlapping
Activation	Electrically
Pilot	External
Sealing principle	Soft sealing
Blocking principle	Single base plate principle
Certificates	UR (Underwriters Laboratories)
Working pressure min./max.	-0,9 ... 10 bar
Control pressure min./max.	3 ... 10 bar
Ambient temperature min./max.	0 ... 50 °C
Medium temperature min./max.	0 ... 50 °C
Medium	Compressed air
Max. particle size	5 μm
Oil content of compressed air	0 ... 5 mg/m^3
Nominal flow Q_n	700 l/min
Pilot control exhaust	With collective pilot air exhaust
Protection class with connection	IP65 IP67 IP69K
Protective circuit	Z-diode
Reverse polarity protection	Protected against polarity reversal
LED status display	Yellow
Duty cycle	100 %
Typ. switch-on time	14 ms
Typ. switch-off time	15 ms
mounting screws	M5
Mounting screw tightening torque	2 Nm
Tightening torque tolerance	$\pm 0,2 \text{ mT}$
Weight	0,165 kg

Technical data

Part No.	MO		Compressed air connection
			Input
R412017953		closed center	Ø 8
R412017954		closed center	Ø 8
R412017955		closed center	G 1/8

Part No.	Compressed air connection	Compressed air connection
	Output	Exhaust
R412017953	Ø 8	Ø 8
R412017954	Ø 8	Ø 8
R412017955	G 1/8	G 1/8

Part No.	Compressed air connection	Compressed air connection
	Pilot Input	Pilot Exhaust
R412017953	Ø 4	Ø 4
R412017954	Ø 4	Ø 4
R412017955	M5	M5

Part No.	Operational voltage	Voltage tolerance	Power consumption
	DC	DC	DC
R412017953	24 V	-15% / +20%	0,35 W
R412017954	24 V	-15% / +20%	0,35 W
R412017955	24 V	-15% / +20%	0,35 W

Part No.	Flow conductance	Flow conductance	push-in fitting
	b	C-value	
R412017953	0,39	2,5 l/(s*bar)	Brass nickel-plated
R412017954	0,39	2,5 l/(s*bar)	Stainless steel
R412017955	0,39	2,5 l/(s*bar)	-

Nominal flow Q_n at 6 bar and Δp = 1 bar, MO = Manual override

Technical information

The min. control pressure must be adhered to, since otherwise faulty switching and valve failure may result!

The pressure dew point must be at least 15 °C under ambient and medium temperature and may not exceed 3 °C .

The oil content of compressed air must remain constant during the life cycle.

Use only the approved oils from AVENTICS. Further information can be found in the "Technical information" document (available in the MediaCentre).

For series QR2 fittings, see "Pneumatic connection technologies".

The inner valve can be replaced by all series CL03 valves described under "Valve systems".

The pilot valve is UL (Underwriters Laboratories) certified.

Technical information

Material	
Housing	Polyamide fiber-glass reinforced
Seals	Acrylonitrile butadiene rubber

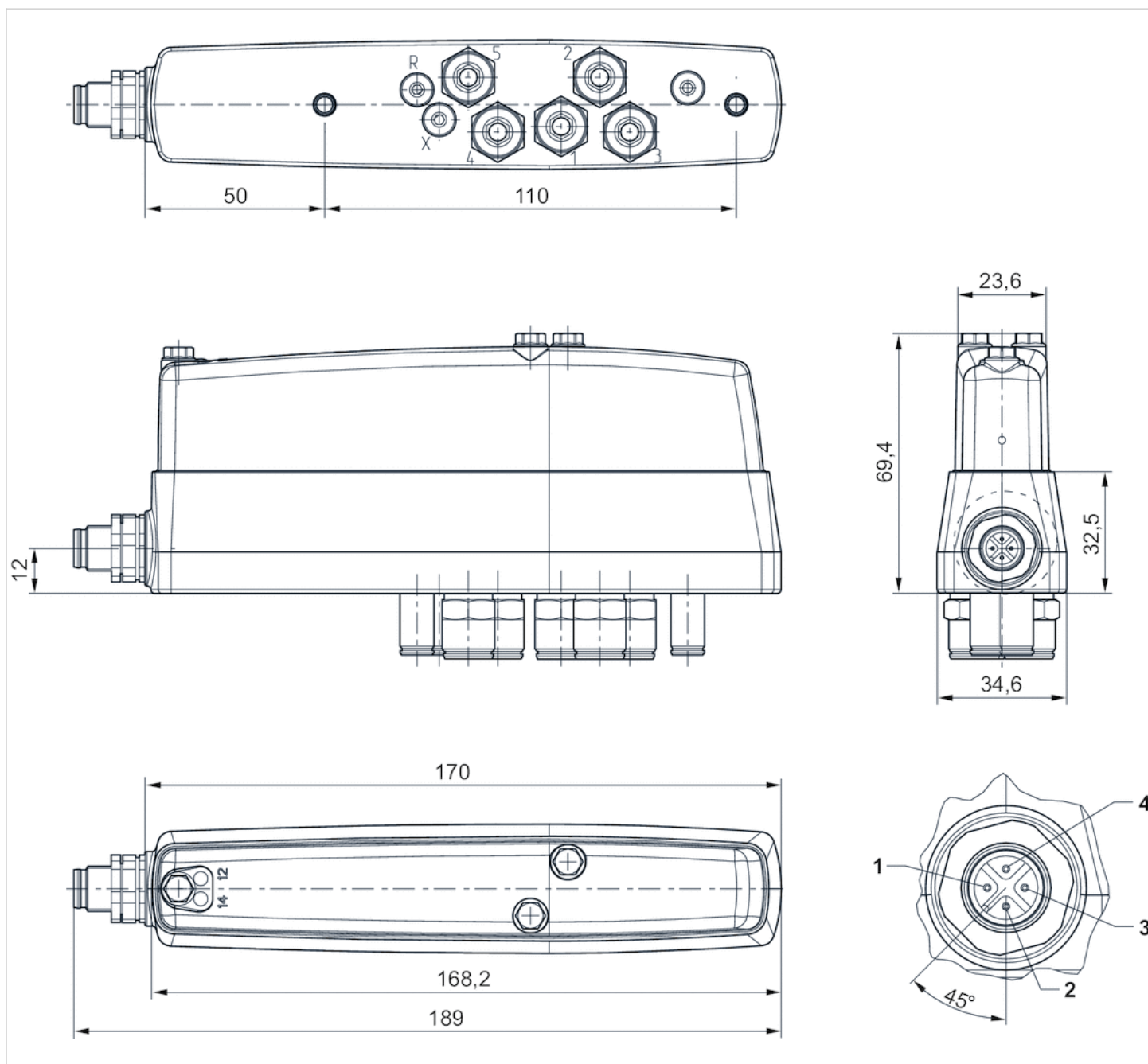
Material

Threaded bushing

Brass, nickel-plated Stainless steel

Dimensions

Dimensions



Electrical connection:

- 1) Not connected
- 2) Solenoid 12
- 3) 0 V
- 4) Solenoid 14

Efficient pneumatic solutions, our program: cylinders and drives, valves and valve systems, air supply management



Visit us: [Emerson.com/Aventics](https://www.emerson.com/Aventics)

Your local contact: [Emerson.com/contactus](https://www.emerson.com/contactus)



Emerson.com



Facebook.com/EmersonAutomationSolutions



LinkedIn.com/company/Emerson-Automation-Solutions



Twitter.com/EMR_Automation

An example configuration is depicted on the title page. The delivered product may thus vary from that in the illustration. Subject to change. This Document, as well as the data, specifications and other information set forth in it, are the exclusive property of AVENTICS GmbH. It may not be reproduced or given to third parties without its consent. Only use the AVENTICS products shown in industrial applications. Read the product documentation completely and carefully before using the product. Observe the applicable regulations and laws of the respective country. When integrating the product into applications, note the system manufacturer's specifications for safe use of the product. The data specified only serve to describe the product. No statements concerning a certain condition or suitability for a certain application can be derived from our information. The information given does not release the user from the obligation of own judgement and verification. It must be remembered that the products are subject to a natural process of wear and aging.

The Emerson logo is a trademark and service mark of Emerson Electric Co. Brand logotype are registered trademarks of one of the Emerson family of companies. All other marks are the property of their respective owners. © 2020 Emerson Electric Co. All rights reserved.
2020-12



CONSIDER IT SOLVED™