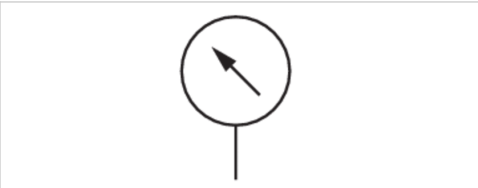


Pressure gauge, Series PG1-INT

- flange version
- Background color White
- Scale color Black
- Viewing window Polycarbonate
- Units bar



Type	Diaphragm pressure gauge
Ambient temperature min./max.	0 ... 60 °C
Medium	Compressed air
Main scale unit (outside)	bar
Main scale color (outside)	Black
Background color	White
Pointer color	Black
Weight	0,024 kg



Technical data

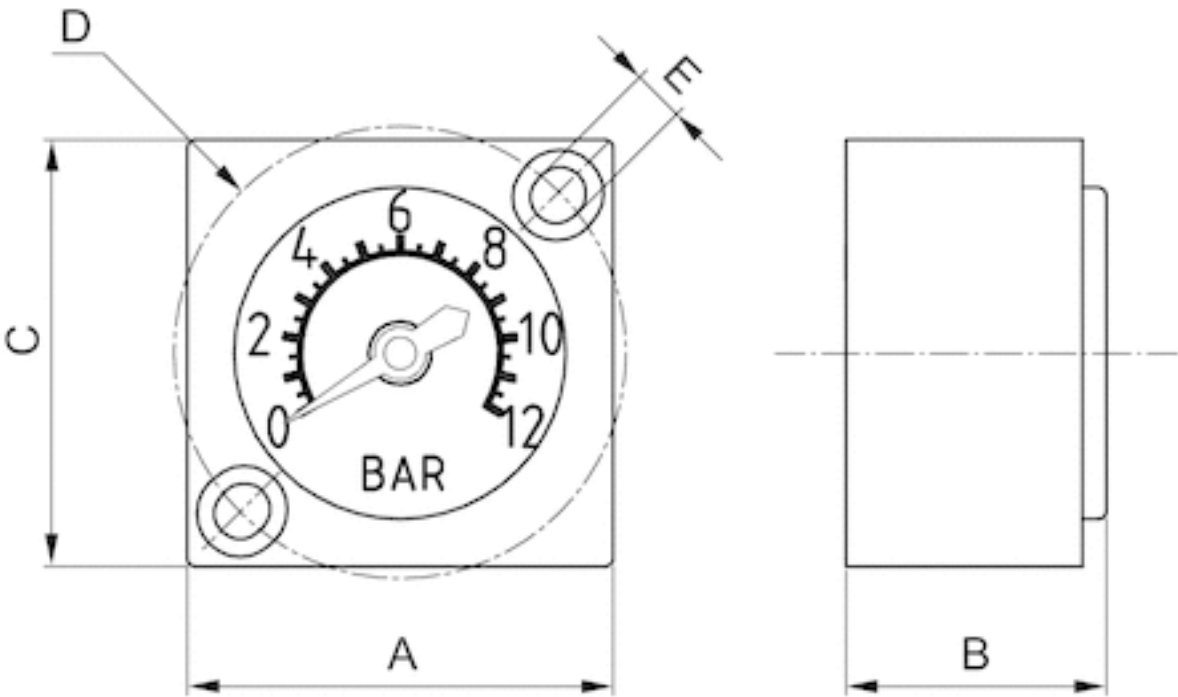
Part No.	Range of application	Display range	Operating pressure	Scale value
R412014760	0 bar ... 6	0 bar ... 6	0 ... 6 bar	0,25
R412014761	0 bar ... 12 bar	0 bar ... 12 bar	0 ... 12 bar	0,25

Technical information

Material	
Housing	Polyamide
Viewing window	Polycarbonate
Seal	Nitrile butadiene rubber

Dimensions

Dimensions



Dimensions in mm

Part No.	A	B	C	D	E
R412014760	27	16.5	27	28.3	3.3
R412014761	27	16.5	27	28.3	3.3

Efficient pneumatic solutions, our program: cylinders and drives, valves and valve systems, air supply management



Visit us: [Emerson.com/Aventics](https://www.emerson.com/Aventics)

Your local contact: [Emerson.com/contactus](https://www.emerson.com/contactus)



Emerson.com



Facebook.com/EmersonAutomationSolutions



LinkedIn.com/company/Emerson-Automation-Solutions



Twitter.com/EMR_Automation

An example configuration is depicted on the title page. The delivered product may thus vary from that in the illustration. Subject to change. This Document, as well as the data, specifications and other information set forth in it, are the exclusive property of AVENTICS GmbH. It may not be reproduced or given to third parties without its consent. Only use the AVENTICS products shown in industrial applications. Read the product documentation completely and carefully before using the product. Observe the applicable regulations and laws of the respective country. When integrating the product into applications, note the system manufacturer's specifications for safe use of the product. The data specified only serve to describe the product. No statements concerning a certain condition or suitability for a certain application can be derived from our information. The information given does not release the user from the obligation of own judgement and verification. It must be remembered that the products are subject to a natural process of wear and aging.

The Emerson logo is a trademark and service mark of Emerson Electric Co. Brand logotype are registered trademarks of one of the Emerson family of companies. All other marks are the property of their respective owners. © 2020 Emerson Electric Co. All rights reserved.
2020-12



CONSIDER IT SOLVED™