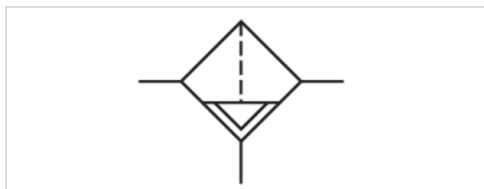


Standard filter, Series AS1-FLS

- G 1/4
- Air supply right
- filter porosity 5 µm



Type	Standard filter, Can be assembled into blocks
Parts	Filter
Mounting orientation	vertical
Working pressure min./max.	1,5 ... 12 bar
Ambient temperature min./max.	-10 ... 50 °C
Medium temperature min./max.	-10 ... 50 °C
Medium	Compressed air Neutral gases
Filter reservoir volume	16 cm ³
Filter element	exchangeable
filter porosity	5 µm
Condensate drain	See table below
Weight	See table below

Technical data

Part No.	Port	Flow Qn	Condensate drain
R412014678	G 1/4	1000 l/min	semi-automatic, open without pressure
R412014679	G 1/4	1000 l/min	fully automatic, open without pressure
R412014680	G 1/4	1000 l/min	fully automatic, closed without pressure
R412014681	G 1/4	1000 l/min	semi-automatic, open without pressure
R412014682	G 1/4	1000 l/min	semi-automatic, open without pressure
R412014683	G 1/4	1000 l/min	fully automatic, open without pressure
R412014684	G 1/4	1000 l/min	fully automatic, closed without pressure

Part No.	Version	Weight
R412014678	reservoir, polycarbonate, without protective guard	0,166 kg
R412014679	reservoir, polycarbonate, without protective guard	0,184 kg
R412014680	reservoir, polycarbonate, without protective guard	0,184 kg
R412014681	reservoir, polycarbonate, with metal protective guard	0,193 kg
R412014682	Metal reservoir without window	0,243 kg
R412014683	Metal reservoir without window	0,255 kg
R412014684	Metal reservoir without window	0,255 kg

Nominal flow Qn with secondary pressure p2 = 6 bar at Δp = 1 bar

Technical information

The pressure dew point must be at least 15 °C under ambient and medium temperature and may not exceed 3 °C .

Note: Polycarbonate reservoirs are susceptible to solvents, supplementary information can be found at "Customer information".

Also suitable for separation of fluid oil or water due to the design.

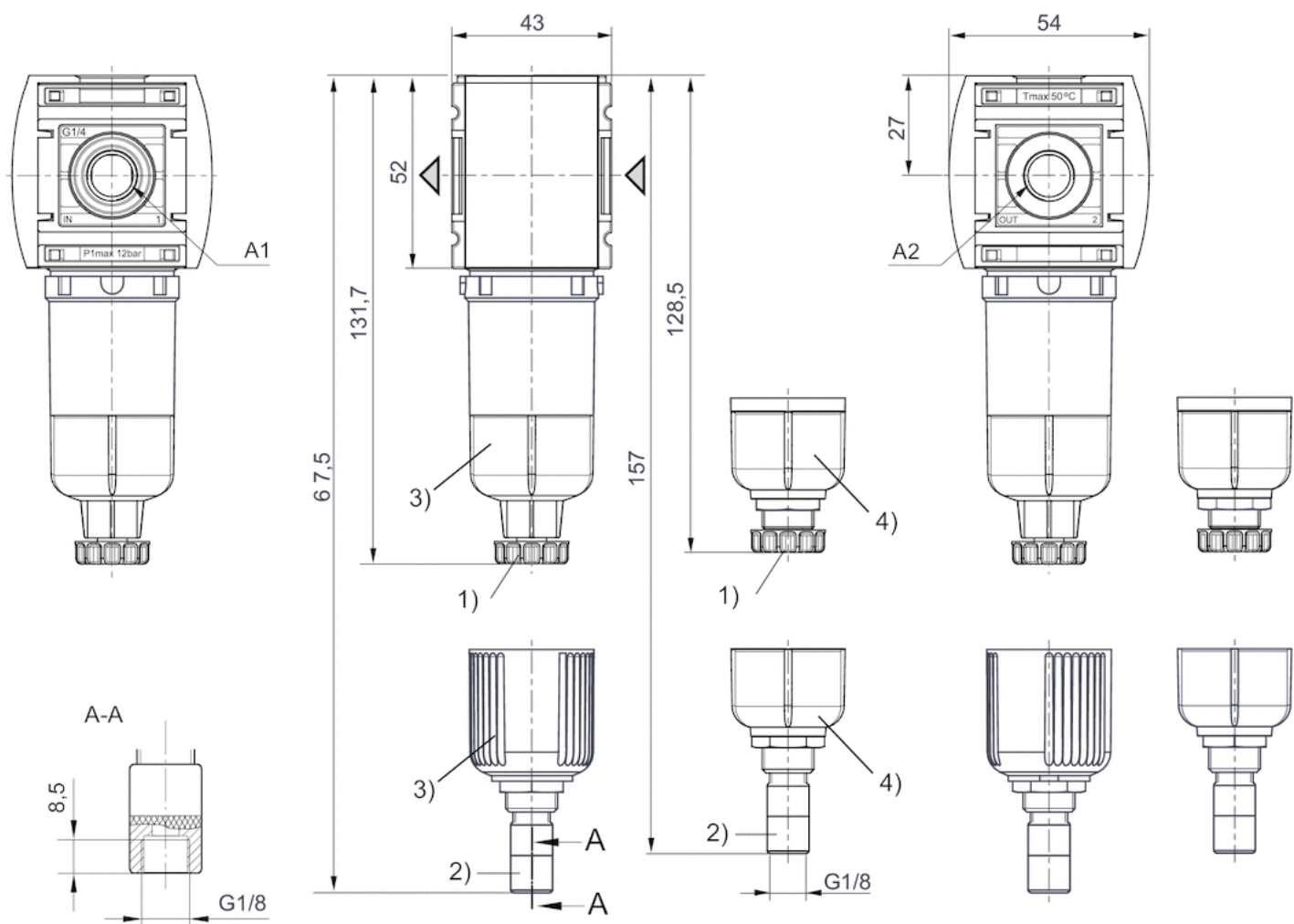
Max. achievable compressed air class acc. to ISO 8573-1:2010 6 : 7 : -

Technical information

Material	
Housing	Polyamide
Front plate	Acrylonitrile butadiene styrene
Seals	Acrylonitrile butadiene rubber
Reservoir	Polycarbonate metal
Protective guard	metal
Filter insert	Cellpor

Dimensions

Dimensions in mm



A1 = input

1) A2 = output

2) Semi-automatic condensate drain

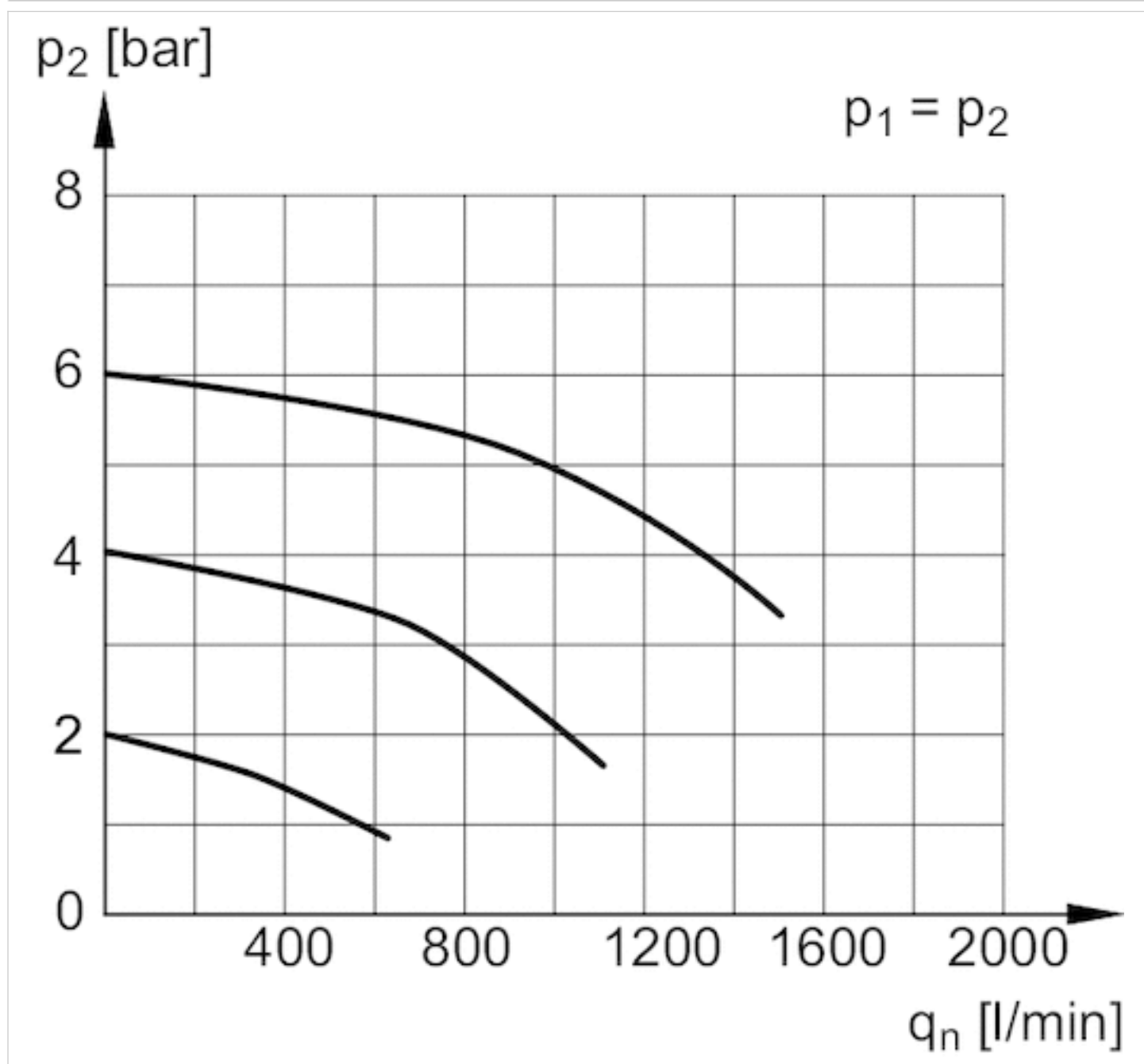
3) Fully automatic condensate drain

4) Reservoir: polycarbonate

Reservoir: metal

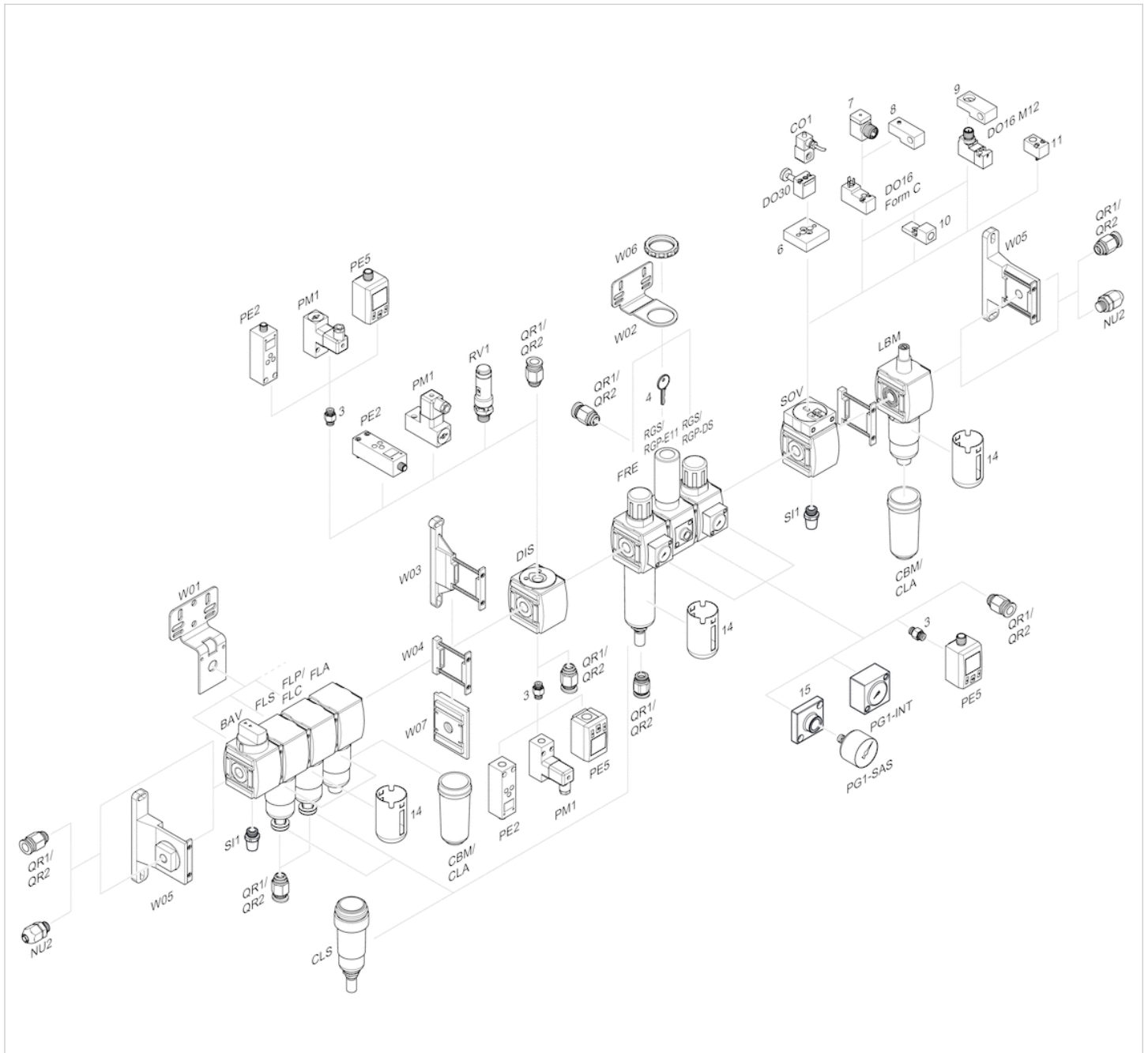
Diagrams

Flow rate characteristic



p_1 = working pressure
 p_2 = secondary pressure
 q_n = nominal flow

Accessories overview



- 3 = Double nipple
- 4 = Key for E11 locking
- 6 = Transition plate DO30
- 7 = Adapter, Series CON-VP
- 8 = Mounting aid DO16, form C
- 9 = Mounting aid DO16, M12
- 10 = Adapter for external pilot air
- 11 = Adapter pneumatic operation
- 14 = Protective guard
- 15 = Transition plate for assembling a pressure gauge with connection thread G 1/8

Efficient pneumatic solutions, our program: cylinders and drives, valves and valve systems, air supply management



Visit us: [Emerson.com/Aventics](https://www.emerson.com/Aventics)

Your local contact: [Emerson.com/contactus](https://www.emerson.com/contactus)



Emerson.com



Facebook.com/EmersonAutomationSolutions



LinkedIn.com/company/Emerson-Automation-Solutions



Twitter.com/EMR_Automation

An example configuration is depicted on the title page. The delivered product may thus vary from that in the illustration. Subject to change. This Document, as well as the data, specifications and other information set forth in it, are the exclusive property of AVENTICS GmbH. It may not be reproduced or given to third parties without its consent. Only use the AVENTICS products shown in industrial applications. Read the product documentation completely and carefully before using the product. Observe the applicable regulations and laws of the respective country. When integrating the product into applications, note the system manufacturer's specifications for safe use of the product. The data specified only serve to describe the product. No statements concerning a certain condition or suitability for a certain application can be derived from our information. The information given does not release the user from the obligation of own judgement and verification. It must be remembered that the products are subject to a natural process of wear and aging.

The Emerson logo is a trademark and service mark of Emerson Electric Co. Brand logotype are registered trademarks of one of the Emerson family of companies. All other marks are the property of their respective owners. © 2020 Emerson Electric Co. All rights reserved.
2020-12



CONSIDER IT SOLVED™