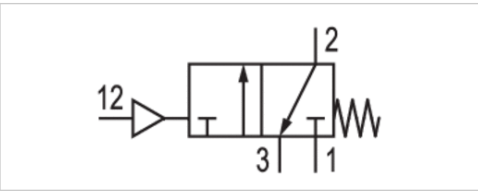


# 3/2-directional valve, pneumatically operated, Series AS1-SOV

- Compressed air connection G 1/4
- Air supply left
- Pipe connection



|                               |  |
|-------------------------------|--|
| Type                          | Poppet valve, Can be assembled into blocks |
| Sealing principle             | Soft sealing                               |
| Working pressure min./max.    | 0 ... 12 bar                               |
| Control pressure min./max.    | 2,5 ... 12 bar                             |
| Ambient temperature min./max. | -10 ... 50 °C                              |
| Medium temperature min./max.  | -10 ... 50 °C                              |
| Medium                        | Compressed air Neutral gases               |
| Weight                        | 0,09 kg                                    |

## Technical data

| Part No.   | Port  | Pilot connection | Exhaust | Flow       | Flow       | Flow      |
|------------|-------|------------------|---------|------------|------------|-----------|
|            |       |                  |         | Qn         | Qn 1→2     | Qn 2→3    |
| R412014665 | G 1/4 | G 1/8            | G 1/4   | 2000 l/min | 2000 l/min | 380 l/min |

Nominal flow Qn with secondary pressure p2 = 6 bar at Δp = 1 bar

## Technical information

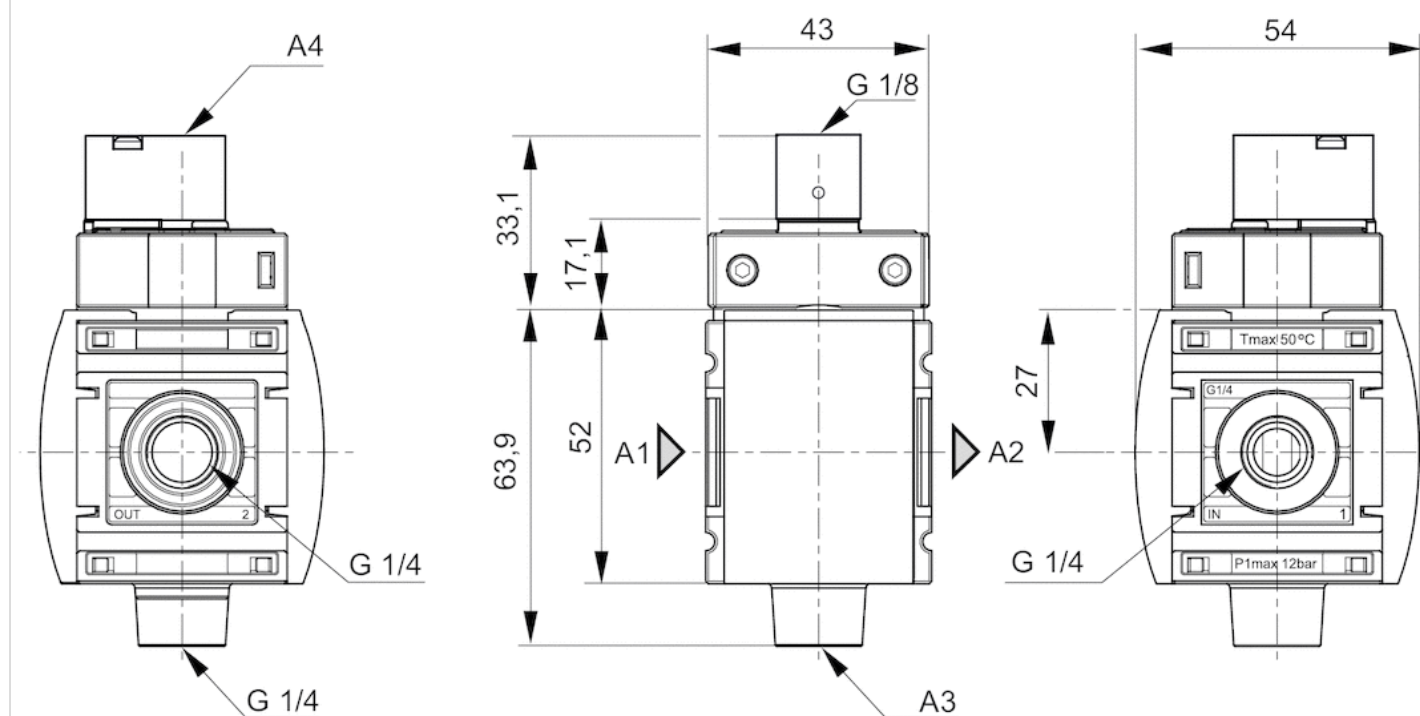
The pressure dew point must be at least 15 °C under ambient and medium temperature and may not exceed 3 °C .

## Technical information

| Material    |                                 |
|-------------|---------------------------------|
| Housing     | Polyamide                       |
| Front plate | Acrylonitrile butadiene styrene |
| Seals       | Acrylonitrile butadiene rubber  |

## Dimensions

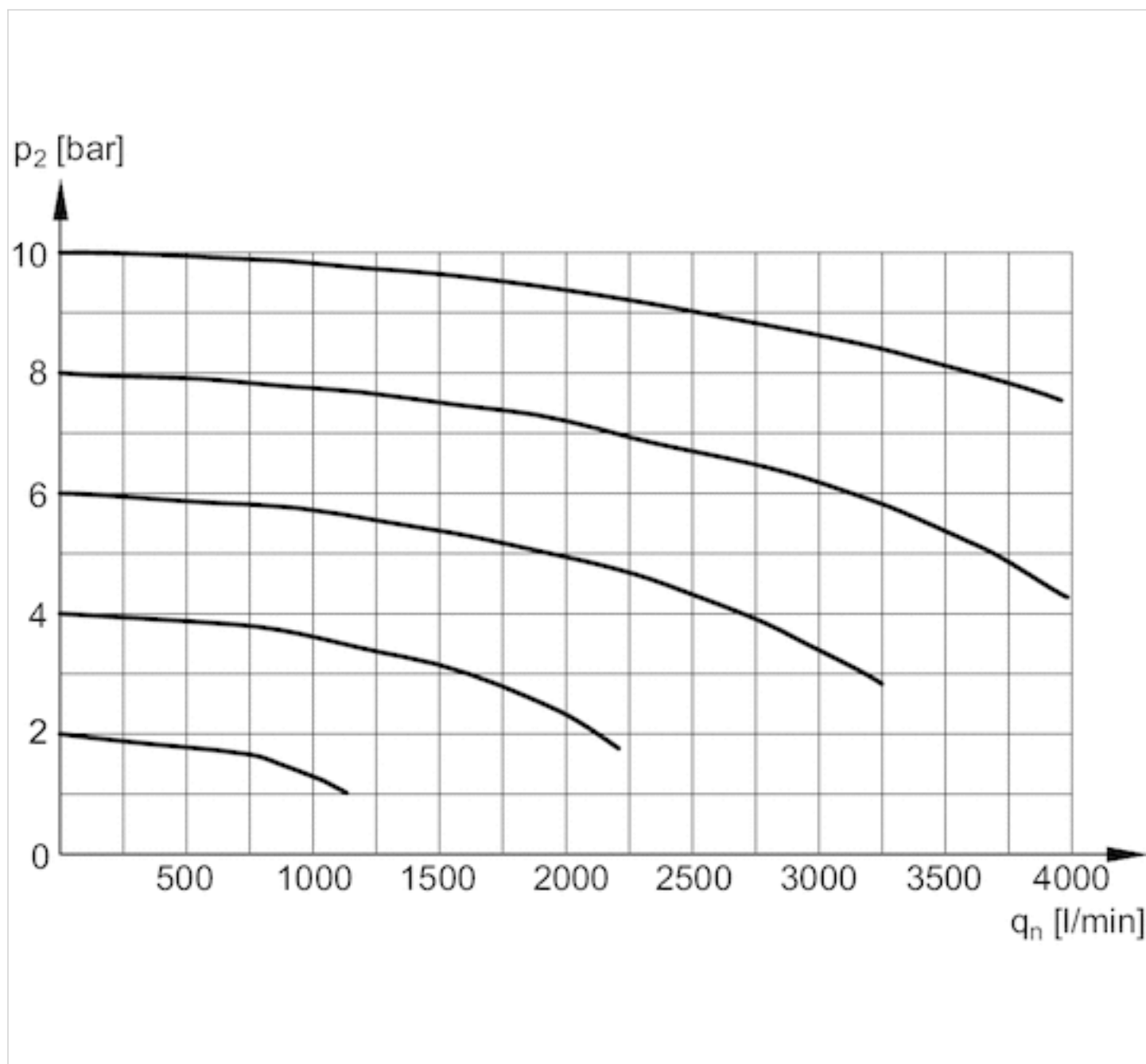
### Dimensions in mm



- A1 = input
- A2 = output
- A3 = ventilation port
- A4 = control pressure connection

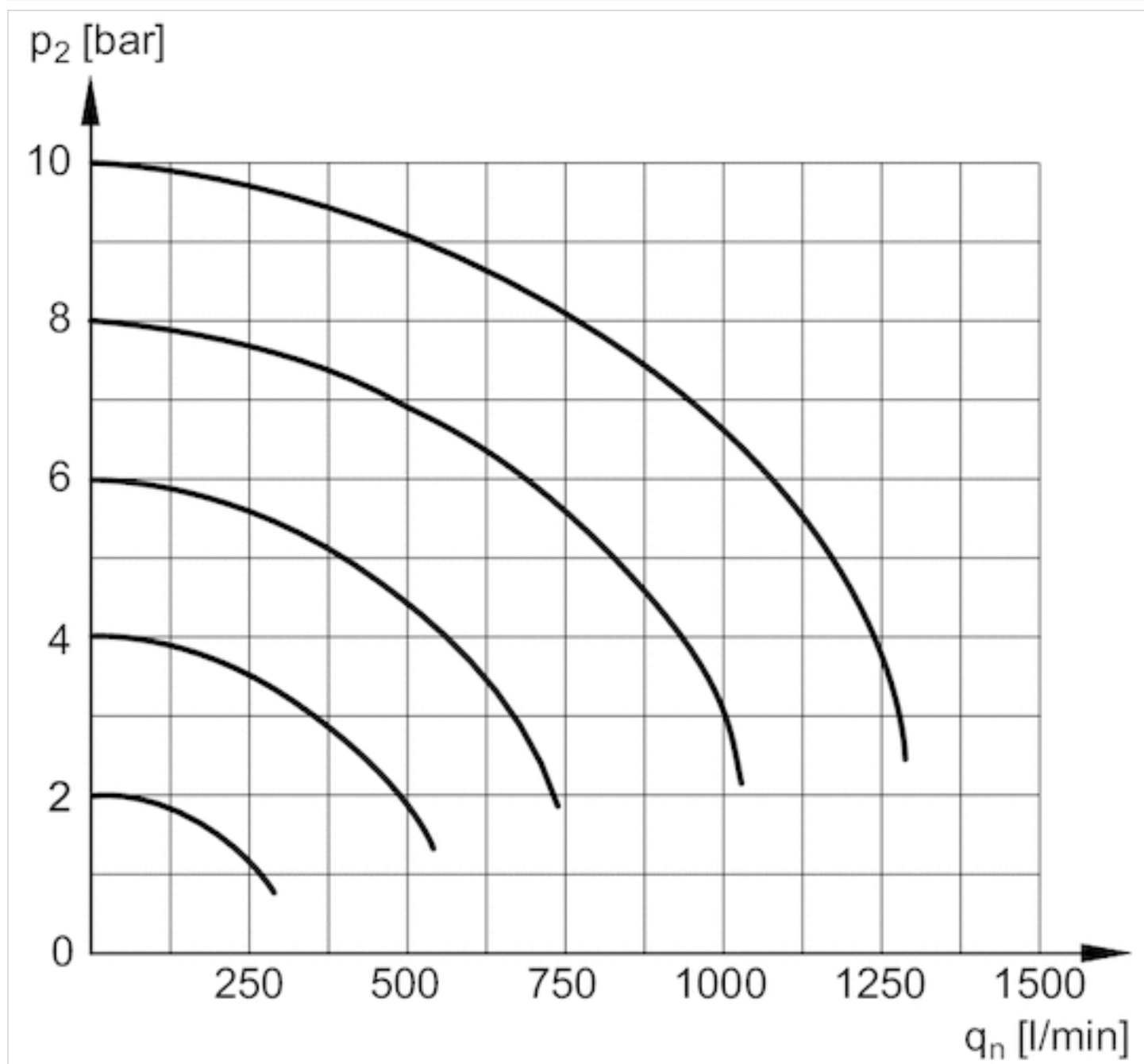
## Diagrams

### Flow rate characteristic



$p_2$  = secondary pressure  
 $q_n$  = nominal flow

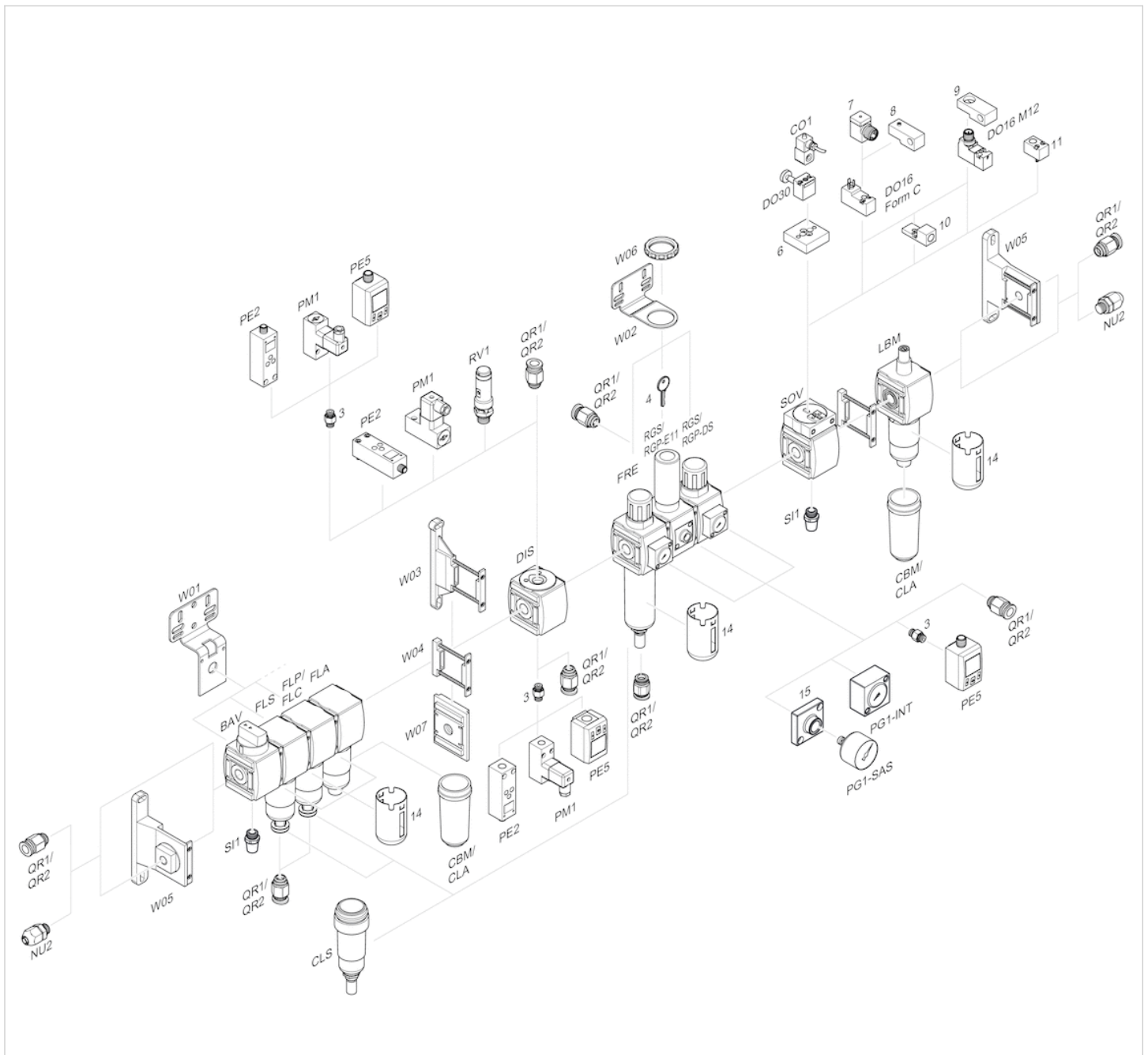
## Rear exhaust



p2 = secondary pressure

qn = nominal flow

## Accessories overview



- 3 = Double nipple
- 4 = Key for E11 locking
- 6 = Transition plate DO30
- 7 = Adapter, Series CON-VP
- 8 = Mounting aid DO16, form C
- 9 = Mounting aid DO16, M12
- 10 = Adapter for external pilot air
- 11 = Adapter pneumatic operation
- 14 = Protective guard
- 15 = Transition plate for assembling a pressure gauge with connection thread G 1/8

# Efficient pneumatic solutions, our program: cylinders and drives, valves and valve systems, air supply management



Visit us: [Emerson.com/Aventics](https://emerson.com/aventics)

Your local contact: [Emerson.com/contactus](https://emerson.com/contactus)



Emerson.com



Facebook.com/EmersonAutomationSolutions



LinkedIn.com/company/Emerson-Automation-Solutions



Twitter.com/EMR\_Automation

An example configuration is depicted on the title page. The delivered product may thus vary from that in the illustration. Subject to change. This Document, as well as the data, specifications and other information set forth in it, are the exclusive property of AVENTICS GmbH. It may not be reproduced or given to third parties without its consent. Only use the AVENTICS products shown in industrial applications. Read the product documentation completely and carefully before using the product. Observe the applicable regulations and laws of the respective country. When integrating the product into applications, note the system manufacturer's specifications for safe use of the product. The data specified only serve to describe the product. No statements concerning a certain condition or suitability for a certain application can be derived from our information. The information given does not release the user from the obligation of own judgement and verification. It must be remembered that the products are subject to a natural process of wear and aging.

The Emerson logo is a trademark and service mark of Emerson Electric Co. Brand logotype are registered trademarks of one of the Emerson family of companies. All other marks are the property of their respective owners. © 2020 Emerson Electric Co. All rights reserved.  
2020-12



## CONSIDER IT SOLVED™