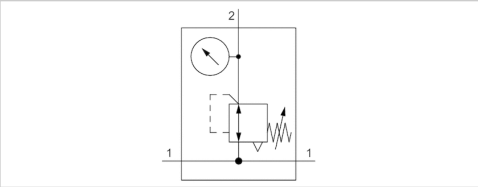





Pressure regulator, Series AS1-RGS-...-DS

- G 1/4
- Air supply left
- Qn = 1000 l/min
- Standard pressure regulator
- Activation Manual
- with continuous pressure supply
- with pressure gauge in hand wheel



Parts	Pressure regulator with continuous pressure supply
Mounting orientation	Any
Working pressure min./max.	See table below
Ambient temperature min./max.	-10 ... 50 °C
Medium temperature min./max.	-10 ... 50 °C
Medium	Compressed air Neutral gases
Regulator type	Diaphragm-type pressure regulator Can be assembled into blocks
Regulator function	with relieving air exhaust
Adjustment range min./max.	See table below
Pressure supply	double
Activation	Manual
Weight	0,239 kg

Technical data

Part No.		Port	Flow	Working pressure min./max.	Adjustment range min./max.
			Qn		
R412014642		G 1/4	1000 l/min	0,2 ... 12 bar	0,2 ... 4 bar
R412014643		G 1/4	1000 l/min	0,5 ... 12 bar	0,5 ... 8 bar
R412014644		G 1/4	1000 l/min	0,5 ... 12 bar	0,5 ... 10 bar

Part No.	Pressure gauge
R412014642	with pressure gauge in hand wheel
R412014643	with pressure gauge in hand wheel
R412014644	with pressure gauge in hand wheel

Panel nut included in scope of delivery, Nominal flow Qn with secondary pressure p2 = 6 bar at Δp = 1 bar

Technical information

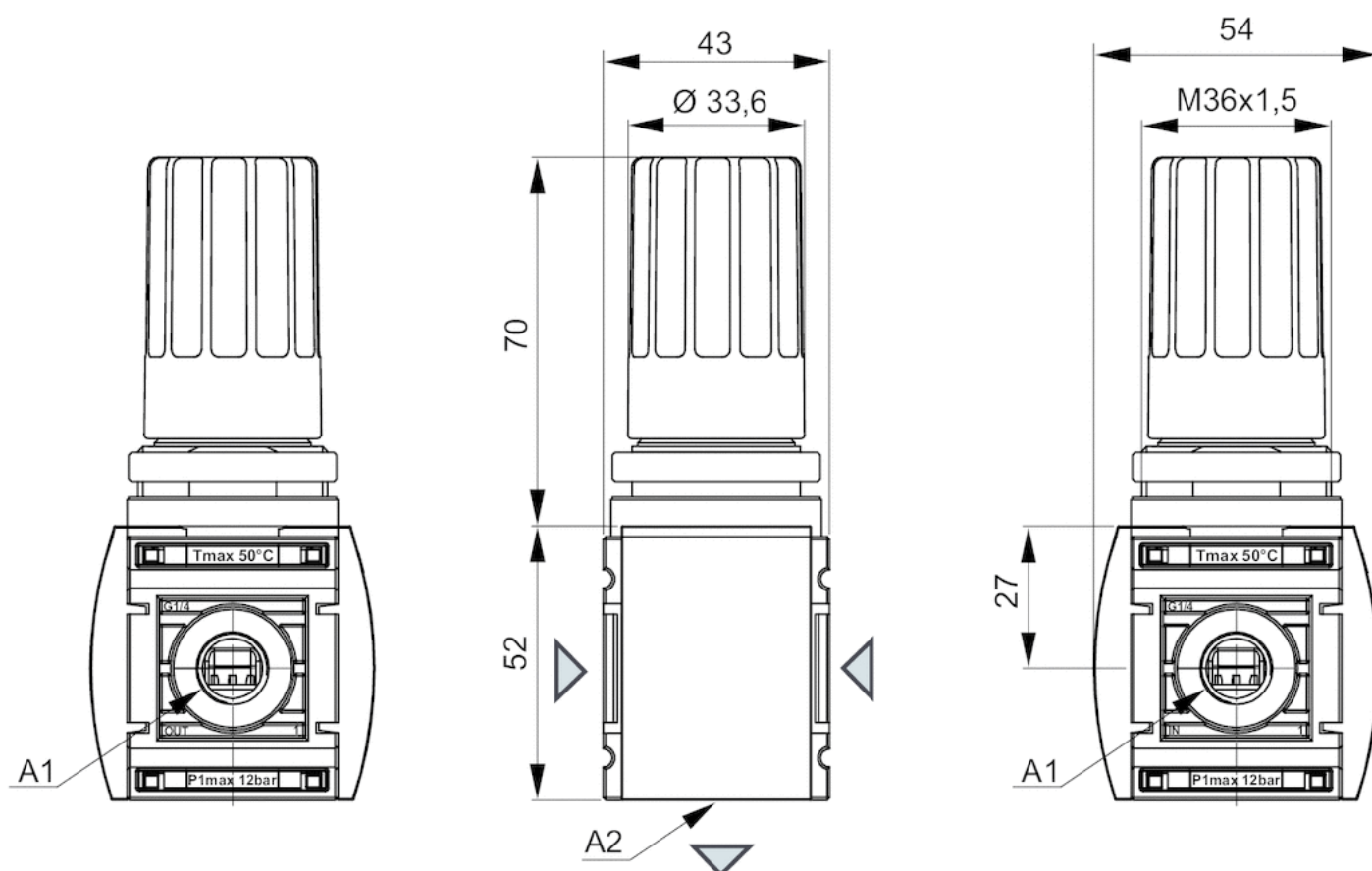
The pressure dew point must be at least 15 °C under ambient and medium temperature and may not exceed 3 °C .
 Relieving exhaust (≤ 0.3 bar over set pressure).
 With rear exhaust (> 3 bar).

Technical information

Material	
Housing	Polyamide
Front plate	Acrylonitrile butadiene styrene
Seals	Acrylonitrile butadiene rubber

Dimensions

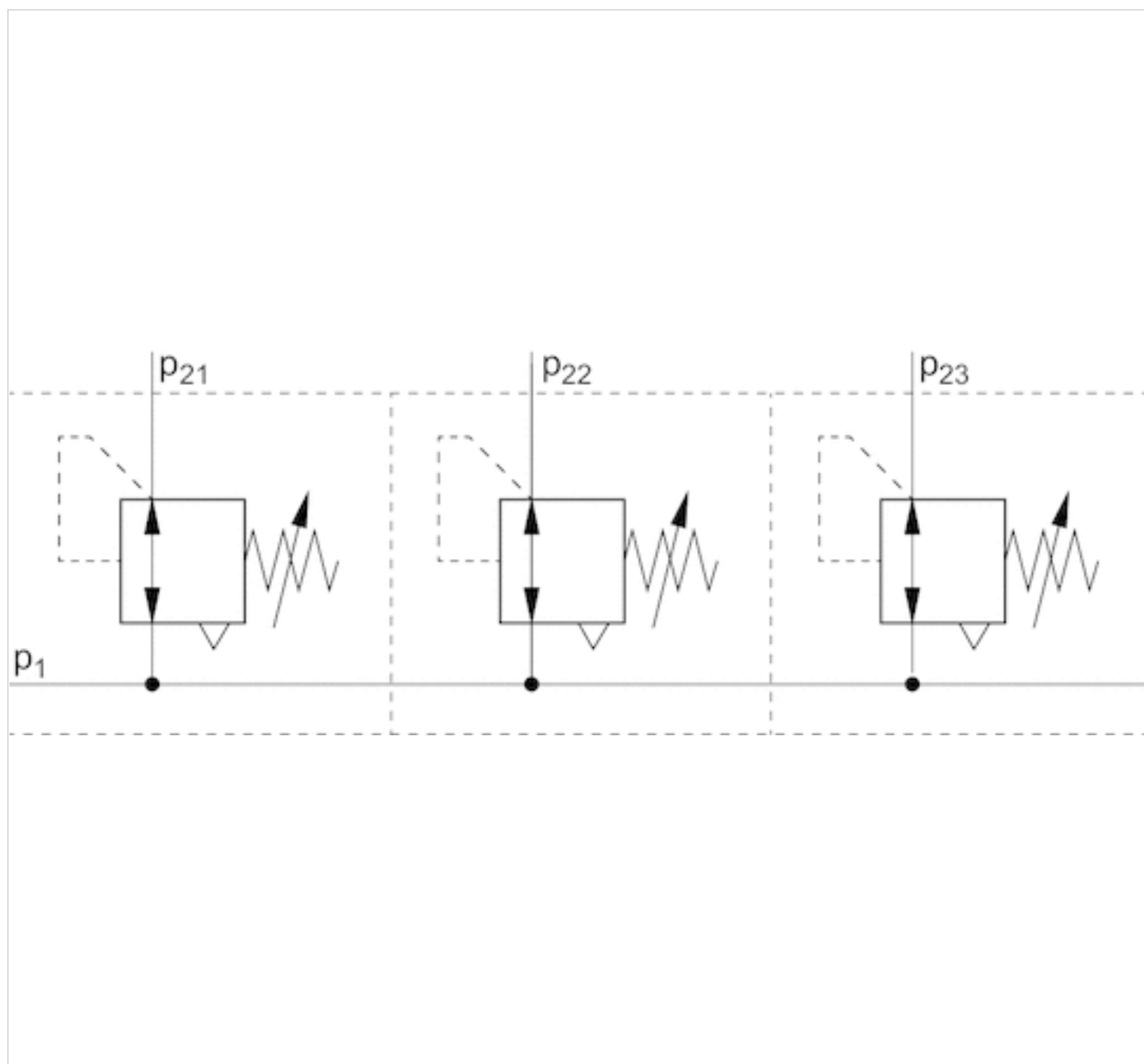
Dimensions in mm



A1 = input
A2 = output

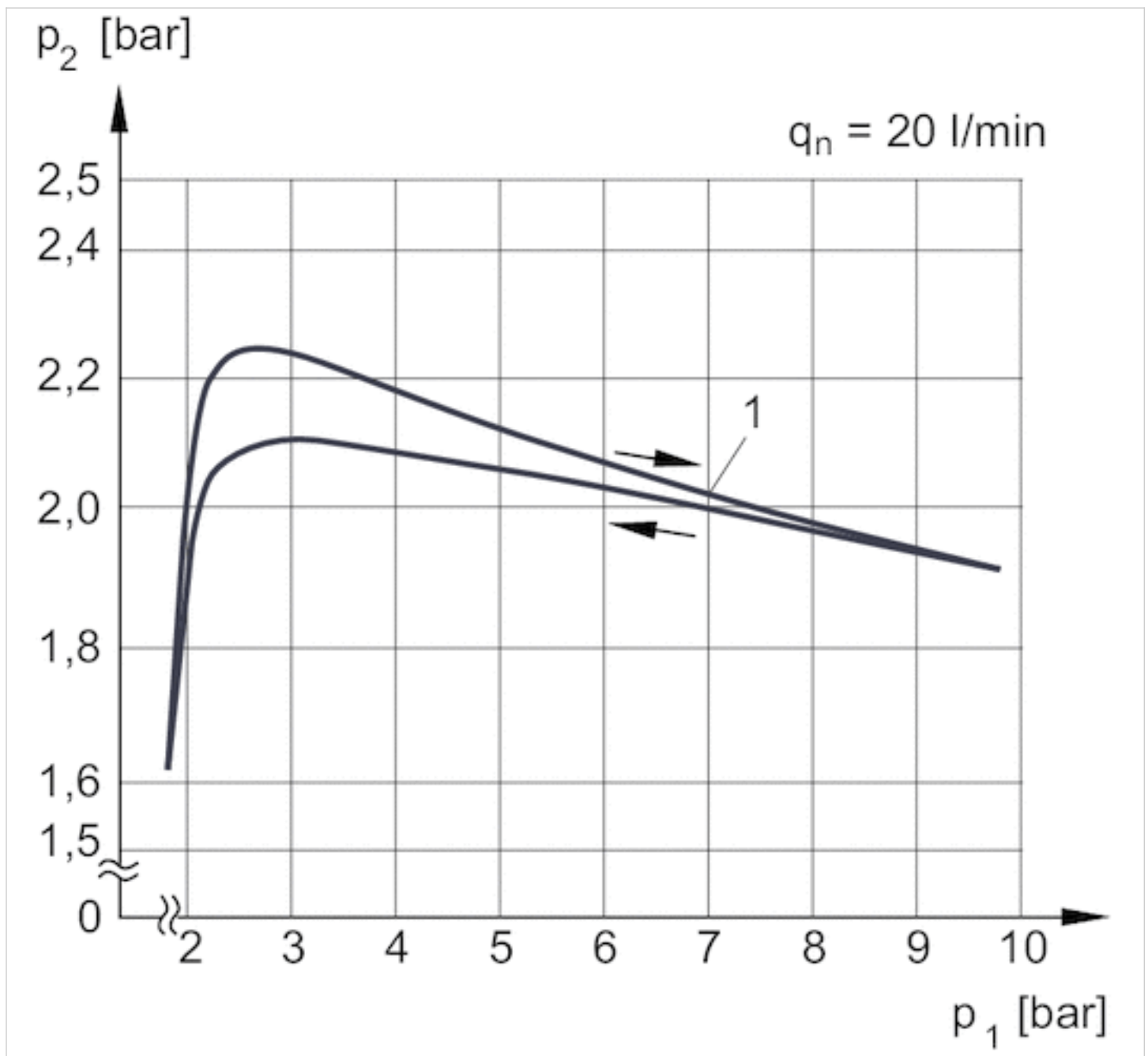
Diagrams

Application example



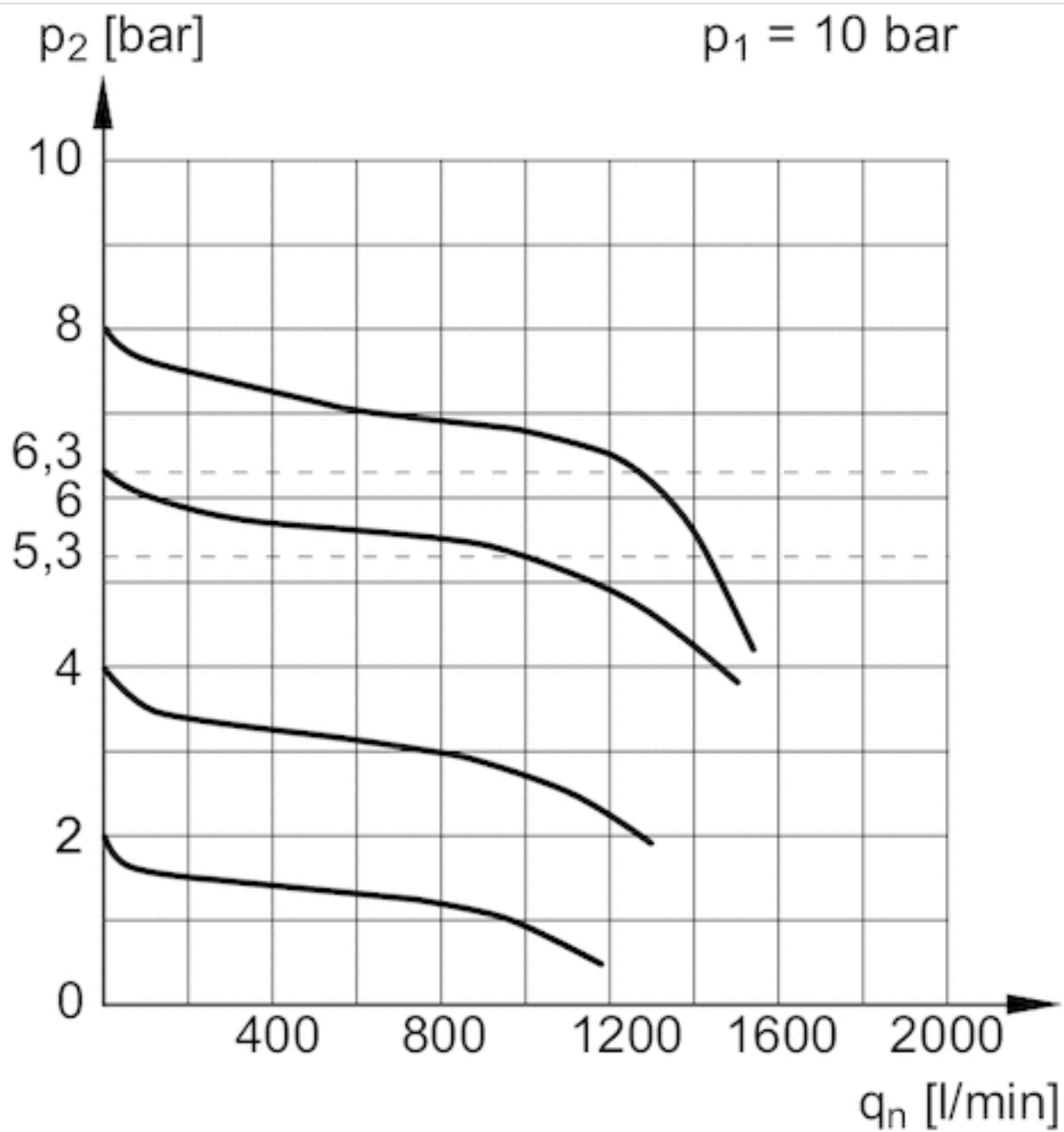
p_1 = working pressure

Pressure characteristics curve



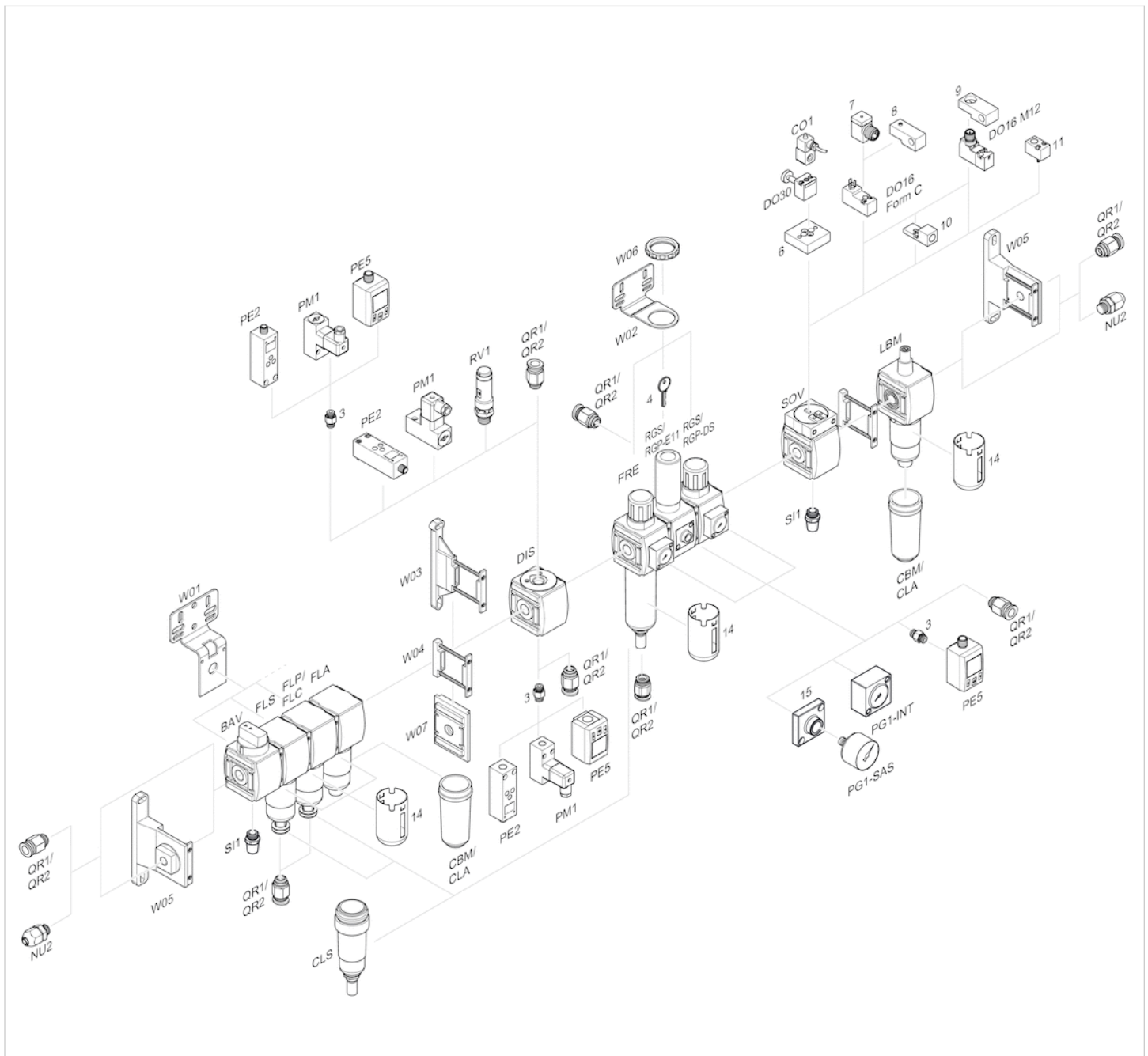
p_1 = working pressure
 p_2 = secondary pressure
 q_n = nominal flow
1) = Starting point

Flow rate characteristic



p_1 = working pressure
 p_2 = secondary pressure
 q_n = nominal flow

Accessories overview



- 3 = Double nipple
- 4 = Key for E11 locking
- 6 = Transition plate DO30
- 7 = Adapter, Series CON-VP
- 8 = Mounting aid DO16, form C
- 9 = Mounting aid DO16, M12
- 10 = Adapter for external pilot air
- 11 = Adapter pneumatic operation
- 14 = Protective guard
- 15 = Transition plate for assembling a pressure gauge with connection thread G 1/8

Efficient pneumatic solutions, our program: cylinders and drives, valves and valve systems, air supply management



Visit us: [Emerson.com/Aventics](https://www.emerson.com/Aventics)

Your local contact: [Emerson.com/contactus](https://www.emerson.com/contactus)



Emerson.com



Facebook.com/EmersonAutomationSolutions



LinkedIn.com/company/Emerson-Automation-Solutions



Twitter.com/EMR_Automation

An example configuration is depicted on the title page. The delivered product may thus vary from that in the illustration. Subject to change. This Document, as well as the data, specifications and other information set forth in it, are the exclusive property of AVENTICS GmbH. It may not be reproduced or given to third parties without its consent. Only use the AVENTICS products shown in industrial applications. Read the product documentation completely and carefully before using the product. Observe the applicable regulations and laws of the respective country. When integrating the product into applications, note the system manufacturer's specifications for safe use of the product. The data specified only serve to describe the product. No statements concerning a certain condition or suitability for a certain application can be derived from our information. The information given does not release the user from the obligation of own judgement and verification. It must be remembered that the products are subject to a natural process of wear and aging.

The Emerson logo is a trademark and service mark of Emerson Electric Co. Brand logotype are registered trademarks of one of the Emerson family of companies. All other marks are the property of their respective owners. © 2020 Emerson Electric Co. All rights reserved.
2020-12



CONSIDER IT SOLVED™