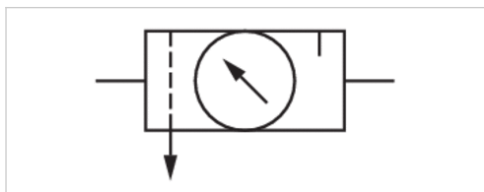


Universal air preparation unit, Series NLC

- G 1/4 G 3/8 G 1/2 G 3/4

- filter porosity 40 µm

- with pressure gauge



Type	1-part
Parts	Pressure regulator, Filter, Lubricator
Mounting orientation	vertical
Working pressure min./max.	0,5 ... 16 bar
Ambient temperature min./max.	-10 ... 60 °C
Medium temperature min./max.	-10 ... 60 °C
Medium	Compressed air Neutral gases
Regulator type	Diaphragm-type pressure regulator
Regulator function	with relieving air exhaust
Adjustment range min./max.	0,5 ... 10 bar
Pressure supply	single
Filter element	exchangeable
Type of filling	Manual oil filling
Weight	See table below

Technical data

Part No.	Frame size	Port	filter porosity	Flow	Filter reservoir volume	Lubricator reservoir volume
				Qn		
0821300030	2	G 1/4	40 µm	1400 l/min	25 cm ³	75 cm ³
0821300050	2	G 1/4	40 µm	1400 l/min	25 cm ³	75 cm ³
R412010828	2	G 1/4	40 µm	1400 l/min	25 cm ³	75 cm ³
0821300032	2	G 3/8	40 µm	1400 l/min	25 cm ³	75 cm ³
0821300052	2	G 3/8	40 µm	1400 l/min	25 cm ³	75 cm ³
R412010829	2	G 3/8	40 µm	1400 l/min	25 cm ³	75 cm ³
0821300040	4	G 1/2	40 µm	3200 l/min	75 cm ³	150 cm ³
0821300060	4	G 1/2	40 µm	3200 l/min	75 cm ³	150 cm ³
R412010830	4	G 1/2	40 µm	3200 l/min	75 cm ³	150 cm ³
0821300042	4	G 3/4	40 µm	3200 l/min	75 cm ³	150 cm ³
0821300062	4	G 3/4	40 µm	3200 l/min	75 cm ³	150 cm ³
R412010831	4	G 3/4	40 µm	3200 l/min	75 cm ³	150 cm ³

Part No.	Condensate drain	Pressure gauge	Protective guard
0821300030	Manual	with pressure gauge	-
0821300050	Manual	with pressure gauge	Steel
R412010828	semi-automatic, open without pressure	with pressure gauge	Steel
0821300032	Manual	with pressure gauge	-
0821300052	Manual	with pressure gauge	Steel
R412010829	semi-automatic, open without pressure	with pressure gauge	Steel

Part No.	Condensate drain	Pressure gauge	Protective guard
0821300040	Manual	with pressure gauge	-
0821300060	Manual	with pressure gauge	Steel
R412010830	semi-automatic, open without pressure	with pressure gauge	Steel
0821300042	Manual	with pressure gauge	-
0821300062	Manual	with pressure gauge	Steel
R412010831	semi-automatic, open without pressure	with pressure gauge	Steel

Part No.	Weight
0821300030	1,32 kg
0821300050	1,44 kg
R412010828	1,43 kg
0821300032	1,3 kg
0821300052	1,38 kg
R412010829	1,41 kg
0821300040	3,28 kg
0821300060	3,57 kg
R412010830	3,48 kg
0821300042	3,21 kg
0821300062	3,44 kg
R412010831	3,31 kg

Nominal flow Qn with secondary pressure p2 = 6 bar at $\Delta p = 1$ bar

Technical information

The pressure dew point must be at least 15 °C under ambient and medium temperature and may not exceed 3 °C .
Manual oil filling possible during operation.

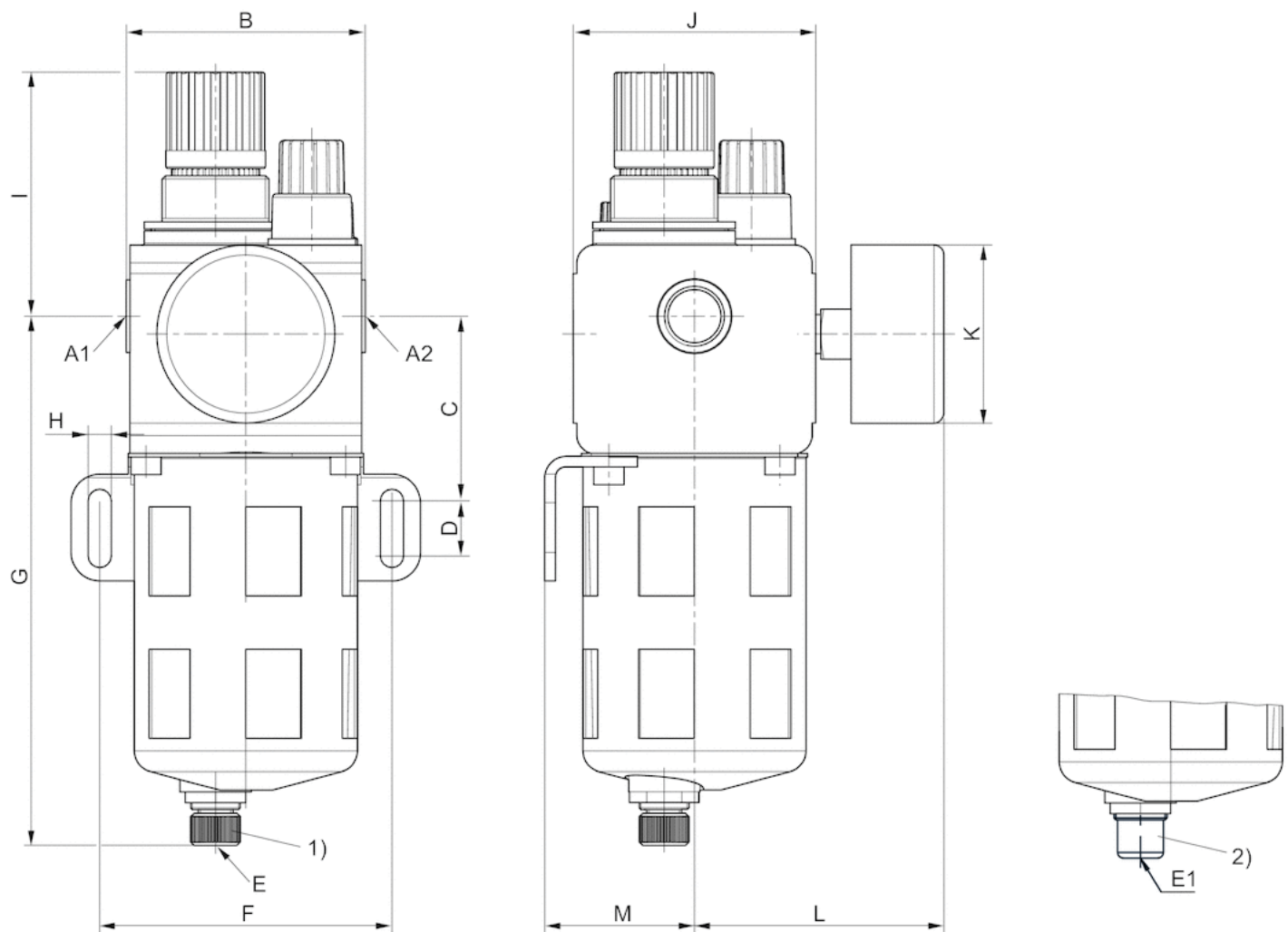
Oil dosing at 1000 l/min 1-2 drops

Technical information

Material	
Housing	Die cast zinc
Seals	Acrylonitrile butadiene rubber
Reservoir	Polycarbonate
Protective guard	Steel
Filter insert	Sintered bronze

Dimensions

Dimensions, Frame size 2



A1 = input

A2 = output

1) Fully automatic condensate drain

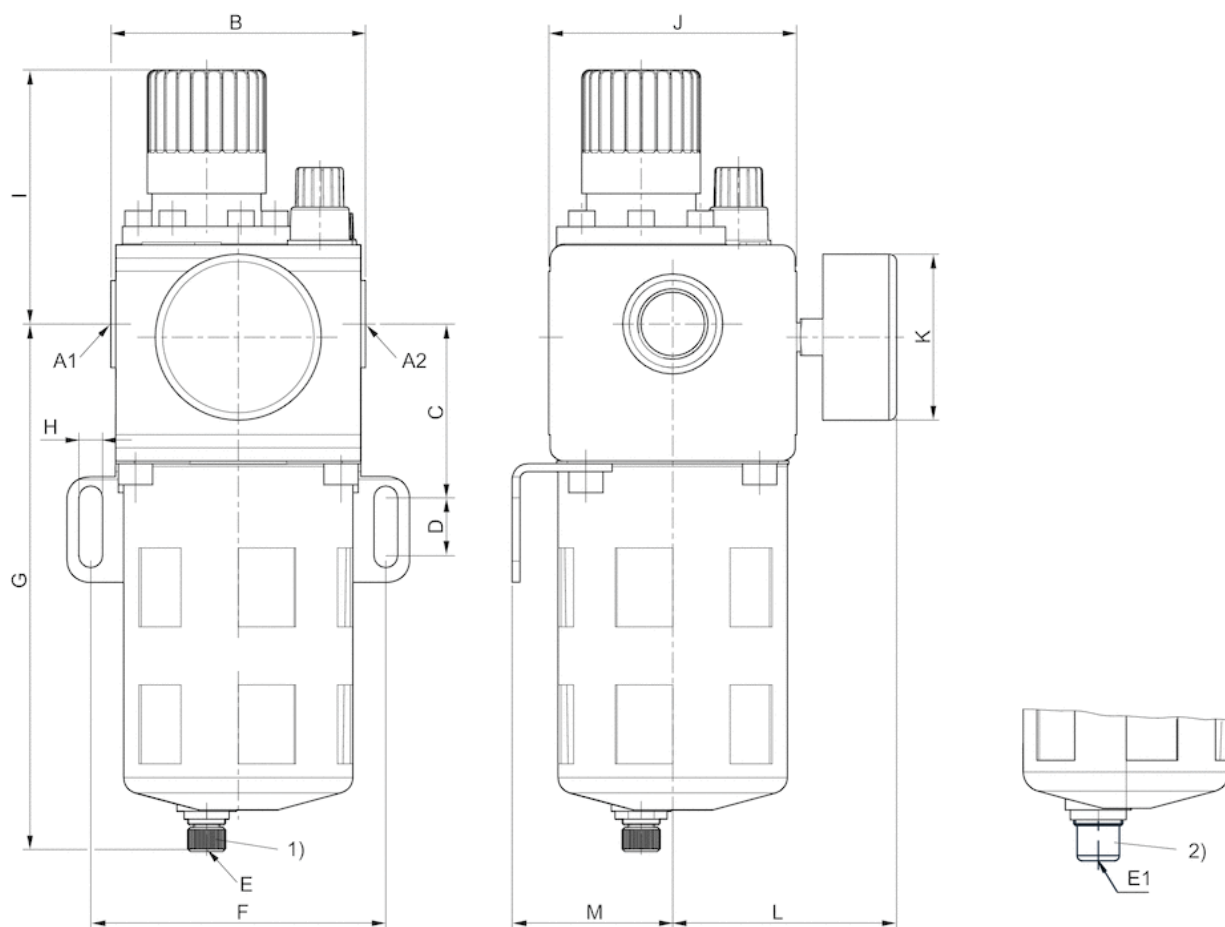
2) Semi-automatic condensate drain

Dimensions in mm

A1	A2	B	C	D	E	E1	F	G	H	I	J	K	L	M
G 1/4	G 1/4	66	52	15.5	SW5	G 1/8	82	148	6.5	69	65	50	70	42
G 3/8	G 1/4	66	52	15.5	SW5	G 1/8	82	148	6.5	69	65	50	70	42

Dimensions

Dimensions, Frame size 4



A1 = input

A2 = output

1) Fully automatic condensate drain

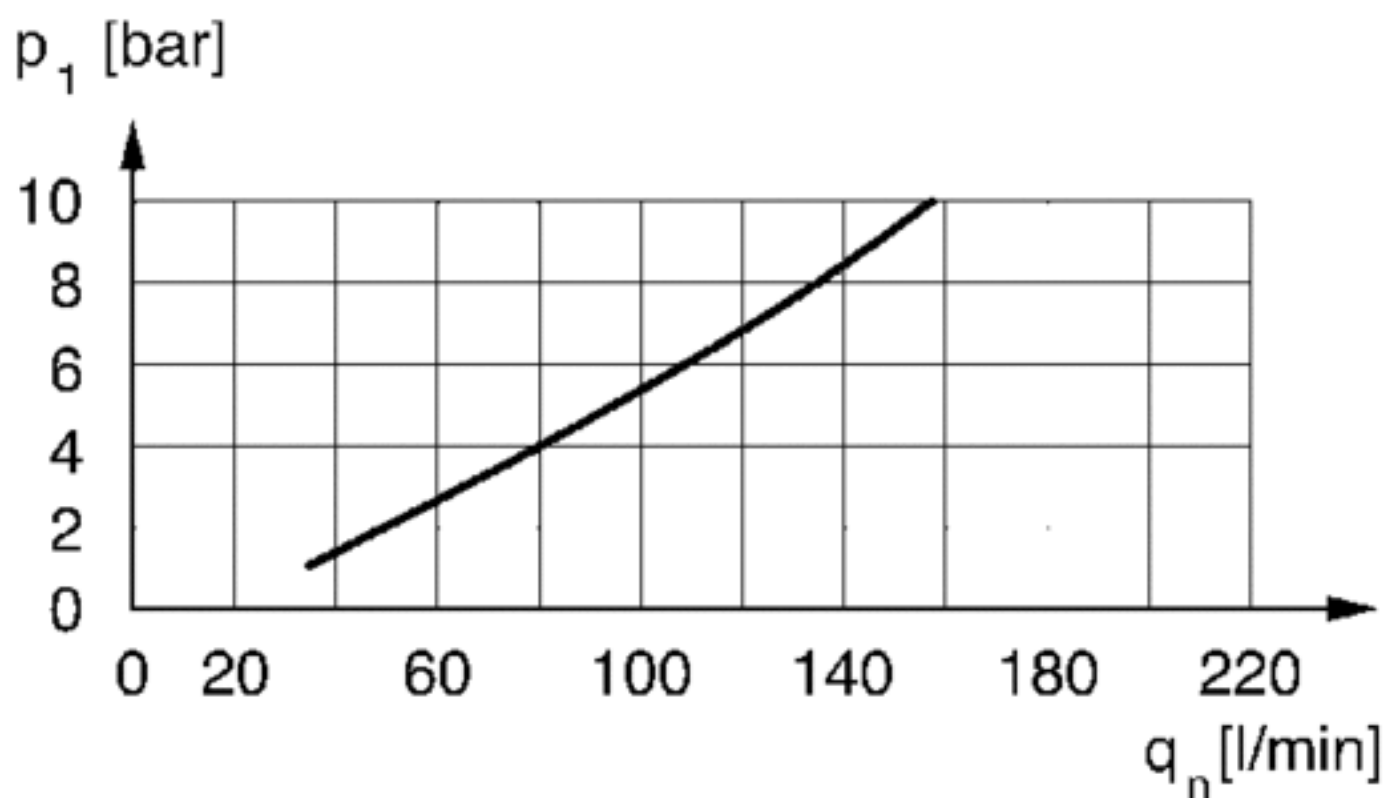
2) Semi-automatic condensate drain

Dimensions in mm

A1	A2	B	C	D	E	E1	F	G	H	I	J	K	L	M
G 1/4	G 3/4	93	66	22	G 1/8	G 1/8	112	200	9	97	92	63	85	61
G 1/2	G 3/4	93	66	22	G 1/8	G 1/8	112	200	9	97	92	63	85	61
G 3/4	G 3/4	93	66	22	G 1/8	G 1/8	112	200	9	97	92	63	85	61

Diagrams

Lubricator activation margin, size 2

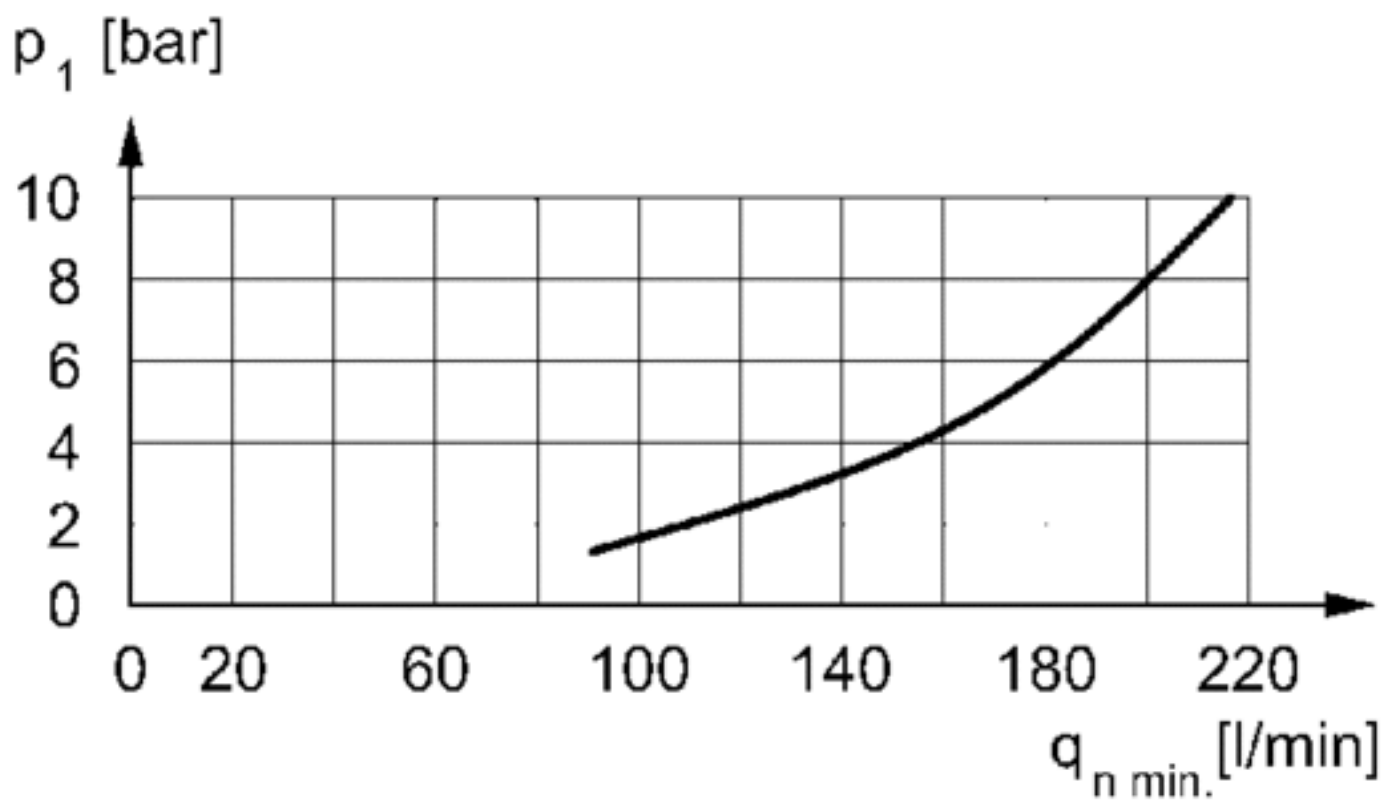


p_1 = working pressure

q_n = nominal flow

Flow rate necessary for the correct functioning of the lubricator

Lubricator activation margin, size 4

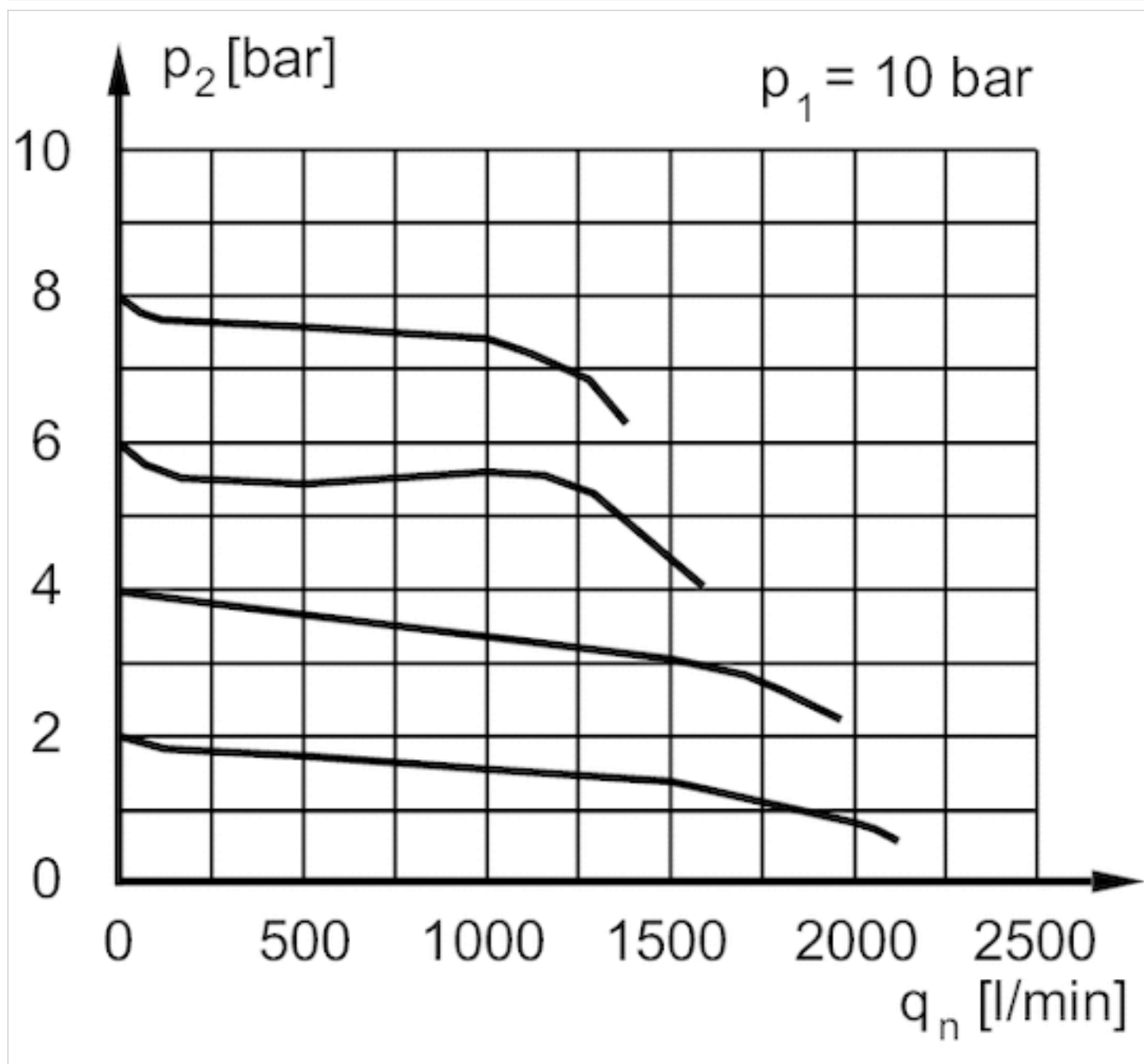


p_1 = working pressure

q_n = nominal flow

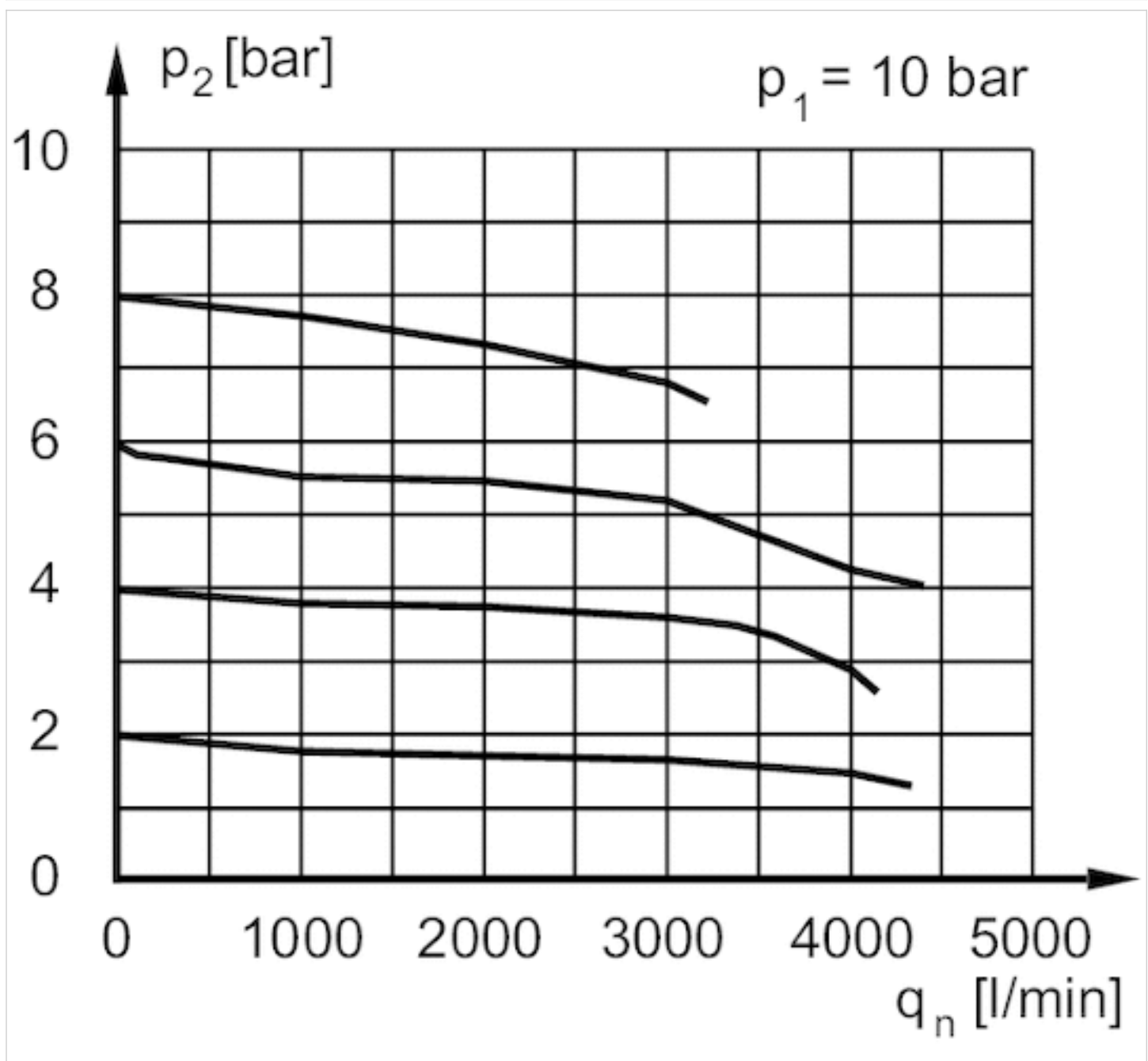
Flow rate necessary for the correct functioning of the lubricator

Flow rate characteristic, size 2



p1 = working pressure
p2 = secondary pressure
qn = nominal flow

Flow rate characteristic, size 4



p_1 = working pressure
 p_2 = secondary pressure
 q_n = nominal flow

Efficient pneumatic solutions, our program: cylinders and drives, valves and valve systems, air supply management



Visit us: [Emerson.com/Aventics](https://www.emerson.com/Aventics)

Your local contact: [Emerson.com/contactus](https://www.emerson.com/contactus)



Emerson.com



Facebook.com/EmersonAutomationSolutions



LinkedIn.com/company/Emerson-Automation-Solutions



Twitter.com/EMR_Automation

An example configuration is depicted on the title page. The delivered product may thus vary from that in the illustration. Subject to change. This Document, as well as the data, specifications and other information set forth in it, are the exclusive property of AVENTICS GmbH. It may not be reproduced or given to third parties without its consent. Only use the AVENTICS products shown in industrial applications. Read the product documentation completely and carefully before using the product. Observe the applicable regulations and laws of the respective country. When integrating the product into applications, note the system manufacturer's specifications for safe use of the product. The data specified only serve to describe the product. No statements concerning a certain condition or suitability for a certain application can be derived from our information. The information given does not release the user from the obligation of own judgement and verification. It must be remembered that the products are subject to a natural process of wear and aging.

The Emerson logo is a trademark and service mark of Emerson Electric Co. Brand logotype are registered trademarks of one of the Emerson family of companies. All other marks are the property of their respective owners. © 2020 Emerson Electric Co. All rights reserved.
2020-12



CONSIDER IT SOLVED™