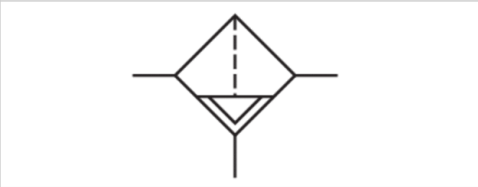


Active carbon filter, Series NL2-FLA

- G 1/4
- suitable for ATEX



Type	Active carbon filter, Can be assembled into blocks
Parts	Active carbon filter
Mounting orientation	vertical
Certificates	suitable for ATEX
Working pressure min./max.	0,5 ... 16 bar
Ambient temperature min./max.	-10 ... 60 °C
Medium temperature min./max.	-10 ... 60 °C
Medium	Compressed air Neutral gases
Filter reservoir volume	10 cm³
Filter element	exchangeable
Weight	0,432 kg

Technical data

Part No.	Port	Flow Qn
R412010792	G 1/4	380 l/min

Nominal flow Qn with secondary pressure p2 = 6 bar at Δp = 0.1 bar
Suitable for use in Ex zones 1, 2, 21, 22., Metal protective guard can be retrofitted for all polycarbonate reservoirs

Technical information

The pressure dew point must be at least 15 °C under ambient and medium temperature and may not exceed 3 °C .
Suitable for use in Ex zones 1, 2, 21, 22.
A change in the flow direction (from air supply on the left to air supply on the right) occurs by rotating installation by 180° about the vertical axis. Please see the operating instructions for further details.
Recommended pre-filtering 0,01 µm
Max. achievable compressed air class acc. to ISO 8573-1:2010 - : - : 1

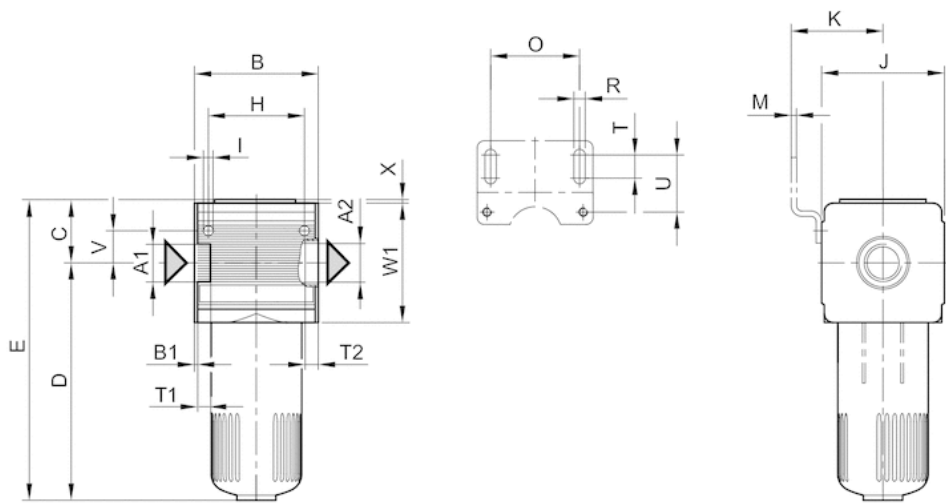
Technical information

Material	
Housing	Die cast zinc
Front plate	Acrylonitrile butadiene styrene
Seals	Acrylonitrile butadiene rubber
Reservoir	Die cast zinc

Material	
Filter insert	Active carbon

Dimensions

Dimensions



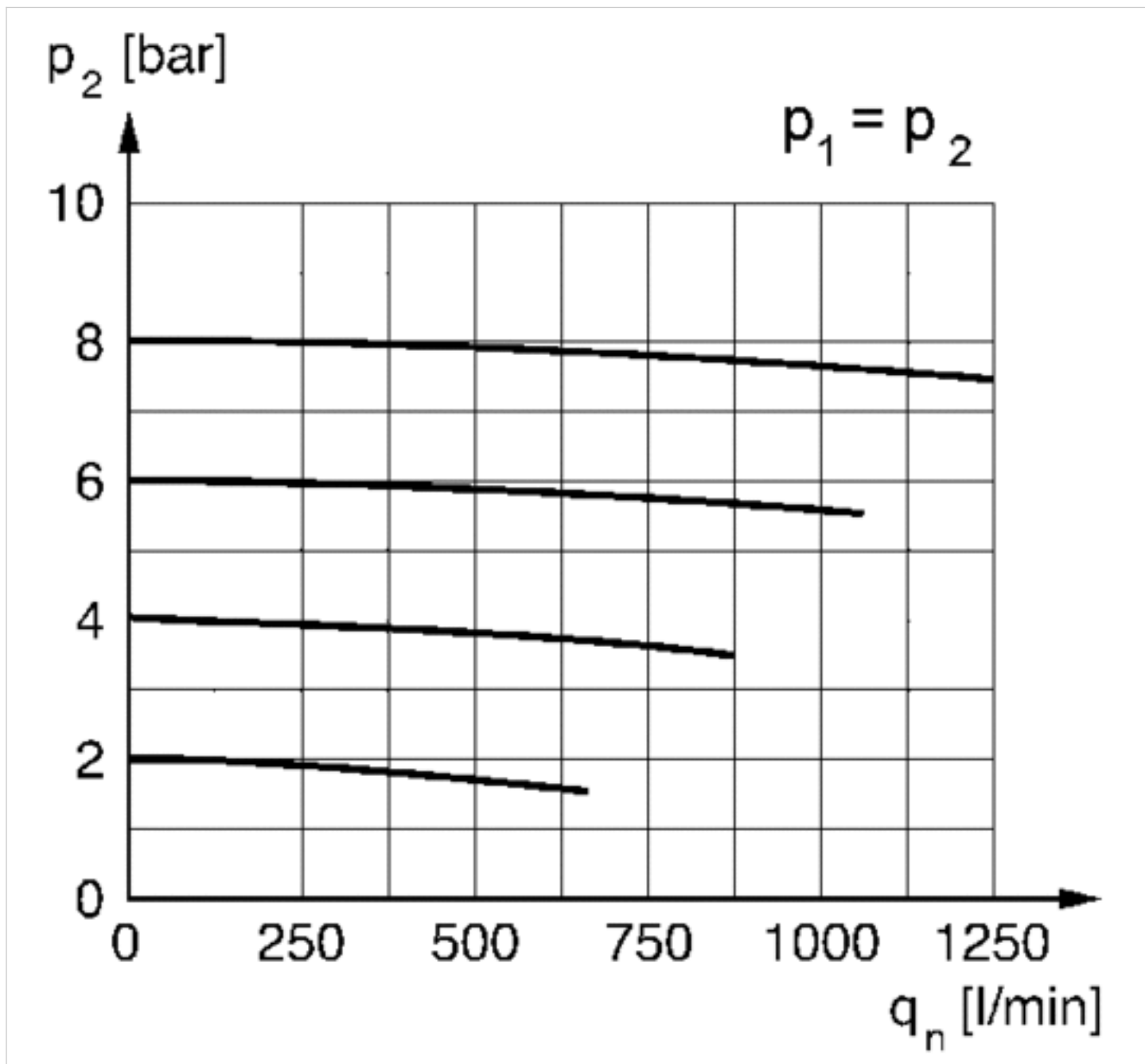
A1 = input
A2 = output

Dimensions in mm

A1	A2	B	B1	C	D	E	H	I	J	K	M	O	R	T	T1	T2	U	V	W1	X
G 1/4	G 1/4	48	1.5	27.5	109	136.5	36	4.4	47	43.5	3	38	5.4	8	9.5	9.5	27.5	12.3	52	1.5

Diagrams

Flow rate characteristic



p_2 = secondary pressure
 q_n = nominal flow

Efficient pneumatic solutions, our program: cylinders and drives, valves and valve systems, air supply management



Visit us: [Emerson.com/Aventics](https://emerson.com/aventics)

Your local contact: [Emerson.com/contactus](https://emerson.com/contactus)



Emerson.com



Facebook.com/EmersonAutomationSolutions



LinkedIn.com/company/Emerson-Automation-Solutions



Twitter.com/EMR_Automation

An example configuration is depicted on the title page. The delivered product may thus vary from that in the illustration. Subject to change. This Document, as well as the data, specifications and other information set forth in it, are the exclusive property of AVENTICS GmbH. It may not be reproduced or given to third parties without its consent. Only use the AVENTICS products shown in industrial applications. Read the product documentation completely and carefully before using the product. Observe the applicable regulations and laws of the respective country. When integrating the product into applications, note the system manufacturer's specifications for safe use of the product. The data specified only serve to describe the product. No statements concerning a certain condition or suitability for a certain application can be derived from our information. The information given does not release the user from the obligation of own judgement and verification. It must be remembered that the products are subject to a natural process of wear and aging.

The Emerson logo is a trademark and service mark of Emerson Electric Co. Brand logotype are registered trademarks of one of the Emerson family of companies. All other marks are the property of their respective owners. © 2020 Emerson Electric Co. All rights reserved.
2020-12



CONSIDER IT SOLVED™