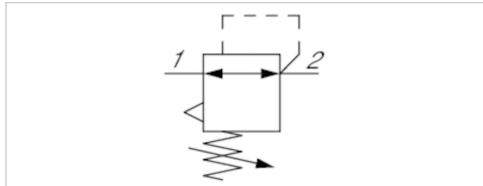


# Pressure regulator, Series AS1-RGS-...-E11

- G 1/4
- Air supply left
- $Q_n = 1000 \text{ l/min}$
- Standard pressure regulator
- Activation Manual
- lockable
- with E11 locking



Parts	Pressure regulator
Mounting orientation	Any
Working pressure min./max.	See table below
Ambient temperature min./max.	-10 ... 50 °C
Medium temperature min./max.	-10 ... 50 °C
Medium	Compressed air Neutral gases
Regulator type	Diaphragm-type pressure regulator Can be assembled into blocks with relieving air exhaust
Regulator function	See table below
Adjustment range min./max.	with E11 locking
Lock type	Manual
Activation	0,206 kg
Weight	

## Technical data

Part No.	Port	Flow	Working pressure min./max.	Adjustment range min./max.
		$Q_n$		
R412010648	G 1/4	1000 l/min	0,5 ... 12 bar	0,5 ... 10 bar
R412010649	G 1/4	1000 l/min	0,2 ... 12 bar	0,2 ... 4 bar

Part No.	Max. pressure gauge Ø in blocked state
R412010648	40 mm
R412010649	40 mm

Order pressure gauge separately, Nominal flow  $Q_n$  with secondary pressure  $p_2 = 6 \text{ bar}$  at  $\Delta p = 1 \text{ bar}$

## Technical information

The pressure dew point must be at least 15 °C under ambient and medium temperature and may not exceed 3 °C .

Relieving exhaust ( $\leq 0.3 \text{ bar}$  over set pressure).

With rear exhaust ( $> 3 \text{ bar}$  ).

The E11 locking is delivered without a key (see accessories for keys).

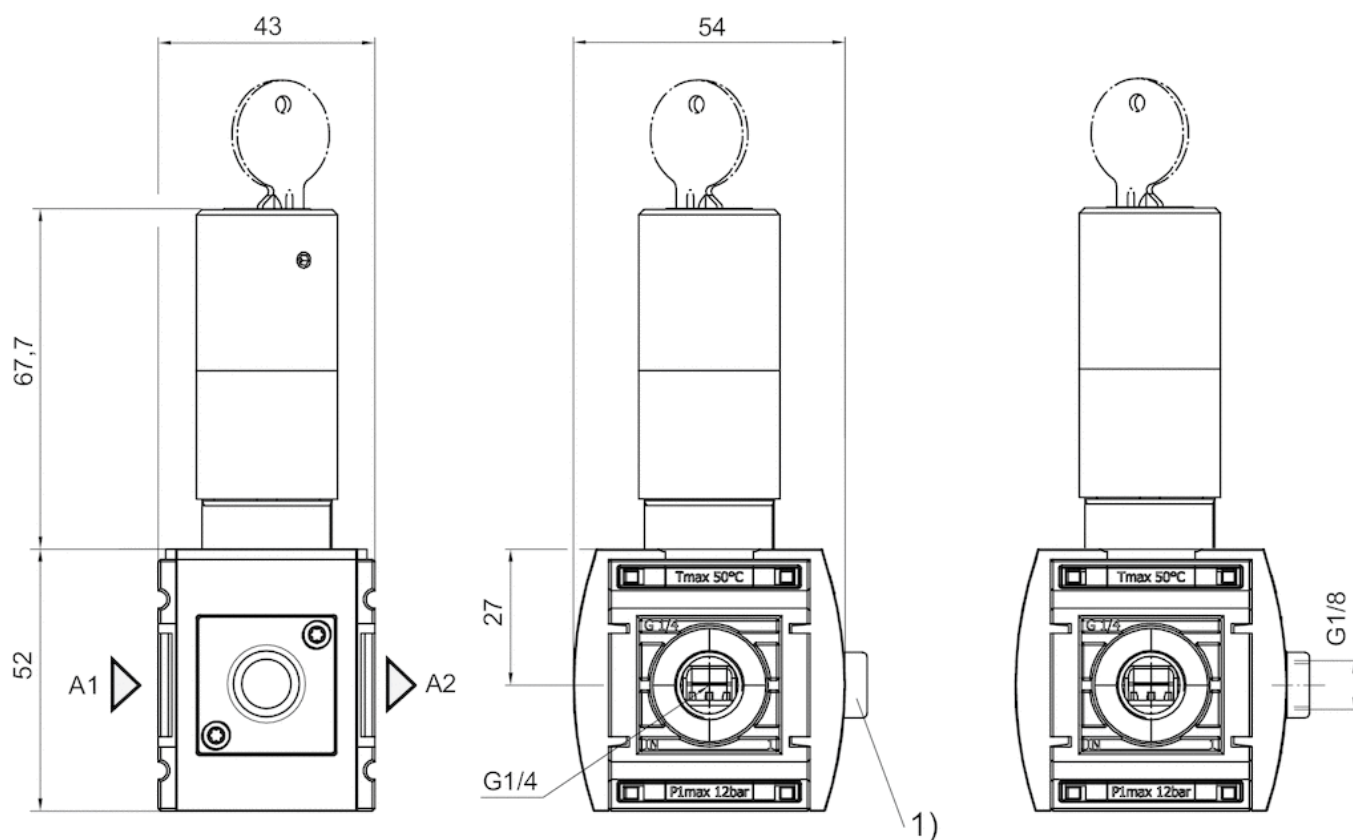
The rear pressure gauge connection on the pressure regulator is closed with a blanking plug, the front connection is open. Depending on the customer application, a second blanking plug may be necessary. Please order separately (see accessories).

## Technical information

Material	
Housing	Polyamide
Front plate	Acrylonitrile butadiene styrene
Seals	Acrylonitrile butadiene rubber

## Dimensions

### Dimensions

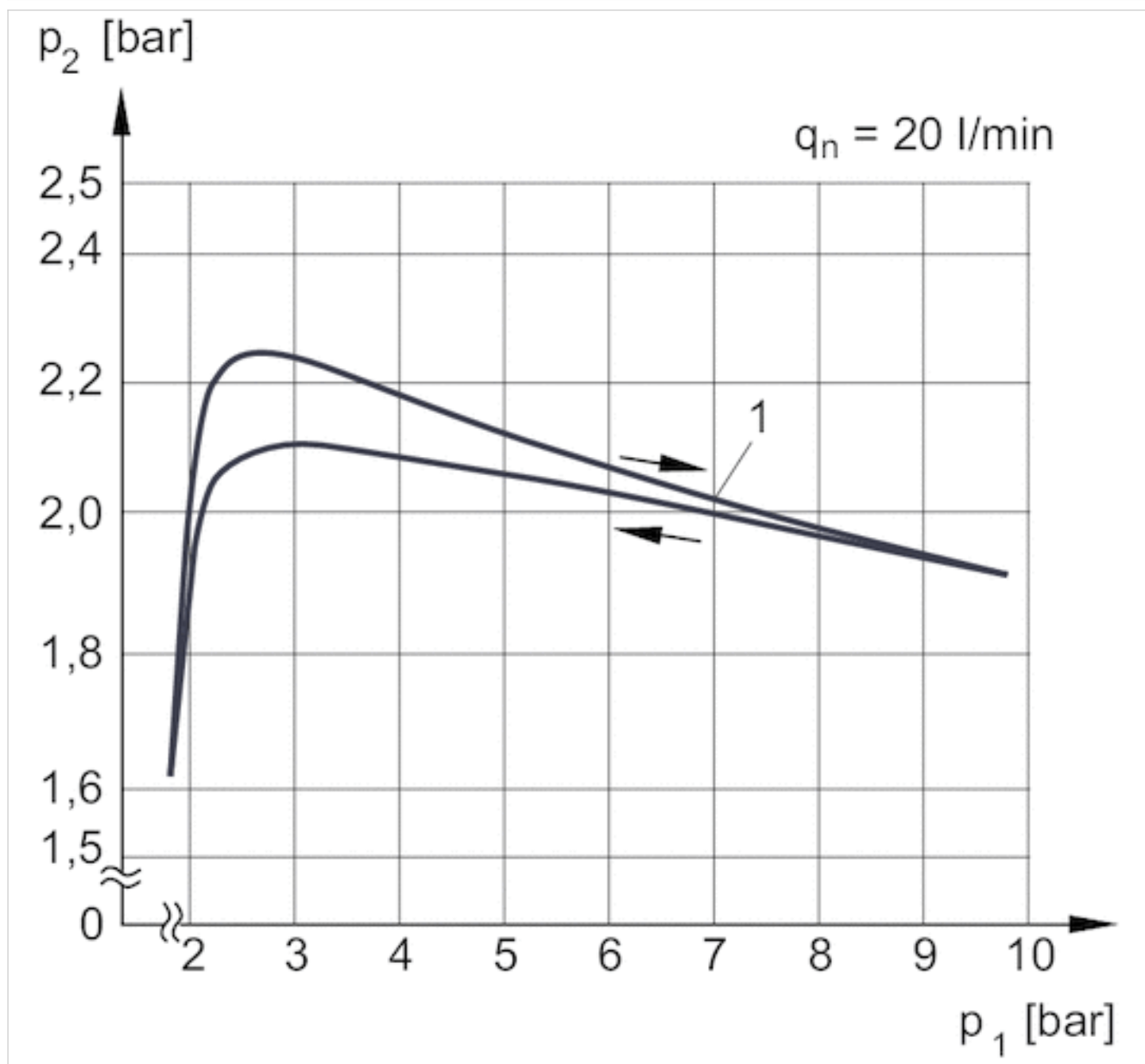


A1 = input  
A2 = output  
1) Adapter

Order pressure gauge separately

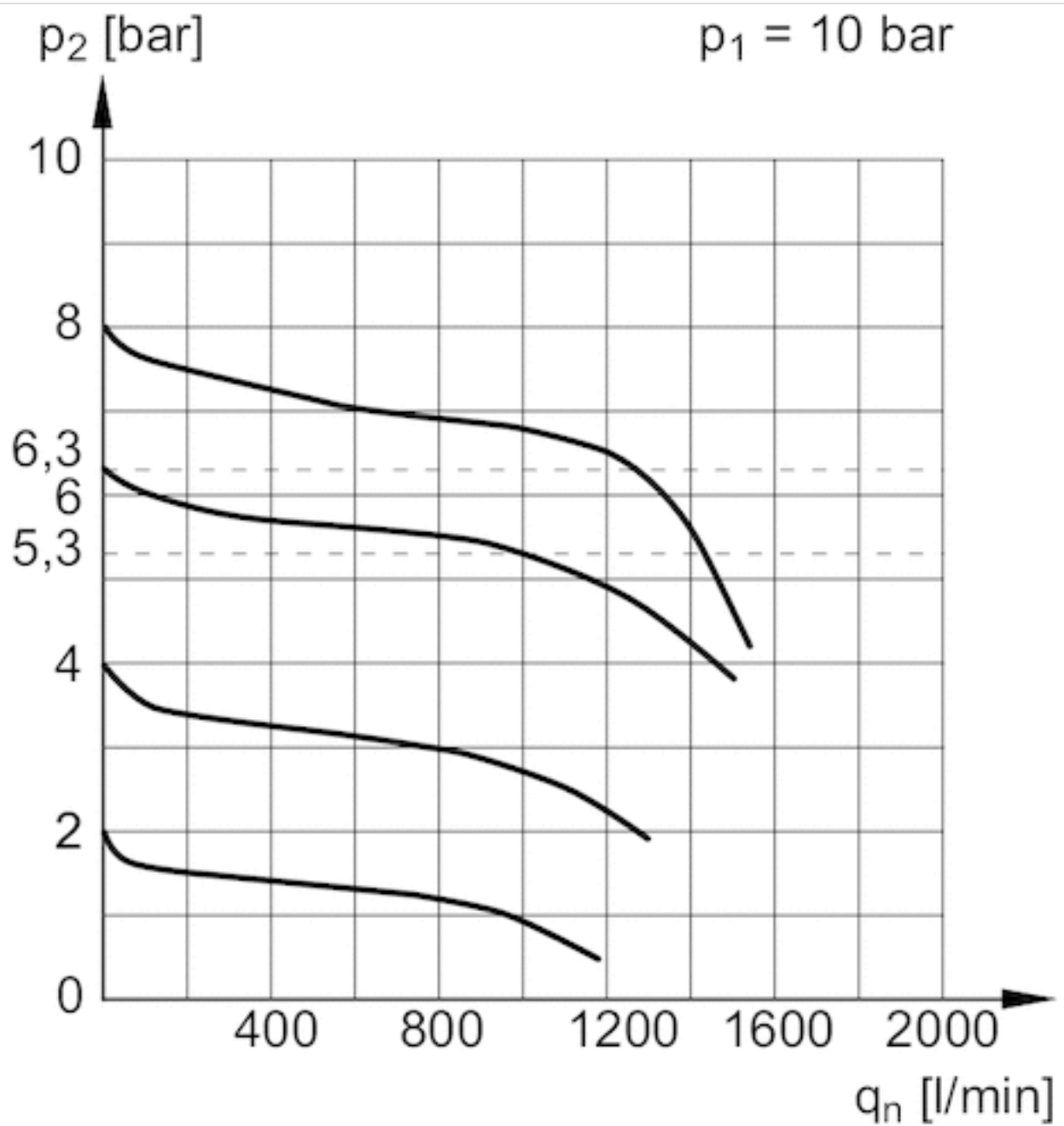
## Diagrams

## Pressure characteristics curve



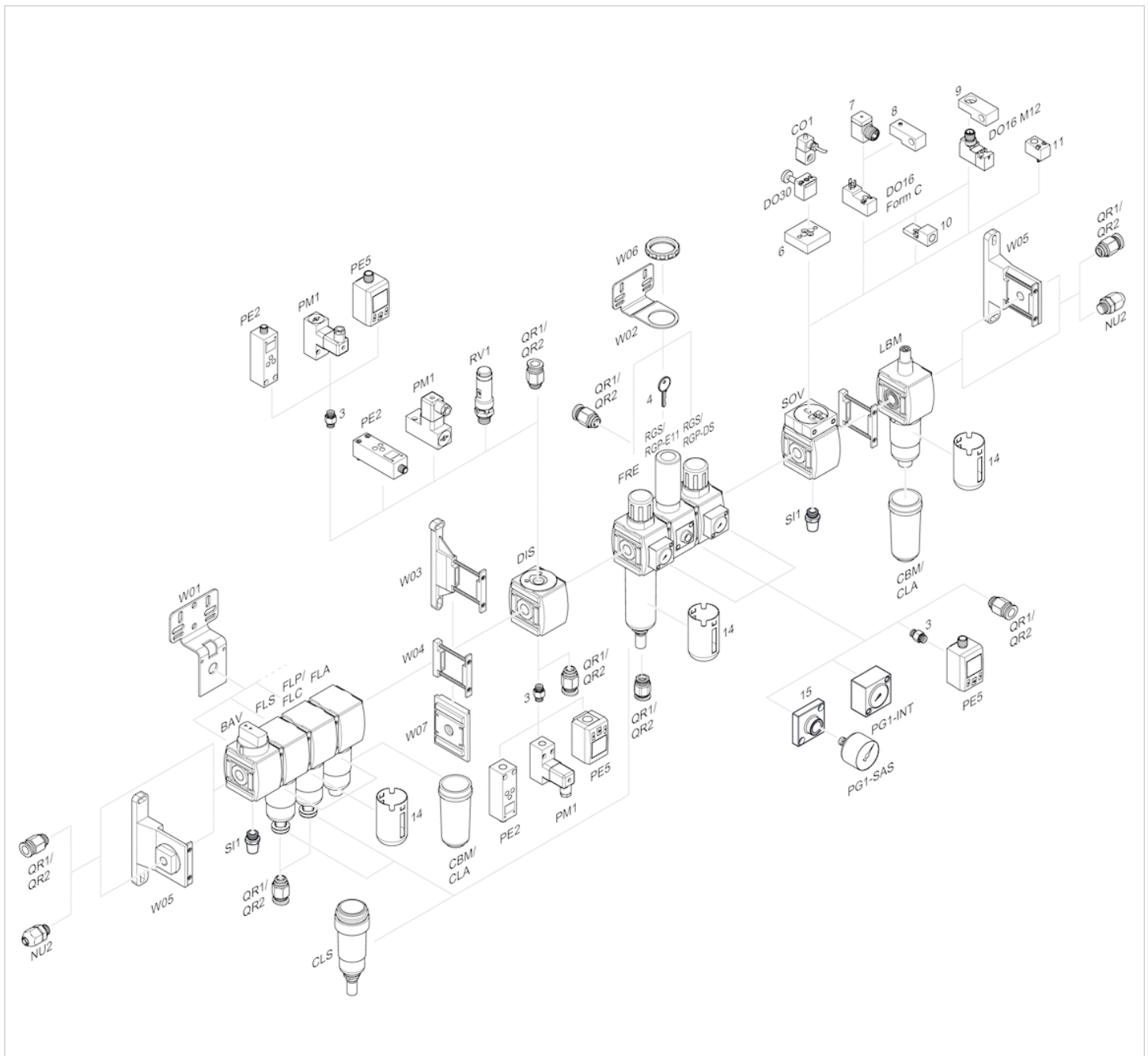
$p_1$  = working pressure  
 $p_2$  = secondary pressure  
 $q_n$  = nominal flow  
 1) = Starting point

## Flow rate characteristic



$p_1$  = working pressure  
 $p_2$  = secondary pressure  
 $q_n$  = nominal flow

## Accessories overview



- 3 = Double nipple
- 4 = Key for E11 locking
- 6 = Transition plate DO30
- 7 = Adapter, Series CON-VP
- 8 = Mounting aid DO16, form C
- 9 = Mounting aid DO16, M12
- 10 = Adapter for external pilot air
- 11 = Adapter pneumatic operation
- 14 = Protective guard
- 15 = Transition plate for assembling a pressure gauge with connection thread G 1/8

# Efficient pneumatic solutions, our program: cylinders and drives, valves and valve systems, air supply management



Visit us: [Emerson.com/Aventics](https://www.emerson.com/Aventics)

Your local contact: [Emerson.com/contactus](https://www.emerson.com/contactus)



Emerson.com



Facebook.com/EmersonAutomationSolutions



LinkedIn.com/company/Emerson-Automation-Solutions



Twitter.com/EMR\_Automation

An example configuration is depicted on the title page. The delivered product may thus vary from that in the illustration. Subject to change. This Document, as well as the data, specifications and other information set forth in it, are the exclusive property of AVENTICS GmbH. It may not be reproduced or given to third parties without its consent. Only use the AVENTICS products shown in industrial applications. Read the product documentation completely and carefully before using the product. Observe the applicable regulations and laws of the respective country. When integrating the product into applications, note the system manufacturer's specifications for safe use of the product. The data specified only serve to describe the product. No statements concerning a certain condition or suitability for a certain application can be derived from our information. The information given does not release the user from the obligation of own judgement and verification. It must be remembered that the products are subject to a natural process of wear and aging.

The Emerson logo is a trademark and service mark of Emerson Electric Co. Brand logotype are registered trademarks of one of the Emerson family of companies. All other marks are the property of their respective owners. © 2020 Emerson Electric Co. All rights reserved.  
2020-12



## CONSIDER IT SOLVED™