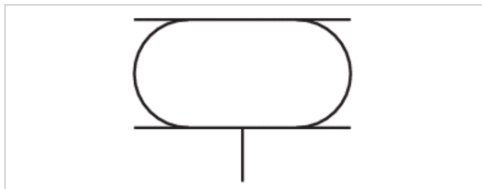


Series BCP

- Corrosion-resistant version
- double
- Stroke 108-223 mm



Working pressure min./max.	0 ... 8 bar
Ambient temperature min./max.	-40 ... 70 °C
Medium	Compressed air
Permissible angle of tilt max.	25 °
Weight	See table below

Technical data

Part No.	Cover diameter	Compressed air connection	Max. effective stroke
		G	
R412010221	108 mm	G 1/4	108 mm
R412010222	141 mm	G 3/4	153 mm
R412010223	161 mm	G 3/4	223 mm
R412010224	228 mm	G 3/4	223 mm
R412010225	287 mm	G 3/4	223 mm

Part No.	Min. radial installation space	Force min./max.	Weight	Fig.
R412010221	180 mm	3500 ... 8700 N	1,5 kg	Fig. 1
R412010222	235 mm	7700 ... 14800 N	2,3 kg	Fig. 1
R412010223	275 mm	8200 ... 19500 N	3,5 kg	Fig. 2
R412010224	355 mm	20500 ... 36800 N	5,1 kg	Fig. 2
R412010225	415 mm	27800 ... 52600 N	7,3 kg	Fig. 3

Technical information

Compliance with the minimum height H min. as well as the maximum height H max. must be ensured with end stops.

Use at operating height $\geq H_{max}$: only permitted upon approval by AVENTICS

Further information on vibration isolation can be found in the "Technical information" document (available in the MediaCentre).

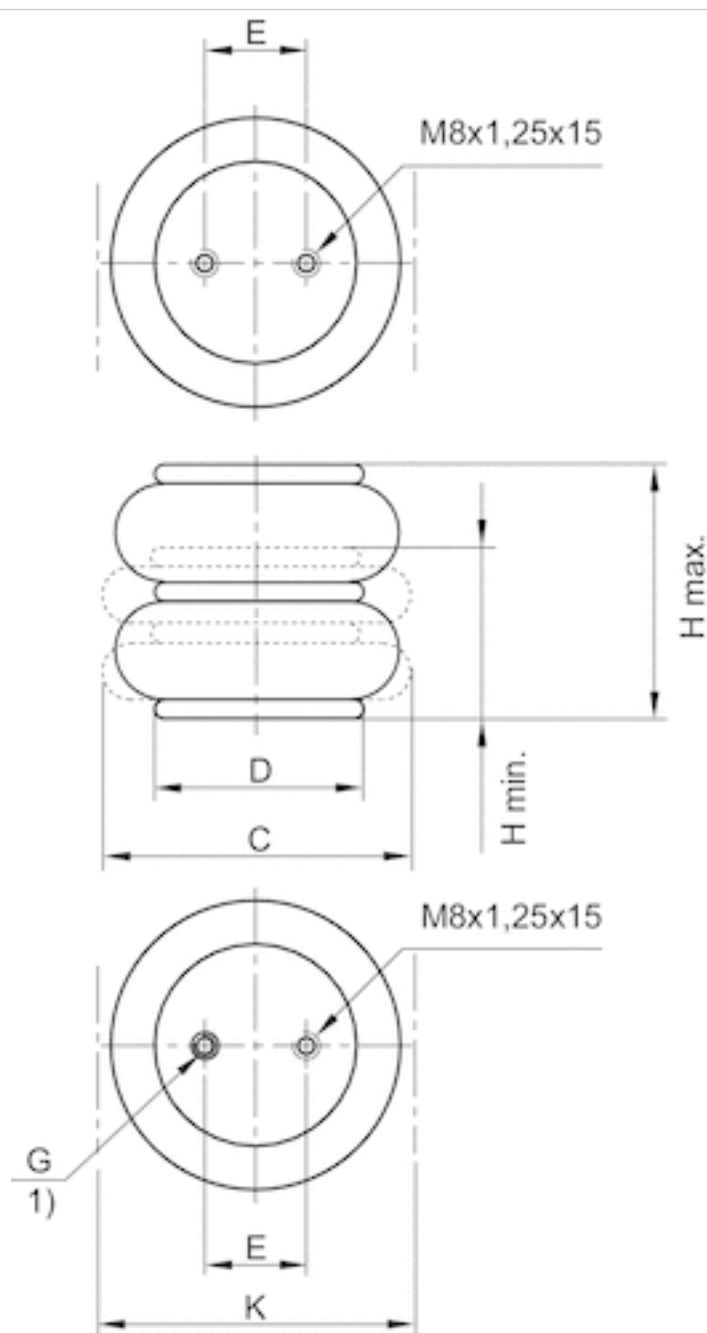
Reduced service life at a temperature greater than 50 °C

Technical information

Material	
Bellow	caoutchouc/butadiene caoutchouc
Front cover	Stainless steel
End cover	Stainless steel

Dimensions

Fig. 1



1) air connection in the mounting hole

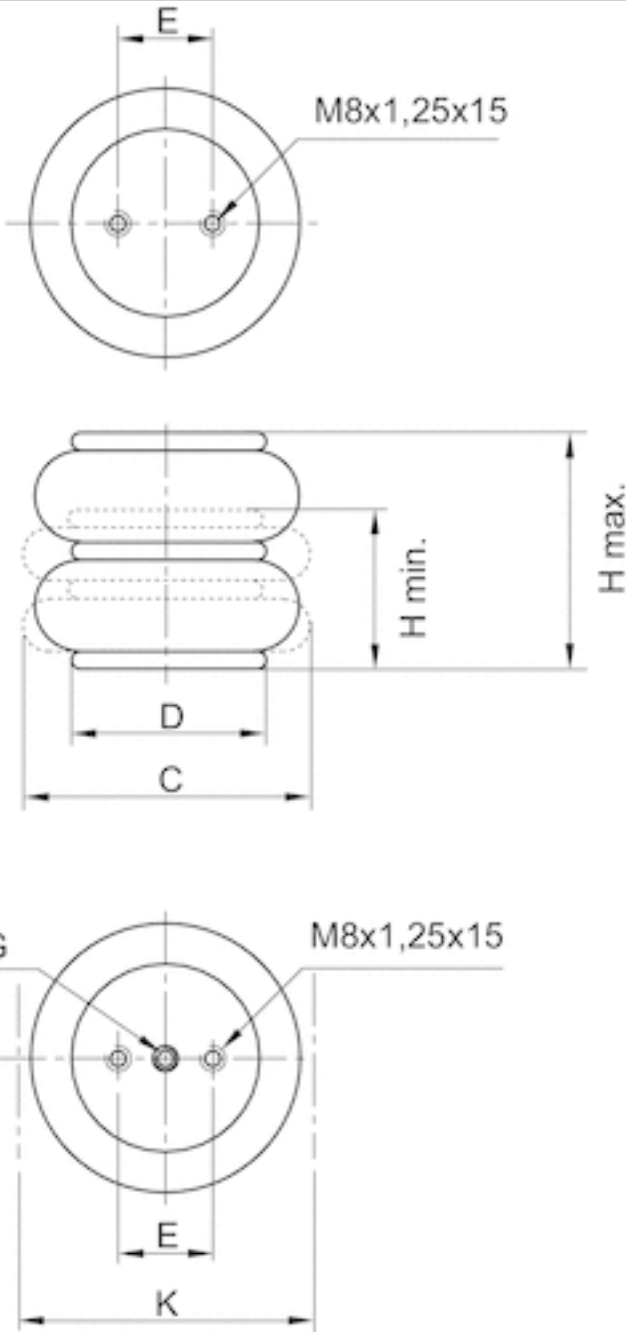
Dimensions

Part No.	Compressed air connection G	H min. mm	C mm	D mm	E ±0,5 [mm]
R412010221	G 1/4	72 mm	165 mm	108 mm	44.5
R412010222	G 3/4	77 mm	218 mm	141 mm	70

K mm	Return force, min. N
180 mm	200 N
235 mm	200 N

Dimensions

Fig. 2



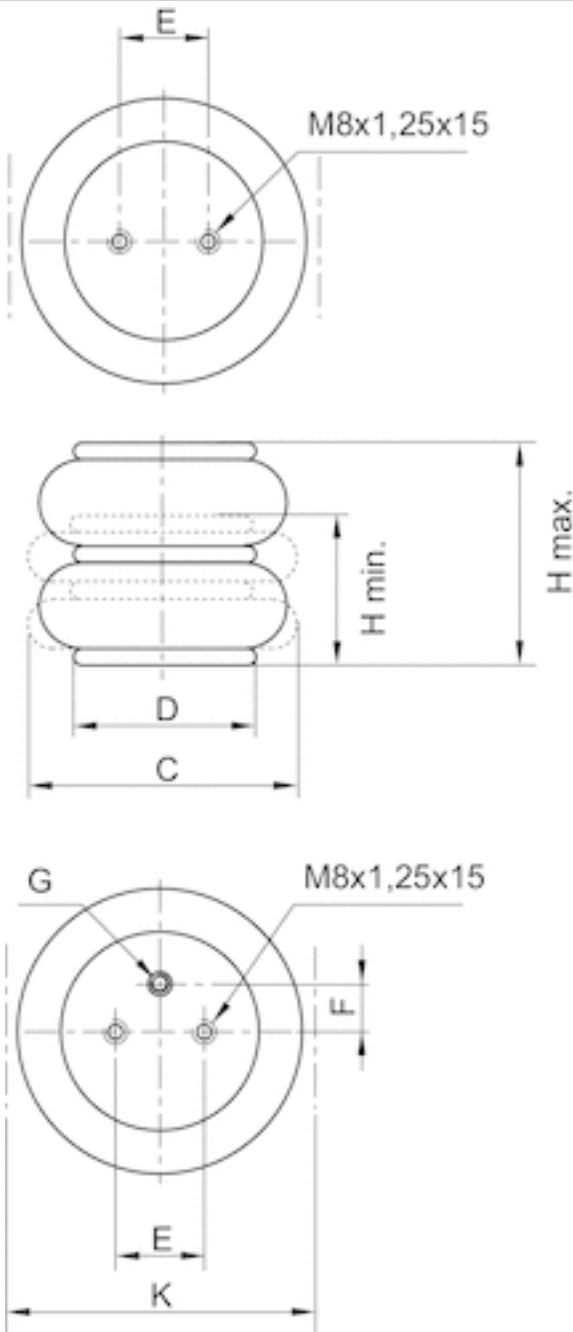
Dimensions

Part No.	Compressed air connection G	H min. mm	C mm	D mm	E ±0,5 [mm]
R412010223	G 3/4	77 mm	260 mm	161 mm	89
R412010224	G 3/4	77 mm	340 mm	228 mm	157.5

F ±0,5 [mm]	K mm	Return force, min. N
38.1	275 mm	250 N
73	355 mm	300 N

Dimensions

Fig. 3



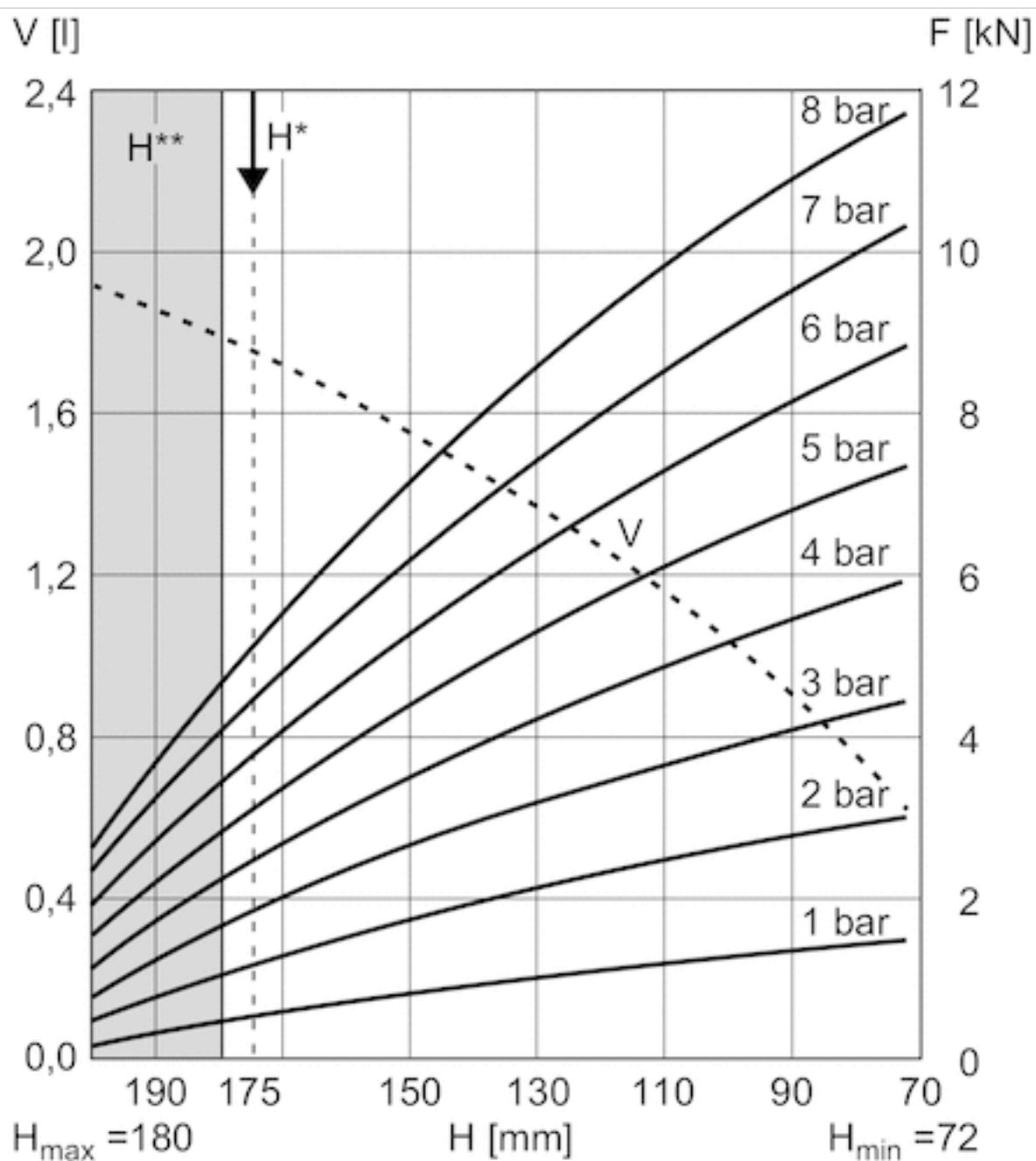
Dimensions

Part No.	Compressed air connection G	H min. mm	C mm	D mm	E $\pm 0,5$ [mm]
R412010225	G 3/4	77 mm	400 mm	287 mm	158.8

F $\pm 0,5$ [mm]	K mm	Return force, min. N
79.4	415 mm	400 N

Diagrams

Force-displacement diagram, R412010221



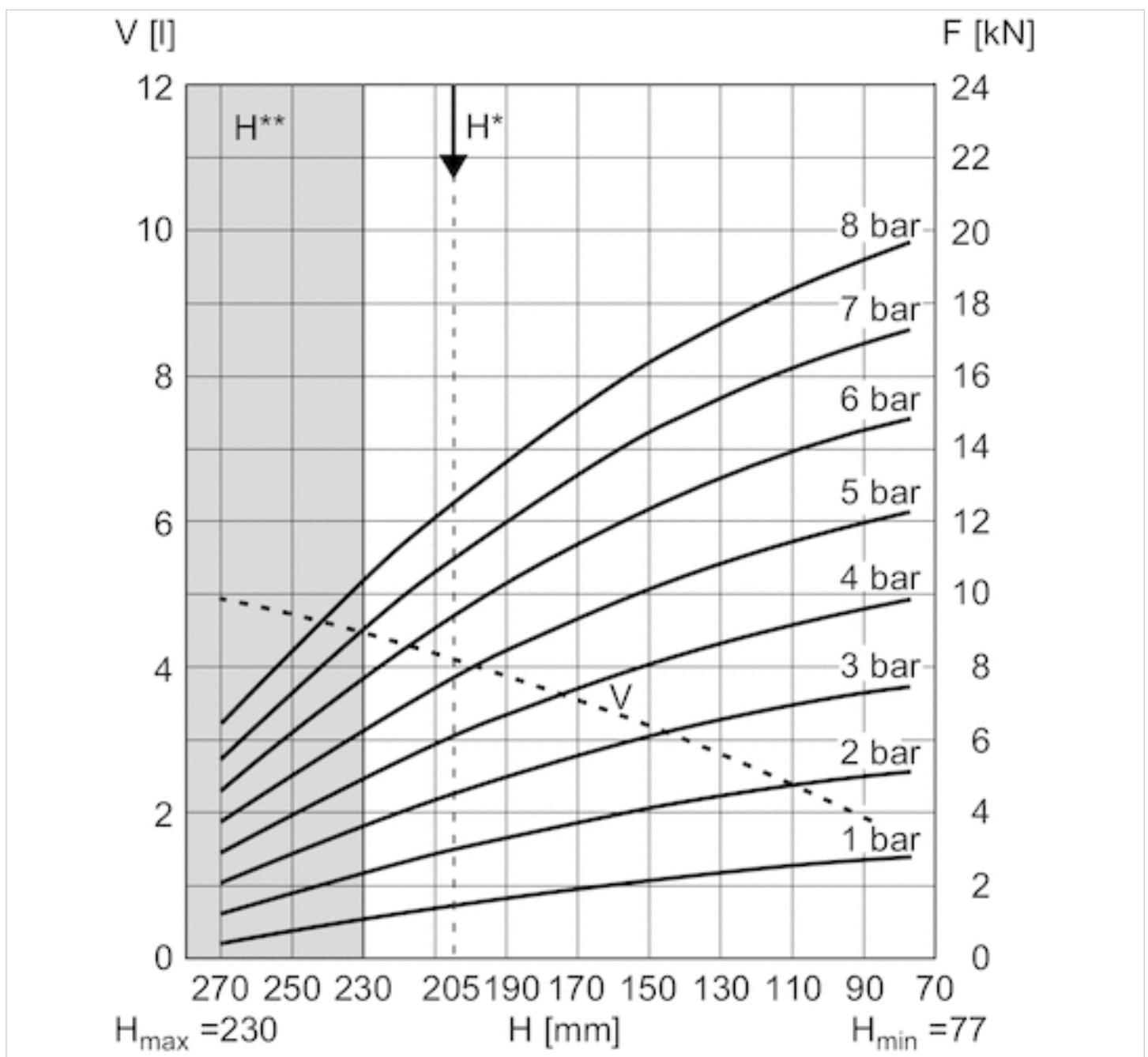
V = volume

H = height

H^* = recommended operating height for vibration isolation

H^{**} = use permitted only upon approval by AVENTICS

Force-displacement diagram, R412010222



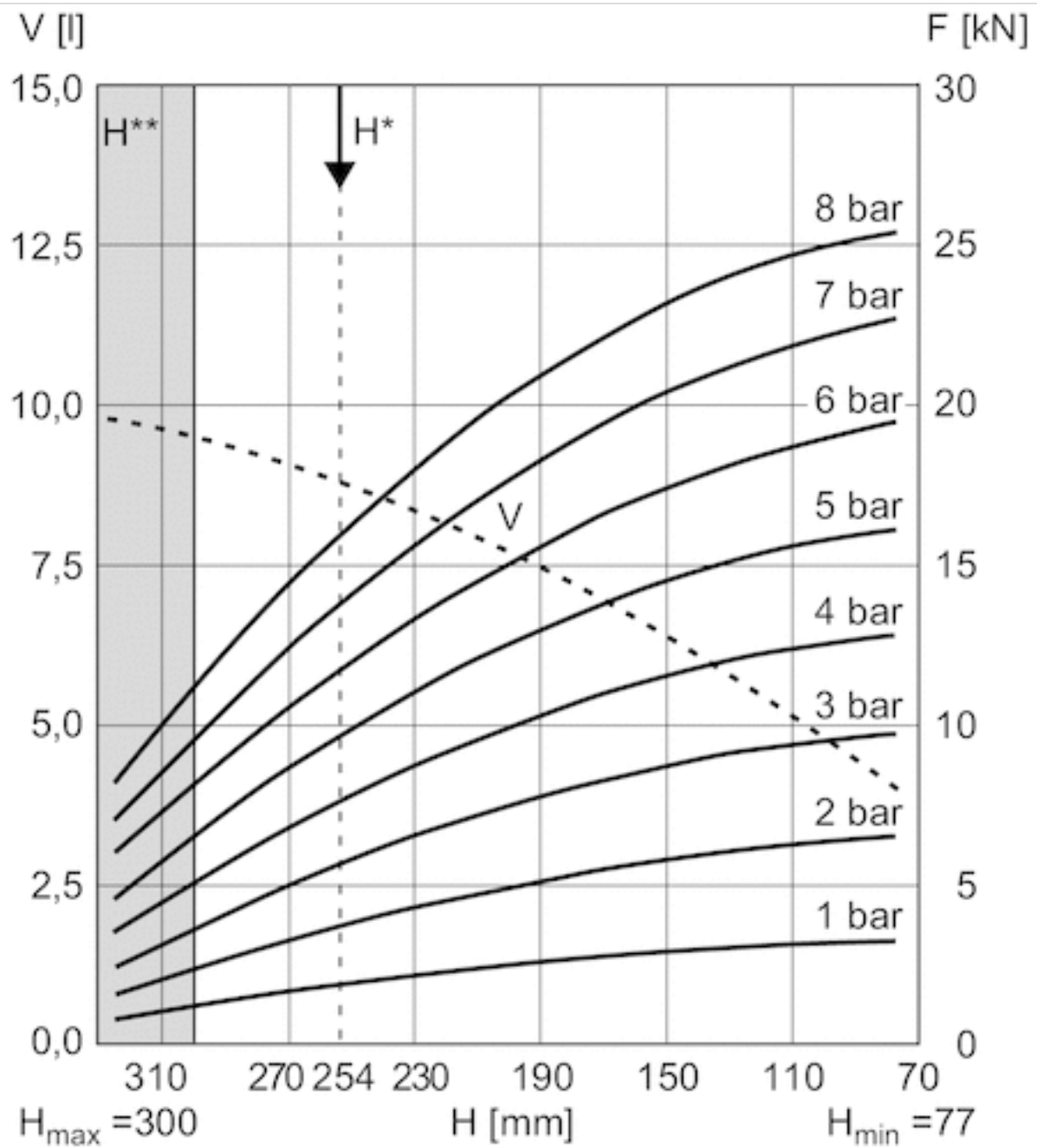
V = volume

H = height

H* = recommended operating height for vibration isolation

H** = use permitted only upon approval by AVENTICS

Force-displacement diagram, R412010223



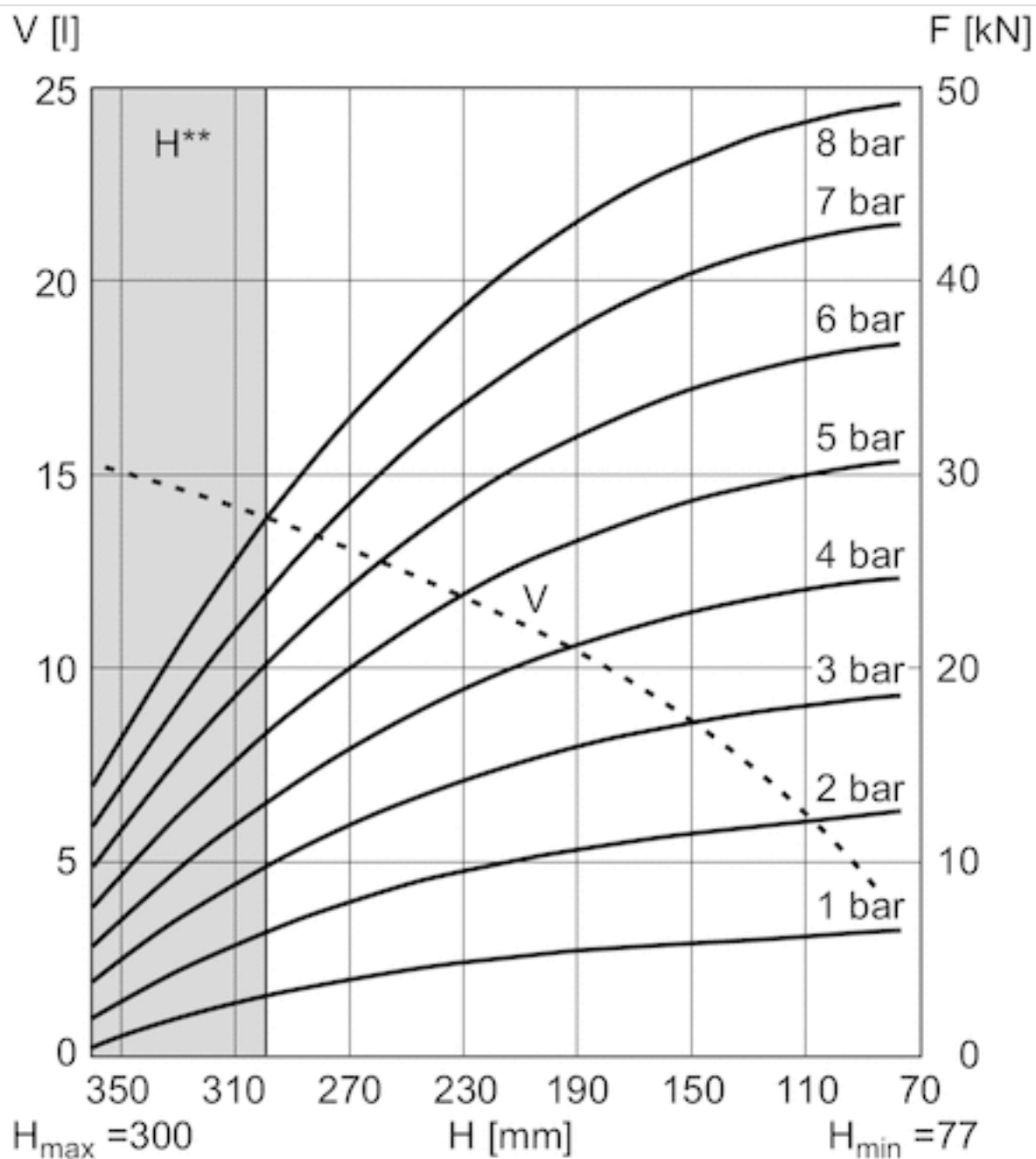
V = volume

H = height

H^* = recommended operating height for vibration isolation

H^{**} = use permitted only upon approval by AVENTICS

Force-displacement diagram, R412010224

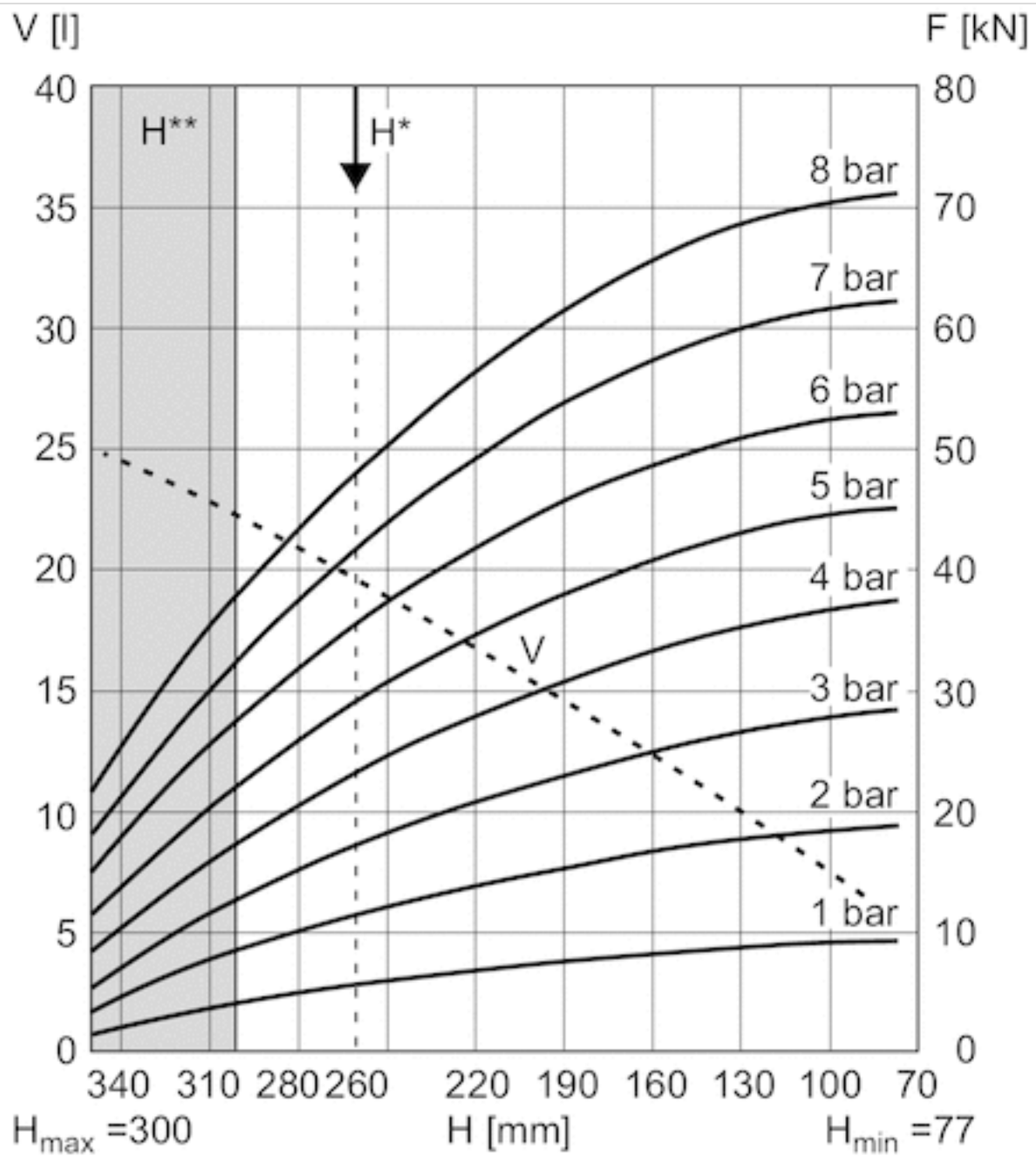


V = volume

H = height

H**= use permitted only upon approval by AVENTICS

Force-displacement diagram, R412010225



V = volume

H = height

H^* = recommended operating height for vibration isolation

H^{**} = use permitted only upon approval by AVENTICS

Efficient pneumatic solutions, our program: cylinders and drives, valves and valve systems, air supply management



Visit us: [Emerson.com/Aventics](https://www.emerson.com/Aventics)

Your local contact: [Emerson.com/contactus](https://www.emerson.com/contactus)



Emerson.com



Facebook.com/EmersonAutomationSolutions



LinkedIn.com/company/Emerson-Automation-Solutions



Twitter.com/EMR_Automation

An example configuration is depicted on the title page. The delivered product may thus vary from that in the illustration. Subject to change. This Document, as well as the data, specifications and other information set forth in it, are the exclusive property of AVENTICS GmbH. It may not be reproduced or given to third parties without its consent. Only use the AVENTICS products shown in industrial applications. Read the product documentation completely and carefully before using the product. Observe the applicable regulations and laws of the respective country. When integrating the product into applications, note the system manufacturer's specifications for safe use of the product. The data specified only serve to describe the product. No statements concerning a certain condition or suitability for a certain application can be derived from our information. The information given does not release the user from the obligation of own judgement and verification. It must be remembered that the products are subject to a natural process of wear and aging.

The Emerson logo is a trademark and service mark of Emerson Electric Co. Brand logotype are registered trademarks of one of the Emerson family of companies. All other marks are the property of their respective owners. © 2020 Emerson Electric Co. All rights reserved.
2020-12



CONSIDER IT SOLVED™