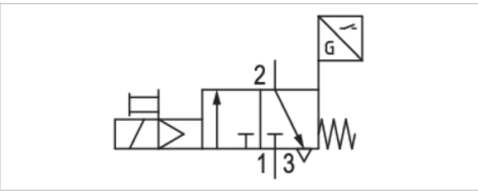


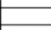
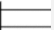
# 3/2-directional valve, electrically operated, Series AS5-SOV-...-POS

- With position inquiry, with integrated sensor
- Compressed air connection G 3/4 G 1
- Electrical connection: Plug, ISO 15217, form C



Type	Poppet valve, Can be assembled into blocks
Parts	3/2-directional valve, electrically operated
Nominal flow	12500 l/min
Nominal flow 1 ▶ 2	12500 l/min
Nominal flow 2 ▶ 3	3700 l/min
Working pressure min./max.	2,5 ... 10 bar
Medium	Compressed air Neutral gases
Medium temperature min./max.	-10 ... 50 °C
Ambient temperature min./max.	-10 ... 50 °C
Sealing principle	Soft sealing
Max. particle size	25 µm
Protection class acc. to DIN EN 61140 with plug	IP65
Weight	0,459 kg

## Technical data

Part No.		Compressed air connection input	Compressed air connection output	Exhaust
R412009382		G 3/4	G 3/4	G 1/2
R412009388		G 1	G 1	G 1/2

Part No.	Operational voltage	Power consumption	Electrical connection
		DC	Pilot valve
R412009382	24 V	2 W	Plug, ISO 15217, form C
R412009388	24 V	2 W	Plug, ISO 15217, form C

Part No.	Electrical connection	Cable length
	Sensor	Sensor
R412009382	without wire end ferrule, tin-plated	3 m
R412009388	without wire end ferrule, tin-plated	3 m

Nominal flow Qn with secondary pressure p2 = 6 bar at Δp = 1 bar

## Technical information

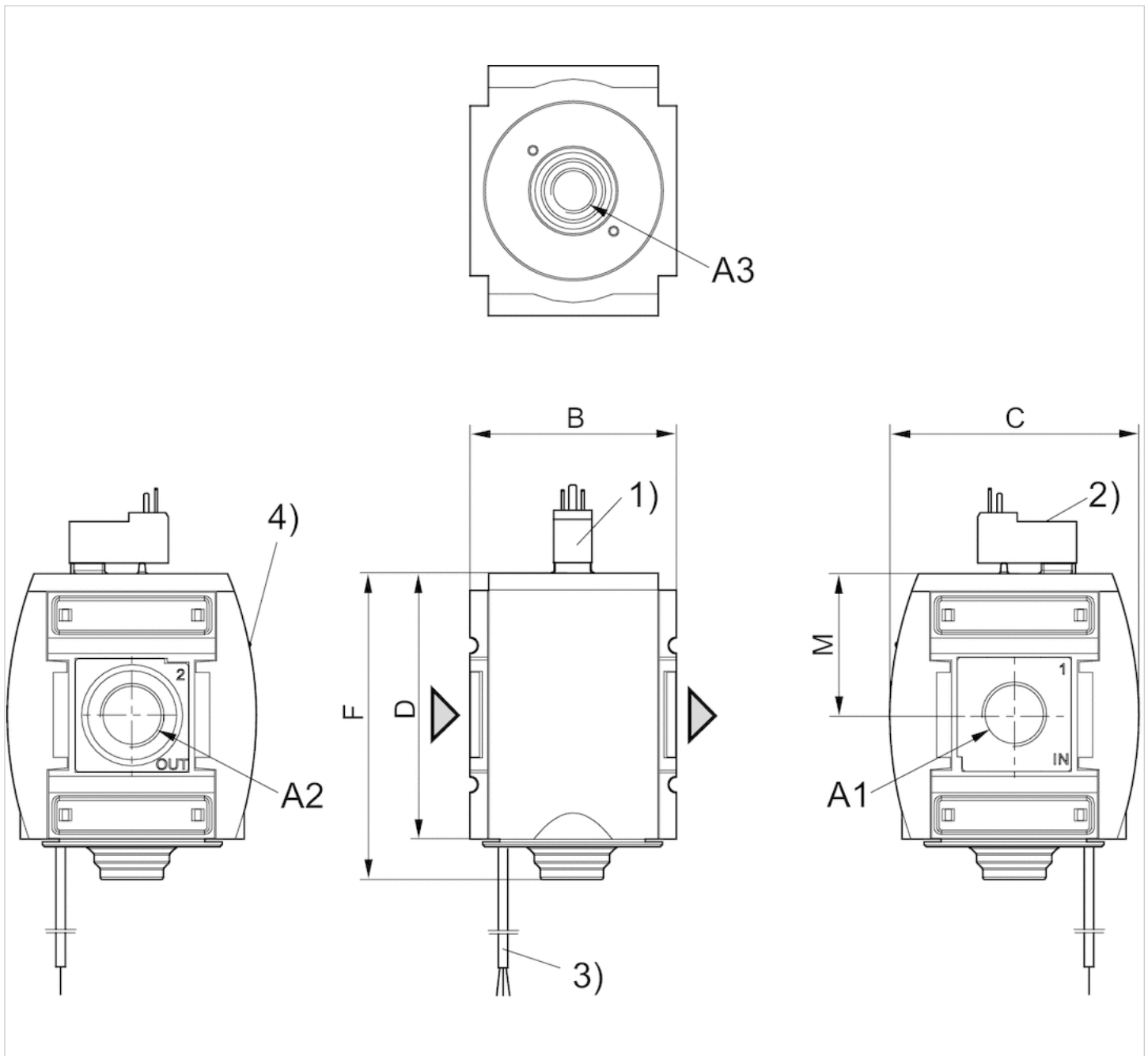
The pressure dew point must be at least 15 °C under ambient and medium temperature and may not exceed 3 °C .  
A change in the flow direction (from air supply on the left to air supply on the right) occurs by rotating installation by 180° about the vertical axis. Please see the operating instructions for further details.  
The sensor signal is visible on the front of the cover.  
Electronic sensor R412003658 included in scope of delivery (assembled).  
For sensor connection, see the selection table.  
An ST6 sensor (contactless) is used to detect the switching position in the non-actuated state (position: exhaust).

## Technical information

Material	
Housing	Polyamide
Front plate	Acrylonitrile butadiene styrene
Seals	Acrylonitrile butadiene rubber
Threaded bushing	Die cast zinc

## Dimensions

3/2-directional valve with pilot valve and port for electrical connector form C



A1 = input

A2 = output

A3 = ventilation port

1) Electr. connection: valve plug connector form C, ISO 15217

2) Manual override

3) For version with sensor: cable length 3 m PUR.

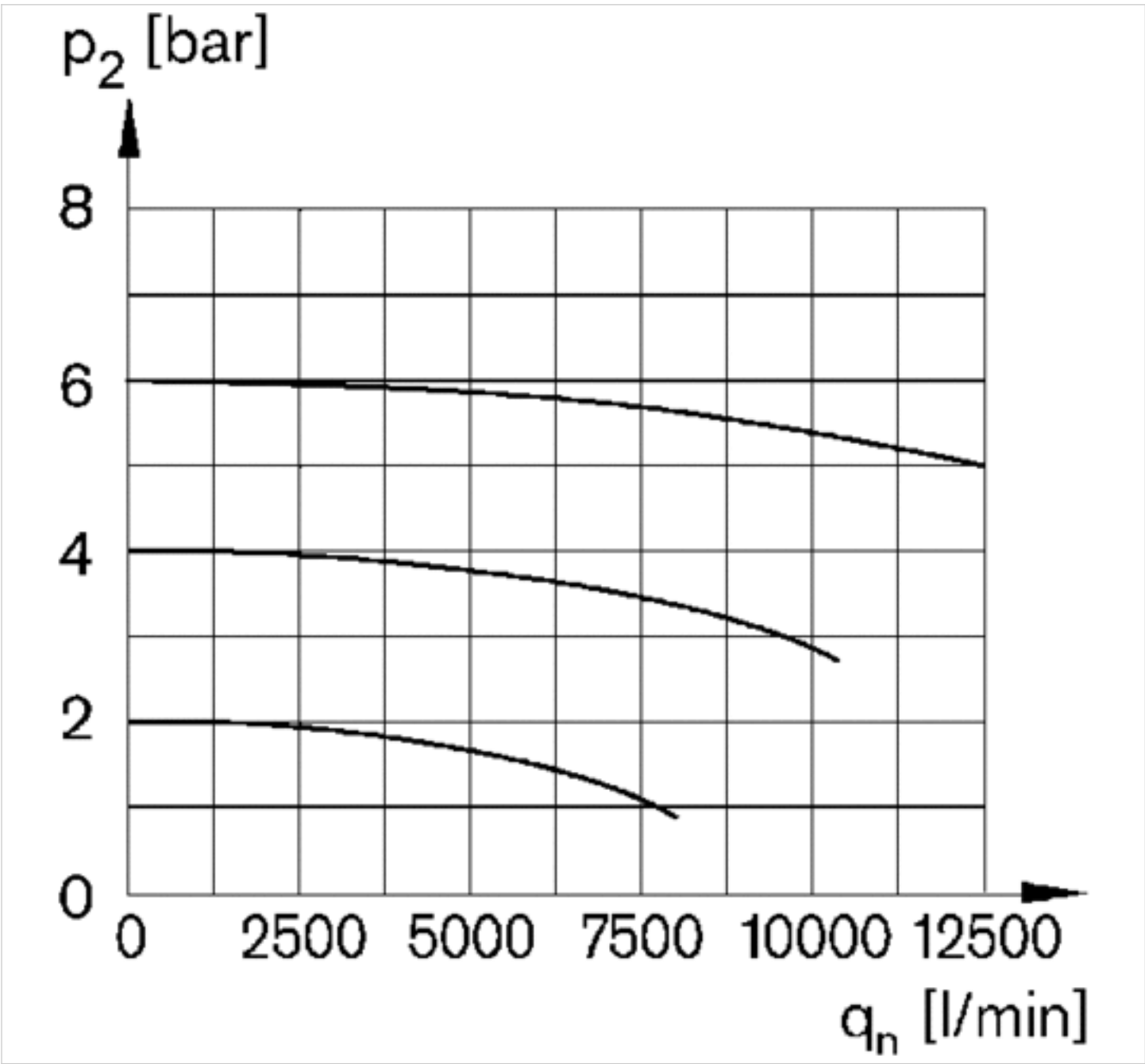
4) Optical switch status indicator

Dimensions in mm

A1	A2	A3	B	C	D	F	M
G 3/4	G 3/4	G 1/2	85	103	109	125	58
G 1	G 1	G 1/2	85	103	109	125	58

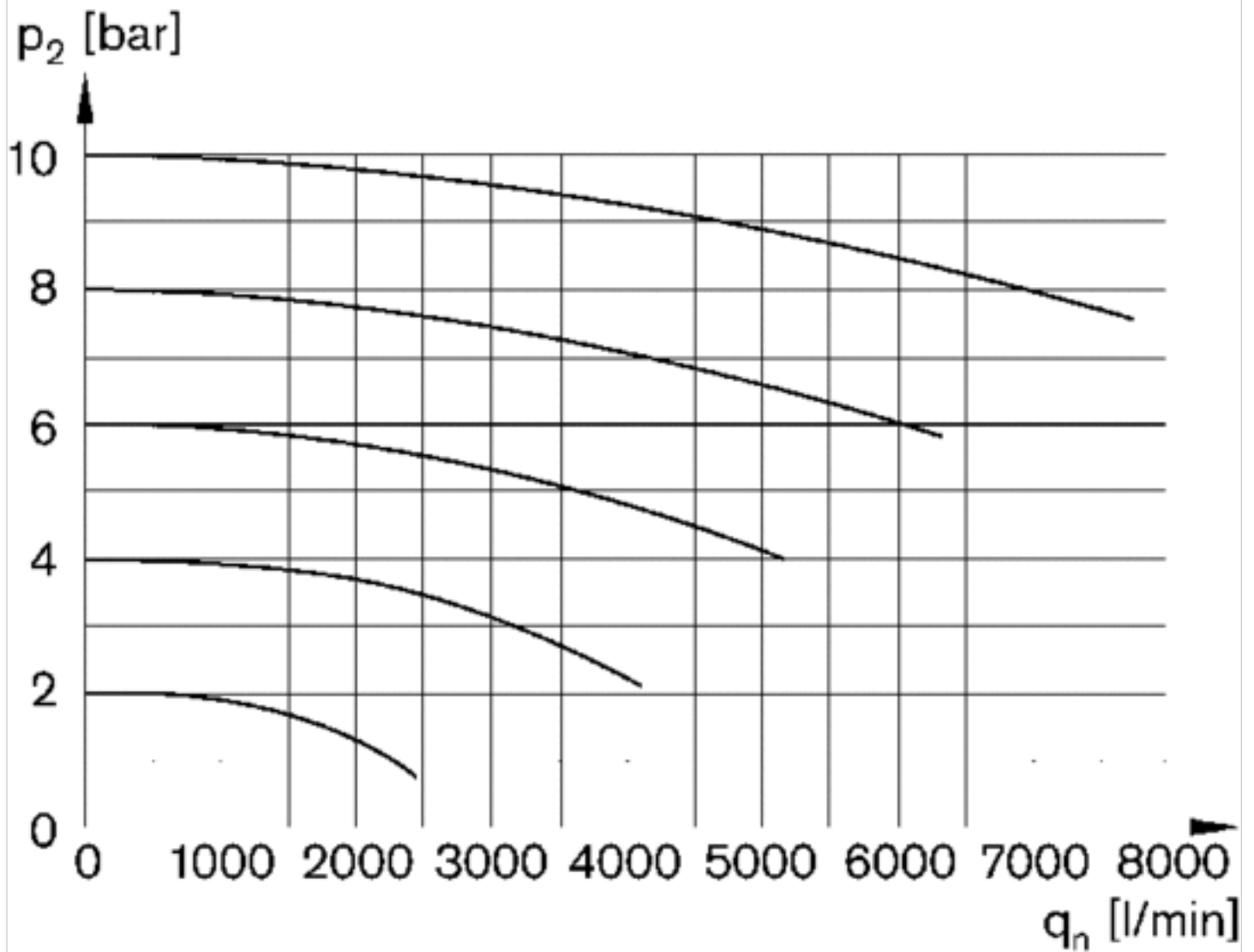
Diagrams

Flow rate characteristic, 1 2



$p_2$  = secondary pressure  
 $q_n$  = nominal flow

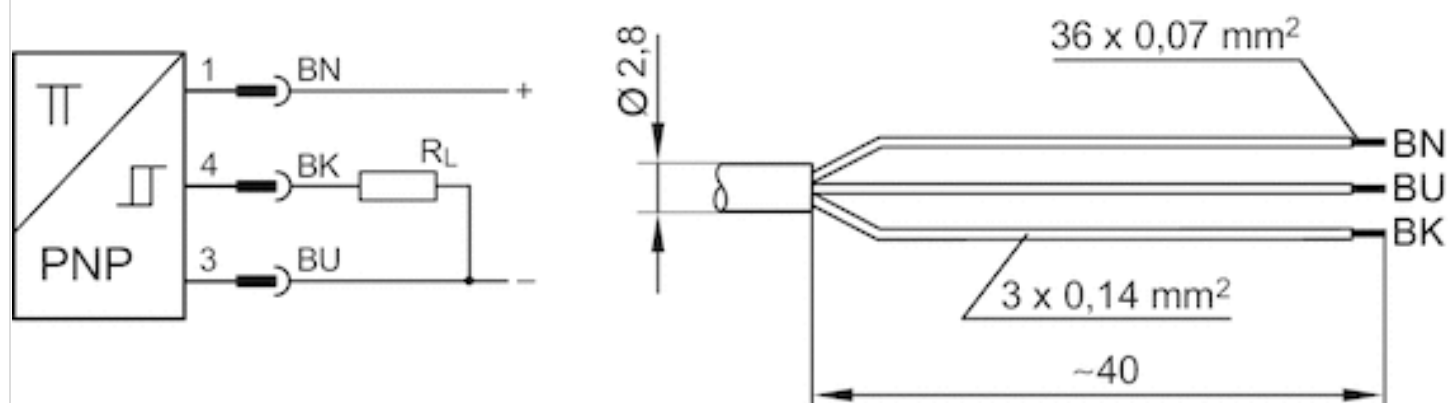
## Rear exhaust, 2 3



$p_2$  = secondary pressure  
 $q_n$  = nominal flow

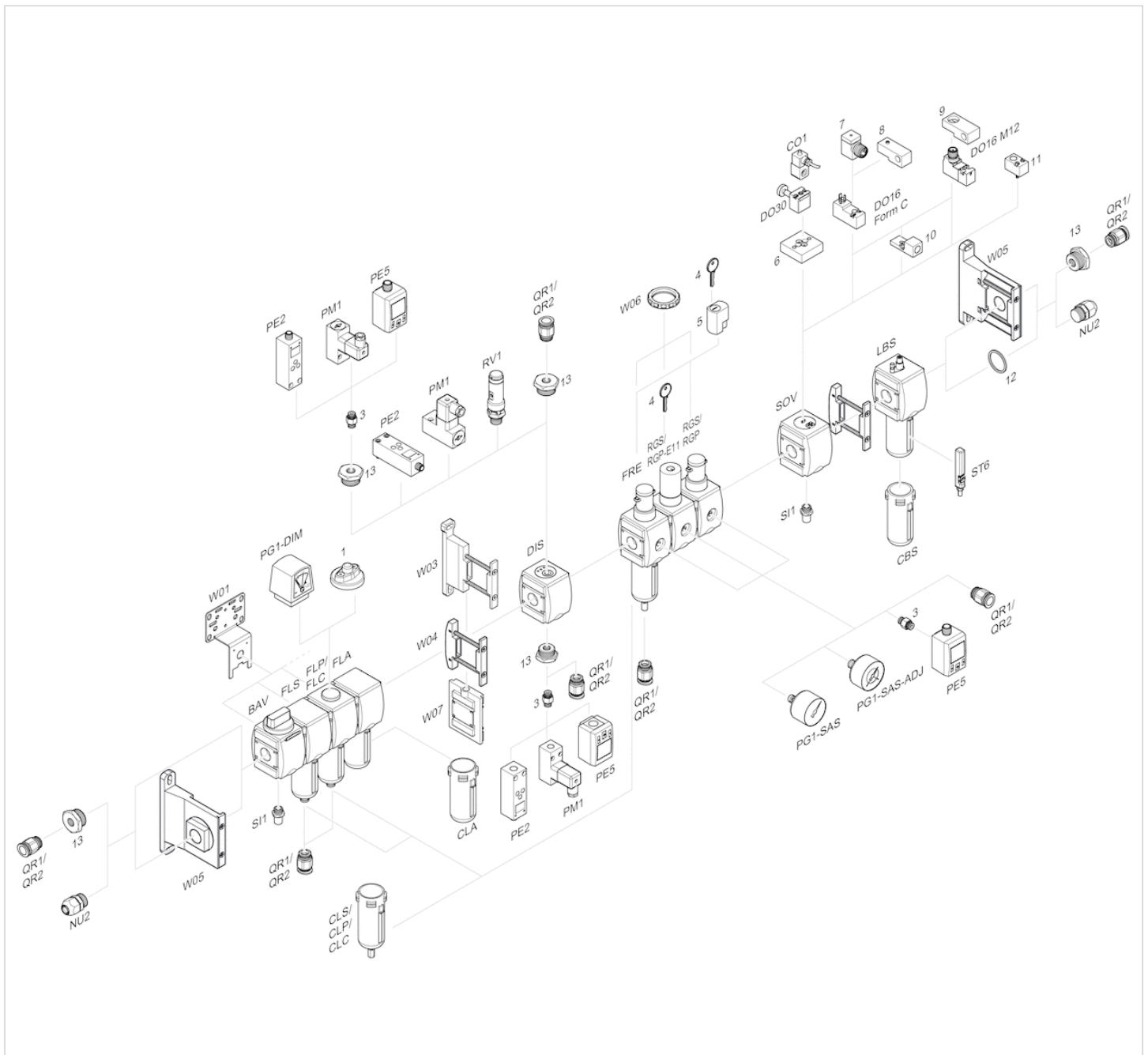
## Pin assignments

### Sensor pin assignment, tin-plated wire ends



BN = brown  
BK = black  
BU = blue

## Accessories overview



- 1 = contamination display
- 3 = Double nipple
- 4 = Key for E11 locking
- 5 = mortise lock
- 6 = Transition plate DO30
- 7 = Adapter, Series CON-VP
- 8 = Mounting aid DO16, form C
- 9 = Mounting aid DO16, M12
- 10 = Adapter for external pilot air
- 11 = Adapter pneumatic operation
- 12 = Sealing ring
- 13 = Reducing nipple

# Efficient pneumatic solutions, our program: cylinders and drives, valves and valve systems, air supply management



Visit us: [Emerson.com/Aventics](https://emerson.com/aventics)

Your local contact: [Emerson.com/contactus](https://emerson.com/contactus)



Emerson.com



Facebook.com/EmersonAutomationSolutions



LinkedIn.com/company/Emerson-Automation-Solutions



Twitter.com/EMR\_Automation

An example configuration is depicted on the title page. The delivered product may thus vary from that in the illustration. Subject to change. This Document, as well as the data, specifications and other information set forth in it, are the exclusive property of AVENTICS GmbH. It may not be reproduced or given to third parties without its consent. Only use the AVENTICS products shown in industrial applications. Read the product documentation completely and carefully before using the product. Observe the applicable regulations and laws of the respective country. When integrating the product into applications, note the system manufacturer's specifications for safe use of the product. The data specified only serve to describe the product. No statements concerning a certain condition or suitability for a certain application can be derived from our information. The information given does not release the user from the obligation of own judgement and verification. It must be remembered that the products are subject to a natural process of wear and aging.

The Emerson logo is a trademark and service mark of Emerson Electric Co. Brand logotype are registered trademarks of one of the Emerson family of companies. All other marks are the property of their respective owners. © 2020 Emerson Electric Co. All rights reserved.  
2020-12



## CONSIDER IT SOLVED™