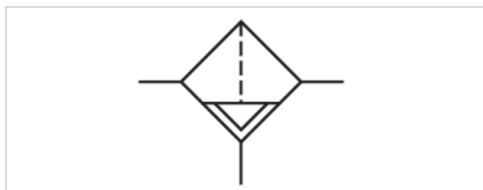


Microfilter, Series AS5-FLC

- G 3/4 G 1
- filter porosity 0,01 µm
- contamination display integrated
- suitable for ATEX



Type	Microfilter, Can be assembled into blocks
Parts	Microfilter
Mounting orientation	vertical
Certificates	suitable for ATEX
Working pressure min./max.	See table below
Ambient temperature min./max.	-10 ... 50 °C
Medium temperature min./max.	-10 ... 50 °C
Medium	Compressed air Neutral gases
Filter reservoir volume	87 cm ³
Filter element	exchangeable
filter porosity	0,01 µm
Condensate drain	See table below
contamination display	integrated
Weight	See table below

Technical data

Part No.	Port	Flow Qn	Working pressure min./max.
R412009054	G 3/4	1600 l/min	1,5 ... 16 bar
R412009060	G 3/4	1600 l/min	1,5 ... 16 bar
R412009055	G 3/4	1600 l/min	1,5 ... 16 bar
R412009056	G 3/4	1600 l/min	1,5 ... 16 bar
R412009061	G 3/4	1600 l/min	1,5 ... 16 bar
R412009062	G 3/4	1600 l/min	1,5 ... 16 bar
R412009063	G 1	1600 l/min	1,5 ... 16 bar
R412009069	G 1	1600 l/min	0 ... 16 bar
R412009064	G 1	1600 l/min	1,5 ... 16 bar
R412009065	G 1	1600 l/min	1,5 ... 16 bar
R412009070	G 1	1600 l/min	1,5 ... 16 bar
R412009071	G 1	1600 l/min	1,5 ... 16 bar

Part No.	Condensate drain
R412009054	semi-automatic, open without pressure
R412009060	semi-automatic, open without pressure
R412009055	fully automatic, open without pressure
R412009056	fully automatic, closed without pressure
R412009061	fully automatic, open without pressure
R412009062	fully automatic, closed without pressure

Part No.	Condensate drain
R412009063	semi-automatic, open without pressure
R412009069	semi-automatic, open without pressure
R412009064	fully automatic, open without pressure
R412009065	fully automatic, closed without pressure
R412009070	fully automatic, open without pressure
R412009071	fully automatic, closed without pressure

Part No.	Version	Weight
R412009054	reservoir, polycarbonate, with PA protective guard	0,361 kg
R412009060	-	1,55 kg
R412009055	reservoir, polycarbonate, with PA protective guard	0,41 kg
R412009056	reservoir, polycarbonate, with PA protective guard	0,41 kg
R412009061	-	1,58 kg
R412009062	-	1,57 kg
R412009063	reservoir, polycarbonate, with PA protective guard	0,361 kg
R412009069	-	1,48 kg
R412009064	reservoir, polycarbonate, with PA protective guard	0,41 kg
R412009065	reservoir, polycarbonate, with PA protective guard	0,762 kg
R412009070	-	1,5 kg
R412009071	-	1,5 kg

Nominal flow Q_n with secondary pressure p₂ = 6 bar at Δp = 0.1 bar

Suitable for use in Ex zones 1, 2, 21, 22.

Technical information

The pressure dew point must be at least 15 °C under ambient and medium temperature and may not exceed 3 °C .

Note: Polycarbonate reservoirs are susceptible to solvents, supplementary information can be found at "Customer information".

Suitable for use in Ex zones 1, 2, 21, 22.

A change in the flow direction (from air supply on the left to air supply on the right) occurs by rotating installation by 180° about the vertical axis. Please see the operating instructions for further details.

Recommended pre-filtering 0,3 μm

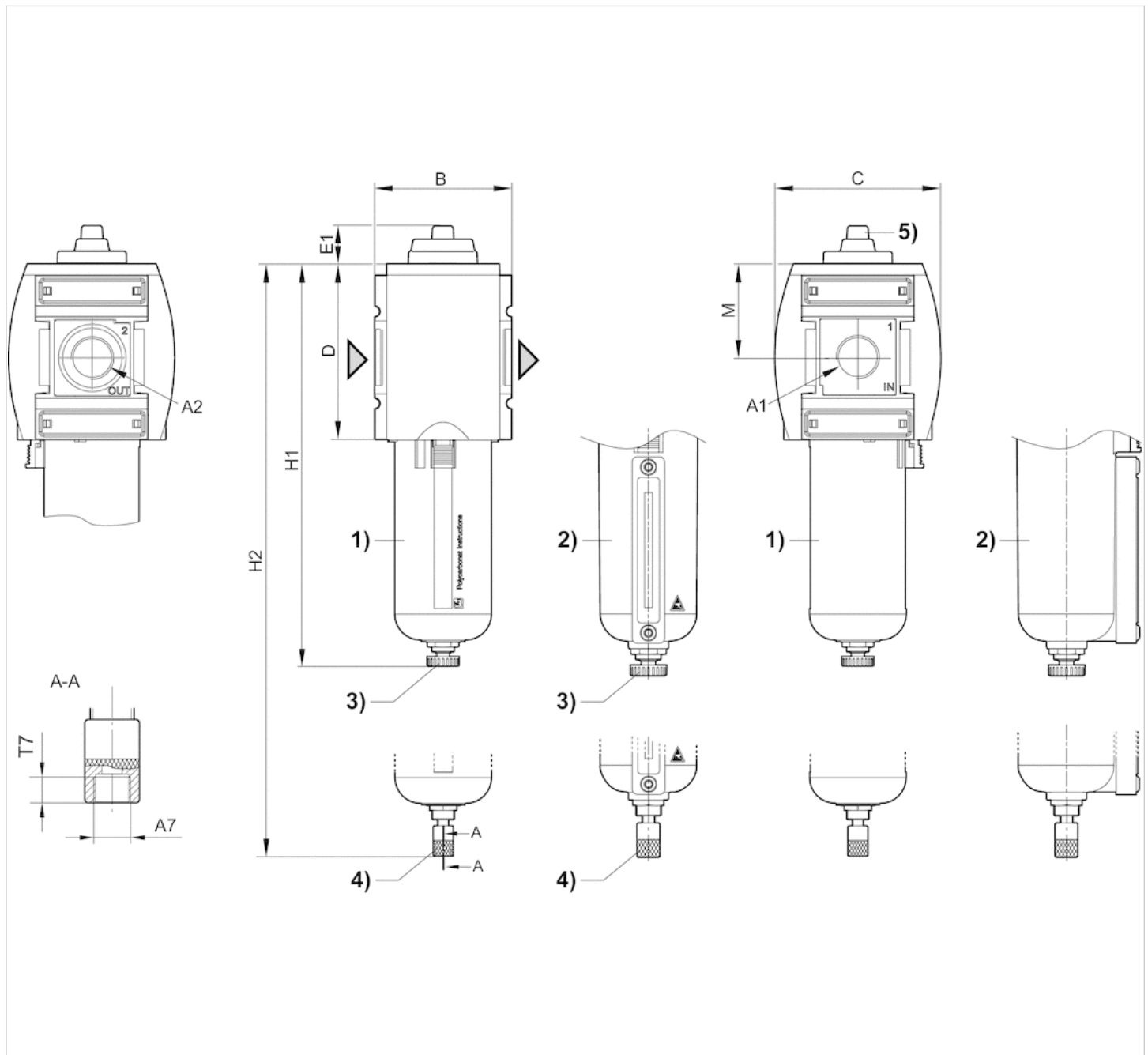
Max. achievable compressed air class acc. to ISO 8573-1:2010 1 : - : 2

Technical information

Material	
Housing	Polyamide
Front plate	Acrylonitrile butadiene styrene
Seals	Acrylonitrile butadiene rubber
Threaded bushing	Die cast zinc
Reservoir	Polycarbonate Die cast zinc
Protective guard	Polyamide
Filter insert	Borosilicate glass fiber

Dimensions

Dimensions



A1 = input

A2 = output

A7 = condensate drain

1) Plastic reservoir and protective guard with window

2) Metal reservoir with level indicator

3) Semi-automatic condensate drain

4) Fully automatic condensate drain

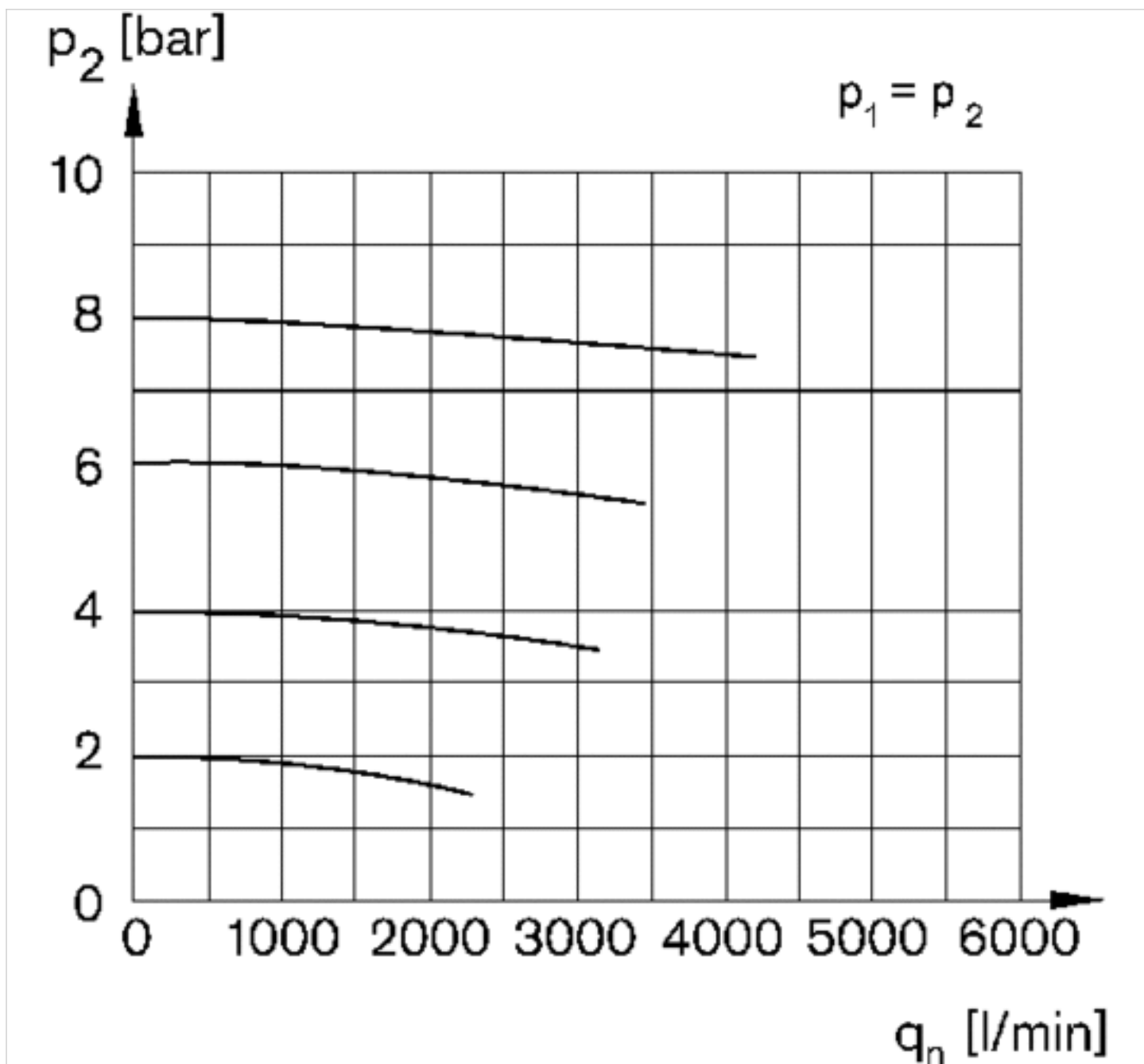
5) contamination display

Dimensions in mm

A1	A2	A7	B	C	D	E1	H1	H2	M	T7
G 3/4	G 3/4	G 1/8	85	103	109	23.7	250	--	58	8.5
G 3/4	G 3/4	--	85	103	109	23.7	--	266	58	--
G 1	G 1	G 1/8	85	103	109	23.7	250	--	58	8.5
G 1	G 1	--	85	103	109	23.7	--	266	58	--

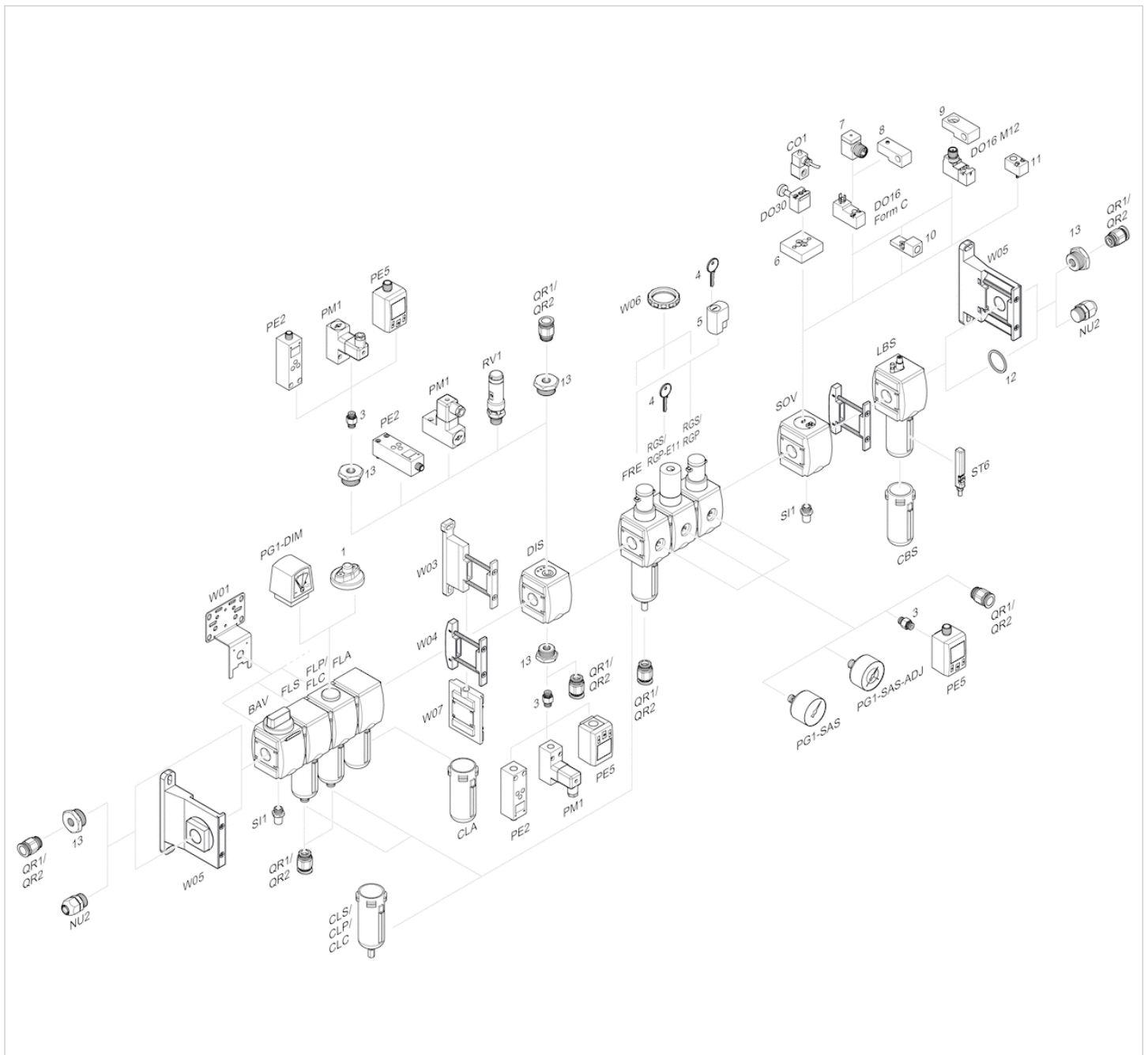
Diagrams

Flow rate characteristic



p_1 = Working pressure
 p_2 = Secondary pressure
 q_n = Nominal flow

Accessories overview



- 1 = contamination display
- 3 = Double nipple
- 4 = Key for E11 locking
- 5 = mortise lock
- 6 = Transition plate DO30
- 7 = Adapter, Series CON-VP
- 8 = Mounting aid DO16, form C
- 9 = Mounting aid DO16, M12
- 10 = Adapter for external pilot air
- 11 = Adapter pneumatic operation
- 12 = Sealing ring
- 13 = Reducing nipple

Efficient pneumatic solutions, our program: cylinders and drives, valves and valve systems, air supply management



Visit us: [Emerson.com/Aventics](https://www.emerson.com/Aventics)

Your local contact: [Emerson.com/contactus](https://www.emerson.com/contactus)



Emerson.com



Facebook.com/EmersonAutomationSolutions



LinkedIn.com/company/Emerson-Automation-Solutions



Twitter.com/EMR_Automation

An example configuration is depicted on the title page. The delivered product may thus vary from that in the illustration. Subject to change. This Document, as well as the data, specifications and other information set forth in it, are the exclusive property of AVENTICS GmbH. It may not be reproduced or given to third parties without its consent. Only use the AVENTICS products shown in industrial applications. Read the product documentation completely and carefully before using the product. Observe the applicable regulations and laws of the respective country. When integrating the product into applications, note the system manufacturer's specifications for safe use of the product. The data specified only serve to describe the product. No statements concerning a certain condition or suitability for a certain application can be derived from our information. The information given does not release the user from the obligation of own judgement and verification. It must be remembered that the products are subject to a natural process of wear and aging.

The Emerson logo is a trademark and service mark of Emerson Electric Co. Brand logotype are registered trademarks of one of the Emerson family of companies. All other marks are the property of their respective owners. © 2020 Emerson Electric Co. All rights reserved.
2020-12



CONSIDER IT SOLVED™