




# Pressure regulator, Series MU1-RGS

- G 1/2
- Qn = 5000 l/min
- Standard pressure regulator
- Activation Mechanical
- suitable for ATEX



Parts	Pressure regulator
Mounting orientation	Any
Certificates	suitable for ATEX
Working pressure min./max.	0,5 ... 30 bar
Ambient temperature min./max.	-10 ... 80 °C
Medium temperature min./max.	-10 ... 80 °C
Medium	Compressed air Neutral gases
Regulator type	Diaphragm-type pressure regulator
Regulator function	with relieving air exhaust
Adjustment range min./max.	See table below
Pressure supply	single
Activation	Mechanical
Weight	1,2 kg

## Technical data

Part No.		Port	Flow	Adjustment range min./max.	Pressure gauge
			Qn		
R412004371		G 1/2	5000 l/min	0,5 ... 16 bar	with pressure gauge
R412007578		G 1/2	5000 l/min	0,5 ... 16 bar	-
9153320160		G 1/2	5000 l/min	0,5 ... 10 bar	-

Nominal flow Qn with secondary pressure p2 = 6 bar at Δp = 1 bar

Suitable for use in Ex zones 1, 2, 21, 22.

## Technical information

The pressure dew point must be at least 15 °C under ambient and medium temperature and may not exceed 3 °C .

Mounting: panel installation or mounting bracket R412004872

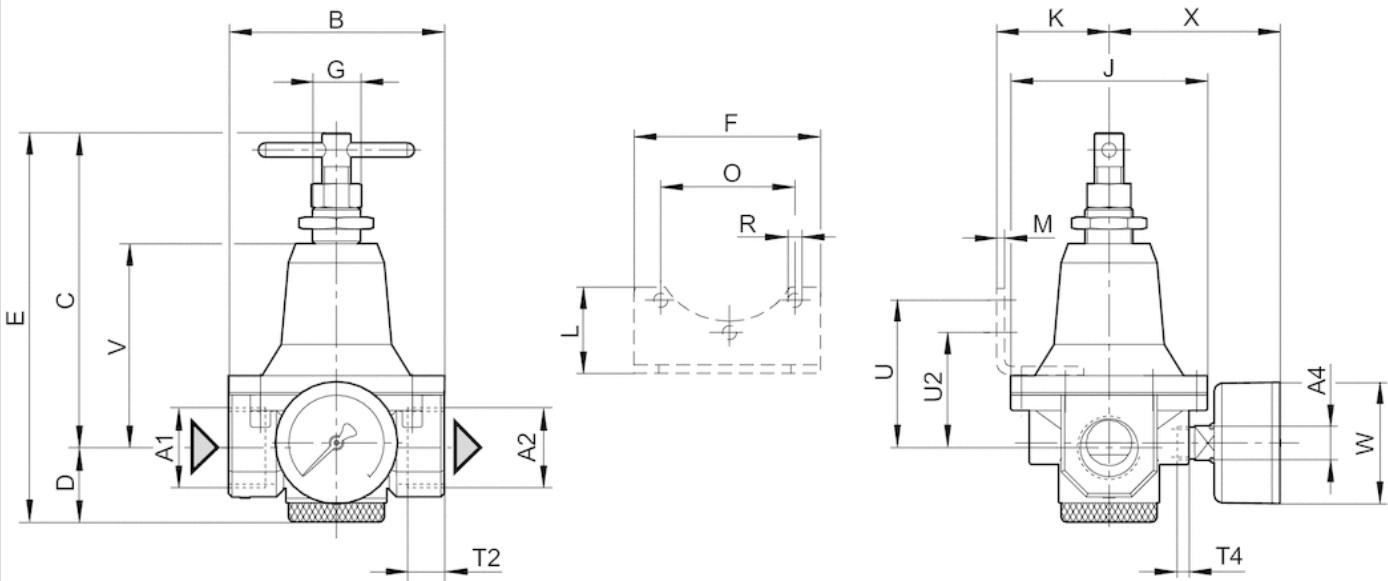
Suitable for use in Ex zones 1, 2, 21, 22.

## Technical information

Material	
Housing	Die cast zinc
Seals	Acrylonitrile butadiene rubber

Dimensions

Dimensions

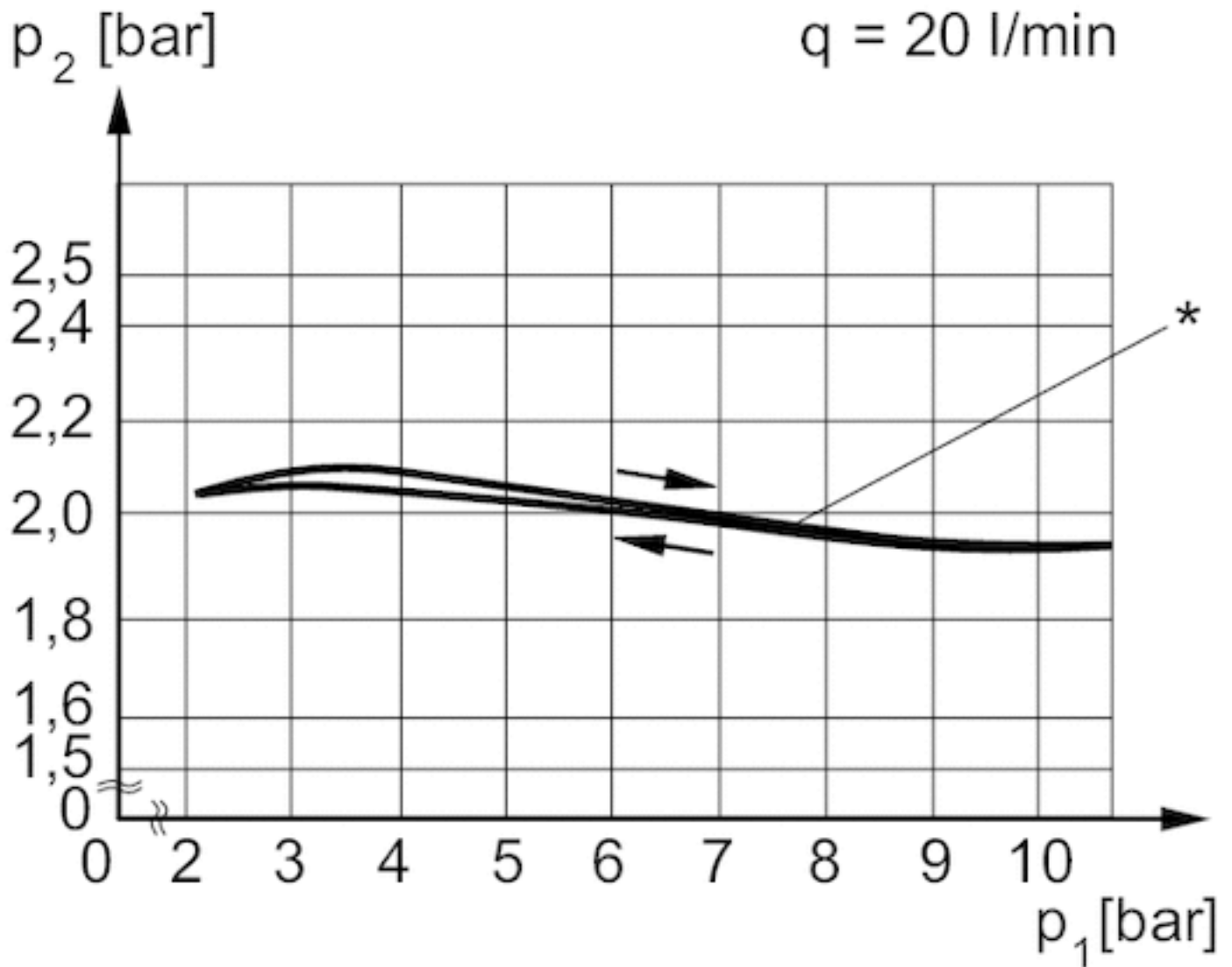


Dimensions

A1	A2	A4	B	C	D	E	F	G	J	K	L	M	O	R	U	U2	T2	T4	V	W	X
G 1/2	G 1/2	G 1/4	82	129	31	162	124	M20x1,5	82	47	38	3	53.6	6	58	45	14	7	83	63	72

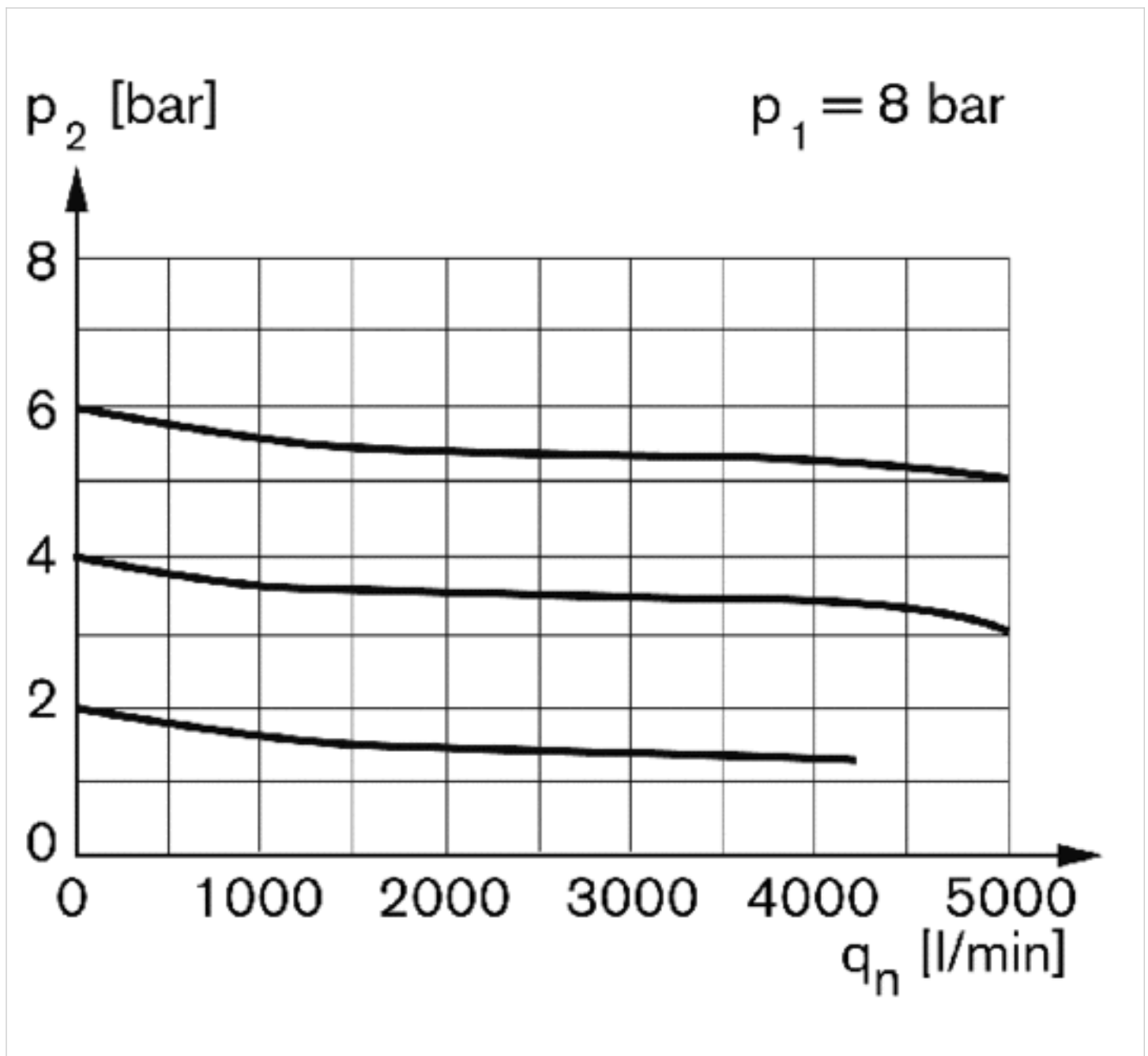
## Diagrams

## Pressure characteristics curve



$p_1$  = working pressure  
 $p_2$  = secondary pressure  
 $q$  = flow rate  
\* starting point

## Flow rate characteristic (secondary range p2: 0.5 - 10 bar)



$p_1$  = Working pressure  
 $p_2$  = Secondary pressure  
 $q_n$  = Nominal flow

# Efficient pneumatic solutions, our program: cylinders and drives, valves and valve systems, air supply management



Visit us: [Emerson.com/Aventics](https://emerson.com/aventics)

Your local contact: [Emerson.com/contactus](https://emerson.com/contactus)



Emerson.com



Facebook.com/EmersonAutomationSolutions



LinkedIn.com/company/Emerson-Automation-Solutions



Twitter.com/EMR\_Automation

An example configuration is depicted on the title page. The delivered product may thus vary from that in the illustration. Subject to change. This Document, as well as the data, specifications and other information set forth in it, are the exclusive property of AVENTICS GmbH. It may not be reproduced or given to third parties without its consent. Only use the AVENTICS products shown in industrial applications. Read the product documentation completely and carefully before using the product. Observe the applicable regulations and laws of the respective country. When integrating the product into applications, note the system manufacturer's specifications for safe use of the product. The data specified only serve to describe the product. No statements concerning a certain condition or suitability for a certain application can be derived from our information. The information given does not release the user from the obligation of own judgement and verification. It must be remembered that the products are subject to a natural process of wear and aging.

The Emerson logo is a trademark and service mark of Emerson Electric Co. Brand logotype are registered trademarks of one of the Emerson family of companies. All other marks are the property of their respective owners. © 2020 Emerson Electric Co. All rights reserved.  
2020-12



## CONSIDER IT SOLVED™