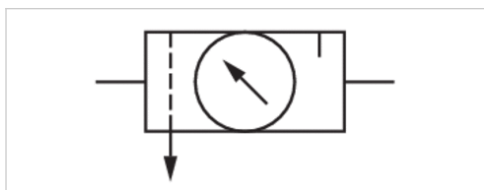


Air preparation unit, 2-part, Series AS3-ACD

- G 3/8 G 1/2
- filter porosity 5 µm
- lockable
- for padlocks
- with pressure gauge
- suitable for ATEX



Type	2-part, Can be assembled into blocks
Parts	Filter pressure regulator, Lubricator
Mounting orientation	vertical
Certificates	suitable for ATEX
Working pressure min./max.	See table below
Ambient temperature min./max.	-10 ... 50 °C
Medium temperature min./max.	-10 ... 50 °C
Medium	Compressed air Neutral gases
Nominal flow Qn	3500 l/min
Regulator type	Diaphragm-type pressure regulator
Regulator function	with relieving air exhaust
Adjustment range min./max.	0,5 ... 8 bar
Pressure supply	single
Filter reservoir volume	49 cm³
Filter element	exchangeable
Lubricator reservoir volume	80 cm³
Type of filling	Semi-automatic oil filling during operation Manual oil filling
Weight	See table below

Technical data

Part No.	Port	filter porosity	Flow	Working pressure min./max.
			Qn	
R412007298	G 3/8	5 µm	3500 l/min	1,5 ... 16 bar
R412007299	G 3/8	5 µm	3500 l/min	1,5 ... 16 bar
R412007307	G 1/2	5 µm	3500 l/min	1,5 ... 16 bar
R412007308	G 1/2	5 µm	3500 l/min	1,5 ... 16 bar
R412007309	G 1/2	5 µm	3500 l/min	1,5 ... 16 bar
R412007313	G 1/2	5 µm	3500 l/min	1,5 ... 16 bar
R412007314	G 1/2	5 µm	3500 l/min	1,6 ... 16 bar
R412007315	G 1/2	5 µm	3500 l/min	1,5 ... 16 bar

Part No.	Condensate drain	Pressure gauge	Reservoir
R412007298	semi-automatic, open without pressure	with pressure gauge	Polycarbonate
R412007299	fully automatic, open without pressure	with pressure gauge	Polycarbonate
R412007307	semi-automatic, open without pressure	with pressure gauge	Polycarbonate
R412007308	fully automatic, open without pressure	with pressure gauge	Polycarbonate
R412007309	fully automatic, closed without pressure	with pressure gauge	Polycarbonate

Part No.	Condensate drain	Pressure gauge	Reservoir
R412007313	semi-automatic, open without pressure	with pressure gauge	Die cast zinc
R412007314	fully automatic, open without pressure	with pressure gauge	Die cast zinc
R412007315	fully automatic, closed without pressure	with pressure gauge	Die cast zinc

Part No.	Weight
R412007298	1,02 kg
R412007299	1,07 kg
R412007307	1,02 kg
R412007308	1,07 kg
R412007309	1,07 kg
R412007313	1,83 kg
R412007314	1,87 kg
R412007315	1,75 kg

Nominal flow Qn with secondary pressure p2 = 6 bar at $\Delta p = 1$ bar

Suitable for use in Ex zones 1, 2, 21, 22.

Technical information

The pressure dew point must be at least 15 °C under ambient and medium temperature and may not exceed 3 °C .

Note: Polycarbonate reservoirs are susceptible to solvents, supplementary information can be found at "Customer information".

Suitable for use in Ex zones 1, 2, 21, 22.

A change in the flow direction (from air supply on the left to air supply on the right) occurs by rotating installation by 180° about the vertical axis. Please see the operating instructions for further details.

Also suitable for separation of fluid oil or water due to the design.

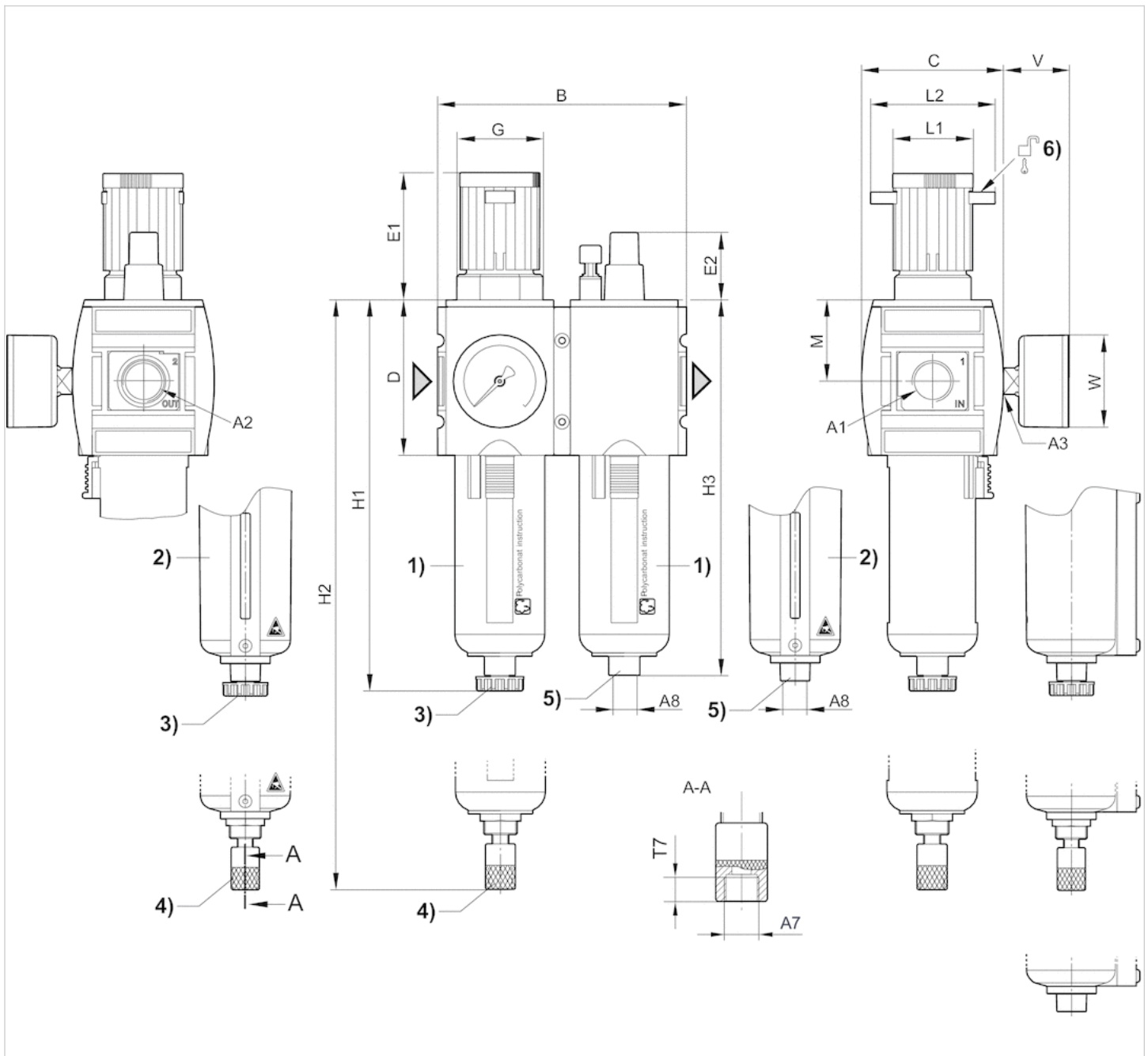
Max. achievable compressed air class acc. to ISO 8573-1:2010 6 : 7 : -

Technical information

Material	
Housing	Polyamide
Front plate	Acrylonitrile butadiene styrene
Seals	Acrylonitrile butadiene rubber
Threaded bushing	Die cast zinc
Reservoir	Polycarbonate Die cast zinc
Protective guard	Polyamide
Filter insert	Polyethylene

Dimensions

Dimensions



A1 = input

A2 = output

A3 = pressure gauge connection

A7 = condensate drain

1) Plastic reservoir and protective guard with window

2) Metal reservoir with level indicator

3) Semi-automatic condensate drain

4) Fully automatic condensate drain

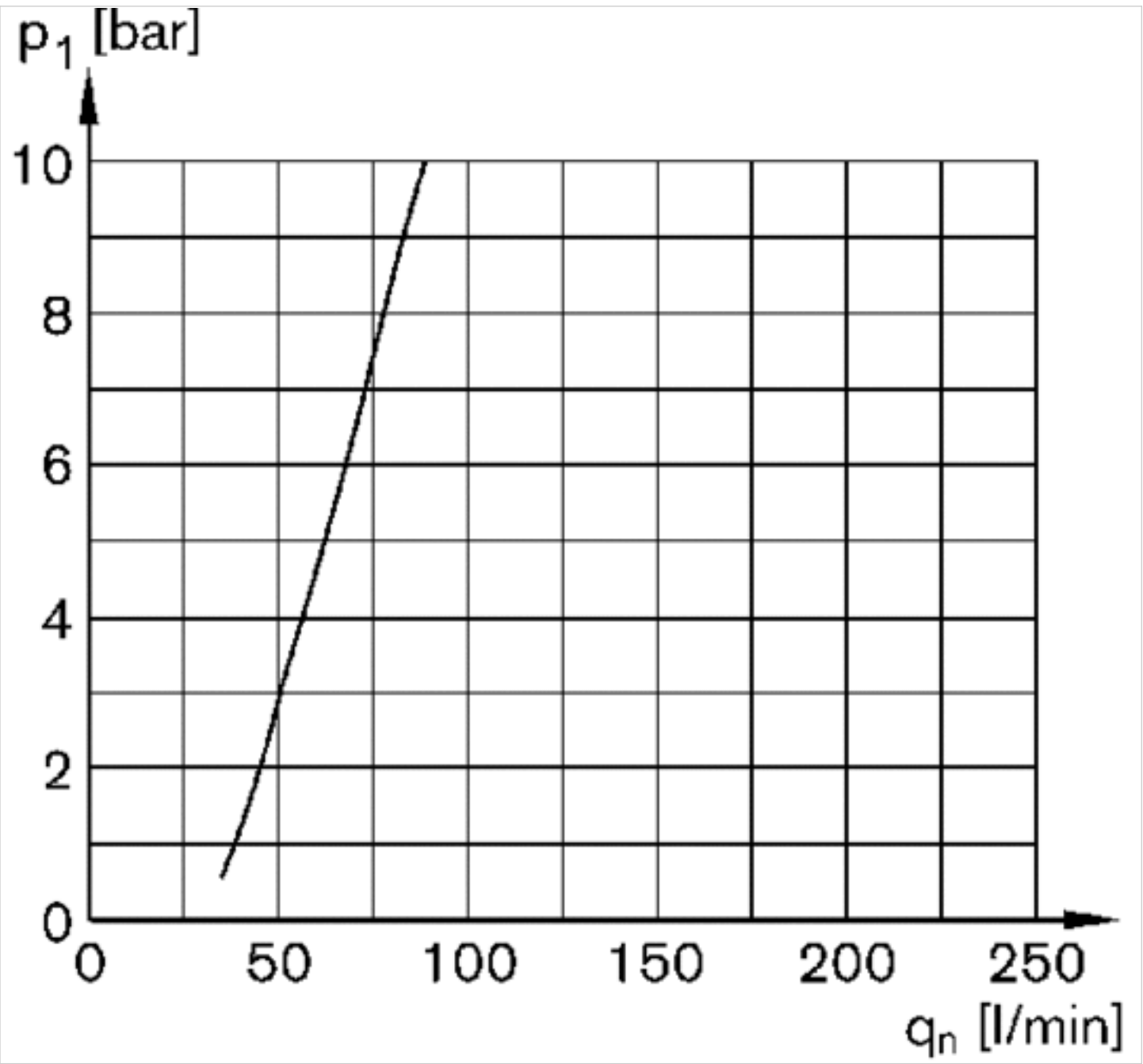
5) Port for semi-automatic oil filling 6) Mounting option for padlocks, max. shackle Ø 8

Dimensions in mm

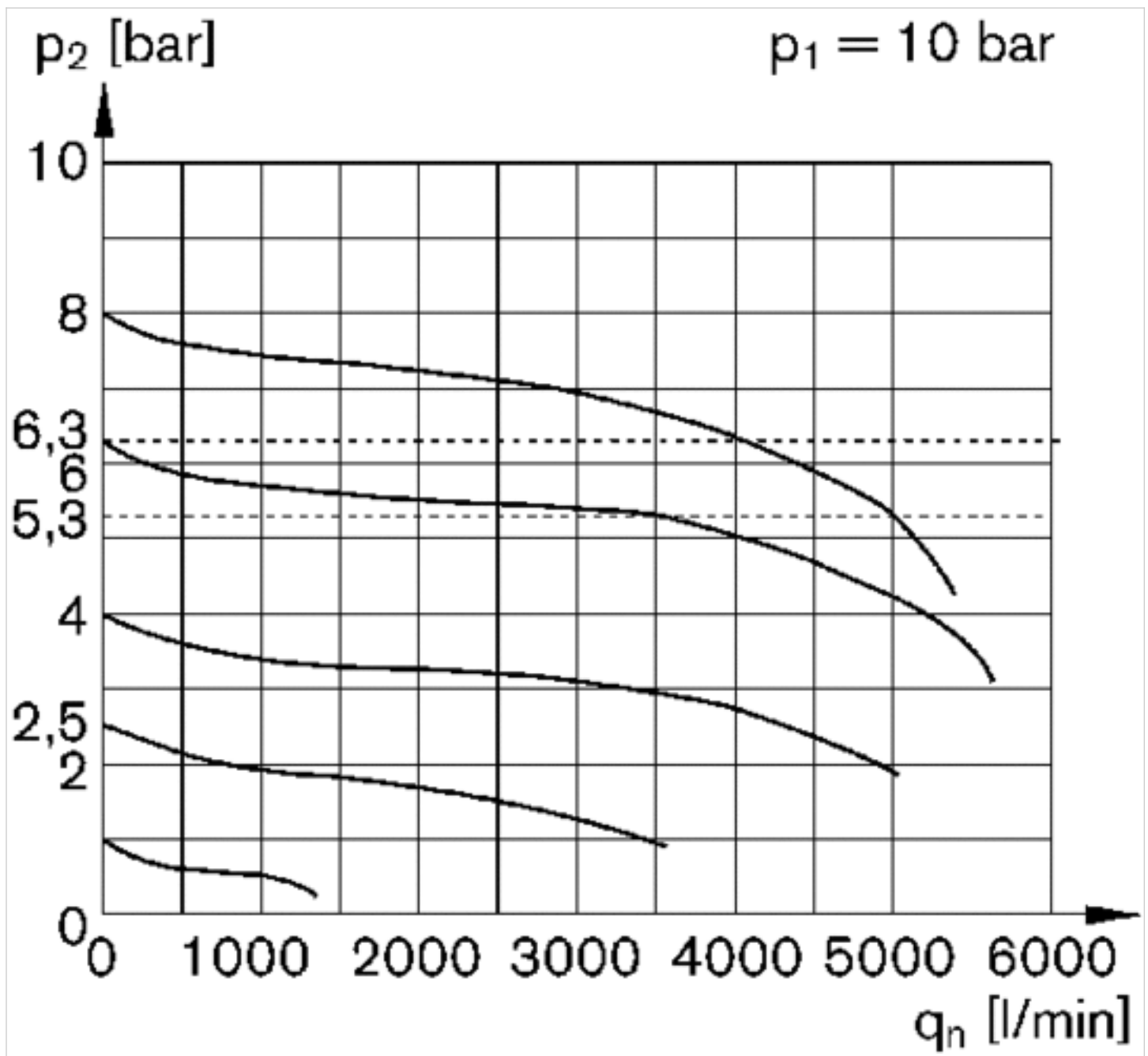
A1	A2	A3	A7	A8	B	C	D	E1	E2	G	H1	H2	H3	M	L1	L2	T7	V	W
G 3/8	G 3/8	G 1/4	G 1/8	G 1/8	126	74	80	63.5	27.5	M42x1,5	189.5	206	183	42.5	41	60	8.5	33	50
G 1/2	G 1/2	G 1/4	G 1/8	G 1/8	126	74	80	63.5	27.5	M42x1,5	189.5	206	183	42.5	41	60	8.5	33	50

Diagrams

Lubricator activation margin

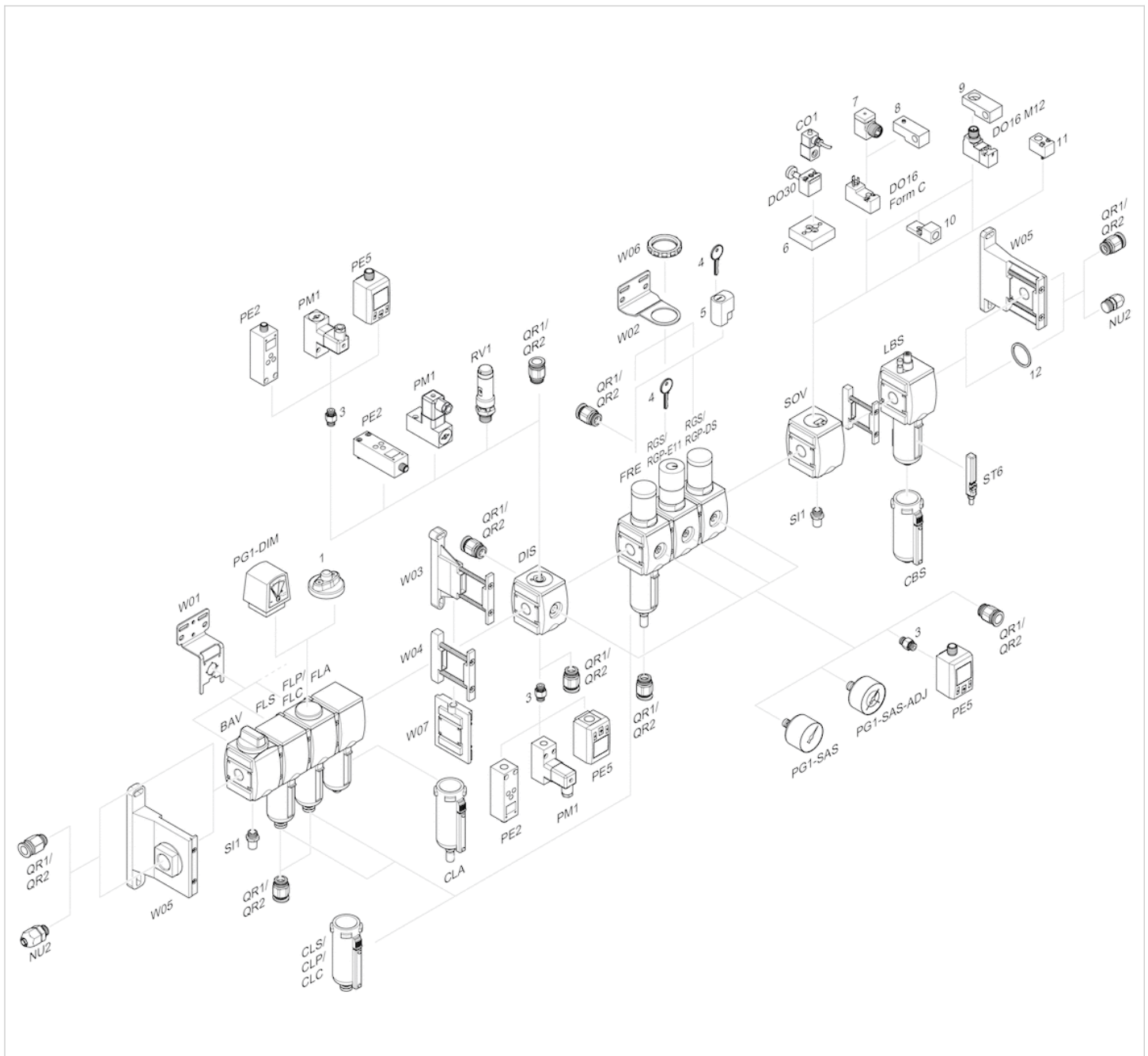


p_1 = working pressure
 q_n = nominal flow

Flow rate characteristic (p₂: 0,5 - 8 bar)

p₁ = Working pressure
p₂ = Secondary pressure
q_n = Nominal flow

Accessories overview



- 1 = contamination display
- 3 = Double nipple
- 4 = Key for E11 locking
- 5 = mortise lock
- 6 = Transition plate DO30
- 7 = Adapter, Series CON-VP
- 8 = Mounting aid DO16, form C
- 9 = Mounting aid DO16, M12
- 10 = Adapter for external pilot air
- 11 = Adapter pneumatic operation
- 12 = Sealing ring

Efficient pneumatic solutions, our program: cylinders and drives, valves and valve systems, air supply management



Visit us: [Emerson.com/Aventics](https://emerson.com/aventics)

Your local contact: [Emerson.com/contactus](https://emerson.com/contactus)



Emerson.com



Facebook.com/EmersonAutomationSolutions



LinkedIn.com/company/Emerson-Automation-Solutions



Twitter.com/EMR_Automation

An example configuration is depicted on the title page. The delivered product may thus vary from that in the illustration. Subject to change. This Document, as well as the data, specifications and other information set forth in it, are the exclusive property of AVENTICS GmbH. It may not be reproduced or given to third parties without its consent. Only use the AVENTICS products shown in industrial applications. Read the product documentation completely and carefully before using the product. Observe the applicable regulations and laws of the respective country. When integrating the product into applications, note the system manufacturer's specifications for safe use of the product. The data specified only serve to describe the product. No statements concerning a certain condition or suitability for a certain application can be derived from our information. The information given does not release the user from the obligation of own judgement and verification. It must be remembered that the products are subject to a natural process of wear and aging.

The Emerson logo is a trademark and service mark of Emerson Electric Co. Brand logotype are registered trademarks of one of the Emerson family of companies. All other marks are the property of their respective owners. © 2020 Emerson Electric Co. All rights reserved.
2020-12



CONSIDER IT SOLVED™