

Precision pressure regulator, Series AS3-RGP




- G 3/8 G 1/2
- Qn = 1600-5200 l/min
- Precision pressure regulator
- Activation Mechanical
- lockable
- for padlocks
- suitable for ATEX



Parts	Precision pressure regulator
Mounting orientation	Any
Certificates	suitable for ATEX
Working pressure min./max.	See table below
Ambient temperature min./max.	-10 ... 50 °C
Medium temperature min./max.	-10 ... 50 °C
Medium	Compressed air Neutral gases
Regulator type	Diaphragm-type pressure regulator Can be assembled into blocks
Regulator function	with relieving air exhaust
Adjustment range min./max.	See table below
Lock type	for padlocks
Pressure supply	single
Activation	Mechanical
Internal air consumption qv max.	2,6 l/min
Weight	See table below

Technical data

Part No.			Port	Flow	Working pressure min./max.	Adjustment range min./max.
				Qn		
R412007136		—	G 3/8	1600 l/min	0,1 ... 16 bar	0,1 ... 1 bar
R412007137		⊘	G 3/8	1600 l/min	0,1 ... 16 bar	0,1 ... 1 bar
R412007138		—	G 3/8	4600 l/min	0,1 ... 16 bar	0,1 ... 2 bar
R412007139		⊘	G 3/8	4600 l/min	0,1 ... 16 bar	0,1 ... 2 bar
R412007140		—	G 3/8	5000 l/min	0,2 ... 16 bar	0,2 ... 4 bar
R412007141		⊘	G 3/8	5000 l/min	0,2 ... 16 bar	0,2 ... 4 bar
R412007142		—	G 3/8	4300 l/min	0,5 ... 16 bar	0,5 ... 8 bar
R412007143		⊘	G 3/8	4300 l/min	0,5 ... 16 bar	0,5 ... 8 bar
R412007144		—	G 3/8	4300 l/min	0,5 ... 16 bar	0,5 ... 10 bar
R412007145		⊘	G 3/8	4300 l/min	0,5 ... 16 bar	0,5 ... 10 bar
R412007148		—	G 1/2	1600 l/min	0,1 ... 16 bar	0,1 ... 1 bar
R412007149		⊘	G 1/2	1600 l/min	0,1 ... 16 bar	0,1 ... 1 bar
R412007150		—	G 1/2	4600 l/min	0,1 ... 16 bar	0,1 ... 2 bar
R412007151		⊘	G 1/2	4600 l/min	0,1 ... 16 bar	0,1 ... 2 bar
R412007152		—	G 1/2	5000 l/min	0,2 ... 16 bar	0,2 ... 4 bar
R412007153		⊘	G 1/2	5000 l/min	0,2 ... 16 bar	0,2 ... 4 bar
R412007154		—	G 1/2	5200 l/min	0,5 ... 16 bar	0,5 ... 8 bar
R412007155		⊘	G 1/2	5200 l/min	0,5 ... 16 bar	0,5 ... 8 bar

Part No.			Port	Flow	Working pressure min./max.	Adjustment range min./max.
				Qn		
R412007156		—	G 1/2	5200 l/min	0,5 ... 16 bar	0,5 ... 10 bar
R412007157			G 1/2	5200 l/min	0,5 ... 16 bar	0,5 ... 10 bar

Part No.	Pressure gauge	Weight	
R412007136	-	0,528 kg	1)
R412007137	with pressure gauge	0,6 kg	2)
R412007138	-	0,528 kg	1)
R412007139	with pressure gauge	0,6 kg	2)
R412007140	-	0,528 kg	1)
R412007141	with pressure gauge	0,6 kg	2)
R412007142	-	0,528 kg	1)
R412007143	with pressure gauge	0,6 kg	2)
R412007144	-	0,528 kg	1)
R412007145	with pressure gauge	0,6 kg	2)
R412007148	-	0,528 kg	1)
R412007149	with pressure gauge	0,6 kg	2)
R412007150	-	0,528 kg	1)
R412007151	with pressure gauge	0,6 kg	2)
R412007152	-	0,528 kg	1)
R412007153	with pressure gauge	0,6 kg	2)
R412007154	-	0,528 kg	1)
R412007155	with pressure gauge	0,6 kg	2)
R412007156	-	0,528 kg	1)
R412007157	with pressure gauge	0,6 kg	2)

Nominal flow Qn with secondary pressure p2 = 6 bar at $\Delta p = 1$ bar

- 1) Order pressure gauge separately, Suitable for use in Ex zones 1, 2, 21, 22.
- 2) Pressure gauge enclosed separately, Suitable for use in Ex zones 1, 2, 21, 22.

Technical information

The pressure dew point must be at least 15 °C under ambient and medium temperature and may not exceed 3 °C .

The rear pressure gauge connection on the pressure regulator is closed with a blanking plug, the front connection is open. Depending on the customer application, a second blanking plug may be necessary. Please order separately (see accessories).

A change in the flow direction (from air supply on the left to air supply on the right) occurs by rotating installation by 180° about the vertical axis. Please see the operating instructions for further details.

Recommended pre-filter: 5 µm

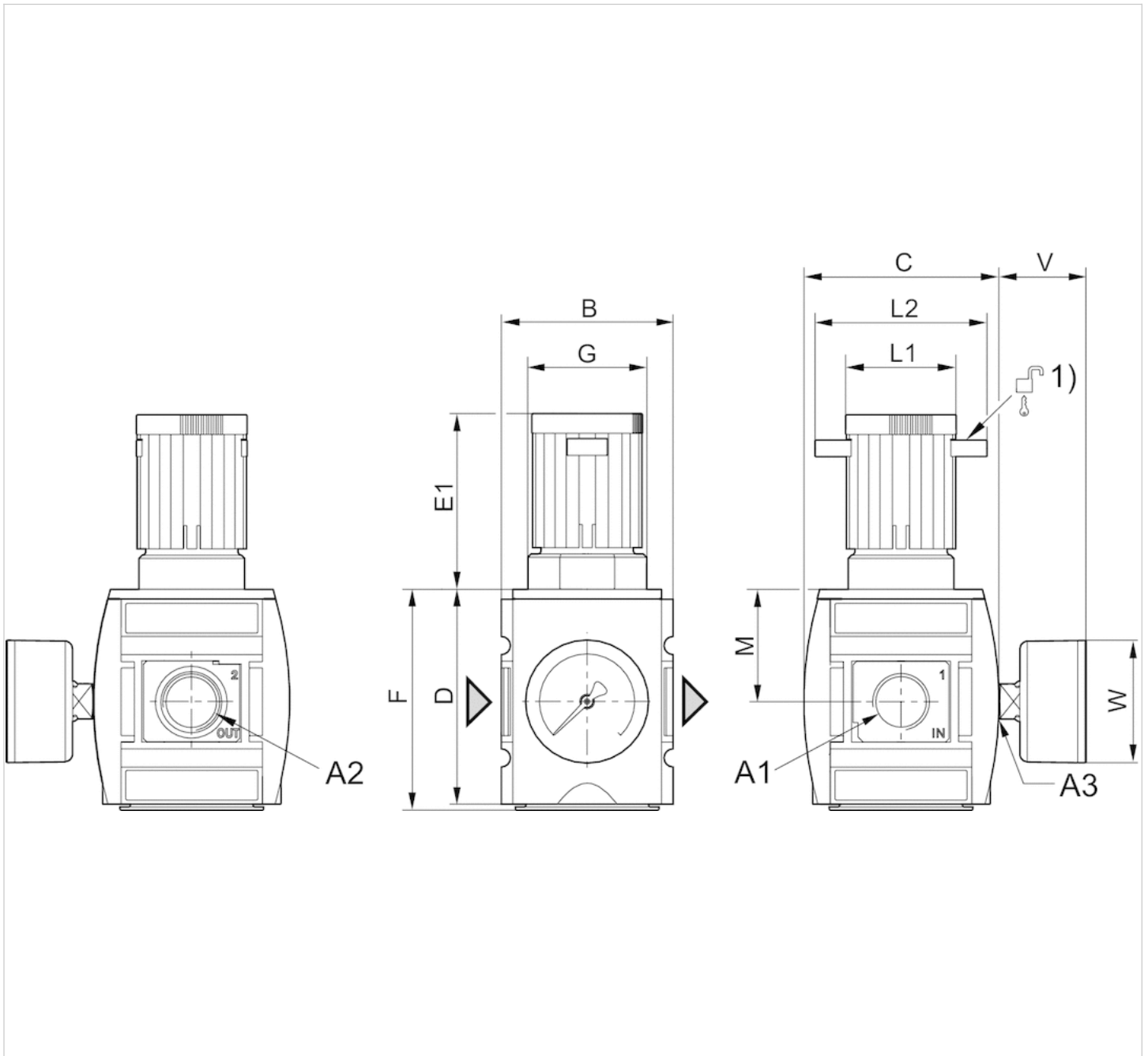
Suitable for use in Ex zones 1, 2, 21, 22.

Technical information

Material	
Housing	Polyamide
Front plate	Acrylonitrile butadiene styrene
Seals	Acrylonitrile butadiene rubber
Threaded bushing	Die cast zinc

Dimensions

Dimensions



A1 = input

A2 = output

A3 = pressure gauge connection

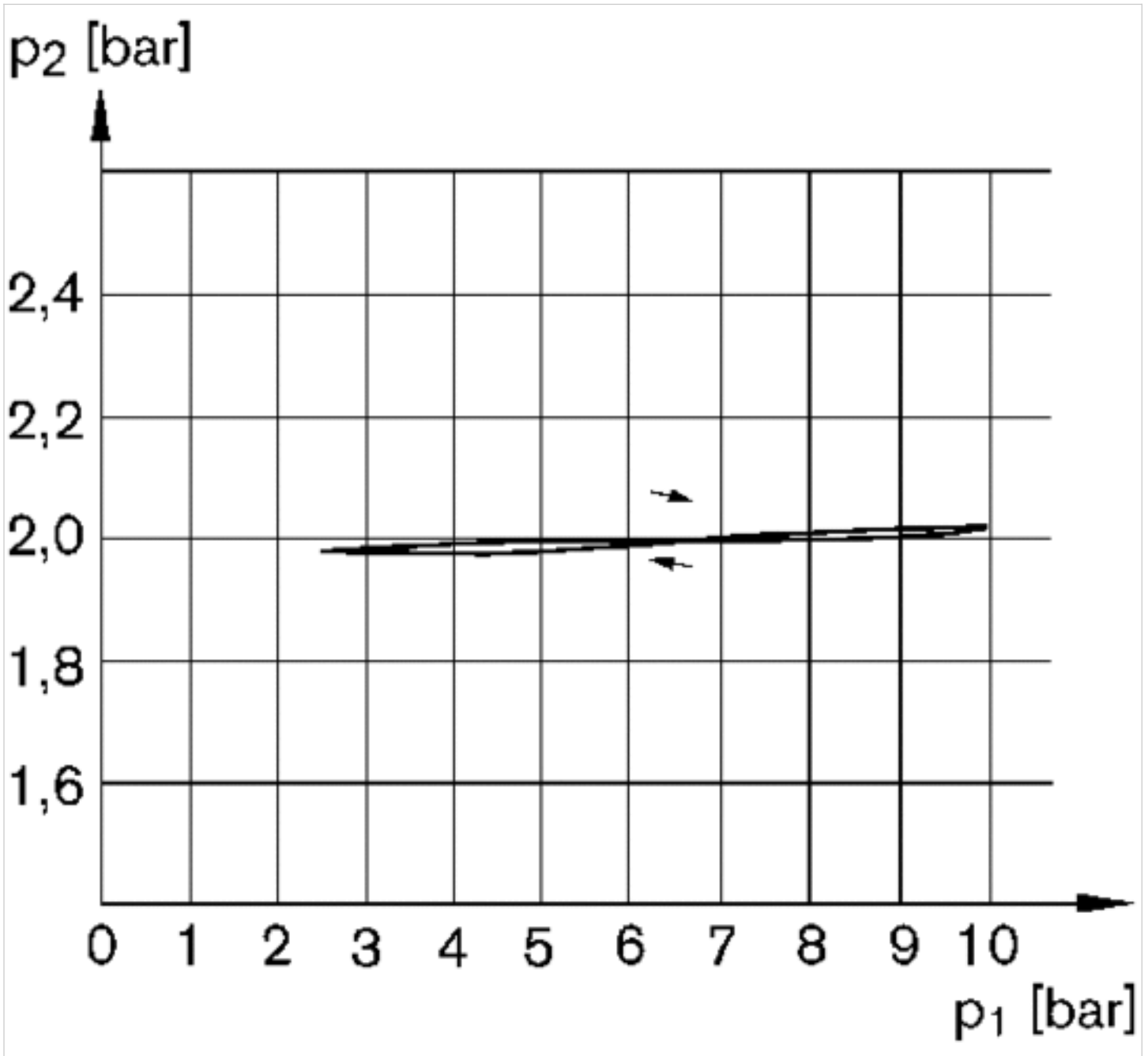
1) Mounting option for padlocks, max. shackle Ø 8

Dimensions in mm

A1	A2	A3	B	C	D	E1	F	G	L1	L2	M	V	W
G 3/8	G 3/8	G 1/4	63	74	80	63.5	82	M42x1,5	41	60	42.5	33	50
G 1/2	G 1/2	G 1/4	63	74	80	63.5	82	M42x1,5	41	60	42.5	33	50

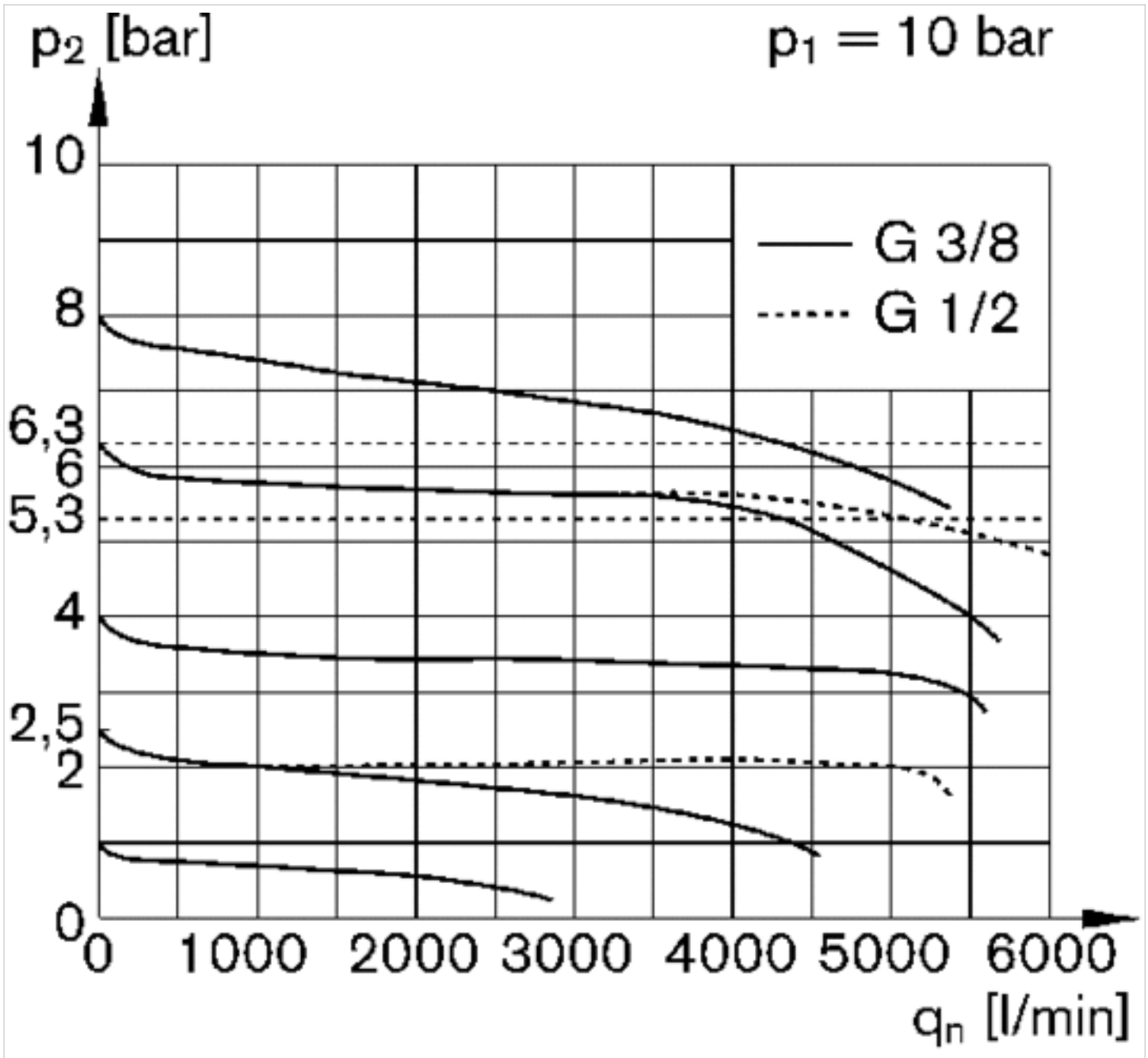
Diagrams

Pressure characteristics curve



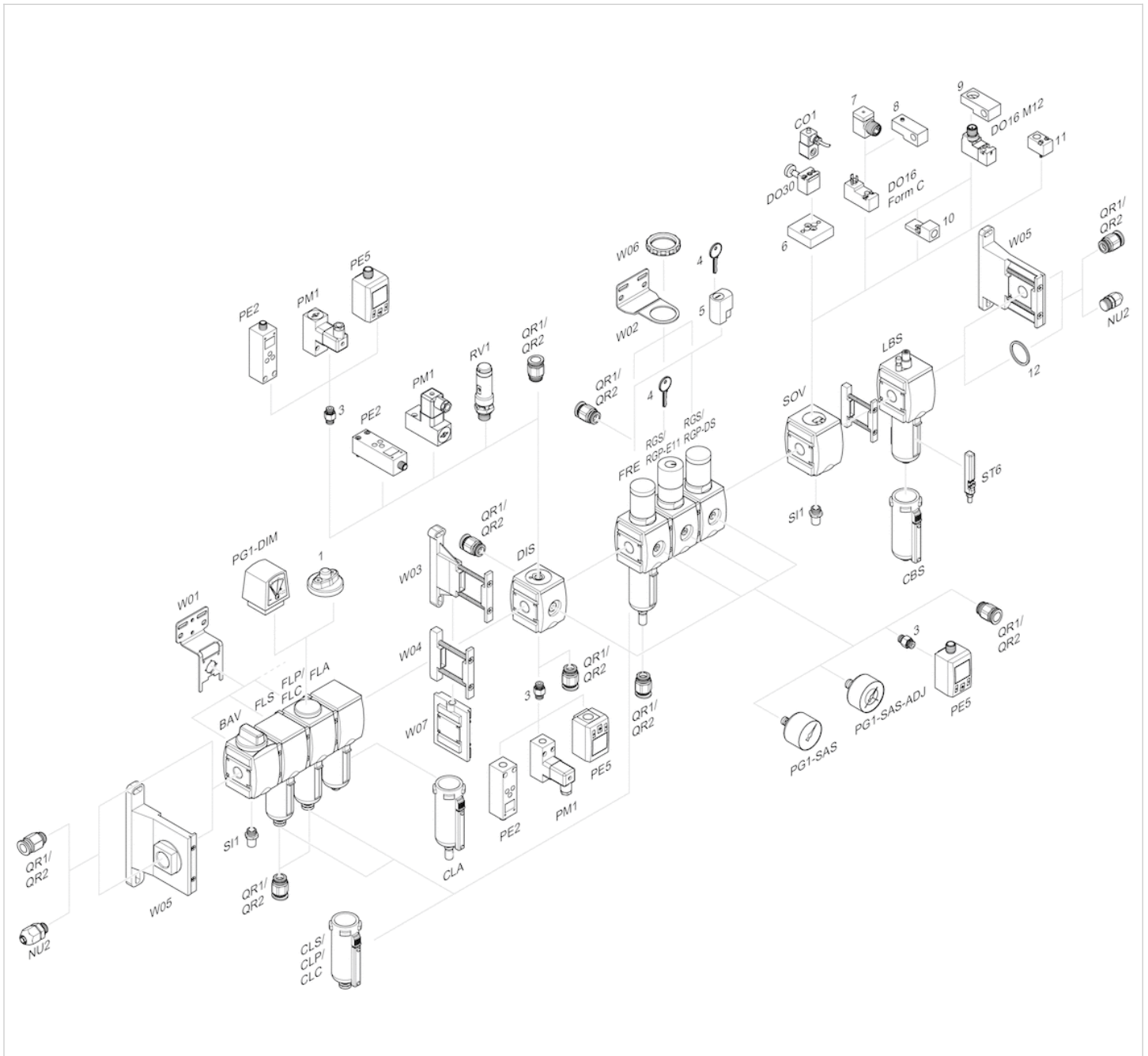
p_1 = working pressure
 p_2 = secondary pressure

Flow rate characteristic (p2: 0,5 - 8 bar)



p1 = Working pressure
 p2 = Secondary pressure
 qn = Nominal flow

Accessories overview



- 1 = contamination display
- 3 = Double nipple
- 4 = Key for E11 locking
- 5 = mortise lock
- 6 = Transition plate DO30
- 7 = Adapter, Series CON-VP
- 8 = Mounting aid DO16, form C
- 9 = Mounting aid DO16, M12
- 10 = Adapter for external pilot air
- 11 = Adapter pneumatic operation
- 12 = Sealing ring

Efficient pneumatic solutions, our program: cylinders and drives, valves and valve systems, air supply management



Visit us: [Emerson.com/Aventics](https://www.emerson.com/Aventics)

Your local contact: [Emerson.com/contactus](https://www.emerson.com/contactus)



[Emerson.com](https://www.emerson.com)



[Facebook.com/EmersonAutomationSolutions](https://www.facebook.com/EmersonAutomationSolutions)



[LinkedIn.com/company/Emerson-Automation-Solutions](https://www.linkedin.com/company/Emerson-Automation-Solutions)



[Twitter.com/EMR_Automation](https://twitter.com/EMR_Automation)

An example configuration is depicted on the title page. The delivered product may thus vary from that in the illustration. Subject to change. This Document, as well as the data, specifications and other information set forth in it, are the exclusive property of AVENTICS GmbH. It may not be reproduced or given to third parties without its consent. Only use the AVENTICS products shown in industrial applications. Read the product documentation completely and carefully before using the product. Observe the applicable regulations and laws of the respective country. When integrating the product into applications, note the system manufacturer's specifications for safe use of the product. The data specified only serve to describe the product. No statements concerning a certain condition or suitability for a certain application can be derived from our information. The information given does not release the user from the obligation of own judgement and verification. It must be remembered that the products are subject to a natural process of wear and aging.

The Emerson logo is a trademark and service mark of Emerson Electric Co. Brand logotype are registered trademarks of one of the Emerson family of companies. All other marks are the property of their respective owners. © 2020 Emerson Electric Co. All rights reserved.
2020-12



CONSIDER IT SOLVED™