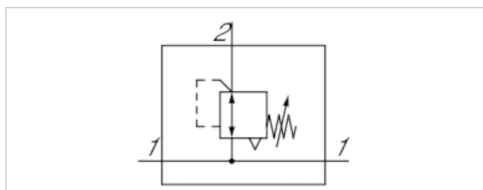


Pressure regulator, Series AS3-RGS-...-DS

- G 3/8 G 1/2
- Qn = 1600-5200 l/min
- Standard pressure regulator
- Activation Mechanical
- with continuous pressure supply
- lockable
- for padlocks
- suitable for ATEX



Parts

Mounting orientation

Certificates

Working pressure min./max.

Ambient temperature min./max.

Medium temperature min./max.

Medium

Regulator type

Regulator function

Adjustment range min./max.

Lock type

Pressure supply

Activation

Weight

Pressure regulator with continuous pressure supply

Any

suitable for ATEX

See table below

-10 ... 50 °C

-10 ... 50 °C

Compressed air Neutral gases

Diaphragm-type pressure regulator Can be assembled into blocks

with relieving air exhaust

See table below

for padlocks

double

Mechanical

0,528 kg

Technical data

Part No.	Port	Flow	Working pressure min./max.	Adjustment range min./max.
		Qn		
R412007124	G 3/8	1600 l/min	0,1 ... 16 bar	0,1 ... 1 bar
R412007125	G 3/8	4600 l/min	0,1 ... 16 bar	0,1 ... 2 bar
R412007126	G 3/8	5000 l/min	0,2 ... 16 bar	0,2 ... 4 bar
R412007127	G 3/8	4300 l/min	0,5 ... 16 bar	0,5 ... 8 bar
R412007128	G 3/8	4300 l/min	0,5 ... 16 bar	0,5 ... 10 bar
R412007129	G 3/8	3500 l/min	0,5 ... 16 bar	0,5 ... 16 bar
R412007130	G 1/2	1600 l/min	0,1 ... 16 bar	0,1 ... 1 bar
R412007131	G 1/2	4600 l/min	0,1 ... 16 bar	0,1 ... 2 bar
R412007132	G 1/2	5000 l/min	0,2 ... 16 bar	0,2 ... 4 bar
R412007133	G 1/2	5200 l/min	0,5 ... 16 bar	0,5 ... 8 bar
R412007134	G 1/2	5200 l/min	0,5 ... 16 bar	0,5 ... 10 bar
R412007135	G 1/2	4000 l/min	0,5 ... 16 bar	0,5 ... 16 bar

Part No.	Max. pressure gauge Ø in blocked state
R412007124	50 mm

Part No.	Max. pressure gauge Ø in blocked state
R412007125	50 mm
R412007126	50 mm
R412007127	50 mm
R412007128	50 mm
R412007129	50 mm
R412007130	50 mm
R412007131	50 mm
R412007132	50 mm
R412007133	50 mm
R412007134	50 mm
R412007135	50 mm

Nominal flow Q_n with secondary pressure $p_2 = 6$ bar at $\Delta p = 1$ bar

Order pressure gauge separately, Suitable for use in Ex zones 1, 2, 21, 22.

Technical information

The pressure dew point must be at least 15 °C under ambient and medium temperature and may not exceed 3 °C .

The rear pressure gauge connection on the pressure regulator is closed with a blanking plug, the front connection is open. Depending on the customer application, a second blanking plug may be necessary. Please order separately (see accessories).

Suitable for use in Ex zones 1, 2, 21, 22.

Relieving exhaust (≤ 0.3 bar over set pressure).

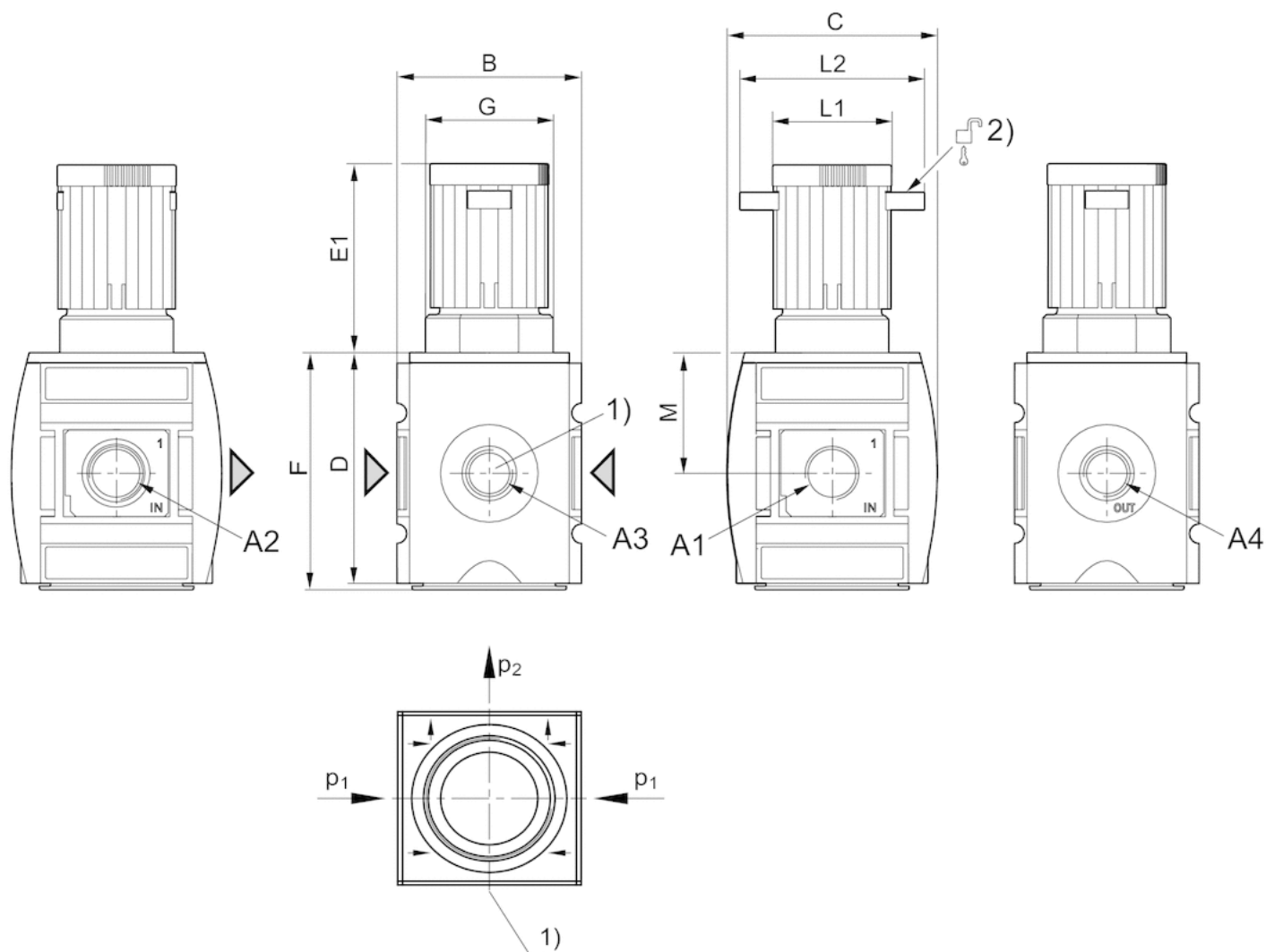
With rear exhaust (> 3 bar).

Technical information

Material	
Housing	Polyamide
Front plate	Acrylonitrile butadiene styrene
Seals	Acrylonitrile butadiene rubber
Threaded bushing	Die cast zinc

Dimensions

Dimensions



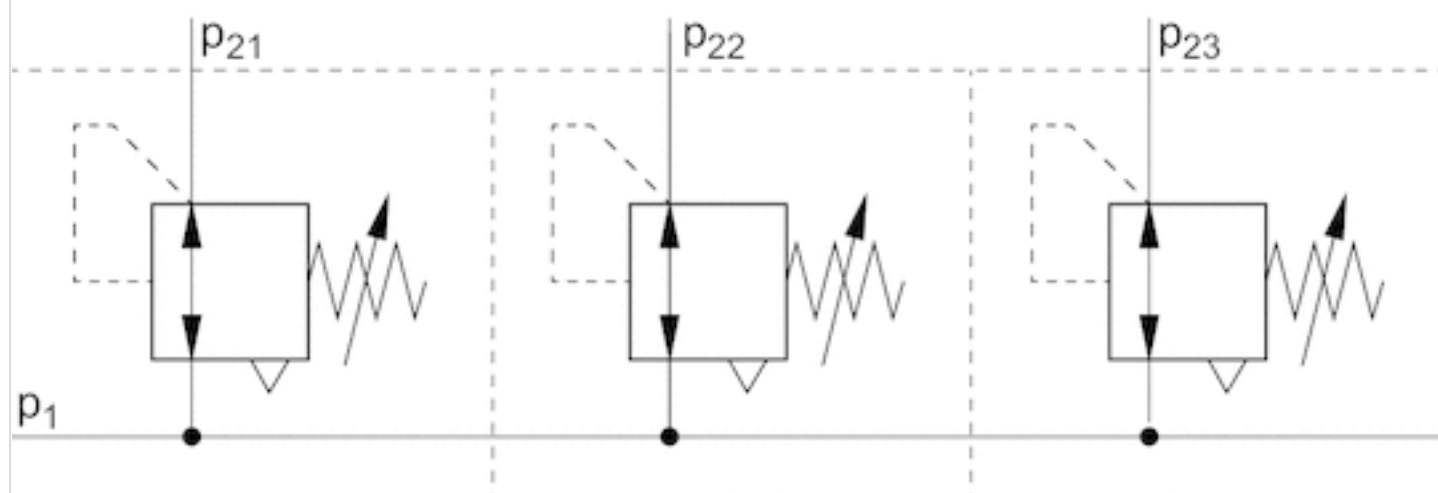
- A1 = input
 A2 = output
 A3 = pressure gauge connection
 A4 = output
 1) Pressure gauge connection
 2) Mounting option for padlocks, max. shackle Ø 8

Dimensions in mm

A1	A2	A3	A4	B	C	D	E1	F	G	L1	L2	M
G 3/8	G 3/8	G 1/4	G 3/8	63	74	80	63.5	82	M42x1,5	41	60	42.5
G 1/2	G 1/2	G 1/4	G 3/8	63	74	80	63.5	82	M42x1,5	41	60	42.5

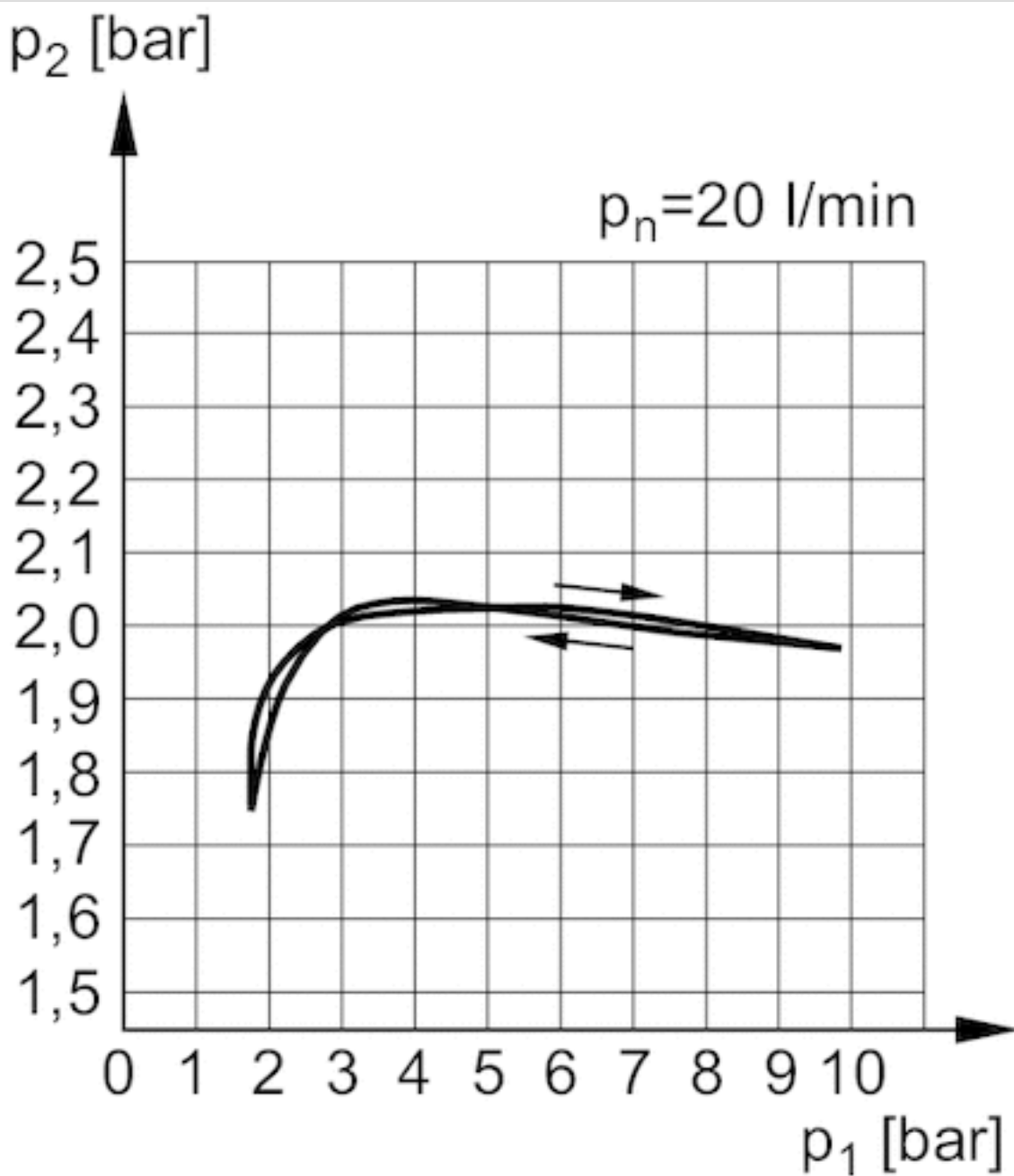
Diagrams

Application example

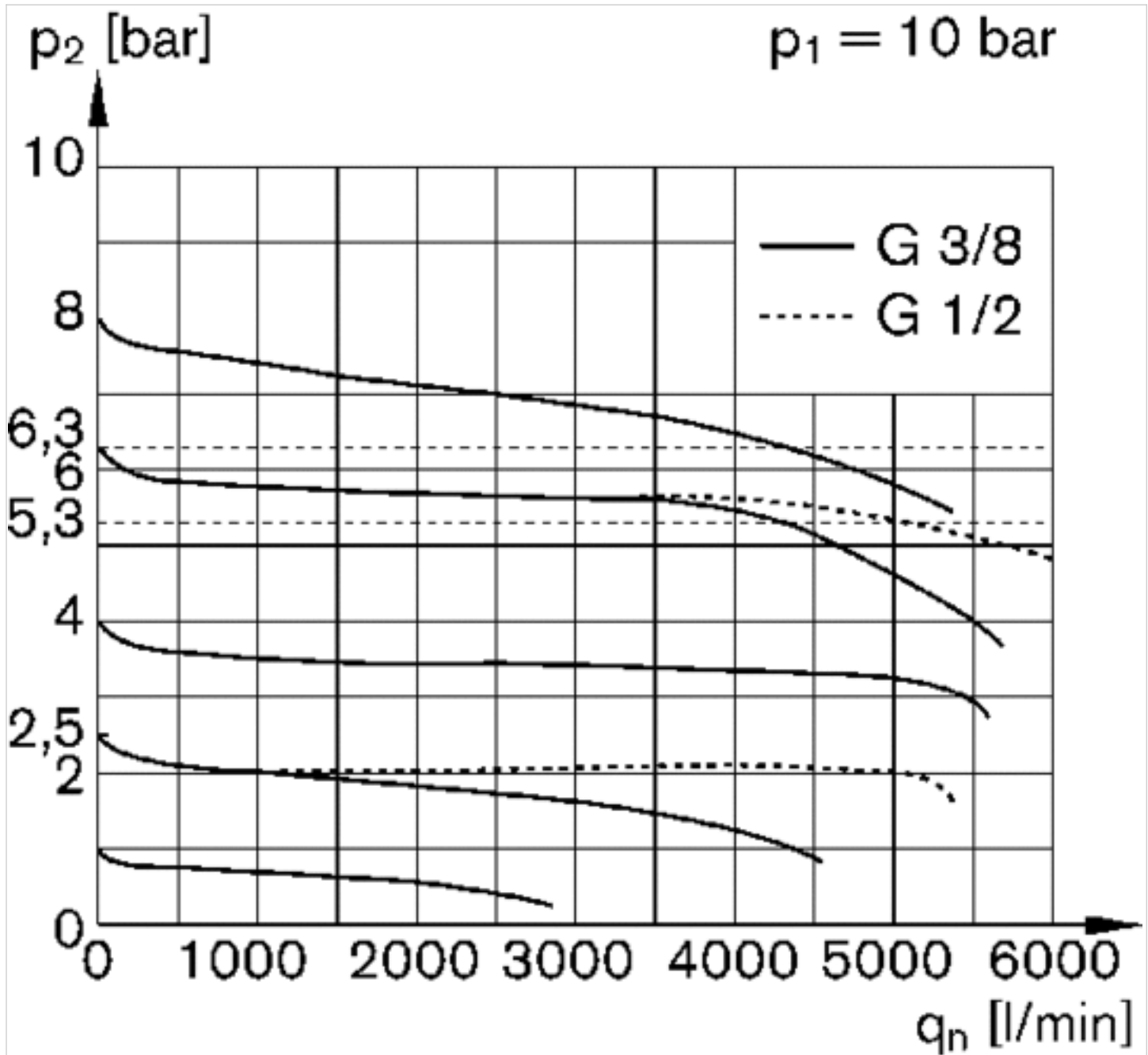


p_1 = working pressure

Pressure characteristics curve

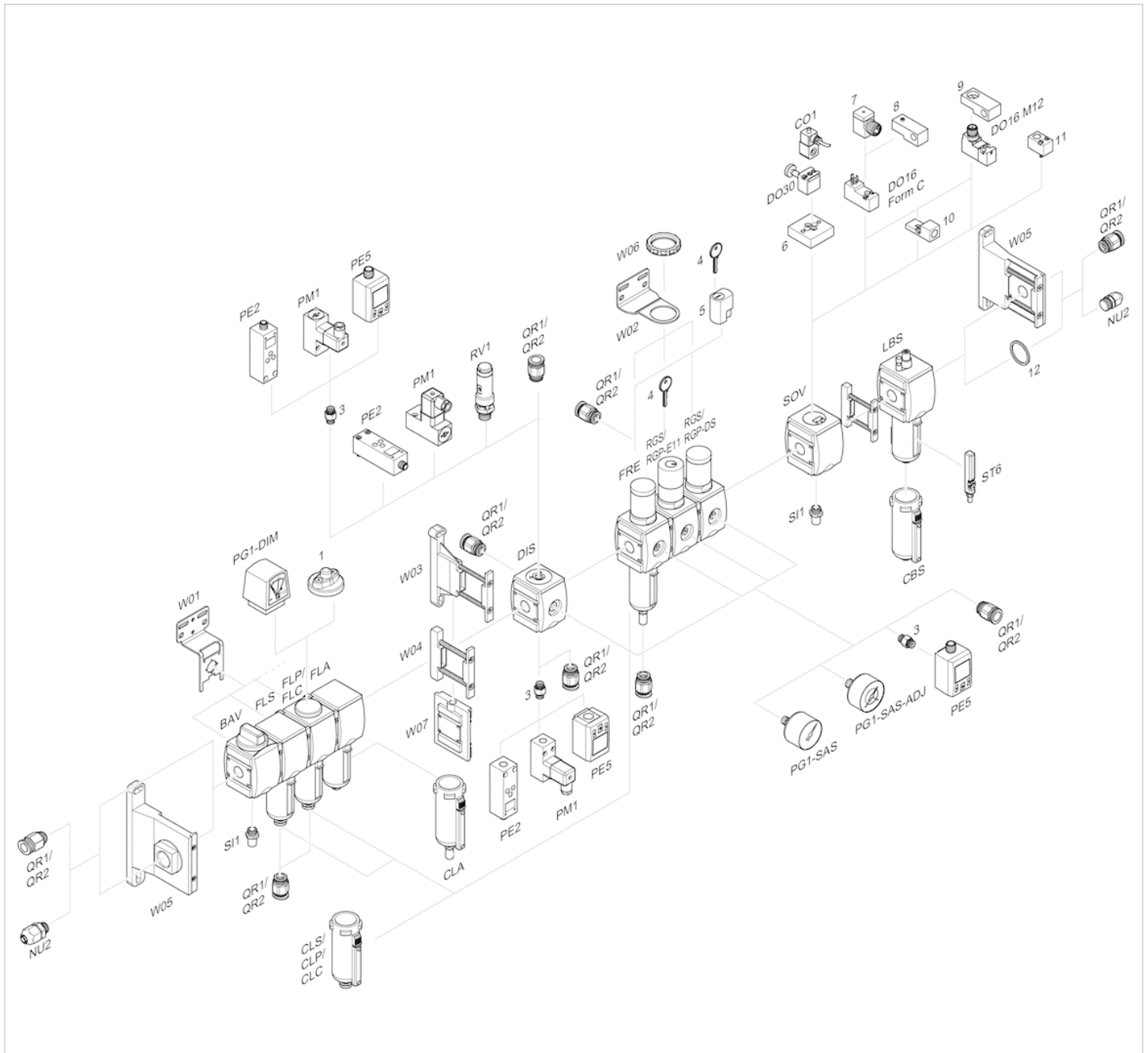


p_1 = Working pressure
 p_2 = Secondary pressure
 q_n = Nominal flow

Flow rate characteristic (p₂: 0,5 - 8 bar)

p₁ = Working pressure
 p₂ = Secondary pressure
 q_n = Nominal flow

Accessories overview



- 1 = contamination display
- 3 = Double nipple
- 4 = Key for E11 locking
- 5 = mortise lock
- 6 = Transition plate DO30
- 7 = Adapter, Series CON-VP
- 8 = Mounting aid DO16, form C
- 9 = Mounting aid DO16, M12
- 10 = Adapter for external pilot air
- 11 = Adapter pneumatic operation
- 12 = Sealing ring

Efficient pneumatic solutions, our program: cylinders and drives, valves and valve systems, air supply management



Visit us: [Emerson.com/Aventics](https://www.emerson.com/Aventics)

Your local contact: [Emerson.com/contactus](https://www.emerson.com/contactus)



Emerson.com



Facebook.com/EmersonAutomationSolutions



LinkedIn.com/company/Emerson-Automation-Solutions



Twitter.com/EMR_Automation

An example configuration is depicted on the title page. The delivered product may thus vary from that in the illustration. Subject to change. This Document, as well as the data, specifications and other information set forth in it, are the exclusive property of AVENTICS GmbH. It may not be reproduced or given to third parties without its consent. Only use the AVENTICS products shown in industrial applications. Read the product documentation completely and carefully before using the product. Observe the applicable regulations and laws of the respective country. When integrating the product into applications, note the system manufacturer's specifications for safe use of the product. The data specified only serve to describe the product. No statements concerning a certain condition or suitability for a certain application can be derived from our information. The information given does not release the user from the obligation of own judgement and verification. It must be remembered that the products are subject to a natural process of wear and aging.

The Emerson logo is a trademark and service mark of Emerson Electric Co. Brand logotype are registered trademarks of one of the Emerson family of companies. All other marks are the property of their respective owners. © 2021 Emerson Electric Co. All rights reserved.
2021-05



CONSIDER IT SOLVED™