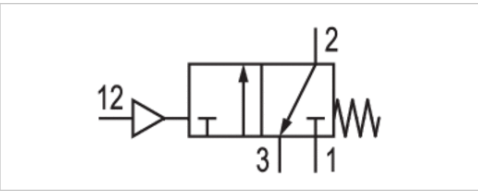


3/2-directional valve, pneumatically operated, Series AS2-SOV

- Compressed air connection G 1/4 G 3/8
- Pipe connection
- suitable for ATEX



Type	Poppet valve, Can be assembled into blocks
Sealing principle	Soft sealing
Certificates	suitable for ATEX
Working pressure min./max.	0 ... 16 bar
Control pressure min./max.	2,5 ... 16 bar
Ambient temperature min./max.	-10 ... 50 °C
Medium temperature min./max.	-10 ... 50 °C
Medium	Compressed air Neutral gases
Weight	0,219 kg

Technical data

Part No.	Port	Pilot connection	Exhaust	Flow	Flow	Flow	Fig.
				Qn	Qn 1→2	Qn 2→3	
R412006262	G 1/4	G 1/8	G 1/4	2000 l/min	2000 l/min	380 l/min	Fig. 1
R412006263	G 3/8	G 1/8	G 1/4	2000 l/min	2000 l/min	380 l/min	Fig. 2

Nominal flow Qn with secondary pressure p2 = 6 bar at Δp = 1 bar

Suitable for use in Ex zones 1, 2, 21, 22.

Technical information

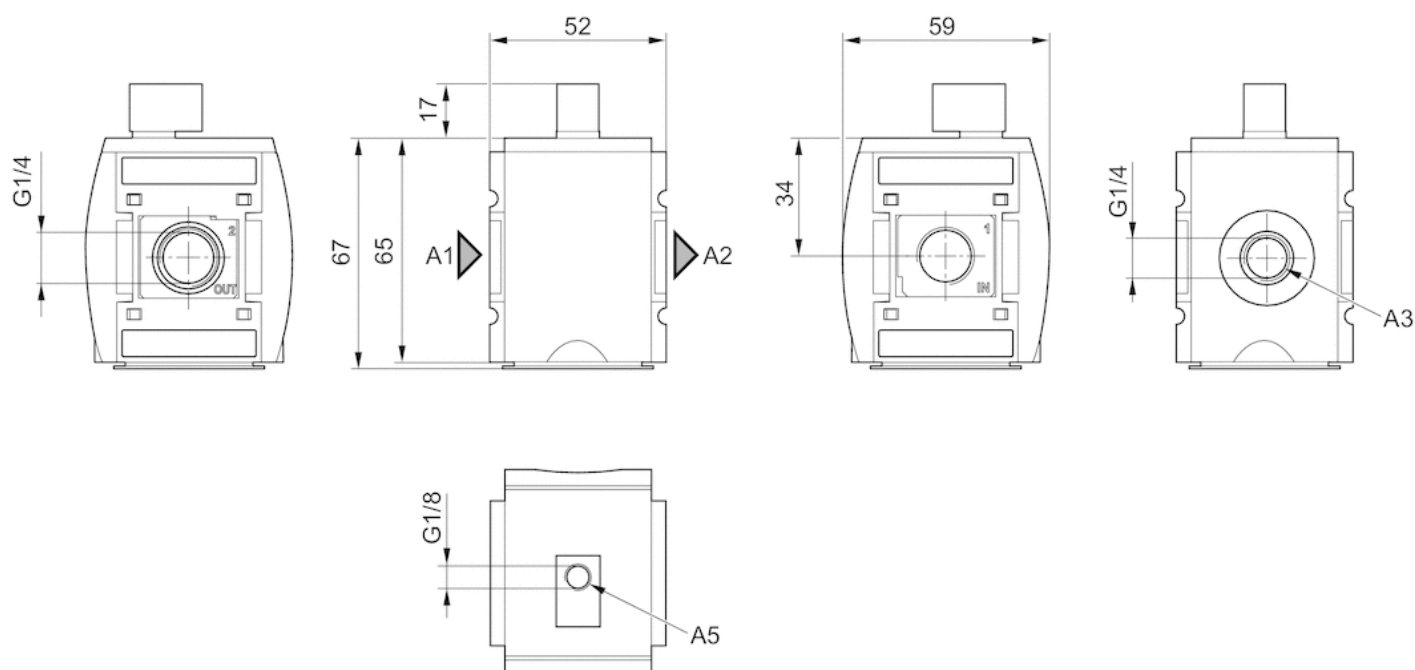
The pressure dew point must be at least 15 °C under ambient and medium temperature and may not exceed 3 °C .
A short silencer is required for wall mounting (see accessories e.g. R412004817).

Technical information

Material	
Housing	Polyamide
Front plate	Acrylonitrile butadiene styrene
Seals	Acrylonitrile butadiene rubber
Threaded bushing	Die cast zinc

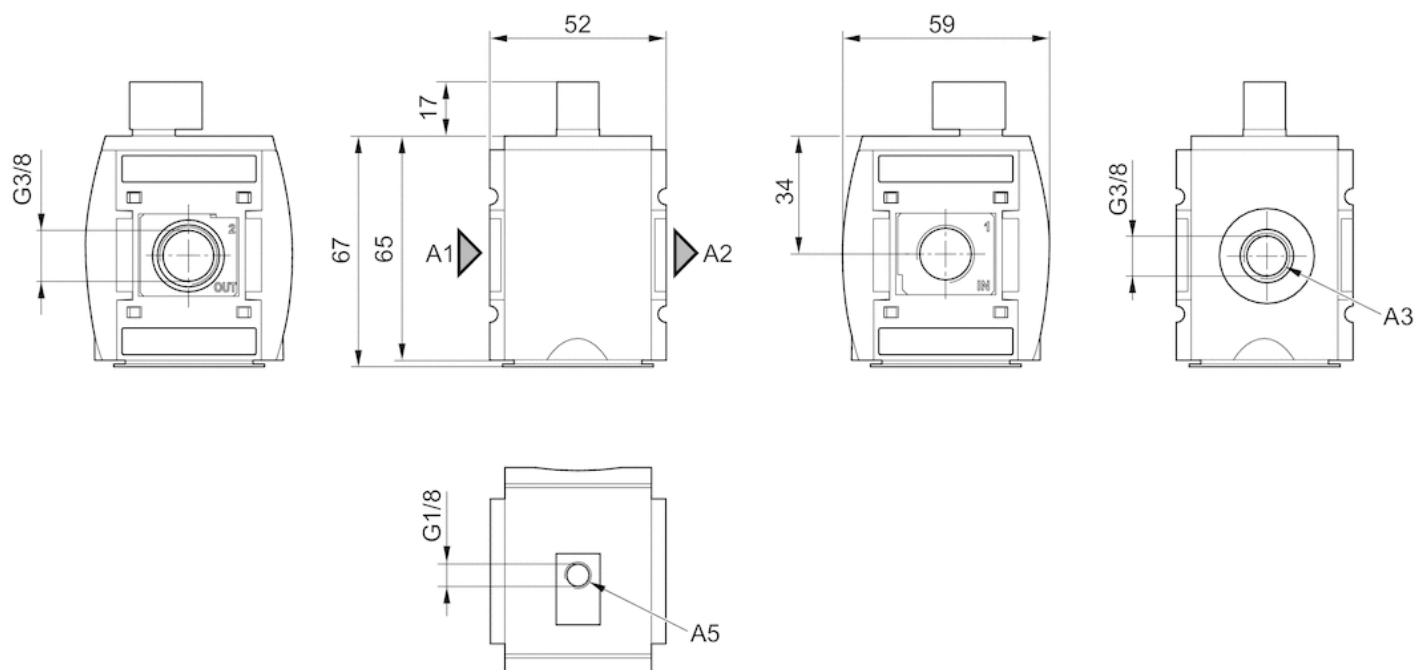
Dimensions

Dimensions in mm, Fig. 1



A1 = input
A2 = output
A3 = ventilation port
A5 = control pressure connection

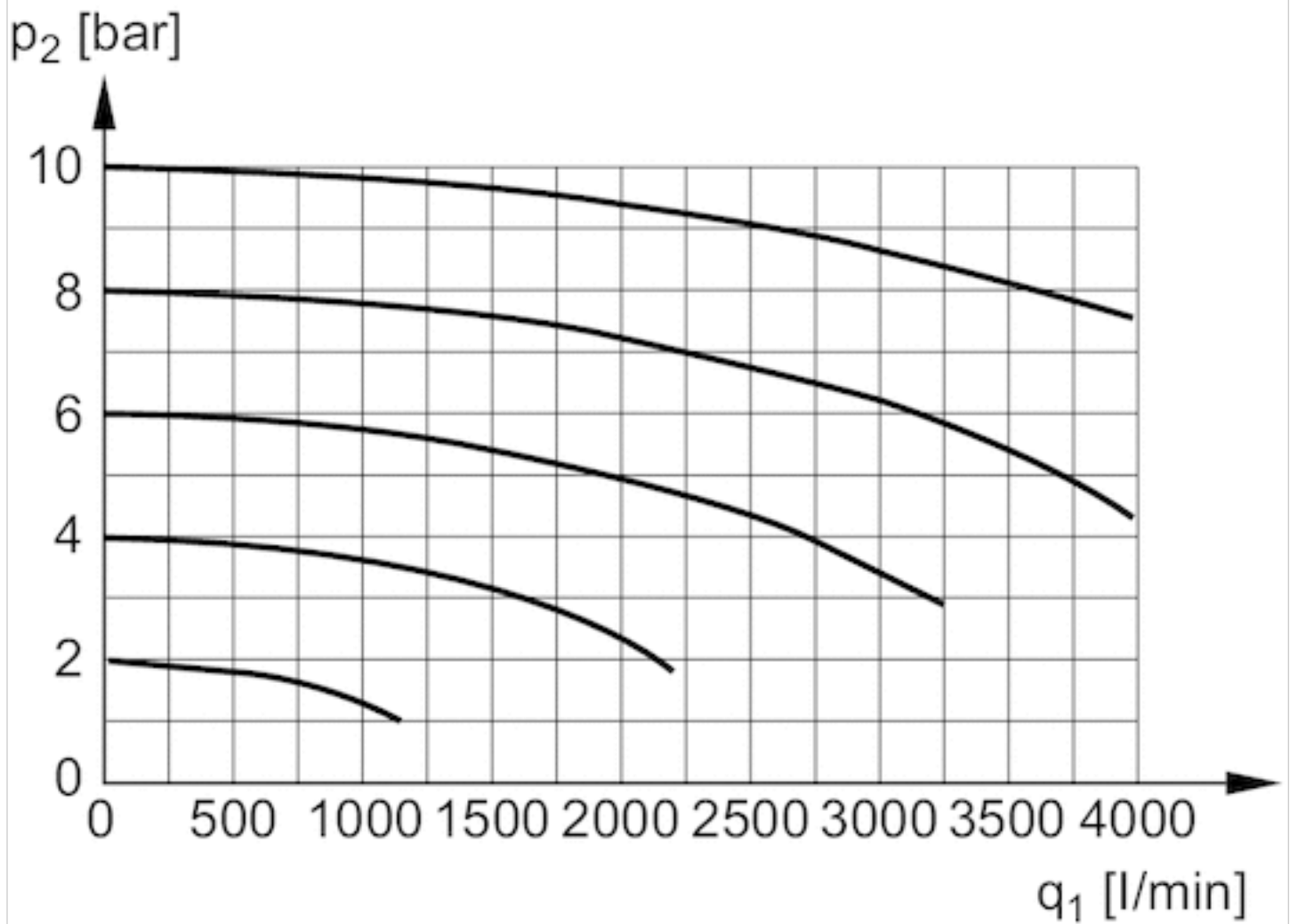
Dimensions in mm, Fig. 2



- A1 = input
A2 = output
A3 = ventilation port
A5 = control pressure connection

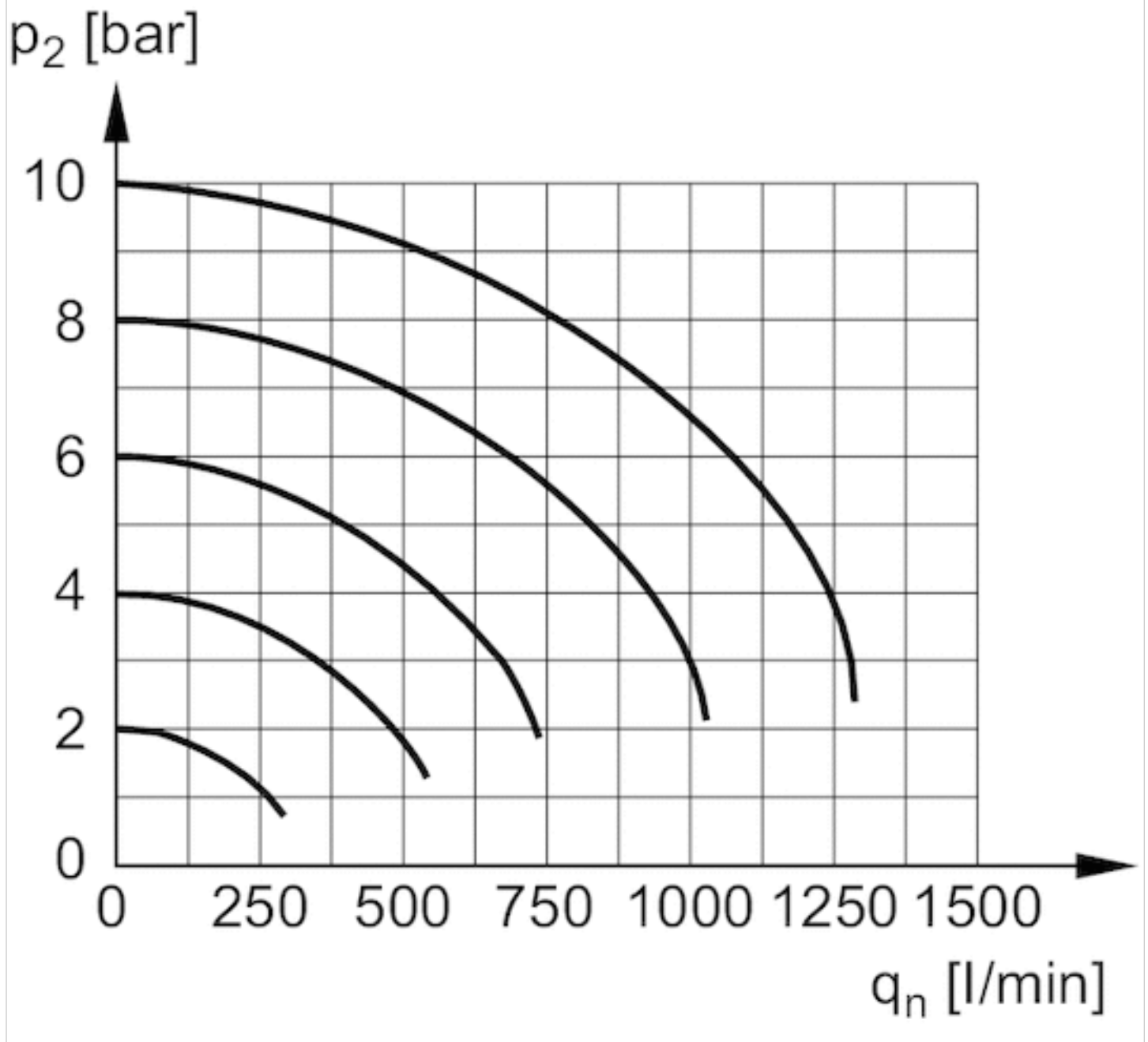
Diagrams

Flow rate characteristic



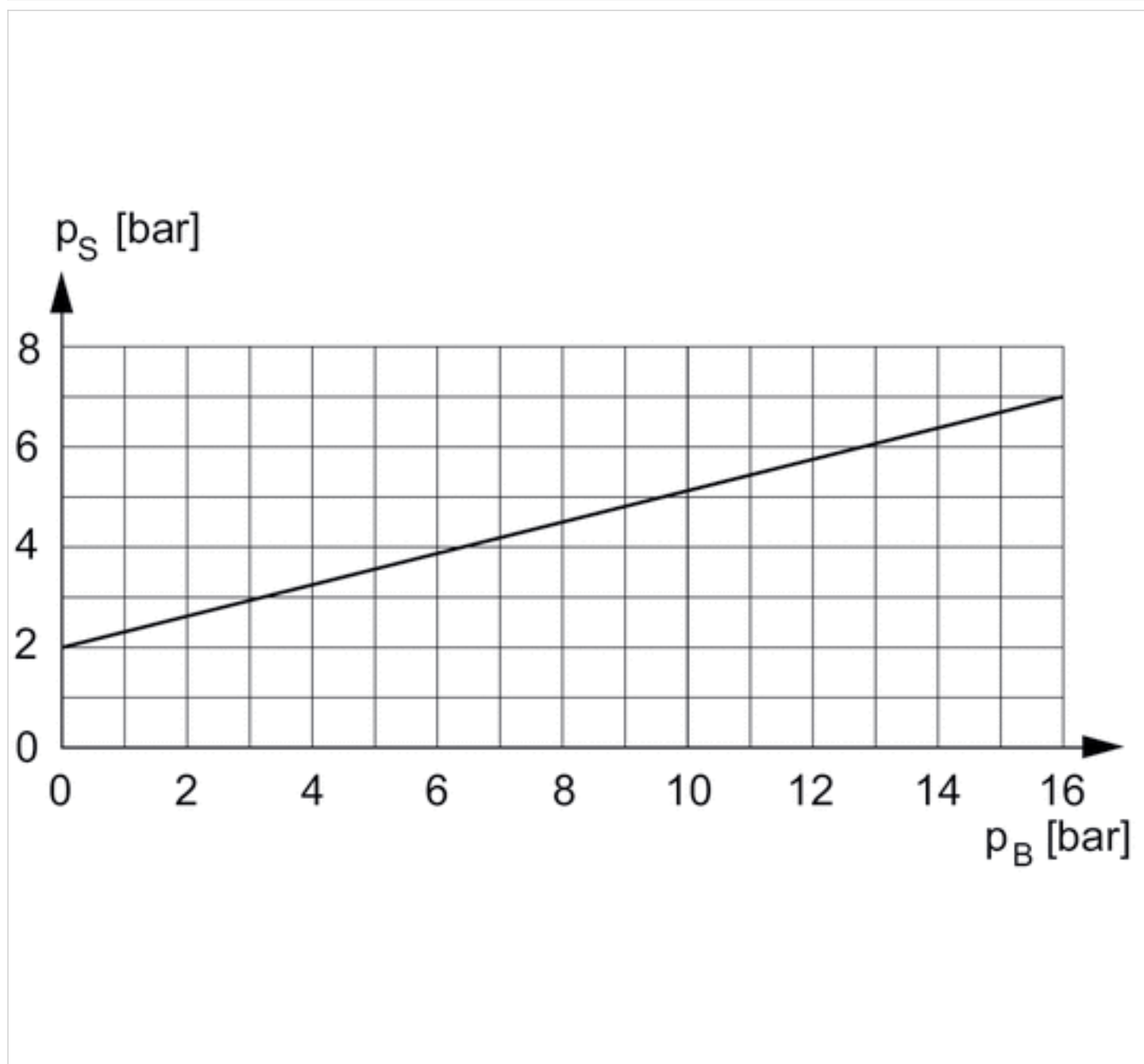
p_2 = secondary pressure
 q_n = nominal flow

Rear exhaust



p_2 = secondary pressure
 q_n = nominal flow

control pressure characteristic

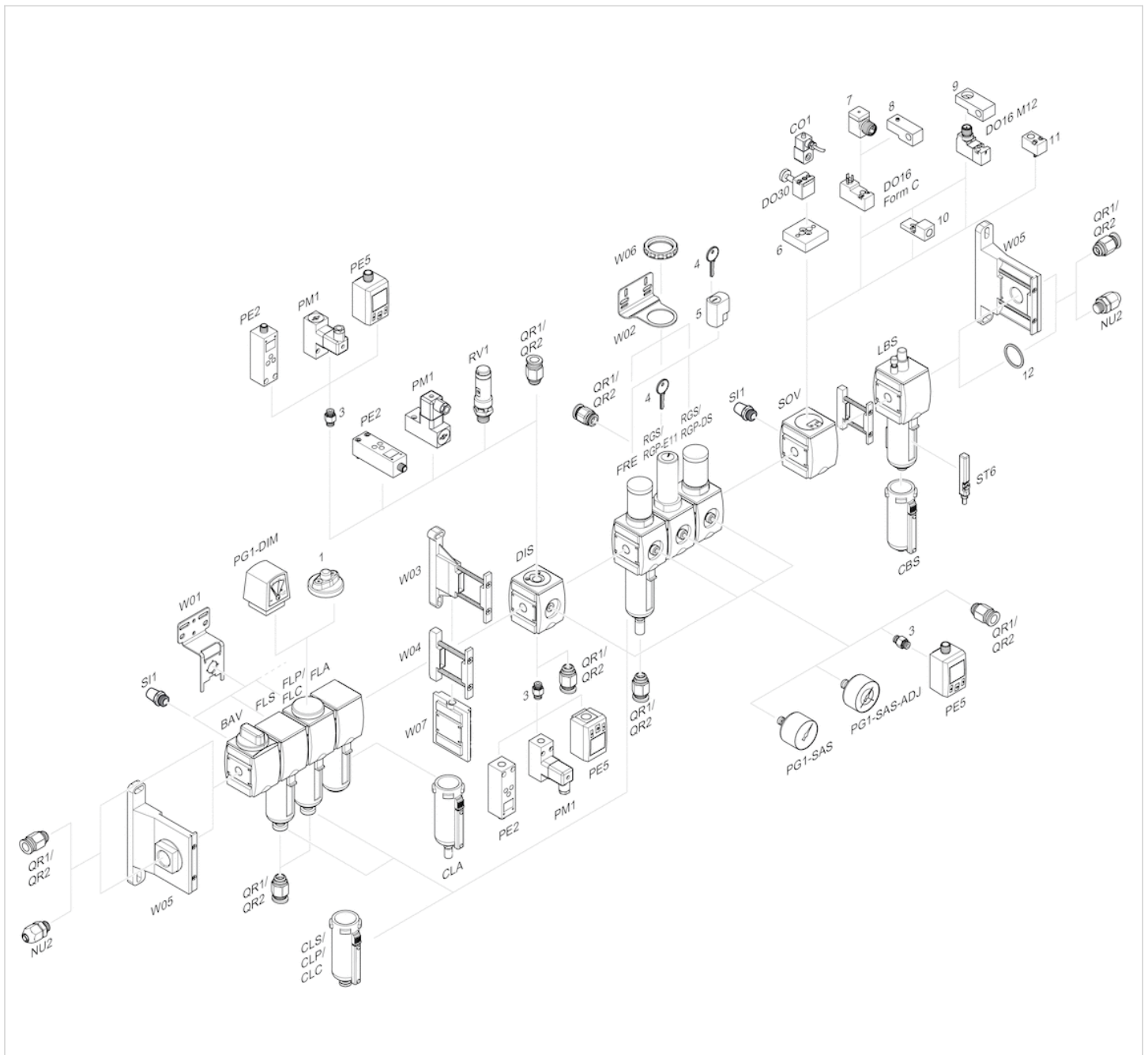


minimum pilot pressure depending on working pressure

PS = control pressure

PB= Working pressure

Accessories overview



- 1 = contamination display
- 3 = Double nipple
- 4 = Key for E11 locking
- 5 = mortise lock
- 6 = Transition plate DO30
- 7 = Adapter, Series CON-VP
- 8 = Mounting aid DO16, form C
- 9 = Mounting aid DO16, M12
- 10 = Adapter for external pilot air
- 11 = Adapter pneumatic operation
- 12 = Sealing ring

Efficient pneumatic solutions, our program: cylinders and drives, valves and valve systems, air supply management



Visit us: [Emerson.com/Aventics](https://www.emerson.com/Aventics)

Your local contact: [Emerson.com/contactus](https://www.emerson.com/contactus)



Emerson.com



Facebook.com/EmersonAutomationSolutions



LinkedIn.com/company/Emerson-Automation-Solutions



Twitter.com/EMR_Automation

An example configuration is depicted on the title page. The delivered product may thus vary from that in the illustration. Subject to change. This Document, as well as the data, specifications and other information set forth in it, are the exclusive property of AVENTICS GmbH. It may not be reproduced or given to third parties without its consent. Only use the AVENTICS products shown in industrial applications. Read the product documentation completely and carefully before using the product. Observe the applicable regulations and laws of the respective country. When integrating the product into applications, note the system manufacturer's specifications for safe use of the product. The data specified only serve to describe the product. No statements concerning a certain condition or suitability for a certain application can be derived from our information. The information given does not release the user from the obligation of own judgement and verification. It must be remembered that the products are subject to a natural process of wear and aging.

The Emerson logo is a trademark and service mark of Emerson Electric Co. Brand logotype are registered trademarks of one of the Emerson family of companies. All other marks are the property of their respective owners. © 2020 Emerson Electric Co. All rights reserved.
2020-12



CONSIDER IT SOLVED™