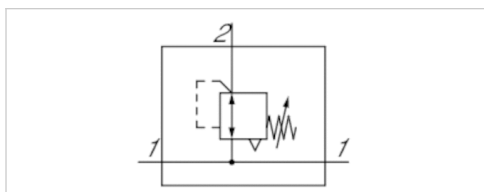


# Precision pressure regulator, Series AS2-RGP-...-DS

- G 1/4 G 3/8
- Qn = 2200-2700 l/min
- Precision pressure regulator
- Activation Mechanical
- with continuous pressure supply
- lockable
- suitable for ATEX



## Parts

Mounting orientation

Certificates

Working pressure min./max.

Ambient temperature min./max.

Medium temperature min./max.

Medium

Regulator type

Regulator function

Adjustment range min./max.

Pressure supply

Activation

Weight

Precision pressure regulator with continuous pressure supply

Any

suitable for ATEX

See table below

-10 ... 50 °C

-10 ... 50 °C

Compressed air Neutral gases

Diaphragm-type pressure regulator Can be assembled into blocks

with relieving air exhaust

See table below

double

Mechanical

0,248 kg

## Technical data

Part No.	Port	Flow	Working pressure min./max.	Adjustment range min./max.
		Qn		
R412006160	G 1/4	2200 l/min	0,1 ... 16 bar	0,1 ... 1 bar
R412006161	G 1/4	2200 l/min	0,1 ... 16 bar	0,1 ... 2 bar
R412006162	G 1/4	2200 l/min	0,2 ... 16 bar	0,2 ... 4 bar
R412006163	G 1/4	2200 l/min	0,5 ... 16 bar	0,5 ... 8 bar
R412006164	G 1/4	2200 l/min	0,5 ... 16 bar	0,5 ... 10 bar
R412006166	G 3/8	2700 l/min	0,1 ... 16 bar	0,1 ... 1 bar
R412006167	G 3/8	2700 l/min	0,1 ... 16 bar	0,1 ... 2 bar
R412006168	G 3/8	2700 l/min	0,2 ... 16 bar	0,2 ... 4 bar
R412006169	G 3/8	2700 l/min	0,5 ... 16 bar	0,5 ... 8 bar
R412006170	G 3/8	2700 l/min	0,5 ... 16 bar	0,5 ... 10 bar

Part No.	Max. pressure gauge Ø in blocked state	Fig.
R412006160	50 mm	Fig. 1
R412006161	50 mm	Fig. 1
R412006162	50 mm	Fig. 1
R412006163	50 mm	Fig. 1

Part No.	Max. pressure gauge Ø in blocked state	Fig.
R412006164	50 mm	Fig. 1
R412006166	50 mm	Fig. 2
R412006167	50 mm	Fig. 2
R412006168	50 mm	Fig. 2
R412006169	50 mm	Fig. 2
R412006170	50 mm	Fig. 2

Nominal flow Qn with secondary pressure p2 = 6 bar at  $\Delta p = 1$  bar

Order pressure gauge separately, Suitable for use in Ex zones 1, 2, 21, 22.

## Technical information

The pressure dew point must be at least 15 °C under ambient and medium temperature and may not exceed 3 °C .

The rear pressure gauge connection on the pressure regulator is closed with a blanking plug, the front connection is open. Depending on the customer application, a second blanking plug may be necessary. Please order separately (see accessories).

Suitable for use in Ex zones 1, 2, 21, 22.

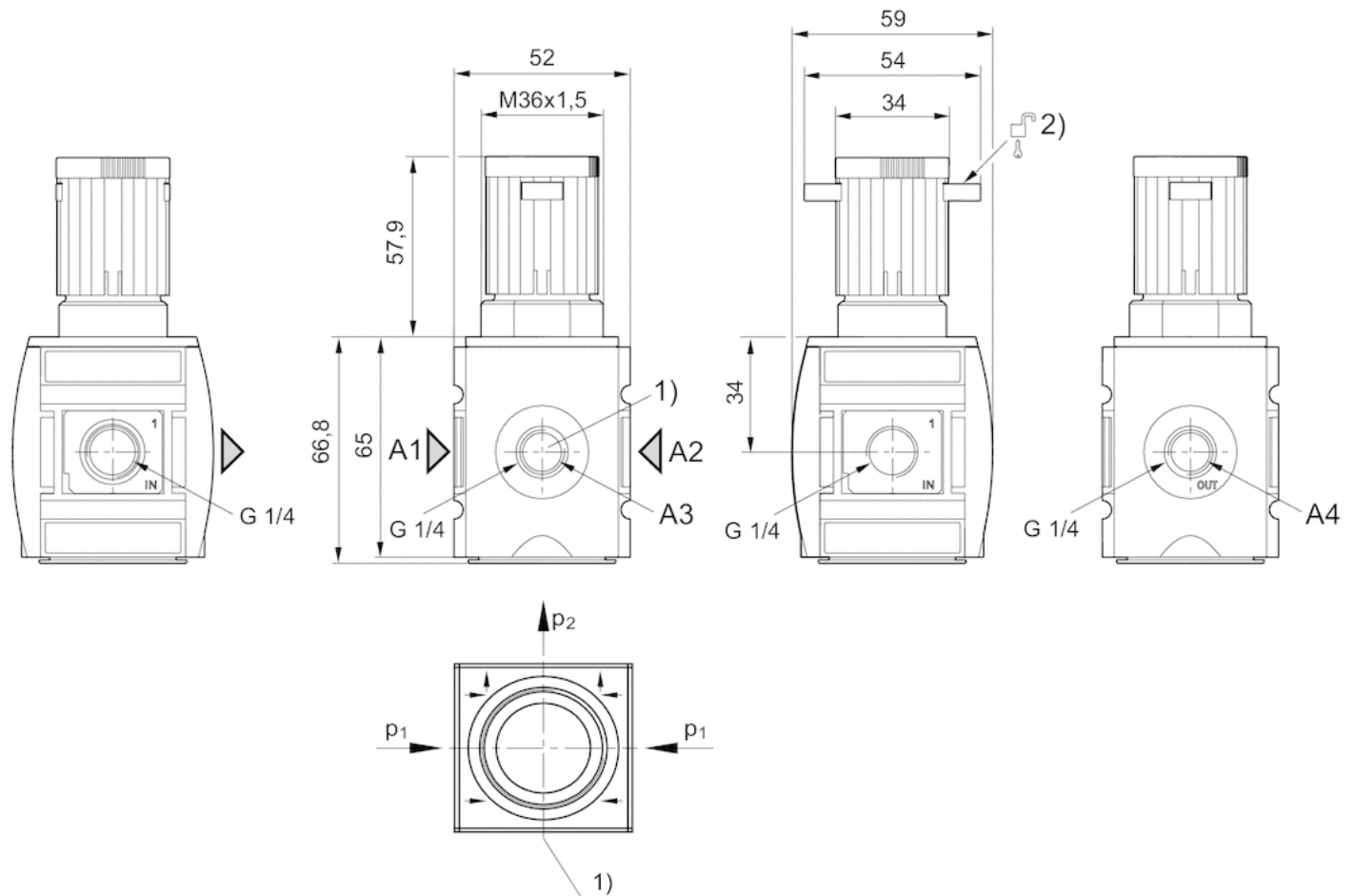
Recommended pre-filter: 5 µm

## Technical information

Material	
Housing	Polyamide
Front plate	Acrylonitrile butadiene styrene
Seals	Acrylonitrile butadiene rubber
Threaded bushing	Die cast zinc

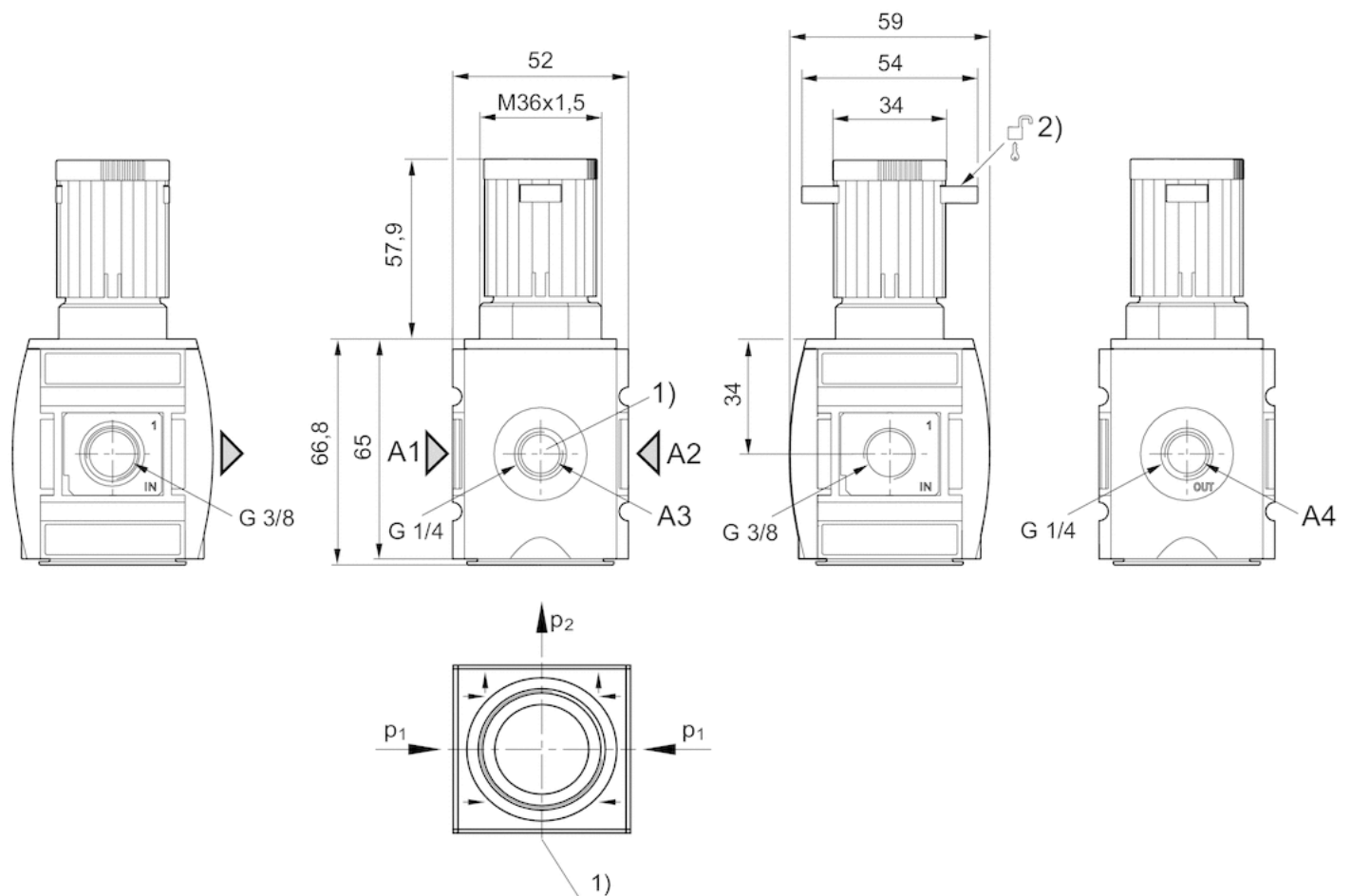
## Dimensions

Dimensions in mm, Fig. 1



- A1 = input
- A2 = output
- A3 = pressure gauge connection
- A4 = output
- 1) Pressure gauge connection
- 2) Mounting option for padlocks, max. shackle Ø 8

Dimensions in mm, Fig. 2



A1 = input

A2 = output

A3 = pressure gauge connection

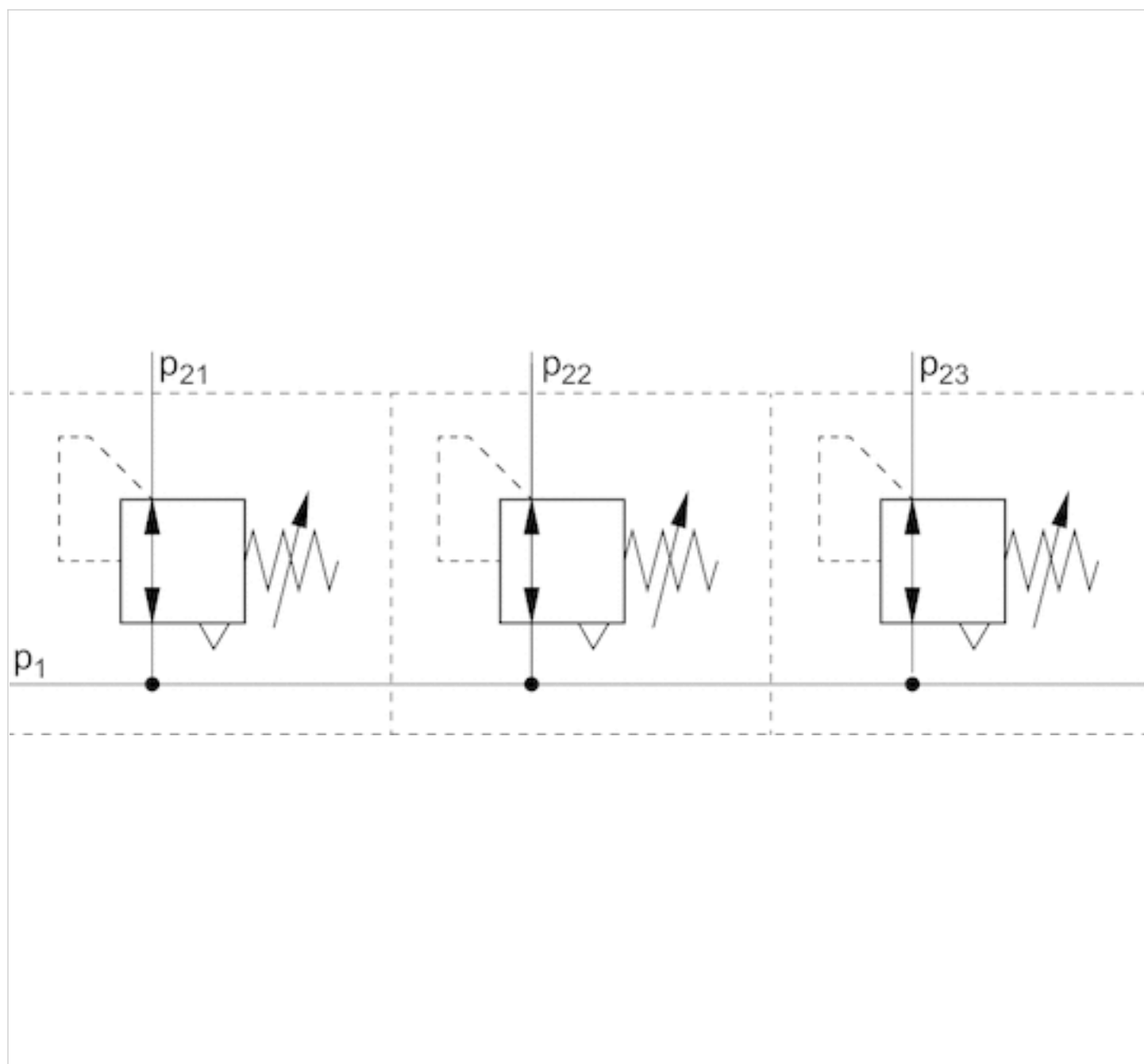
A4 = output

1) Pressure gauge connection

2) Mounting option for padlocks, max. shackle Ø 8

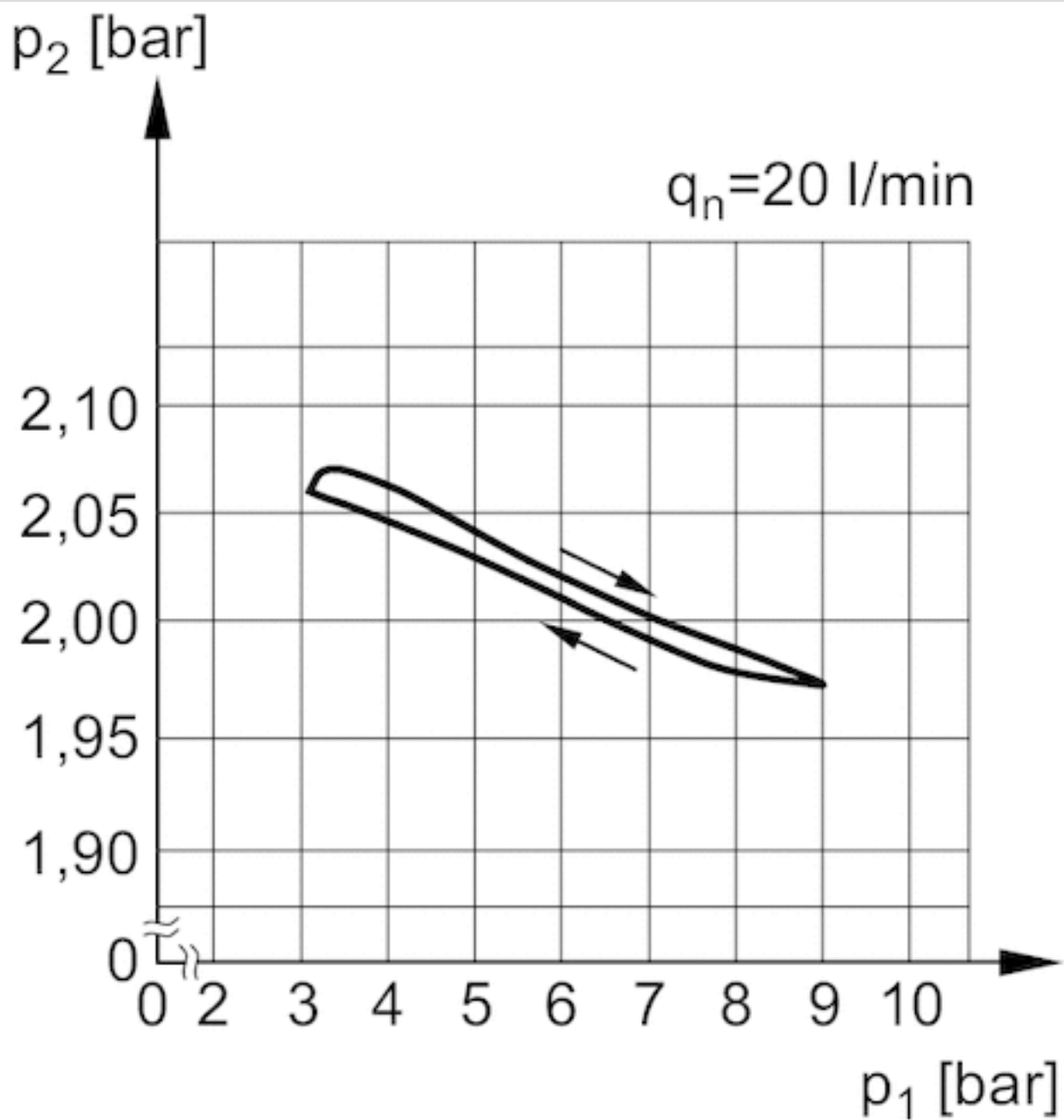
## Diagrams

### Application example

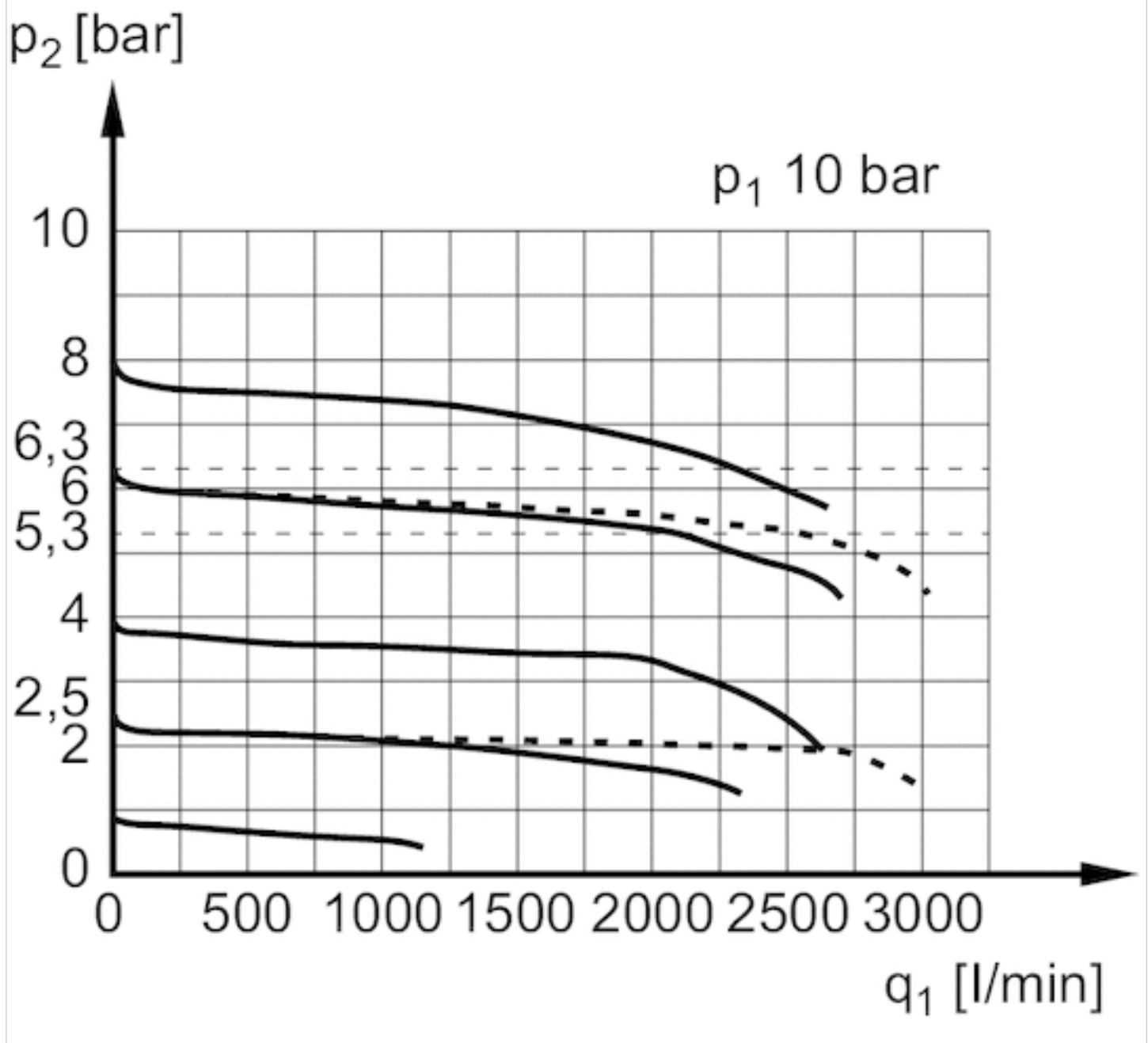


$p_1$  = working pressure

## Pressure characteristics curve

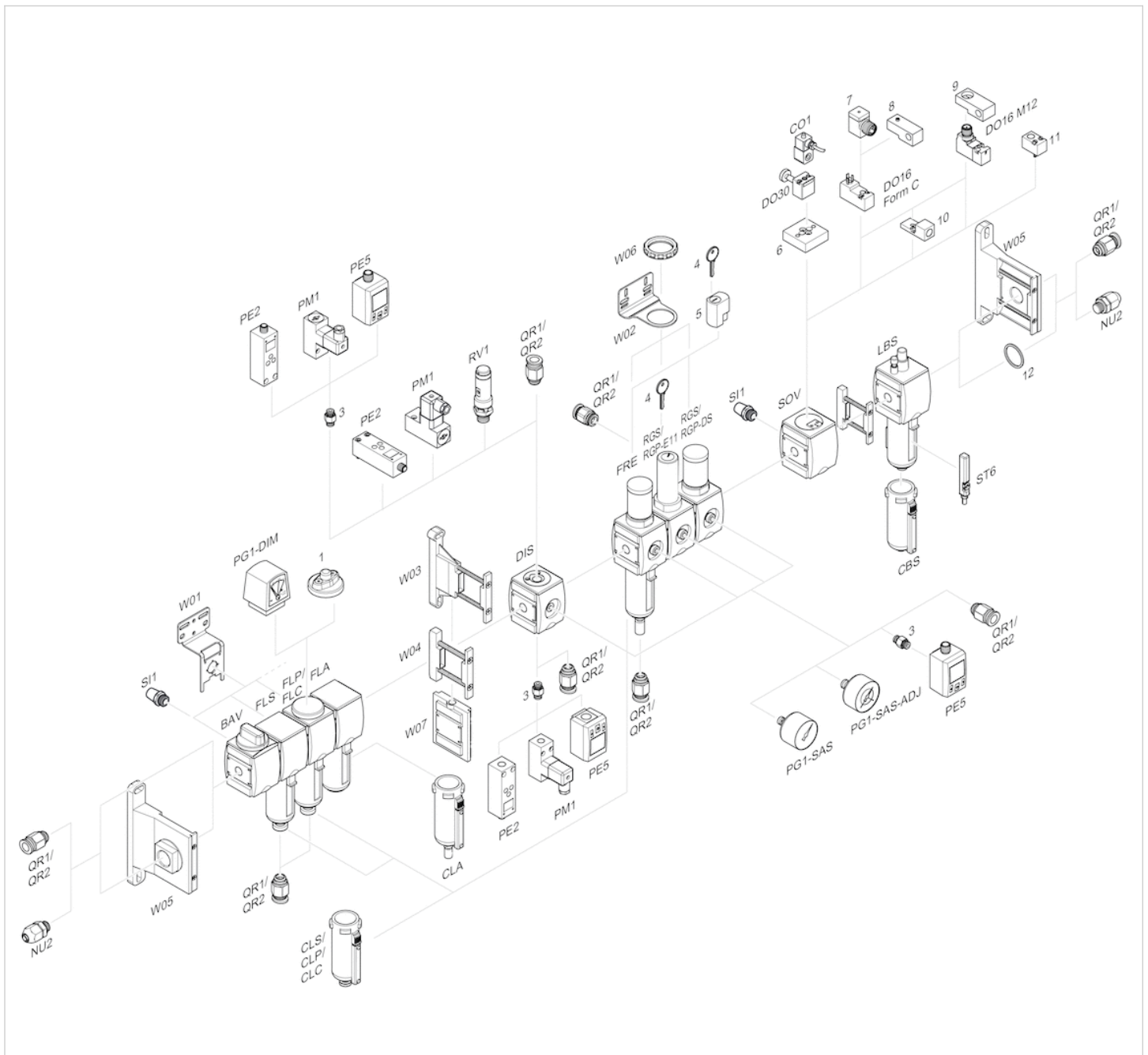


$p_1$  = Working pressure  
 $p_2$  = Secondary pressure  
 $q_n$  = Nominal flow

Flow rate characteristic (p<sub>2</sub>: 0,5 - 8 bar)

$p_1$  = Working pressure  
 $p_2$  = Secondary pressure  
 $q_n$  = Nominal flow

## Accessories overview



- 1 = contamination display
- 3 = Double nipple
- 4 = Key for E11 locking
- 5 = mortise lock
- 6 = Transition plate DO30
- 7 = Adapter, Series CON-VP
- 8 = Mounting aid DO16, form C
- 9 = Mounting aid DO16, M12
- 10 = Adapter for external pilot air
- 11 = Adapter pneumatic operation
- 12 = Sealing ring



# Efficient pneumatic solutions, our program: cylinders and drives, valves and valve systems, air supply management



Visit us: [Emerson.com/Aventics](https://www.emerson.com/Aventics)

Your local contact: [Emerson.com/contactus](https://www.emerson.com/contactus)



Emerson.com



Facebook.com/EmersonAutomationSolutions



LinkedIn.com/company/Emerson-Automation-Solutions



Twitter.com/EMR\_Automation

An example configuration is depicted on the title page. The delivered product may thus vary from that in the illustration. Subject to change. This Document, as well as the data, specifications and other information set forth in it, are the exclusive property of AVENTICS GmbH. It may not be reproduced or given to third parties without its consent. Only use the AVENTICS products shown in industrial applications. Read the product documentation completely and carefully before using the product. Observe the applicable regulations and laws of the respective country. When integrating the product into applications, note the system manufacturer's specifications for safe use of the product. The data specified only serve to describe the product. No statements concerning a certain condition or suitability for a certain application can be derived from our information. The information given does not release the user from the obligation of own judgement and verification. It must be remembered that the products are subject to a natural process of wear and aging.

The Emerson logo is a trademark and service mark of Emerson Electric Co. Brand logotype are registered trademarks of one of the Emerson family of companies. All other marks are the property of their respective owners. © 2021 Emerson Electric Co. All rights reserved.  
2021-05



## CONSIDER IT SOLVED™