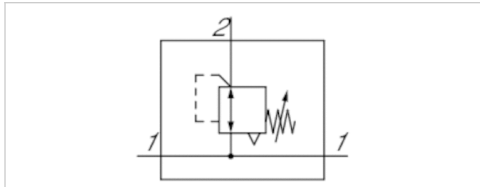


# Pressure regulator, Series AS2-RGS-...-DS

- G 1/4 G 3/8
- Qn = 2200-2700 l/min
- Standard pressure regulator
- Activation Mechanical
- with continuous pressure supply
- lockable
- for padlocks
- suitable for ATEX



## Parts

Mounting orientation

Certificates

Working pressure min./max.

Ambient temperature min./max.

Medium temperature min./max.

Medium

Regulator type

Regulator function

Adjustment range min./max.

Lock type

Pressure supply

Activation

Weight

Pressure regulator with continuous pressure supply

Any

suitable for ATEX

See table below

-10 ... 50 °C

-10 ... 50 °C

Compressed air Neutral gases

Diaphragm-type pressure regulator Can be assembled into blocks

with relieving air exhaust

See table below

for padlocks

double

Mechanical

0,248 kg

## Technical data

Part No.	Port	Flow	Working pressure min./max.	Adjustment range min./max.
		Qn		
R412006124	G 1/4	2200 l/min	0,1 ... 16 bar	0,1 ... 1 bar
R412006125	G 1/4	2200 l/min	0,1 ... 16 bar	0,1 ... 2 bar
R412006126	G 1/4	2200 l/min	0,2 ... 16 bar	0,2 ... 4 bar
R412006127	G 1/4	2200 l/min	0,5 ... 16 bar	0,5 ... 8 bar
R412006128	G 1/4	2200 l/min	0,5 ... 16 bar	0,5 ... 10 bar
R412006129	G 1/4	2200 l/min	0,5 ... 16 bar	0,5 ... 16 bar
R412006130	G 3/8	2700 l/min	0,1 ... 16 bar	0,1 ... 1 bar
R412006131	G 3/8	2700 l/min	0,1 ... 16 bar	0,1 ... 2 bar
R412006132	G 3/8	2700 l/min	0,2 ... 16 bar	0,2 ... 4 bar
R412006133	G 3/8	2700 l/min	0,5 ... 16 bar	0,5 ... 8 bar
R412006134	G 3/8	2700 l/min	0,5 ... 16 bar	0,5 ... 10 bar
R412006135	G 3/8	2700 l/min	0,5 ... 16 bar	0,5 ... 16 bar

Part No.	Max. pressure gauge Ø in blocked state	Fig.
R412006124	50 mm	Fig. 1

Part No.	Max. pressure gauge Ø in blocked state	Fig.
R412006125	50 mm	Fig. 1
R412006126	50 mm	Fig. 1
R412006127	50 mm	Fig. 1
R412006128	50 mm	Fig. 1
R412006129	50 mm	Fig. 1
R412006130	50 mm	Fig. 2
R412006131	50 mm	Fig. 2
R412006132	50 mm	Fig. 2
R412006133	50 mm	Fig. 2
R412006134	50 mm	Fig. 2
R412006135	50 mm	Fig. 2

Nominal flow  $Q_n$  with secondary pressure  $p_2 = 6$  bar at  $\Delta p = 1$  bar

Order pressure gauge separately, Suitable for use in Ex zones 1, 2, 21, 22.

## Technical information

The pressure dew point must be at least 15 °C under ambient and medium temperature and may not exceed 3 °C .

The rear pressure gauge connection on the pressure regulator is closed with a blanking plug, the front connection is open. Depending on the customer application, a second blanking plug may be necessary. Please order separately (see accessories).

Suitable for use in Ex zones 1, 2, 21, 22.

Relieving exhaust ( $\leq 0.3$  bar over set pressure).

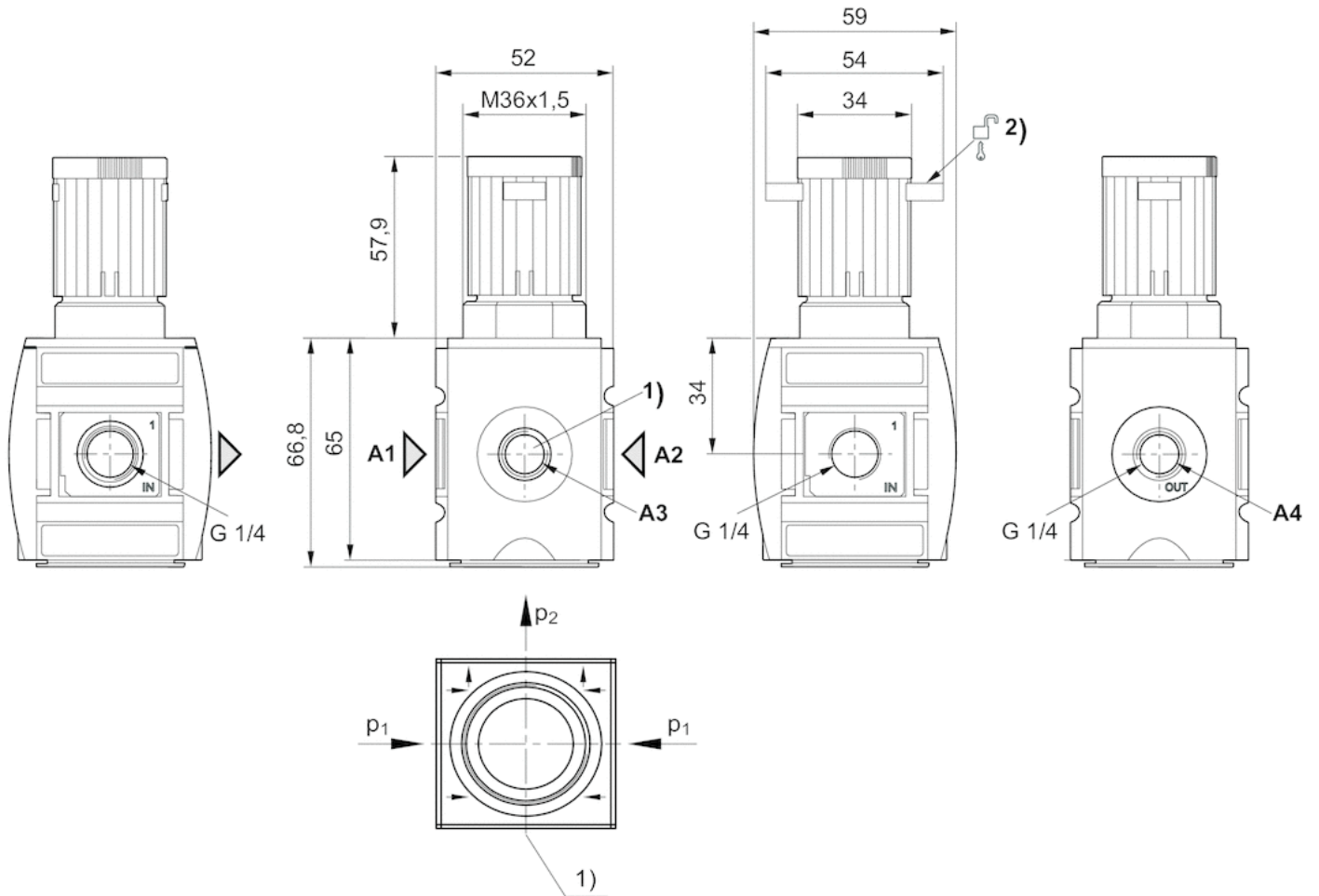
With rear exhaust ( $> 3$  bar ).

## Technical information

Material	
Housing	Polyamide
Front plate	Acrylonitrile butadiene styrene
Seals	Acrylonitrile butadiene rubber
Threaded bushing	Die cast zinc

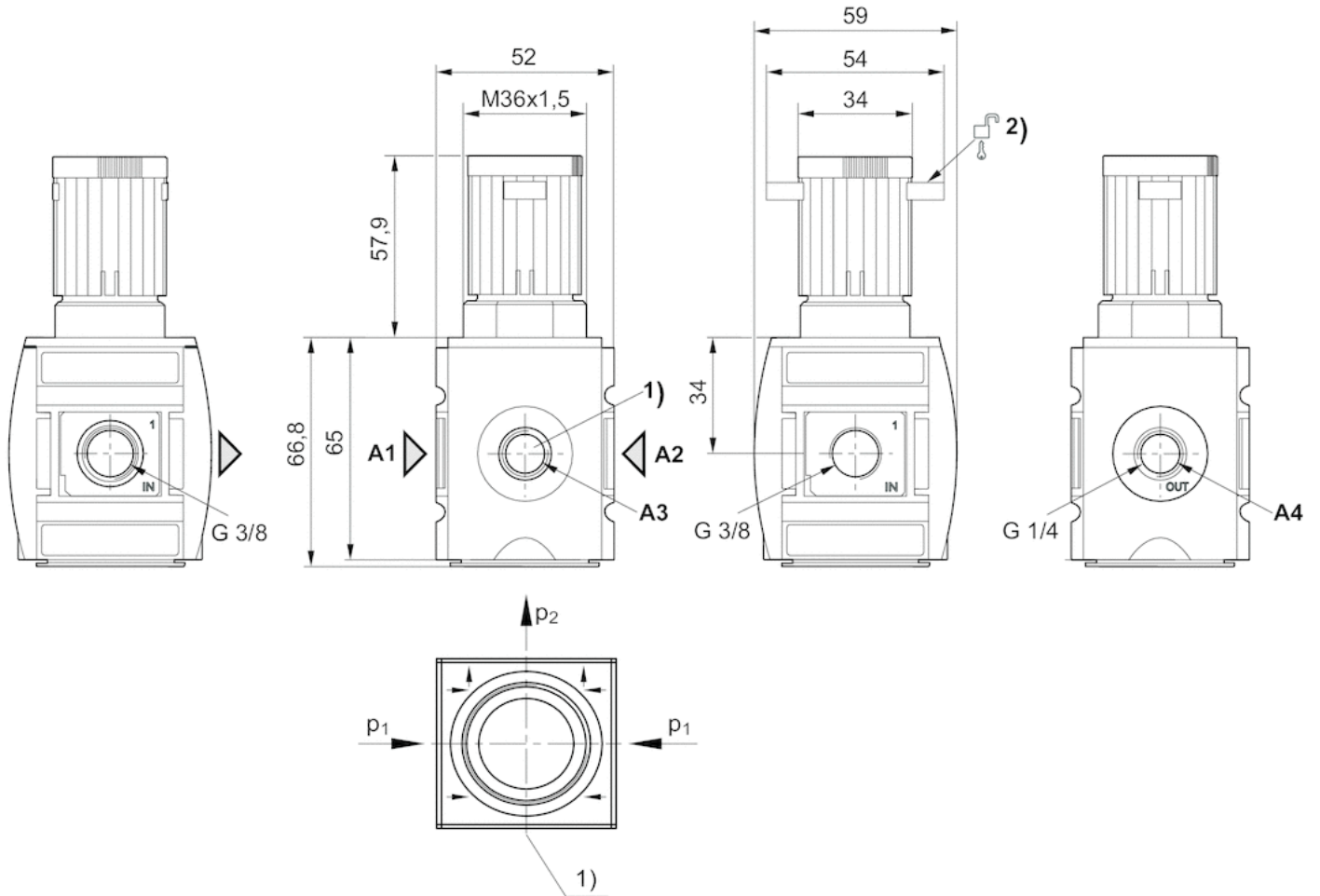
## Dimensions

Dimensions in mm, Fig. 1



- A1 = input
- A2 = output
- A3 = pressure gauge connection
- A4 = output
- 1) Pressure gauge connection
- 2) Mounting option for padlocks, max. shackle Ø 8

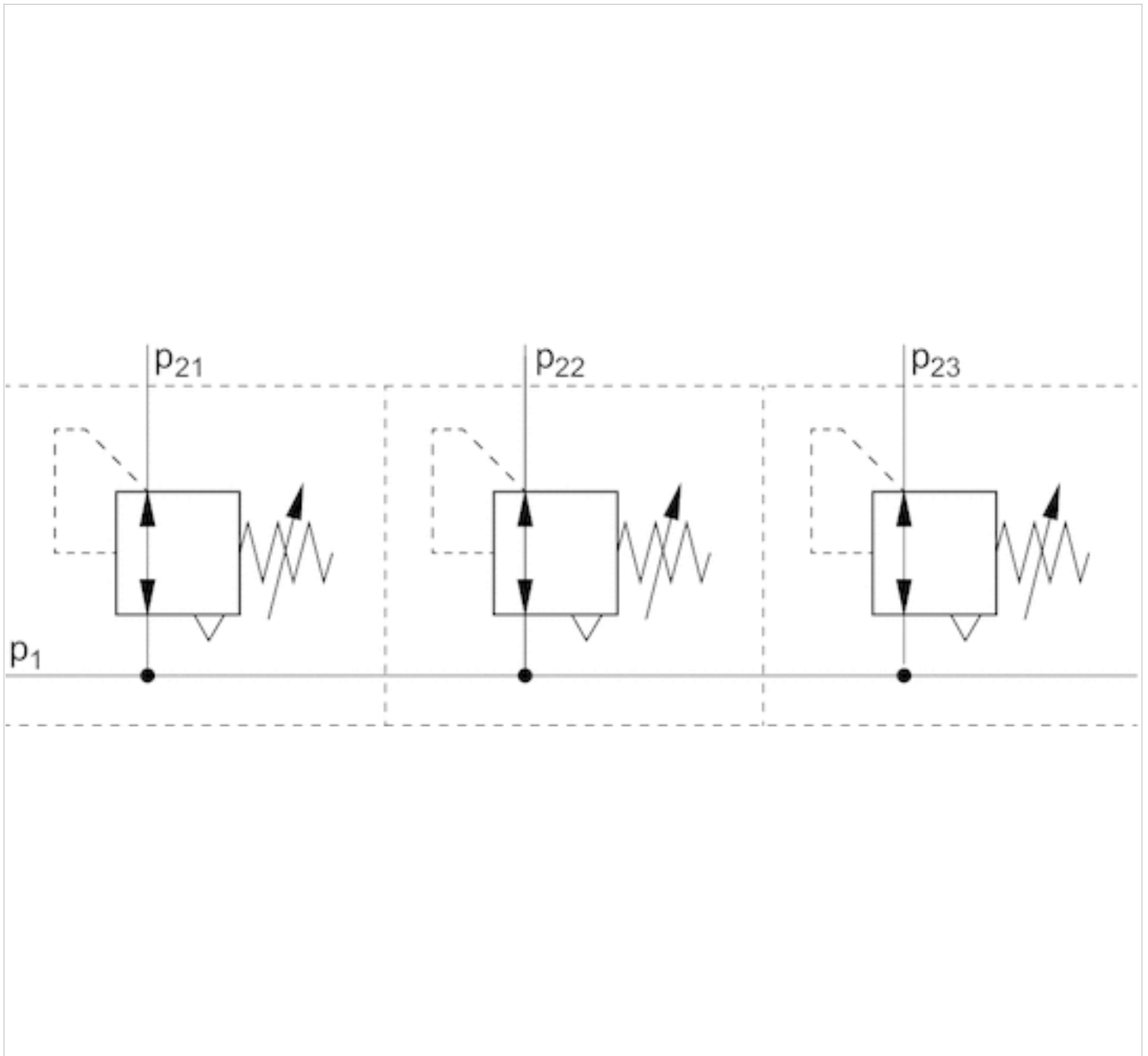
Dimensions in mm, Fig. 2



- A1 = input
- A2 = output
- A3 = pressure gauge connection
- A4 = output
- 1) Pressure gauge connection
- 2) Mounting option for padlocks, max. shackle Ø 8

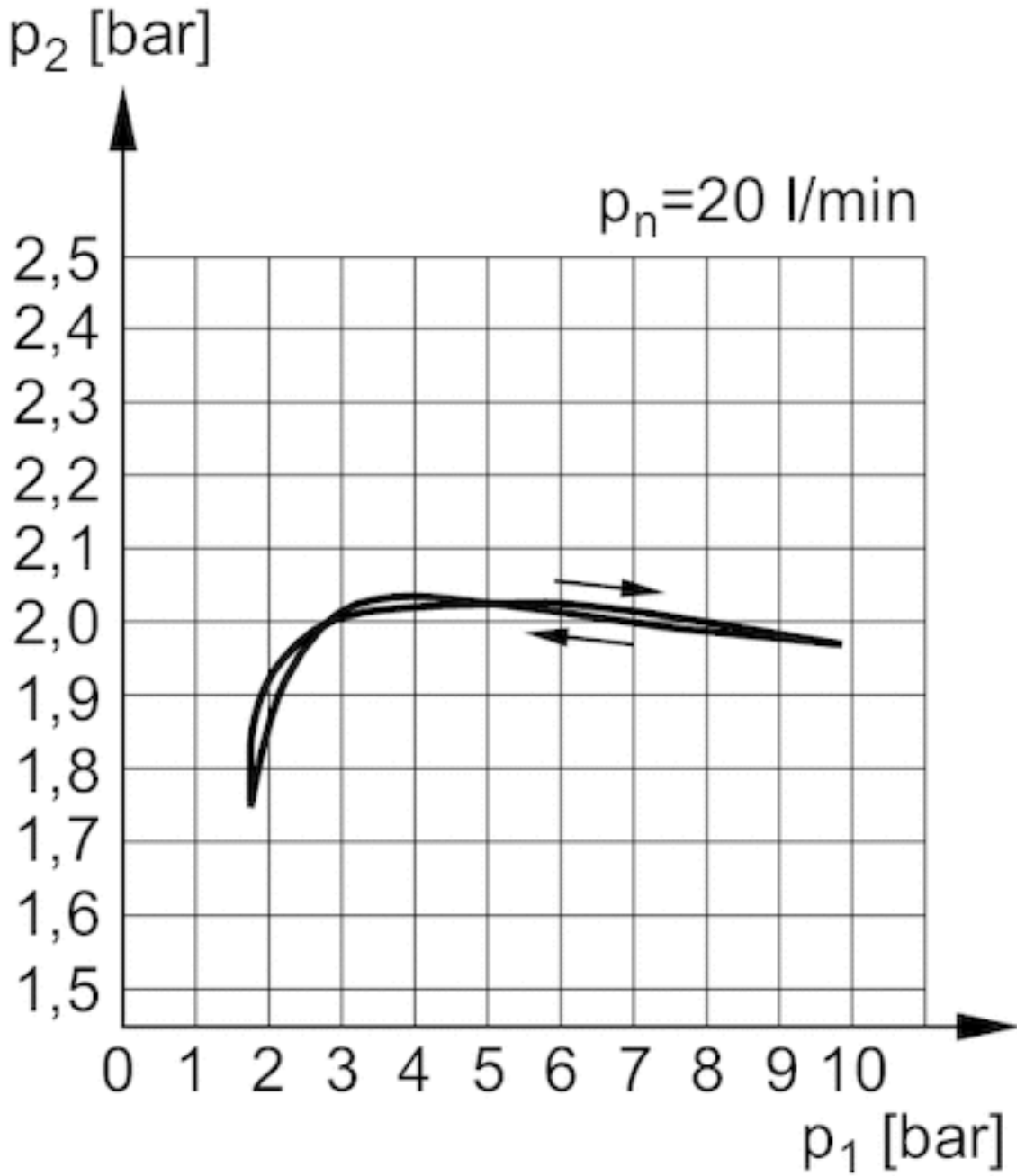
# Diagrams

## Application example



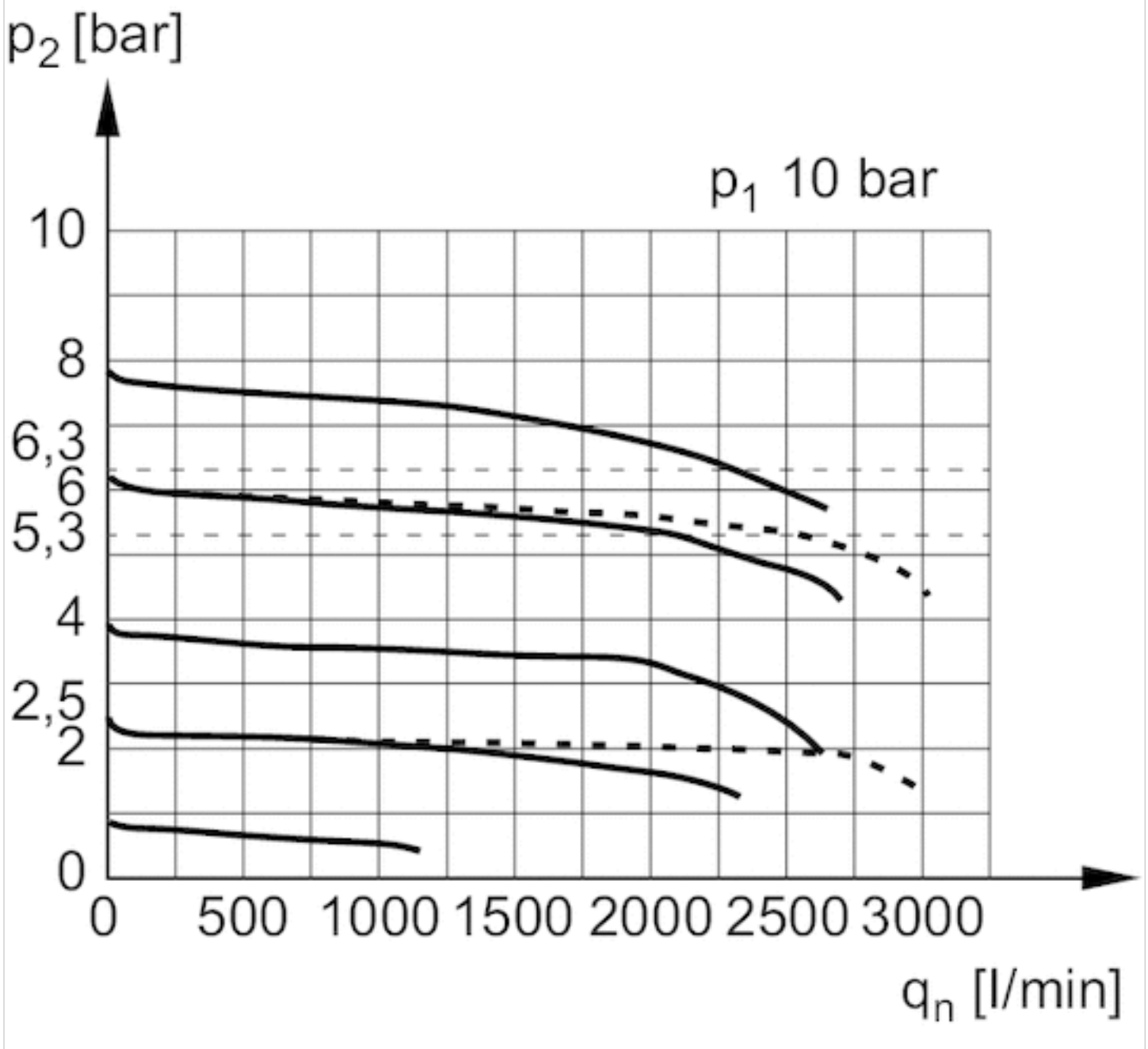
$p_1$  = working pressure

Pressure characteristics curve



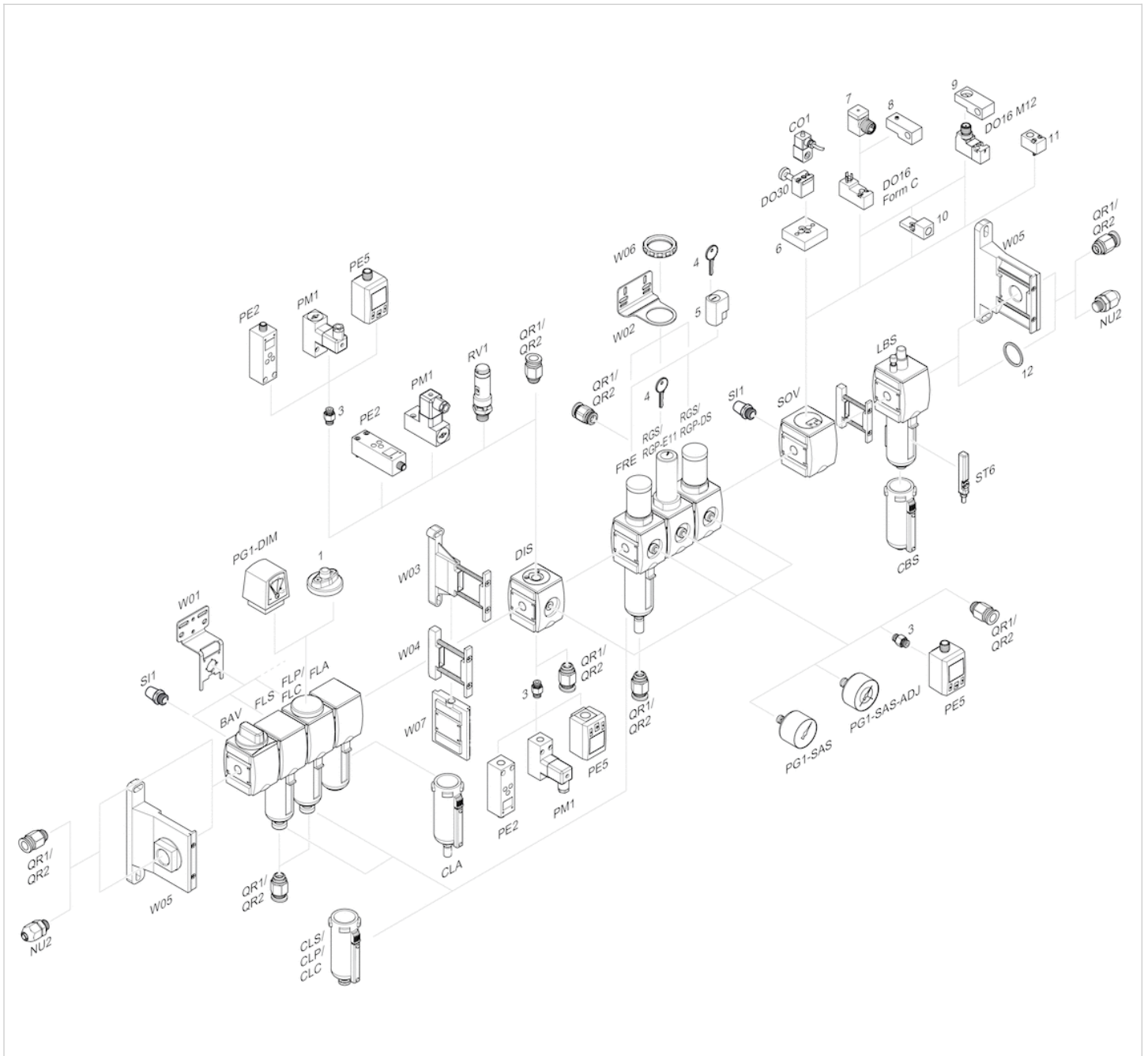
$p_1$  = Working pressure  
 $p_2$  = Secondary pressure  
 $p_n$  = Nominal flow

Flow rate characteristic p<sub>2</sub>: 0,5 - 10 bar



p<sub>1</sub> = Working pressure  
 p<sub>2</sub> = Secondary pressure  
 q<sub>n</sub> = Nominal flow

# Accessories overview



- 1 = contamination display
- 3 = Double nipple
- 4 = Key for E11 locking
- 5 = mortise lock
- 6 = Transition plate DO30
- 7 = Adapter, Series CON-VP
- 8 = Mounting aid DO16, form C
- 9 = Mounting aid DO16, M12
- 10 = Adapter for external pilot air
- 11 = Adapter pneumatic operation
- 12 = Sealing ring



# Efficient pneumatic solutions, our program: cylinders and drives, valves and valve systems, air supply management



Visit us: [Emerson.com/Aventics](https://www.emerson.com/Aventics)

Your local contact: [Emerson.com/contactus](https://www.emerson.com/contactus)



[Emerson.com](https://www.emerson.com)



[Facebook.com/EmersonAutomationSolutions](https://www.facebook.com/EmersonAutomationSolutions)



[LinkedIn.com/company/Emerson-Automation-Solutions](https://www.linkedin.com/company/Emerson-Automation-Solutions)



[Twitter.com/EMR\\_Automation](https://twitter.com/EMR_Automation)

An example configuration is depicted on the title page. The delivered product may thus vary from that in the illustration. Subject to change. This Document, as well as the data, specifications and other information set forth in it, are the exclusive property of AVENTICS GmbH. It may not be reproduced or given to third parties without its consent. Only use the AVENTICS products shown in industrial applications. Read the product documentation completely and carefully before using the product. Observe the applicable regulations and laws of the respective country. When integrating the product into applications, note the system manufacturer's specifications for safe use of the product. The data specified only serve to describe the product. No statements concerning a certain condition or suitability for a certain application can be derived from our information. The information given does not release the user from the obligation of own judgement and verification. It must be remembered that the products are subject to a natural process of wear and aging.

The Emerson logo is a trademark and service mark of Emerson Electric Co. Brand logotype are registered trademarks of one of the Emerson family of companies. All other marks are the property of their respective owners. © 2020 Emerson Electric Co. All rights reserved.  
2020-12



**CONSIDER IT SOLVED™**