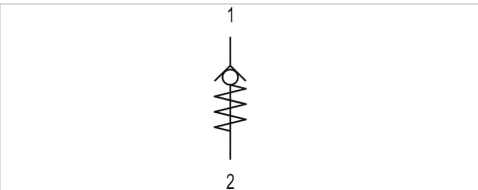


Non-return valve, Series QR1-SKR

- Qn 1►2 = 280-2000 l/min
- push-in fitting
- Ø 4 Ø 6 Ø 8 Ø 10 Ø 12
- push-in fitting
- Ø 4 Ø 6 Ø 8 Ø 10 Ø 12



Type	Poppet valve
Working pressure min./max.	0,8 ... 10 bar
Ambient temperature min./max.	0 ... 60 °C
Medium temperature min./max.	0 ... 60 °C
Weight	See table below

Technical data

Part No.	Port 1	Port 2	Flow	Housing material	Delivery unit	Weight
			Qn 1►2			
R412005573	Ø 4	Ø 4	280 l/min	Polybutyleneterephthalate	5 piece	0,006 kg
R412005574	Ø 6	Ø 6	600 l/min	Polybutyleneterephthalate	5 piece	0,009 kg
R412005575	Ø 8	Ø 8	1800 l/min	Polybutyleneterephthalate	5 piece	0,014 kg
R412005576	Ø 10	Ø 10	1800 l/min	Aluminum	2 piece	0,018 kg
R412005577	Ø 12	Ø 12	2000 l/min	Aluminum	2 piece	0,033 kg

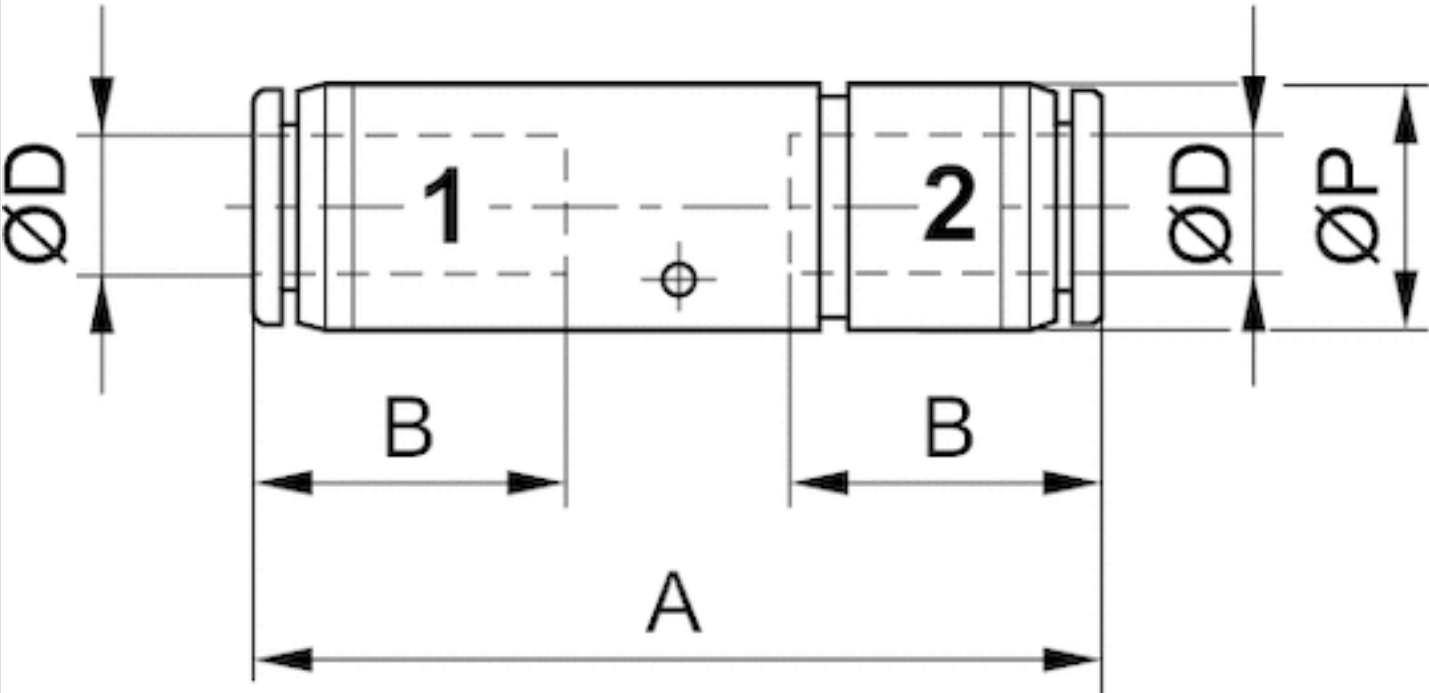
Nominal flow Qn at 6 bar and Δp = 1 bar

Technical information

Material	
Housing	Polybutyleneterephthalate Aluminum
Seals	Acrylonitrile butadiene rubber

Dimensions

Dimensions



Dimensions

Part No.	Ø D	Ø D	A	B	Ø P
R412005573	Ø 4	Ø 4	41.1	16	10
R412005574	Ø 6	Ø 6	47.2	17	12.4
R412005575	Ø 8	Ø 8	51.6	18.5	14.4
R412005576	Ø 10	Ø 10	77.3	21	25
R412005577	Ø 12	Ø 12	80	22.5	25

Efficient pneumatic solutions, our program: cylinders and drives, valves and valve systems, air supply management



Visit us: [Emerson.com/Aventics](https://emerson.com/aventics)

Your local contact: [Emerson.com/contactus](https://emerson.com/contactus)



Emerson.com



Facebook.com/EmersonAutomationSolutions



LinkedIn.com/company/Emerson-Automation-Solutions



Twitter.com/EMR_Automation

An example configuration is depicted on the title page. The delivered product may thus vary from that in the illustration. Subject to change. This Document, as well as the data, specifications and other information set forth in it, are the exclusive property of AVENTICS GmbH. It may not be reproduced or given to third parties without its consent. Only use the AVENTICS products shown in industrial applications. Read the product documentation completely and carefully before using the product. Observe the applicable regulations and laws of the respective country. When integrating the product into applications, note the system manufacturer's specifications for safe use of the product. The data specified only serve to describe the product. No statements concerning a certain condition or suitability for a certain application can be derived from our information. The information given does not release the user from the obligation of own judgement and verification. It must be remembered that the products are subject to a natural process of wear and aging.

The Emerson logo is a trademark and service mark of Emerson Electric Co. Brand logotype are registered trademarks of one of the Emerson family of companies. All other marks are the property of their respective owners. © 2020 Emerson Electric Co. All rights reserved.
2020-12



CONSIDER IT SOLVED™