

# Pressure regulator for horizontal stacking

- type B
- $Q_n 1 \rightarrow 2 = 2100 \text{ l/min}$
- Actuating element Screw with wrench flats Slotted screw
- Base plate connection push-in fitting
- Poppet valve



## Type

### Certificates

Working pressure min./max.

Adjustment range min./max.

Ambient temperature min./max.

Medium temperature min./max.

Medium

Max. particle size

Oil content of compressed air

Weight

Poppet valve

Free of substances that impair surface wetting in the coating process

2 ... 10 bar

0,8 ... 8 bar

-15 ... 50 °C

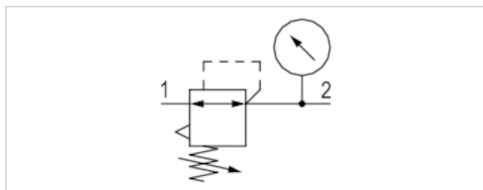
-15 ... 50 °C

Compressed air

50 µm

0 ... 1 mg/m<sup>3</sup>

See table below



## Technical data

Part No.	Compressed air connection Input	Compressed air connection type Input
5750020000	Special base plate Ø 12	Base plate connection push-in fitting
R412003769	Special base plate Ø 12	Base plate connection push-in fitting

Part No.	Compressed air connection Gauge port	Flow	Actuating element	Weight
		$Q_n 1 \rightarrow 2$		
5750020000	Ø 6x1	2100 l/min	Screw with wrench flats	0,23 kg
R412003769	Ø 6x1	2100 l/min	Slotted screw	0,2 kg

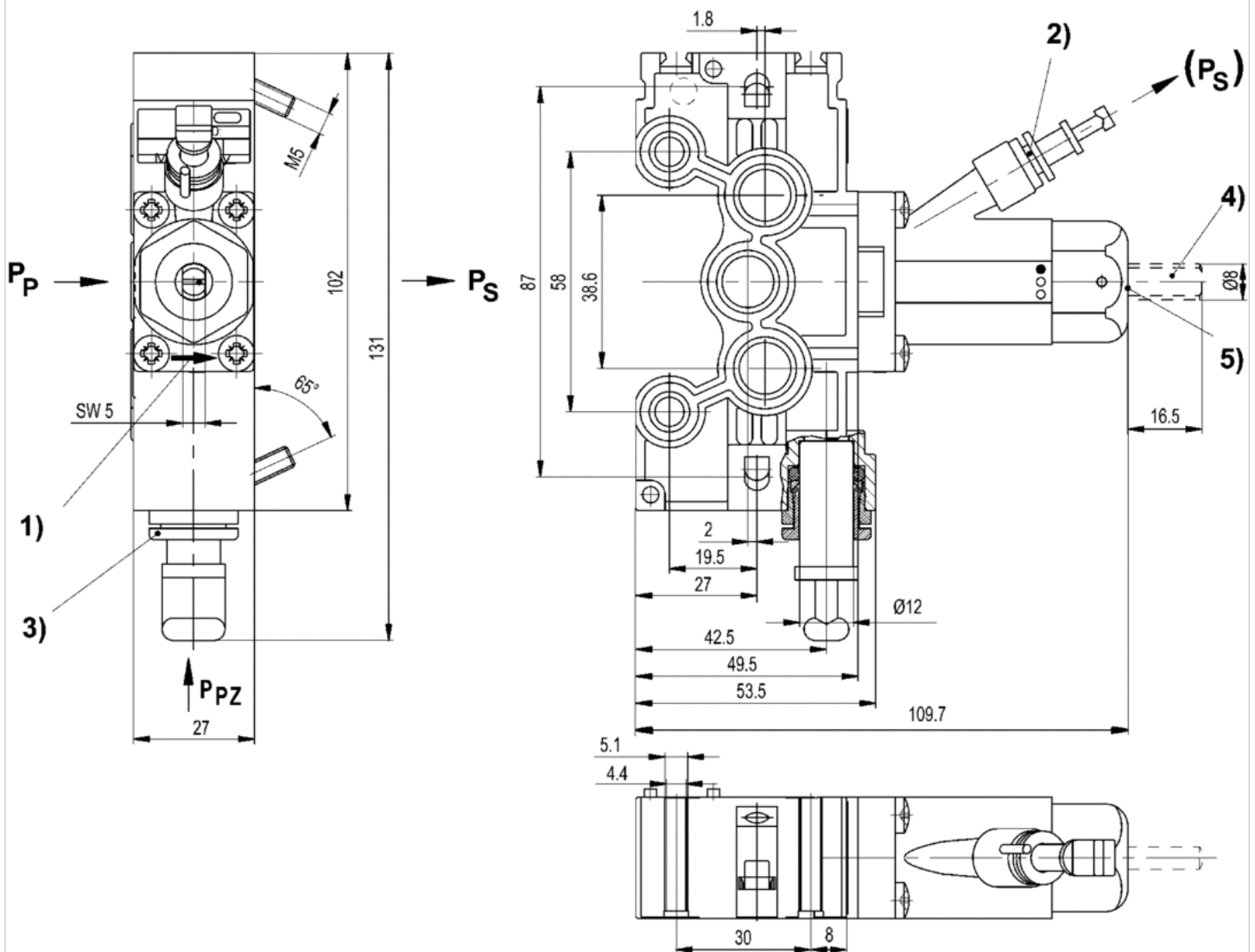
Nominal flow  $Q_n$  at 6 bar and  $\Delta p = 2$  bar, Scope of delivery incl. seal and mounting screws, Order pressure gauge separately

## Technical information

Material	
Housing	Polyamide fiber-glass reinforced Polyoxymethylene
Seals	Acrylonitrile butadiene rubber

## Dimensions

### Dimensions



1) Flow direction

2) Push-in fitting  $\varnothing 6 \times 1$  (for gauge)

3) Additional pressure feed possible (push-in fitting  $\varnothing 12$ )

$P_p$  primary pressure  $P_s$  secondary pressure  $P_{pz}$  additional primary pressure supply

4) activation with key SW 5

5) activation with screwdriver

# Efficient pneumatic solutions, our program: cylinders and drives, valves and valve systems, air supply management



Visit us: [Emerson.com/Aventics](https://www.emerson.com/Aventics)

Your local contact: [Emerson.com/contactus](https://www.emerson.com/contactus)



Emerson.com



Facebook.com/EmersonAutomationSolutions



LinkedIn.com/company/Emerson-Automation-Solutions



Twitter.com/EMR\_Automation

An example configuration is depicted on the title page. The delivered product may thus vary from that in the illustration. Subject to change. This Document, as well as the data, specifications and other information set forth in it, are the exclusive property of AVENTICS GmbH. It may not be reproduced or given to third parties without its consent. Only use the AVENTICS products shown in industrial applications. Read the product documentation completely and carefully before using the product. Observe the applicable regulations and laws of the respective country. When integrating the product into applications, note the system manufacturer's specifications for safe use of the product. The data specified only serve to describe the product. No statements concerning a certain condition or suitability for a certain application can be derived from our information. The information given does not release the user from the obligation of own judgement and verification. It must be remembered that the products are subject to a natural process of wear and aging.

The Emerson logo is a trademark and service mark of Emerson Electric Co. Brand logotype are registered trademarks of one of the Emerson family of companies. All other marks are the property of their respective owners. © 2020 Emerson Electric Co. All rights reserved.  
2020-12



## CONSIDER IT SOLVED™