

Series MS01

- MS01-PA test block, variant II, with 5/2-directional valve
- subbase made of Polyamide fiber-glass reinforced
- permanent cleaning pressure



Grid dimension	27 mm
Standards	ISO 15407-1 26 mm
Working pressure min./max.	4 ... 10 bar
Ambient temperature min./max.	0 ... 50 °C
Medium temperature min./max.	0 ... 50 °C
Medium	Compressed air
Max. particle size	5 µm
Oil content of compressed air	0 ... 0,1 mg/m ³
DC operating voltage	24 V
Voltage tolerance DC	-10% / +10%
Protection class With valve plug connector	IP65
Duty cycle	100 %
Electrical connection for valve	Plug, form C
Electr. connection	Plug, M12, 5-pin
Valve voltage tolerance	-10% / +10%
Weight	See table below

Technical data

Part No.	Version	port pneumatic	input 1	Exhaust R1	Output 4	pilot control R2 exhaust
R412003461	1x	according to ISO 228-1	G 1/4	G 1/8	Ø 6x1	G 1/8
R412003462	2x	according to ISO 228-1	G 1/4	G 1/8	Ø 6x1	G 1/8
R412003463	3x	according to ISO 228-1	G 1/4	G 1/8	Ø 6x1	G 1/8
R412003464	4x	according to ISO 228-1	G 1/4	G 1/8	Ø 6x1	G 1/8
R412003465	5x	according to ISO 228-1	G 1/4	G 1/8	Ø 6x1	G 1/8
R412003466	6x	according to ISO 228-1	G 1/4	G 1/8	Ø 6x1	G 1/8
R412011212	7x	according to ISO 228-1	G 1/4	G 1/8	Ø 6x1	G 1/8
R412011213	8x	according to ISO 228-1	G 1/4	G 1/8	Ø 6x1	G 1/8

Part No.	Min./max. detection distance	Length	Weight
R412003461	0,01 ... 0,3 mm	88 mm	1,52 kg
R412003462	0,01 ... 0,3 mm	115 mm	1,93 kg
R412003463	0,01 ... 0,3 mm	142 mm	2,34 kg
R412003464	0,01 ... 0,3 mm	169 mm	2,76 kg
R412003465	0,01 ... 0,3 mm	196 mm	3,17 kg
R412003466	0,01 ... 0,3 mm	223 mm	3,58 kg
R412011212	0,01 ... 0,3 mm	250 mm	3,99 kg
R412011213	0,01 ... 0,3 mm	277 mm	4,4 kg

The detection distance is based on one measuring point per test module and depends on the operating conditions. For more information, see operating instructions.

Technical information

The pressure dew point must be at least 15 °C under ambient and medium temperature and may not exceed 3 °C .

The oil content of compressed air must remain constant during the life cycle.

Use only the approved oils from AVENTICS. Further information can be found in the “Technical information” document (available in the MediaCentre).

The pressure regulator is preset at 3 bar .

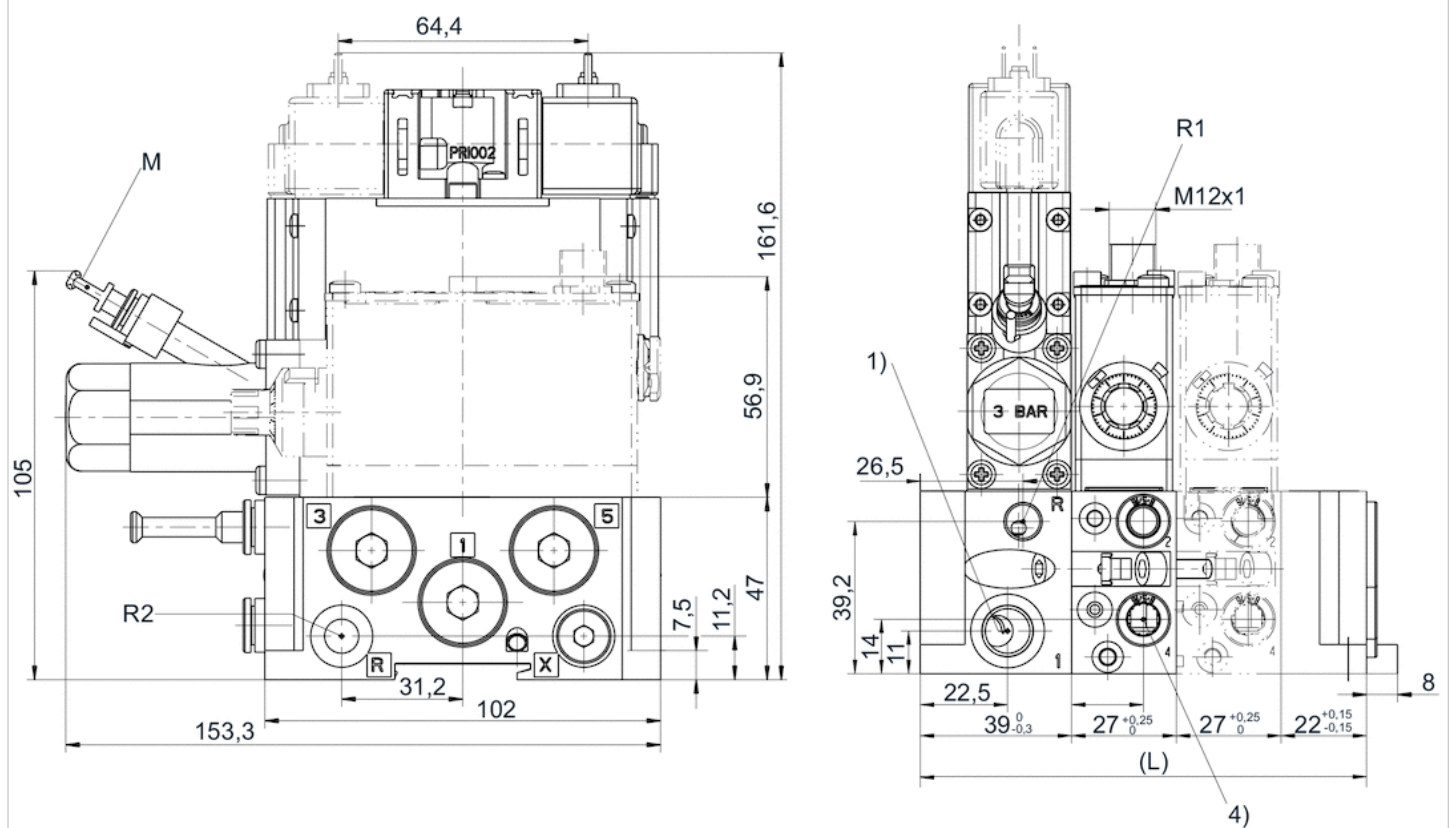
Expansion options available for pilot valves.

Technical information

Material	
End plates	Aluminum
Seal	Acrylonitrile butadiene rubber
Subbase	Polyamide fiber-glass reinforced

Dimensions

Dimensions



1) Operating pressure

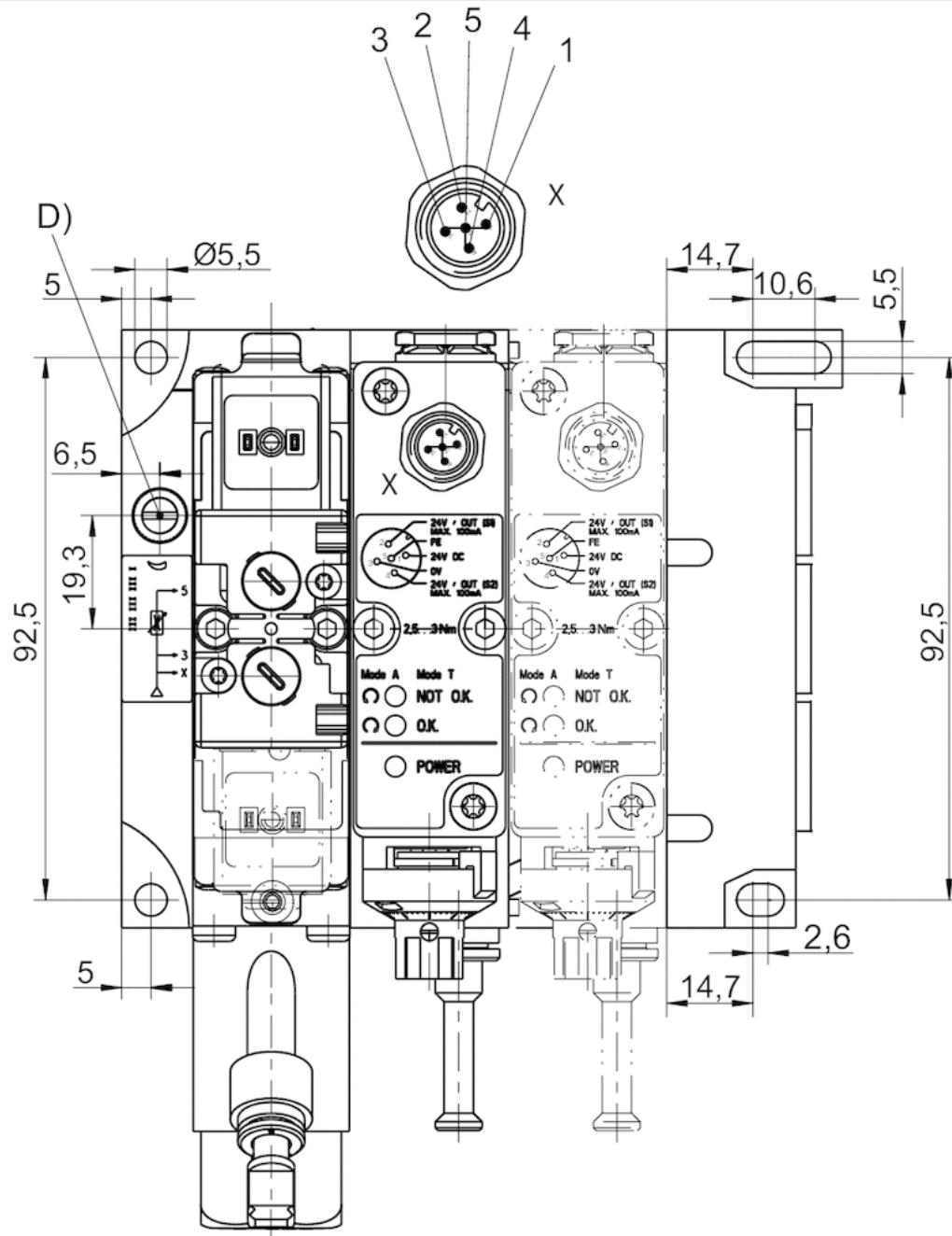
4) Port 4 (to nozzle)

R1) Test module exhaust/sealing air connection (max. 1 bar)

R2) Pilot control exhaust

M) Push-in fitting for plastic tubing Ø 6x1 of the pressure gauge

L = length



D = Throttle (cleaning pressure)

M12 contact assignment:

contact 1: 24 V DC

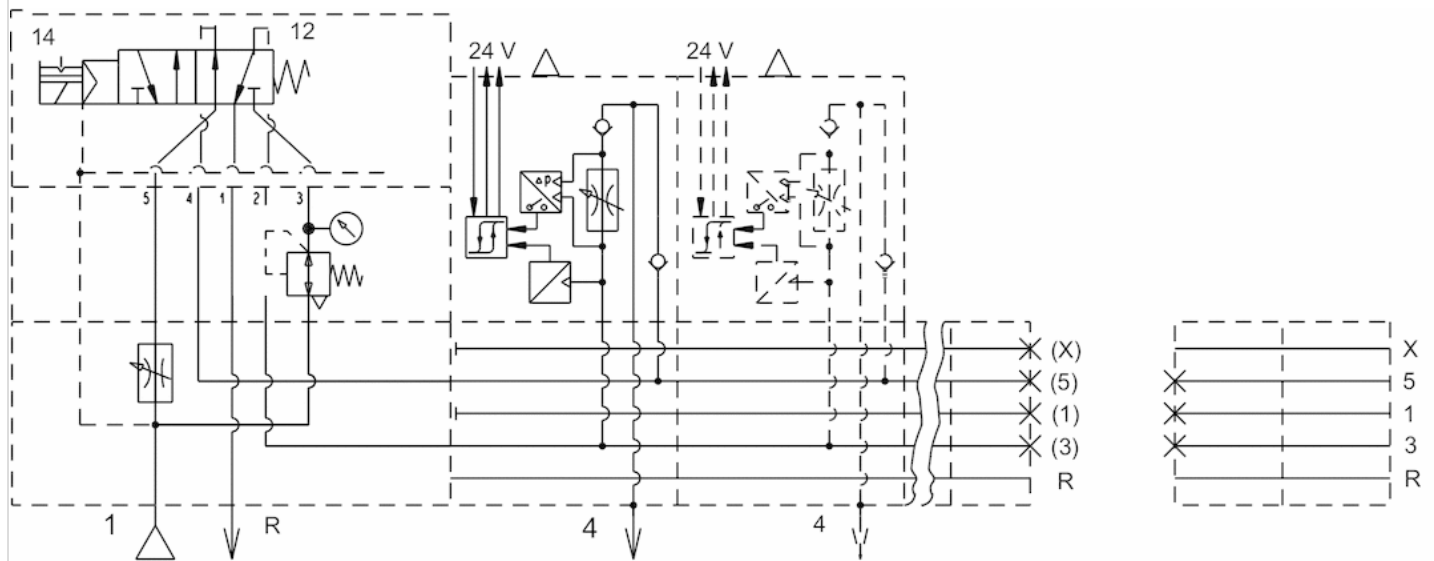
contact 2: output signal 24 V DC, S1 (working pressure), max. 100 mA

contact 3: 0 V

contact 4: output signal 24 V DC, S2 (testing), max. 100 mA

contact 5: FE

Circuit diagram



Valve side 14: test pressure

Port 4: connection nozzle

valve side 12: cleaning pressure

port R: exhaust (see dimensions for R1 and R2)

Efficient pneumatic solutions, our program: cylinders and drives, valves and valve systems, air supply management



Visit us: [Emerson.com/Aventics](https://www.emerson.com/Aventics)

Your local contact: [Emerson.com/contactus](https://www.emerson.com/contactus)



Emerson.com



Facebook.com/EmersonAutomationSolutions



LinkedIn.com/company/Emerson-Automation-Solutions



Twitter.com/EMR_Automation

An example configuration is depicted on the title page. The delivered product may thus vary from that in the illustration. Subject to change. This Document, as well as the data, specifications and other information set forth in it, are the exclusive property of AVENTICS GmbH. It may not be reproduced or given to third parties without its consent. Only use the AVENTICS products shown in industrial applications. Read the product documentation completely and carefully before using the product. Observe the applicable regulations and laws of the respective country. When integrating the product into applications, note the system manufacturer's specifications for safe use of the product. The data specified only serve to describe the product. No statements concerning a certain condition or suitability for a certain application can be derived from our information. The information given does not release the user from the obligation of own judgement and verification. It must be remembered that the products are subject to a natural process of wear and aging.

The Emerson logo is a trademark and service mark of Emerson Electric Co. Brand logotype are registered trademarks of one of the Emerson family of companies. All other marks are the property of their respective owners. © 2020 Emerson Electric Co. All rights reserved.
2020-12



CONSIDER IT SOLVED™