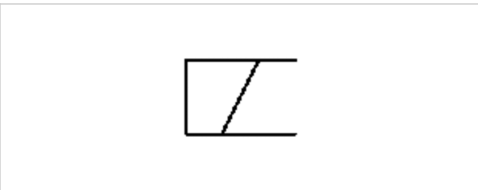


Coil, series CO1

- With valve plug connector
- Coil width 30 mm
- Power consumption DC 2.1 W
- Holding power AC 4.1 VA
- Switch-on power AC 4.1 VA
- ATEX



Certificates	ATEX
ATEX class G	II 3G Ex nA IIC T4 Gc X
ATEX class D	II 3D Ex tc IIIC T125°C Dc X
Ambient temperature min./max.	-10 ... 50 °C
Protection class	IP65
Duty cycle ED	100 %
Compatibility index	13
Weight	See table below

Technical data

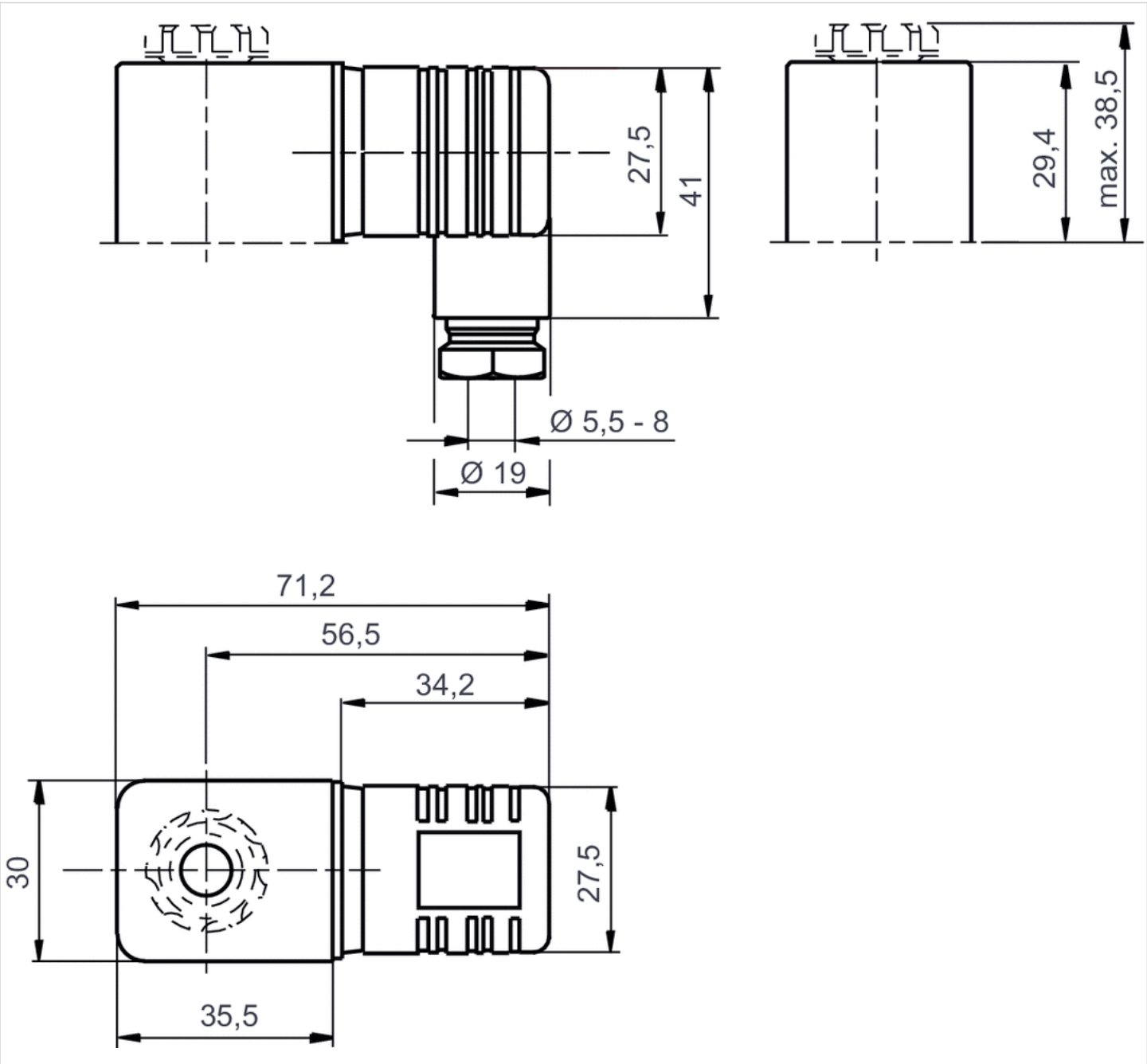
Part No.	Operational voltage	Operational voltage	Operational voltage
	DC	AC 50 Hz	AC 60 Hz
R412000147	-	230 V	230 V
R412000144	24 V	-	-

Part No.	Voltage tolerance	Voltage tolerance	Voltage tolerance	Power consumption
	DC	AC 50 Hz	AC 60 Hz	DC
R412000147	-	-20% / +10%	-10% / +20%	-
R412000144	-10% / +10%	-	-	2,1 W

Part No.	Holding power	Switch-on power	Weight
	AC 50 Hz	AC 50 Hz	
R412000147	4,1 VA	4,1 VA	0,137 kg
R412000144	-	-	0,14 kg

Dimensions

Dimensions



Efficient pneumatic solutions, our program: cylinders and drives, valves and valve systems, air supply management



Visit us: [Emerson.com/Aventics](https://www.emerson.com/Aventics)

Your local contact: [Emerson.com/contactus](https://www.emerson.com/contactus)



Emerson.com



Facebook.com/EmersonAutomationSolutions



LinkedIn.com/company/Emerson-Automation-Solutions



Twitter.com/EMR_Automation

An example configuration is depicted on the title page. The delivered product may thus vary from that in the illustration. Subject to change. This Document, as well as the data, specifications and other information set forth in it, are the exclusive property of AVENTICS GmbH. It may not be reproduced or given to third parties without its consent. Only use the AVENTICS products shown in industrial applications. Read the product documentation completely and carefully before using the product. Observe the applicable regulations and laws of the respective country. When integrating the product into applications, note the system manufacturer's specifications for safe use of the product. The data specified only serve to describe the product. No statements concerning a certain condition or suitability for a certain application can be derived from our information. The information given does not release the user from the obligation of own judgement and verification. It must be remembered that the products are subject to a natural process of wear and aging.

The Emerson logo is a trademark and service mark of Emerson Electric Co. Brand logotype are registered trademarks of one of the Emerson family of companies. All other marks are the property of their respective owners. © 2020 Emerson Electric Co. All rights reserved.
2020-12



CONSIDER IT SOLVED™