

End cover mounting, Series MF1

- Suitable piston Ø 16, 25 32, 40 50 63, 80 mm
- for series RTC-BV, RTC-CG, RTC-HD, RTC-SB



Weight

See table below

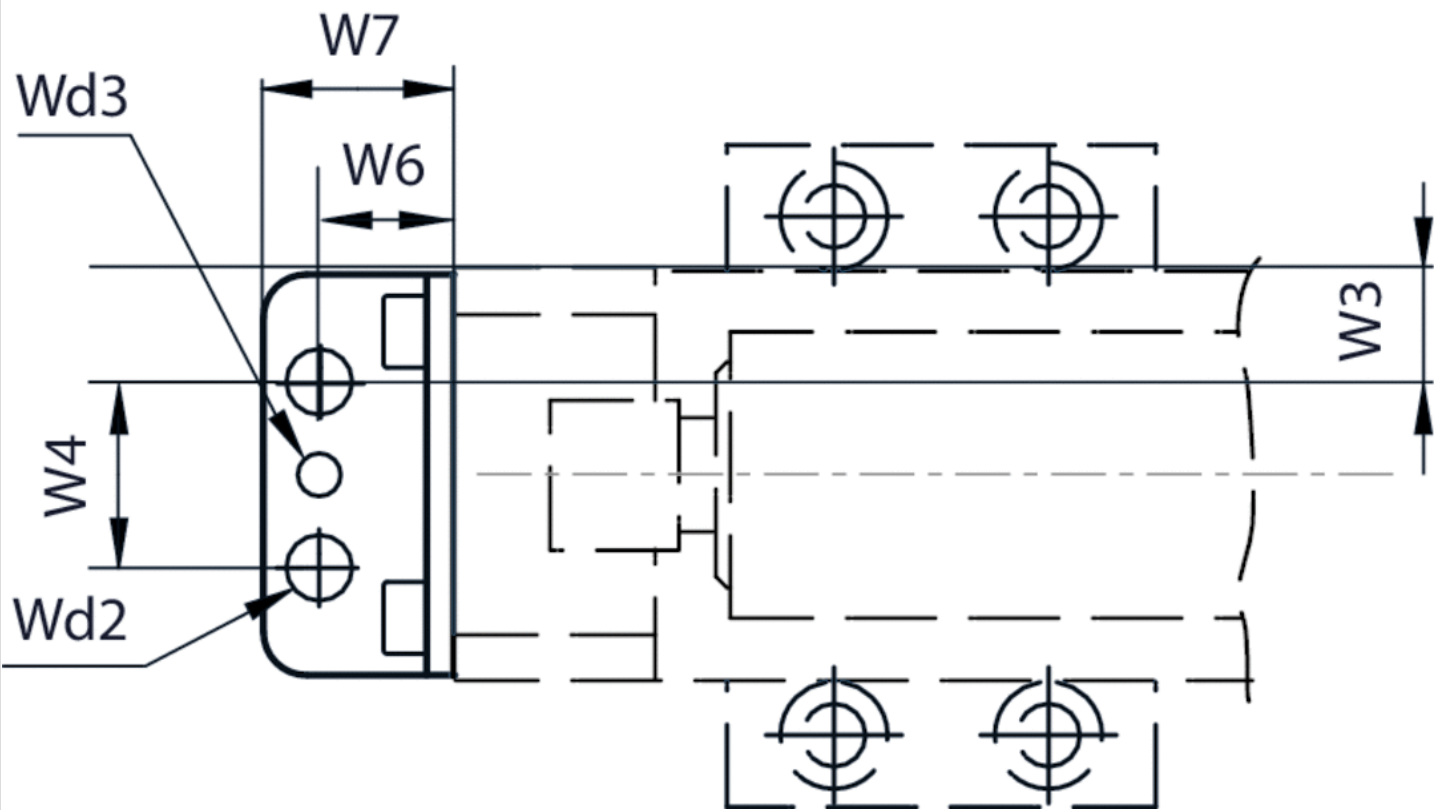
Technical data

Part No.	Piston Ø	Scope of delivery	Weight
R402002728	16, 25 mm	2 piece	0,2 kg
R402002729	32, 40 mm	2 piece	0,3 kg
R402002730	50 mm	2 piece	0,4 kg
R402002731	63, 80 mm	2 piece	0,5 kg

Technical information

Material	
Material	Steel

Dimensions



Dimensions

Part No.	Piston Ø	For series	W3	W4	W6	W7	Wd2
R402002728	16, 25 mm	RTC-BV, RTC-CG, RTC-HD, RTC-SB	8 / 13	18	13,5	19,8	M6
R402002729	32, 40 mm	RTC-BV, RTC-CG, RTC-HD, RTC-SB	16 / 22	26	19	26,8	M8
R402002730	50 mm	RTC-BV, RTC-CG, RTC-HD, RTC-SB	11	70	22	32,7	Ø13,7
R402002731	63, 80 mm	RTC-BV, RTC-CG, RTC-HD, RTC-SB	31 / 45	50	22	32,7	Ø13,7
Wd3							
Ø4 G8							
Ø6 G8							

Wd3
Ø6 G8
Ø6 G8

Efficient pneumatic solutions, our program: cylinders and drives, valves and valve systems, air supply management



Visit us: [Emerson.com/Aventics](https://www.emerson.com/Aventics)

Your local contact: [Emerson.com/contactus](https://www.emerson.com/contactus)



Emerson.com



Facebook.com/EmersonAutomationSolutions



LinkedIn.com/company/Emerson-Automation-Solutions



Twitter.com/EMR_Automation

An example configuration is depicted on the title page. The delivered product may thus vary from that in the illustration. Subject to change. This Document, as well as the data, specifications and other information set forth in it, are the exclusive property of AVENTICS GmbH. It may not be reproduced or given to third parties without its consent. Only use the AVENTICS products shown in industrial applications. Read the product documentation completely and carefully before using the product. Observe the applicable regulations and laws of the respective country. When integrating the product into applications, note the system manufacturer's specifications for safe use of the product. The data specified only serve to describe the product. No statements concerning a certain condition or suitability for a certain application can be derived from our information. The information given does not release the user from the obligation of own judgement and verification. It must be remembered that the products are subject to a natural process of wear and aging.

The Emerson logo is a trademark and service mark of Emerson Electric Co. Brand logotype are registered trademarks of one of the Emerson family of companies. All other marks are the property of their respective owners. © 2020 Emerson Electric Co. All rights reserved.
2020-12



CONSIDER IT SOLVED™