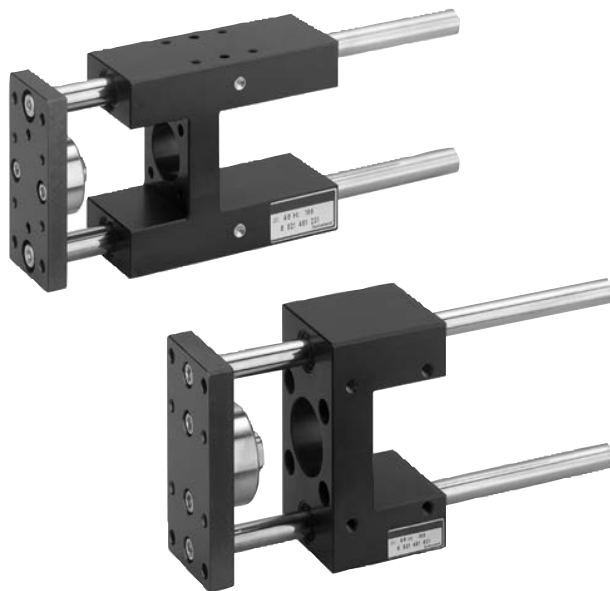


Cylinder Accessories ▶ Guide units, series CG1









Guide units, series CG1

Brochure



Cylinder Accessories ▶ Guide units, series CG1

Guide units, series CG1

	Guide unit, Series GU1 ▶ Ø 12 - 25 mm ▶ Plain bearing ▶ For standard cylinders ISO 6432	4
	Guide unit, Series GH1 ▶ Ø 12 - 25 mm ▶ Plain bearing ▶ For standard cylinders ISO 6432	8
	Guide unit, Series GH2 ▶ Ø 12 - 25 mm ▶ Linear ball bearing ▶ For standard cylinders ISO 6432	11
	Guide unit, Series GU1 ▶ Ø 32 - 100 mm ▶ Plain bearing ▶ For standard cylinders ISO 15552	14
	Guide unit, Series GH1 ▶ Ø 32 - 100 mm ▶ Plain bearing ▶ For standard cylinders ISO 15552	17
	Guide unit, Series GH2 ▶ Ø 32 - 100 mm ▶ Linear ball bearing ▶ For standard cylinders ISO 15552	21
Accessories		
	Flexible coupling form A, Series GU3 ▶ for guide units ▶ U' version, Ø20-100	26
	Flexible coupling form B, Series GU3 ▶ for guide units ▶ H' version, Ø20-100	26
	Flexible coupling form C, Series GU3 ▶ for guide units ▶ version 'U' and 'H', Ø12-63	27
	Flange mounting ▶ for Series for guide units, U' version	27

Part numbers marked in bold are available from the central warehouse in Germany, see the shopping basket for more detailed information

Pneumatics catalog, online PDF, as of 2017-03-29, ©AVENTICS S.à r.l., subject to change

Cylinder Accessories ▶ Guide units, series CG1

Guide units, series CG1



Flange mounting
▶ for Series for guide units, H' version

28

Guide unit, Series GU1

▶ Ø 12 - 25 mm ▶ Plain bearing ▶ For standard cylinders ISO 6432



00127781

Ambient temperature min./max.

-20 °C / 80 °C

Materials:

Bearing housings

Aluminum, colorless anodized

Bearing type

Sintered bronze

Carrying plate

Aluminum, colorless anodized

Flexible coupling in carrying plate

Stainless steel

Guide rods

Stainless steel, smooth rolled

Technical Remarks

- Guide units for cylinder Ø 12 also fit on cylinder Ø 16

Suitable piston Ø		[mm]	12	20	25		
Weight	0 mm stroke	[kg]	0.247	0.66	0.66		
	10 mm stroke	[kg]	0.0078	0.0122	0.0122		

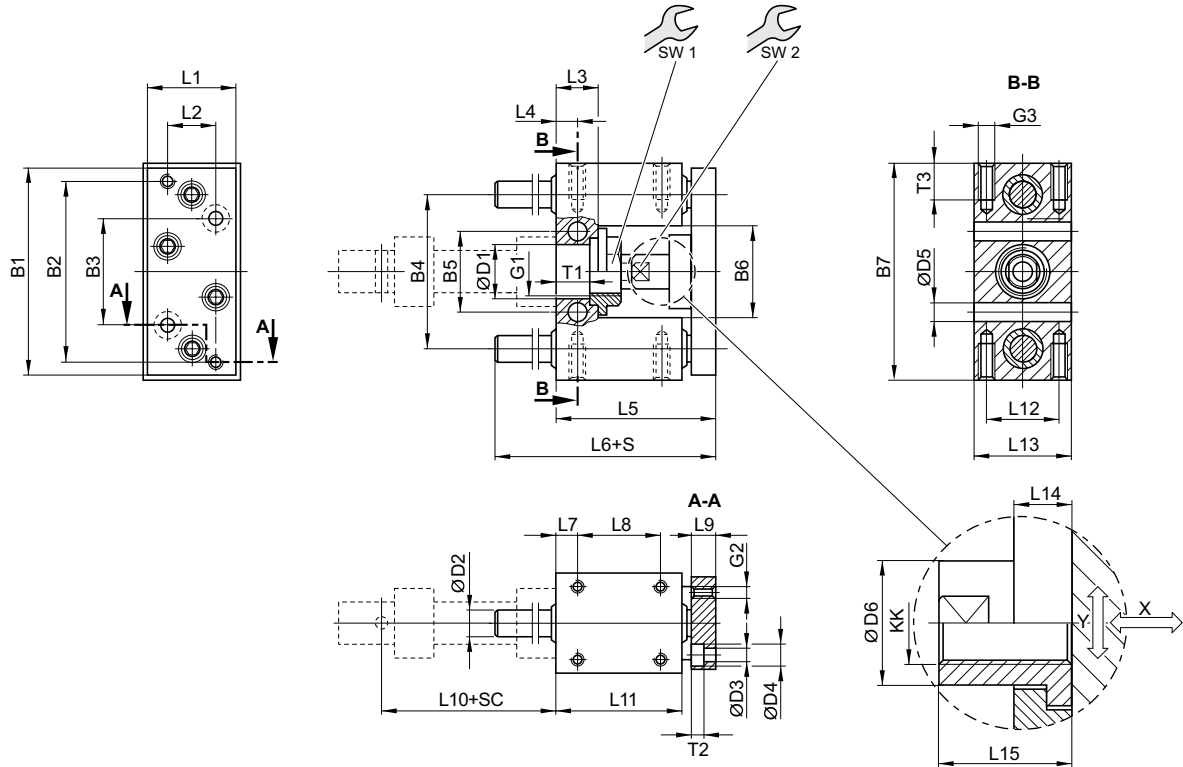
	Suitable piston Ø [mm]	12	20	25		
	Stroke 50	0821401095	0821401070	0821401080		
	100	0821401096	0821401071	0821401081		
	160	-	0821401072	0821401082		
	200	0821401097	0821401073	0821401083		
	250	-	0821401074	0821401084		
	400	-	0821401075	0821401085		
	600	-	-	0821401086		
	800	-	0821401077	0821401087		
	1000	-	0821401078	-		

Cylinder Accessories ▶ Guide units, series CG1

Guide unit, Series GU1

▶ Ø 12 - 25 mm ▶ Plain bearing ▶ For standard cylinders ISO 6432

Ø 12 - 16 mm



00127775

S = stroke
 SC = cylinder stroke
 X = max. play (axial)
 Y = min. play (radial)

[Piston Ø]	B1	B2	B3	B4	B5	B6	B7	D1	D2	D3	D4	D5	D6
12	63	54	32	46	24	27	65	16 H7	8	4.5	8	5.5	10

[Piston Ø]	G1	G2	G3	KK	L1	L2	L3	L4	L5	L6	L7	L8	L9
12	M16x1,5	M4	M4	M6	27	15	13	6.5	53	73	6.5	25	10

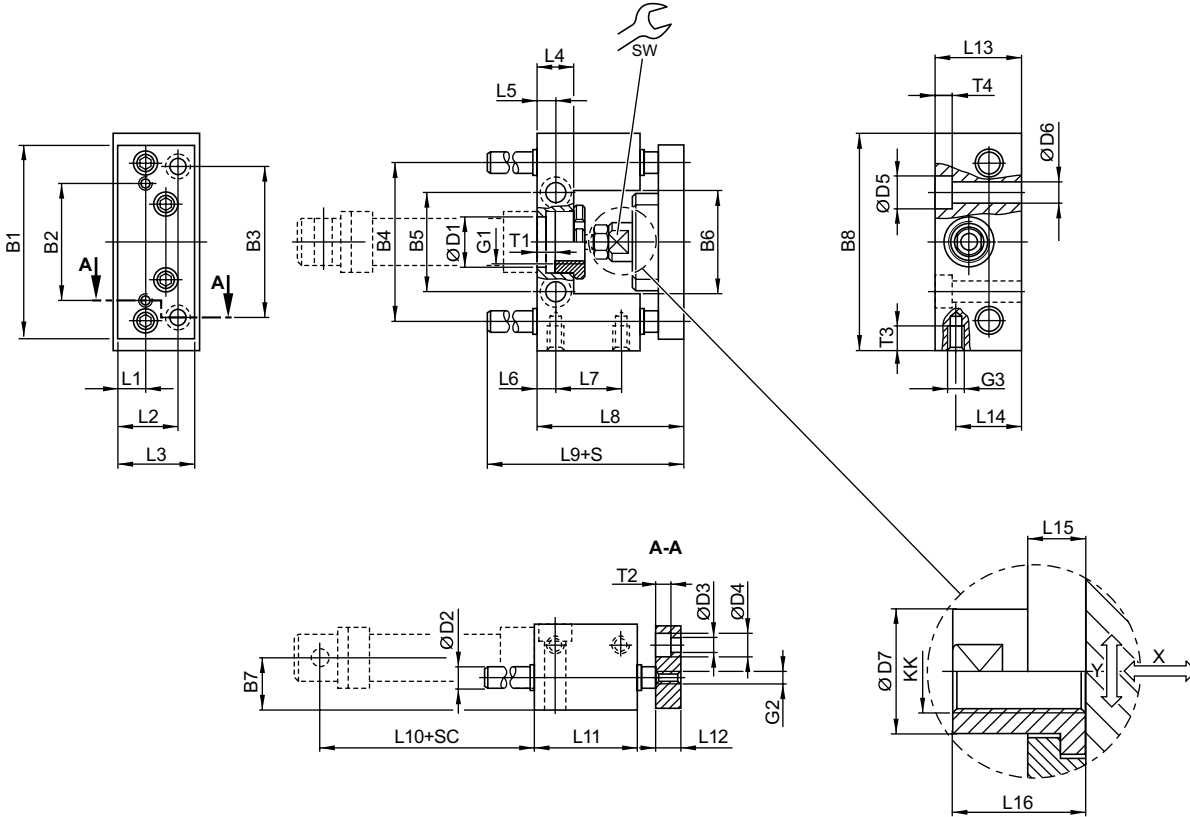
[Piston Ø]	L10	L11	L12	L13	L14	L15	SW1	SW2	T1	T2	T3		
12	52.6	38	22	30	7	18	19	8	10.6	4.6	8		

Part numbers marked in bold are available from the central warehouse in Germany, see the shopping basket for more detailed information
 Pneumatics catalog, online PDF, as of 2017-03-29, ©AVENTICS S.à r.l., subject to change

Guide unit, Series GU1

▶ Ø 12 - 25 mm ▶ Plain bearing ▶ For standard cylinders ISO 6432

Ø 20 - 25 mm



00127776

S = stroke
 SC = cylinder stroke
 X = max. play (axial)
 Y = min. play (radial)

[Piston Ø]	B1	B2	B3	B4	B5	B6	B7	B8	D1	D2	D3	D4	D5
20	90	55	70	74	46.5	48	24	100	22 H7	10	6.6	11	15
25	90	55	70	74	46.5	48	24	100	22 H7	10	6.6	11	15

[Piston Ø]	D6	D7	G1	G2	G3	KK	L1	L2	L3	L4	L5	L6
20	9	18	M22x1,5	M6	M8	M8	14	29	38	17	8.5	8
25	9	18	M22x1,5	M6	M8	M10x1,25	14	29	38	17	8.5	8

[Piston Ø]	L7	L8	L9	L10	L11	L12	L13	L14	L15	L16	T1	T2	T3
20	32	65	77	71	48	12	40	30	14	22	8	7	14
25	32	71	77	76	48	12	40	30	14	22	8	7	14

[Piston Ø]	T4	SW										
20	9	15										
25	9	15										

Part numbers marked in bold are available from the central warehouse in Germany, see the shopping basket for more detailed information

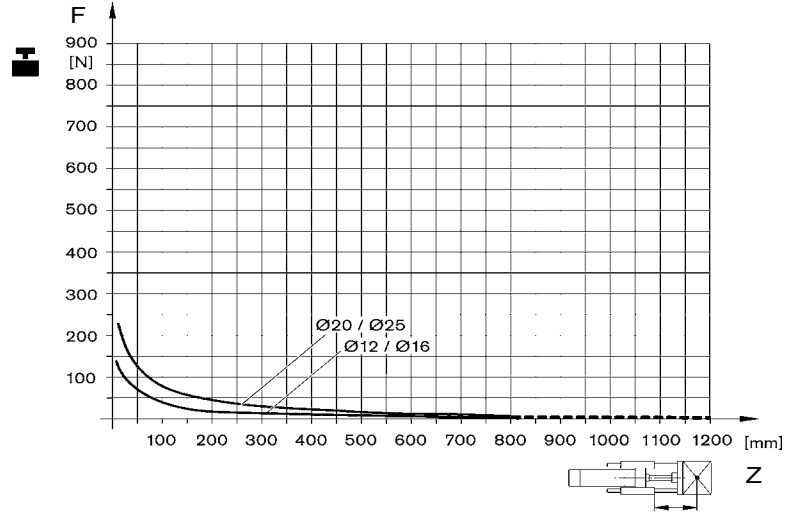
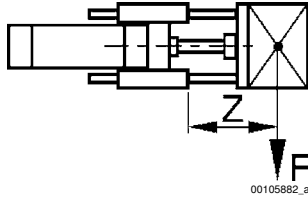
Pneumatics catalog, online PDF, as of 2017-03-29, ©AVENTICS S.à r.l., subject to change

Cylinder Accessories > Guide units, series CG1

Guide unit, Series GU1

> Ø 12 - 25 mm > Plain bearing > For standard cylinders ISO 6432

Useful load



F = Useful load, Z = Projection

Guide unit, Series GH1

▶ Ø 12 - 25 mm ▶ Plain bearing ▶ For standard cylinders ISO 6432



00127780

Ambient temperature min./max.

-20 °C / 80 °C

Materials:

Bearing housings

Aluminum, colorless anodized

Bearing type

Sintered bronze

Carrying plate

Aluminum, colorless anodized

Flexible coupling in carrying plate

Stainless steel

Guide rods

Stainless steel, smooth rolled

Technical Remarks

- Guide units for cylinder Ø 12 also fit on cylinder Ø 16

Suitable piston Ø		[mm]	12	20	25		
Weight	0 mm stroke	[kg]	0.395	0.73	0.73		
	10 mm stroke	[kg]	0.0078	0.0122	0.0122		

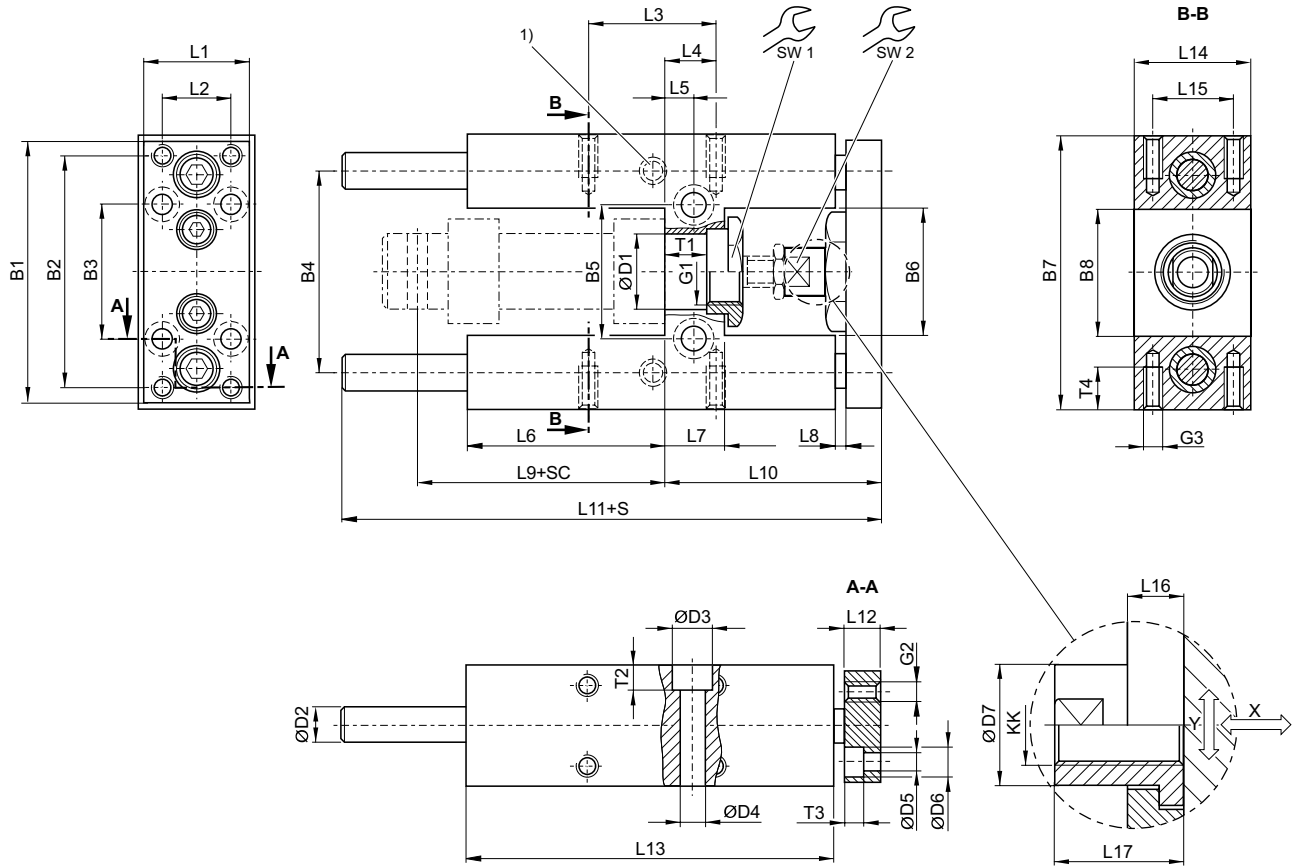
	Suitable piston Ø [mm]	12	20	25		
	Stroke 50	0821401295	0821401200	0821401210		
	100	0821401296	0821401201	0821401211		
	160	-	0821401202	0821401212		
	200	0821401297	0821401203	0821401213		
	250	-	0821401204	0821401214		
	400	-	0821401205	0821401215		
	600	-	0821401206	0821401216		
	800	-	0821401207	0821401217		

Cylinder Accessories ▶ Guide units, series CG1

Guide unit, Series GH1

▶ Ø 12 - 25 mm ▶ Plain bearing ▶ For standard cylinders ISO 6432

Ø 12 - 25 mm



- 1) Lube nipple
- S = stroke
- SC = cylinder stroke
- X = max. play (axial)
- Y = min. play (radial)

00127788

[Piston Ø]	B1	B2	B3	B4	B5	B6	B7	B8	D1	D2	D3	D4	D5
12	63	54	32	46	24	27	65	27	16 H7	8	-	5.5	4.5
20	76	68	40	58	38	37	79	37	22 H7	10	11	6.6	5.5
25	76	68	40	58	38	37	79	37	22 H7	10	11	6.6	5.5

[Piston Ø]	D6	D7	G1	G2	G3	KK	L1	L2	L3	L4	L5	L6
12	8	10	M16x1,5	M4	M4	M6	27	15	32.5	11	6.5	37
20	10.5	14.5	M22x1,5	M5	M6	M8	32	20	32.5	15	8.5	58
25	10.5	14.5	M22x1,5	M5	M6	M10x1,25	32	20	32.5	15	8.5	58

[Piston Ø]	L7	L8	L9	L10	L11	L12	L13	L14	L15	L16	L17	SW1	SW2
12	13	3	52.6	51	133	10	75	30	22	7	18	19	8
20	17	3	71	65	160.5	12	108	34	23	6	22	27	13
25	17	3	76	65	160.5	12	108	34	23	6	17	27	13

[Piston Ø]	T1	T2	T3	T4
12	10.6	-	4.6	8

Part numbers marked in bold are available from the central warehouse in Germany, see the shopping basket for more detailed information

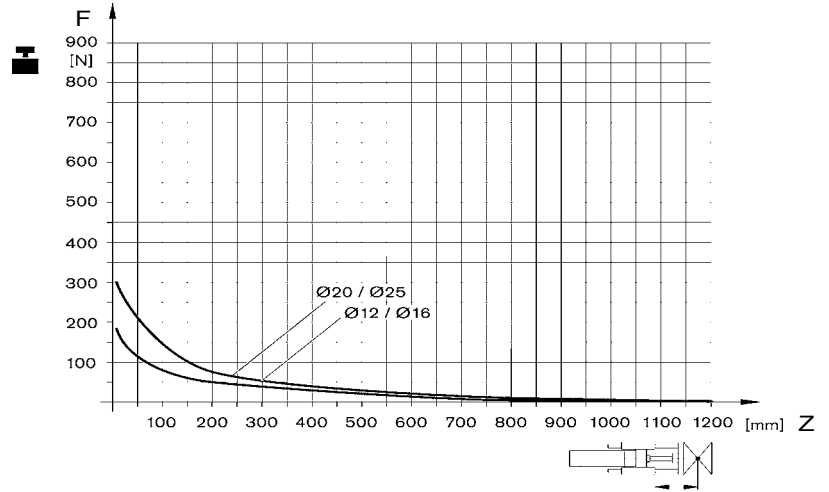
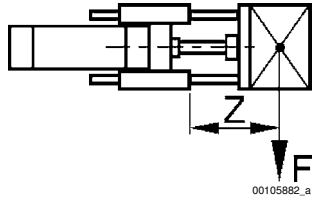
Pneumatics catalog, online PDF, as of 2017-03-29, ©AVENTICS S.à r.l., subject to change

Guide unit, Series GH1

▶ Ø 12 - 25 mm ▶ Plain bearing ▶ For standard cylinders ISO 6432

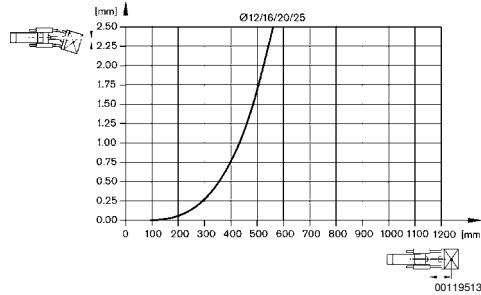
[Piston Ø]	T1	T2	T3	T4									
20	11	7	5.7	14									
25	11	7	5.7	14									

Useful load

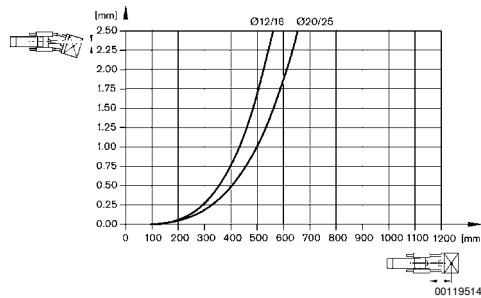


F = Useful load, Z = Projection

Bending due to own load



Bending due to 10 N load



Part numbers marked in bold are available from the central warehouse in Germany, see the shopping basket for more detailed information

Pneumatics catalog, online PDF, as of 2017-03-29, ©AVENTICS S.à r.l., subject to change

Cylinder Accessories ▶ Guide units, series CG1

Guide unit, Series GH2

▶ Ø 12 - 25 mm ▶ Linear ball bearing ▶ For standard cylinders ISO 6432



00127780

Ambient temperature min./max.

-20 °C / 80 °C

Materials:

Bearing housings

Aluminum, colorless anodized

Bearing type

Steel

Carrying plate

Aluminum, colorless anodized

Flexible coupling in carrying plate

Stainless steel

Guide rods

Stainless steel, ground

Technical Remarks

- Guide units for cylinder Ø 12 also fit on cylinder Ø 16

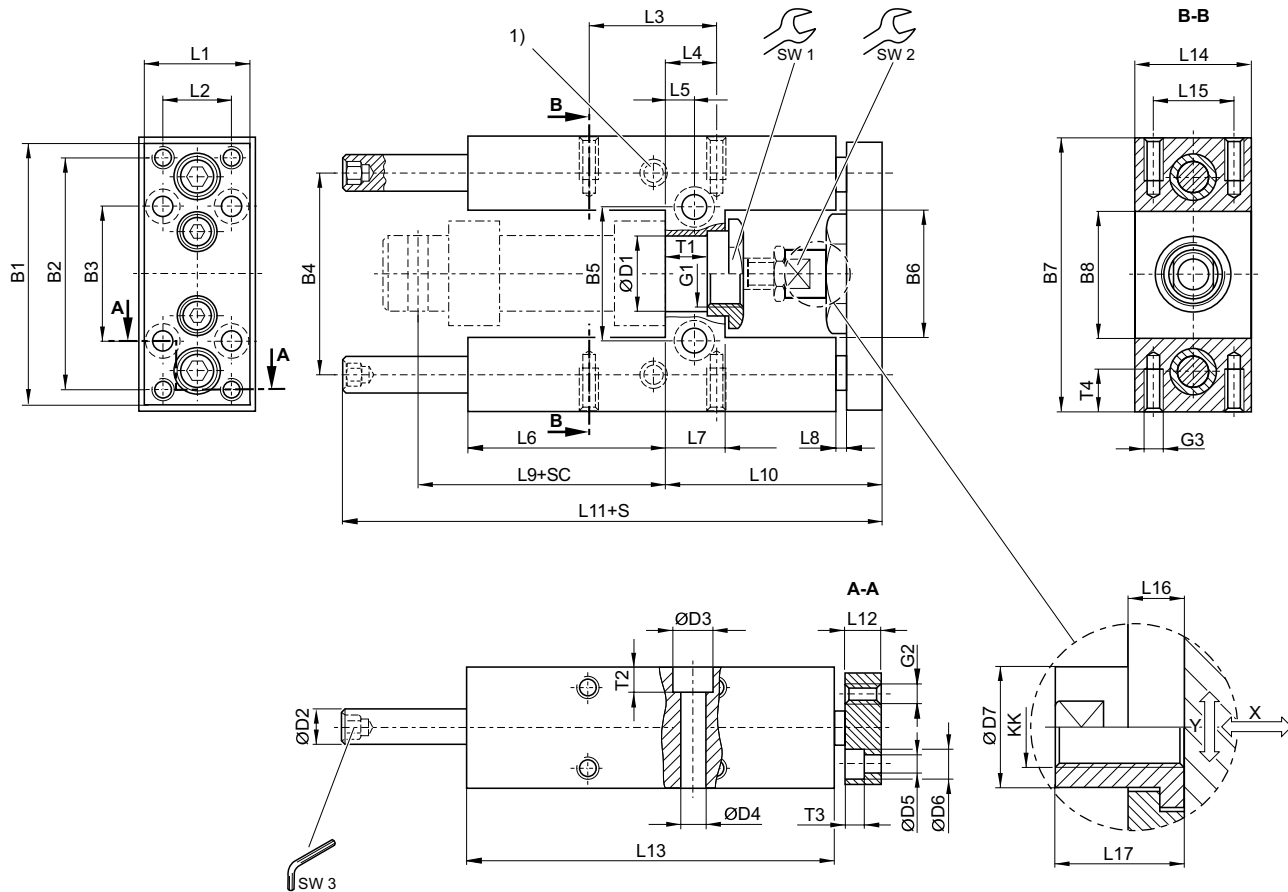
Suitable piston Ø		[mm]	12	20	25		
Weight	0 mm stroke	[kg]	0.395	0.73	0.73		
	10 mm stroke	[kg]	0.0078	0.012	0.012		

	Suitable piston Ø [mm]	12	20	25		
	Stroke 50	0821401395	0821401300	0821401310		
	100	0821401396	0821401301	0821401311		
	200	0821401397	-	-		
	250	-	0821401302	0821401312		
	400	-	0821401303	0821401313		
	600	-	0821401304	0821401314		
	800	-	0821401305	0821401315		

Guide unit, Series GH2

▶ Ø 12 - 25 mm ▶ Linear ball bearing ▶ For standard cylinders ISO 6432

Ø 12 - 25 mm



- 1) Lube nipple
 S = stroke
 SC = cylinder stroke
 X = max. play (axial)
 Y = min. play (radial)
 Hexagon in guide rod

0012777

[Piston Ø]	B1	B2	B3	B4	B5	B6	B7	B8	D1	D2	D3	D4	D5
12	63	54	32	46	24	27	65	27	16 H7	8	-	5.5	4.5
20	76	68	40	58	38	37	79	37	22 H7	10	11	6.6	5.5
25	76	68	40	58	38	37	79	37	22 H7	10	11	6.6	5.5

[Piston Ø]	D6	D7	G1	G2	G3	KK	L1	L2	L3	L4	L5	L6
12	8	10	M16x1,5	M4	M4	M6	27	15	32.5	11	6.5	37
20	10.5	14.5	M22x1,5	M5	M6	M8	32	20	32.5	15	8.5	58
25	10.5	14.5	M22x1,5	M5	M6	M10x1,25	32	20	32.5	15	8.5	58

[Piston Ø]	L7	L8	L9	L10	L11	L12	L13	L14	L15	L16	L17	SW1	SW2
12	13	3	52.6	51	133	10	75	30	22	7	18	19	8
20	17	3	71	65	160.5	12	108	34	23	6	22	27	13
25	17	3	76	65	160.5	12	108	34	23	6	17	27	13

Part numbers marked in bold are available from the central warehouse in Germany, see the shopping basket for more detailed information

Pneumatics catalog, online PDF, as of 2017-03-29, ©AVENTICS S.à r.l., subject to change

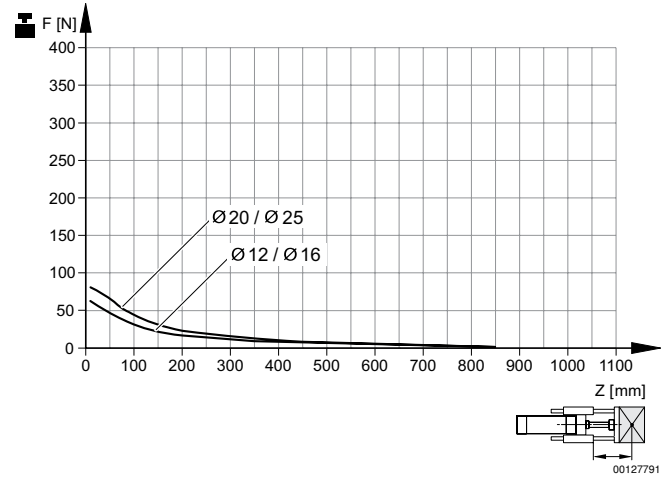
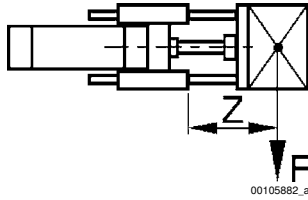
Cylinder Accessories ▶ Guide units, series CG1

Guide unit, Series GH2

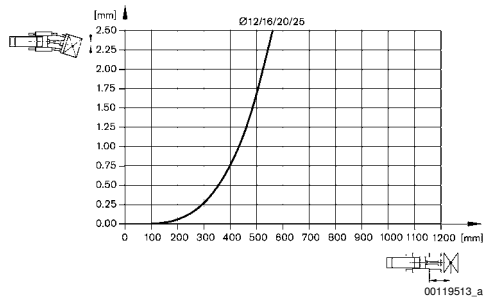
▶ Ø 12 - 25 mm ▶ Linear ball bearing ▶ For standard cylinders ISO 6432

[Piston Ø]	SW3	T1	T2	T3	T4								
12	4	10.6	-	4.6	8								
20	5	11	7	5.7	14								
25	5	11	7	5.7	14								

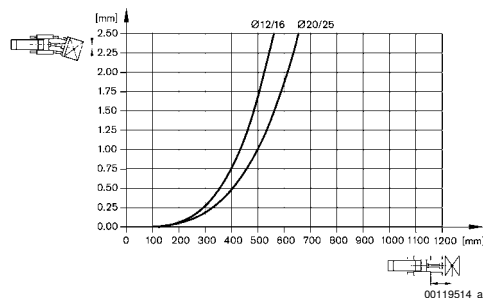
Useful load



Bending due to own load



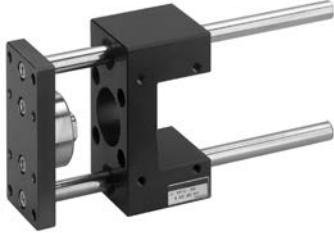
Bending due to 10 N load



Part numbers marked in bold are available from the central warehouse in Germany, see the shopping basket for more detailed information
Pneumatics catalog, online PDF, as of 2017-03-29, ©AVENTICS S.à r.l., subject to change

Guide unit, Series GU1

▶ Ø 32 - 100 mm ▶ Plain bearing ▶ For standard cylinders ISO 15552



00105859

Ambient temperature min./max.

-20 °C / 80 °C

Materials:

Bearing housings

Aluminum, colorless anodized

Bearing type

Sintered bronze

Carrying plate

Aluminum, colorless anodized

Flexible coupling in carrying plate

Stainless steel

Guide rods

Stainless steel, smooth rolled

Suitable piston Ø		[mm]	32	40	50	63	80
Weight	0 mm stroke	[kg]	0.63	0.946	1.356	1.655	3.45
	10 mm stroke	[kg]	0.0122	0.0176	0.0176	0.0176	0.0222

Suitable piston Ø		[mm]	100				
Weight	0 mm stroke	[kg]	4.69				
	10 mm stroke	[kg]	0.0222				

	Suitable piston Ø [mm]	32	40	50	63	80	
	Stroke 50	0821401010	0821401020	0821401030	0821401480	0821401050	
	100	0821401011	0821401021	0821401031	0821401481	0821401051	
	160	0821401012	0821401022	0821401032	0821401482	0821401052	
	200	0821401013	0821401023	0821401033	0821401483	0821401053	
	250	0821401014	0821401024	0821401034	0821401484	0821401054	
	320	0821401015	0821401025	0821401035	0821401485	0821401055	
	400	0821401016	0821401026	0821401036	0821401486	0821401056	
	500	0821401017	0821401027	0821401037	0821401487	0821401057	
	600	0821401018	0821401028	0821401038	0821401488	0821401058	
	800	0821401019	0821401029	0821401039	0821401489	0821401059	
	1000	0821401500	0821401502	0821401504	0821401490	0821401508	
	1200	0821401501	0821401503	0821401505	0821401491	0821401509	
		Suitable piston Ø [mm]	100				
		Stroke 50	0821401060				
100		0821401061					
160		0821401062					
200		0821401063					
250		0821401064					
320		0821401065					
400		0821401066					
500		0821401067					
600		0821401068					
800		0821401069					
1000		0821401510					
1200	0821401511						

Inch dimensions rounded to the nearest whole number.

For use with hybrid inch cylinders with metric piston rod thread

Part numbers marked in bold are available from the central warehouse in Germany, see the shopping basket for more detailed information

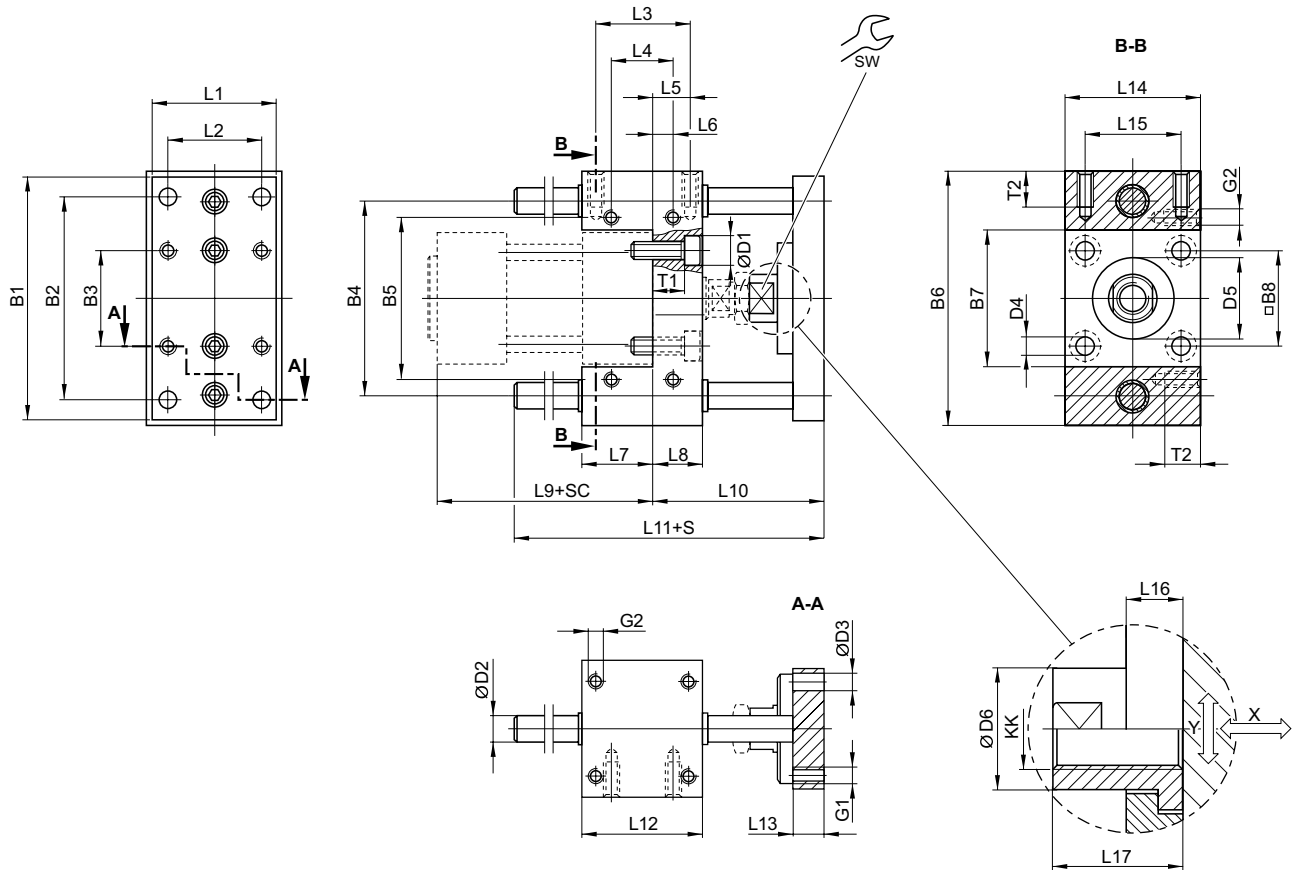
Pneumatics catalog, online PDF, as of 2017-03-29, ©AVENTICS S.à r.l., subject to change

Cylinder Accessories ► Guide units, series CG1

Guide unit, Series GU1

► Ø 32 - 100 mm ► Plain bearing ► For standard cylinders ISO 15552

Ø 32 - 100 mm



S = stroke
 SC = cylinder stroke
 X = max. play (axial)
 Y = min. play (radial)

00127778

[Piston Ø]	B1	B2	B3	B4	B5	B6	B7	B8	D1	D2	D3	D4	D5
32	90	78	32.5	74	58	100	48	32.5	11	10	6.6	6.6	30 M8
40	100	84	38	80	64	106	54	38	11	12	6.6	6.6	35 M8
50	120	100	46.5	96	80	125	66	46.5	15	12	9	9	40 M8
63	125	105	56.5	104	95	132	76	56.5	15	12	9	9	45 M8
80	155	130	72	130	130	165	98	72	18	16	11	11	45 M8
100	175	150	89	150	150	185	118	89	18	16	11	11	55 M8

[Piston Ø]	D6	G1	G2	KK	L1	L2	L3	L4	L5	L6	L7	L8	L9
32	18	M6	M6	M10x1,25	45	32.5	32.5	32.5	9.25	9.25	31	17	94
40	18	M6	M6	M12x1,25	50	38	38	38	11	11	37	21	105
50	24	M8	M8	M16x1,5	60	46.5	46.5	46.5	18.75	18.75	34	25	106
63	24	M8	M8	M16x1,5	70	56.5	56.5	56.5	15.25	15.25	51	25	121
80	30	M10	M10	M20x1,5	90	72	72	50	25	14	56	34	128
100	30	M10	M10	M20x1,5	110	89	89	70	28.5	19	71	39	138

[Piston Ø]	L10	L11	L12	L13	L14	L15	L16	L17	SW	T1	T2		
32	69	106	48	12	48	32.5	14	22	15	10	14		

Part numbers marked in bold are available from the central warehouse in Germany, see the shopping basket for more detailed information

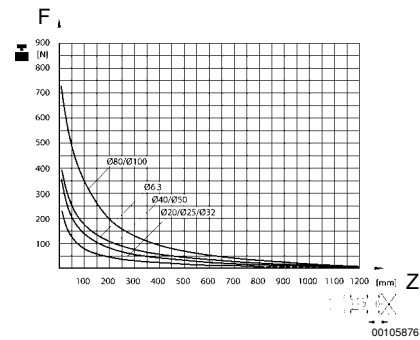
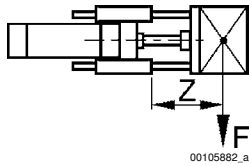
Pneumatics catalog, online PDF, as of 2017-03-29, ©AVENTICS S.à r.l., subject to change

Guide unit, Series GU1

▶ Ø 32 - 100 mm ▶ Plain bearing ▶ For standard cylinders ISO 15552

[Piston Ø]	L10	L11	L12	L13	L14	L15	L16	L17	SW	T1	T2		
40	74	117	58	12	56	38	14	22	15	14	14		
50	89	129	59	15	66	46.5	14	26	22	16	16		
63	89	146	76	15	76	56.5	14	26	22	16	16		
80	106	170	90	16	98	72	14	32	27	24	20		
100	111	190	110	16	118	89	14	32	27	29	20		

Useful load



F = Useful load, Z = Projection

Cylinder Accessories ▶ Guide units, series CG1

Guide unit, Series GH1

▶ Ø 32 - 100 mm ▶ Plain bearing ▶ For standard cylinders ISO 15552



00105863

Ambient temperature min./max.

-20 °C / 80 °C

Materials:

Bearing housings

Aluminum, colorless anodized

Bearing type

Sintered bronze

Carrying plate

Aluminum, colorless anodized

Flexible coupling in carrying plate

Stainless steel

Guide rods

Stainless steel, smooth rolled

Suitable piston Ø		[mm]	32	40	50	63	80
Weight	0 mm stroke	[kg]	1.3	2.3	3.7	4.7	8.8
	10 mm stroke	[kg]	0.009	0.016	0.025	0.025	0.039

Suitable piston Ø		[mm]	100				
Weight	0 mm stroke	[kg]	11.1				
	10 mm stroke	[kg]	0.039				

	Suitable piston Ø [mm]	32	40	50	63	80
	Stroke 50	0821401220	0821401230	0821401240	0821401280	-
	100	0821401221	0821401231	0821401241	0821401281	0821401260
	160	0821401222	0821401232	0821401242	0821401285	-
	200	0821401223	0821401233	0821401243	0821401282	0821401261
	250	0821401224	0821401234	0821401244	0821401286	-
	320	0821401225	0821401235	0821401245	0821401283	0821401262
	400	0821401226	0821401236	0821401246	0821401287	-
	500	0821401227	0821401237	0821401247	0821401284	0821401263
	600	0821401228	0821401238	0821401249	0821401288	0821401264
	800	0821401229	0821401239	0821401474	0821401289	0821401265
	1000	0821401470	0821401472	0821401475	0821401290	0821401266
	1200	0821401471	0821401473	0821401476	0821401291	0821401267
		Suitable piston Ø [mm]	100			
	Stroke 50	-				
	100	0821401270				
	160	-				
	200	0821401271				
	250	-				
	320	0821401272				
	400	-				
	500	0821401273				
	600	0821401274				
	800	0821401275				
1000	0821401276					
1200	0821401277					

Inch dimensions rounded to the nearest whole number.
For use with hybrid inch cylinders with metric piston rod thread

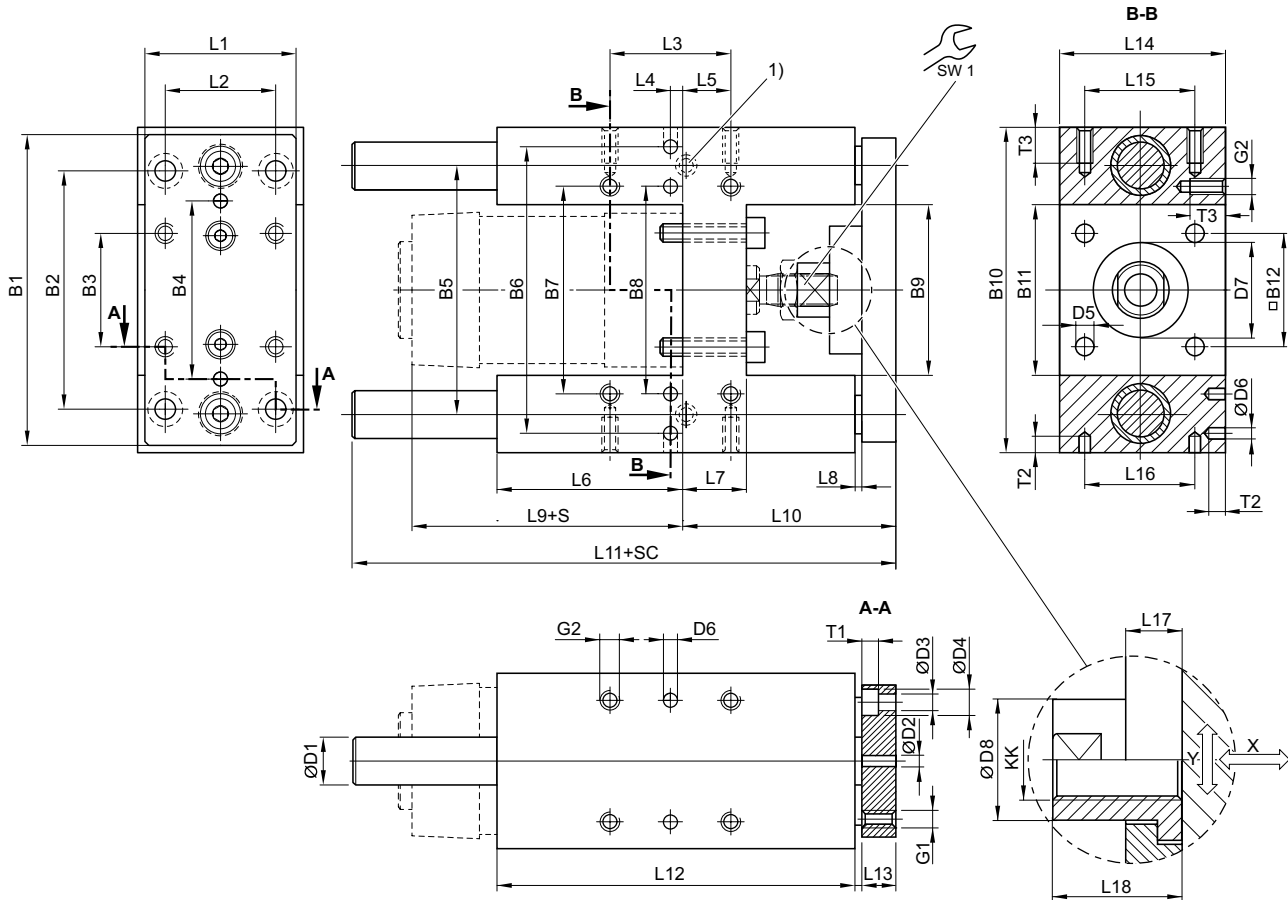
Part numbers marked in bold are available from the central warehouse in Germany, see the shopping basket for more detailed information

Pneumatics catalog, online PDF, as of 2017-03-29, ©AVENTICS S.à r.l., subject to change

Guide unit, Series GH1

▶ Ø 32 - 100 mm ▶ Plain bearing ▶ For standard cylinders ISO 15552

Ø 32 - 100 mm



00127787

- 1) Lube nipple
- S = stroke
- SC = cylinder stroke
- X = max. play (axial)
- Y = min. play (radial)

[Piston Ø]	B1	B2	B3	B4	B5	B6	B7	B8	B9	B10	B11	B12	D1
32	90	78	32.5	50	74	81	61	61	50.2	97	50.2	32.5	12
40	110	84	38	54	87	99	69	69	58.2	115	58.2	38	16
50	130	100	46.5	72	104	119	85	85	70.2	137	70.2	46.5	20
63	145	105	56.5	82	119	132	100	100	85.2	152	85.2	56.5	20
80	180	130	72	106	148	166	130	130	105.4	189	105.4	72	25
100	200	150	89	131	172	190	150	150	130.4	213	130.4	89	25

[Piston Ø]	D2 H7	D3	D4	D5	D6 H7	D7 M8	D8	G1	G2	KK	L1	L2	L3
32	6	6.6	11	6.6	6	30	14.5	M6	M6	M10x1,25	45	32.5	32.5
40	6	6.6	11	6.6	6	35	18	M6	M6	M12x1,25	54	38	38
50	6	9	15	9	6	40	24	M8	M8	M16x1,5	63	46.5	46.5
63	6	9	15	9	6	45	24	M8	M8	M16x1,5	80	56.5	56.5
80	6	11	18	11	6	45	30	M10	M10	M20x1,5	100	72	72
100	6	11	18	11	6	55	30	M10	M10	M20x1,5	120	89	89

Part numbers marked in bold are available from the central warehouse in Germany, see the shopping basket for more detailed information

Pneumatics catalog, online PDF, as of 2017-03-29, ©AVENTICS S.à r.l., subject to change

Cylinder Accessories ► Guide units, series CG1

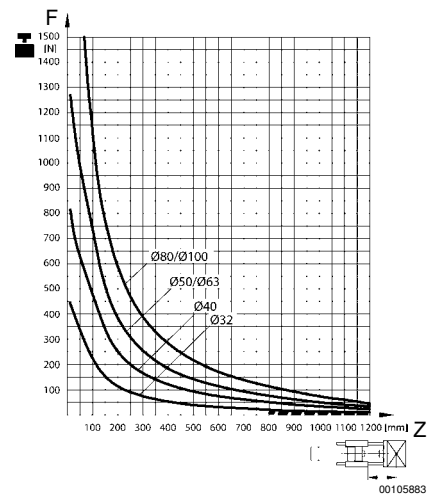
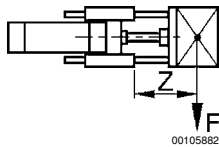
Guide unit, Series GH1

► Ø 32 - 100 mm ► Plain bearing ► For standard cylinders ISO 15552

[Piston Ø]	L4	L5	L6	L7	L8	L9	L10	L11	L12	L13	L14	L15	L16
32	12	4.25	76	17	3	94	64	177.5	125	12	50	32.5	32.5
40	8	11	81	21	3	105	74	192.5	140	12	58	38	38
50	4.5	18.75	79	26	3	106	89	205	150	15	70	46.5	46.5
63	13	15.25	111	26	3	121	89	237	182	15	85	56.5	56.5
80	15	21	128	34	3	128	110	280	215	20	105	72	72
100	20	24.5	128	39	3	138	115	280	220	20	130	89	89

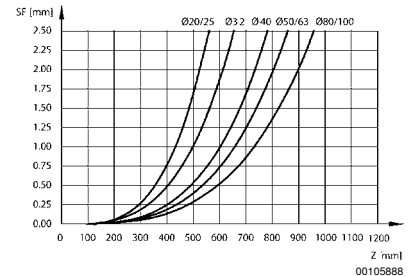
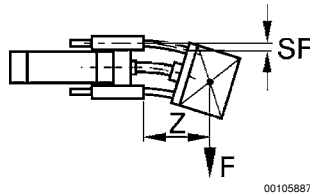
[Piston Ø]	L17	L18	T1	T2	T3	SW1							
32	6	17	6.5	10	15	13							
40	14	22	6.5	10	15	15							
50	14	26	9	10	16	22							
63	14	26	9	10	16	22							
80	14	32	11	10	20	27							
100	14	32	11	10	20	27							

Useful load



F = Useful load, Z = Projection

Bending due to own load



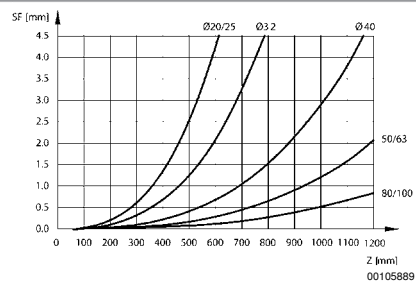
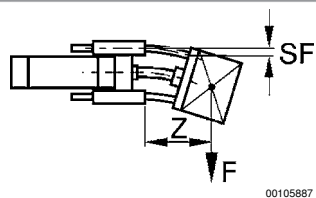
F = useful load (at the load center), SF = bending, Z = projection

Part numbers marked in bold are available from the central warehouse in Germany, see the shopping basket for more detailed information

Pneumatics catalog, online PDF, as of 2017-03-29, ©AVENTICS S.à r.l., subject to change

Guide unit, Series GH1

▶ Ø 32 - 100 mm ▶ Plain bearing ▶ For standard cylinders ISO 15552

Bending due to 10 N load


F = useful load (at the load center), SF = bending, Z = projection

Cylinder Accessories ► Guide units, series CG1

Guide unit, Series GH2

► Ø 32 - 100 mm ► Linear ball bearing ► For standard cylinders ISO 15552



00105863

Ambient temperature min./max.

-20 °C / 80 °C

Materials:

Bearing type

Steel

Carrying plate

Aluminum, colorless anodized

Flexible coupling in carrying plate

Stainless steel

Guide rods

Steel, hardened

Suitable piston Ø		[mm]	32	40	50	63	80
		Weight	0 mm stroke	[kg]	1.3	2.3	3.7
	10 mm stroke	[kg]	0.009	0.016	0.025	0.025	0.039

Suitable piston Ø		[mm]	100				
		Weight	0 mm stroke	[kg]	11.1		
	10 mm stroke	[kg]	0.039				

	Suitable piston Ø [mm]	32	40	50	63	80
	Stroke	50	0821401320	0821401330	0821401340	0821401380
100		0821401321	0821401331	0821401341	0821401381	0821401360
200		0821401322	0821401332	0821401342	0821401382	0821401361
320		0821401323	0821401333	0821401343	0821401383	0821401362
500		0821401324	0821401334	0821401344	0821401384	0821401363
600		0821401325	0821401335	0821401345	0821401385	0821401364
800		0821401326	0821401336	0821401346	0821401386	0821401365
1000		0821401327	0821401337	0821401347	0821401387	0821401366
1200		0821401328	0821401338	0821401348	0821401388	0821401367
	Suitable piston Ø [mm]	100				
Stroke	50	-				
	100	0821401370				
	200	0821401371				
	320	0821401372				
	500	0821401373				
	600	0821401374				
	800	0821401375				
	1000	0821401376				
1200	0821401377					

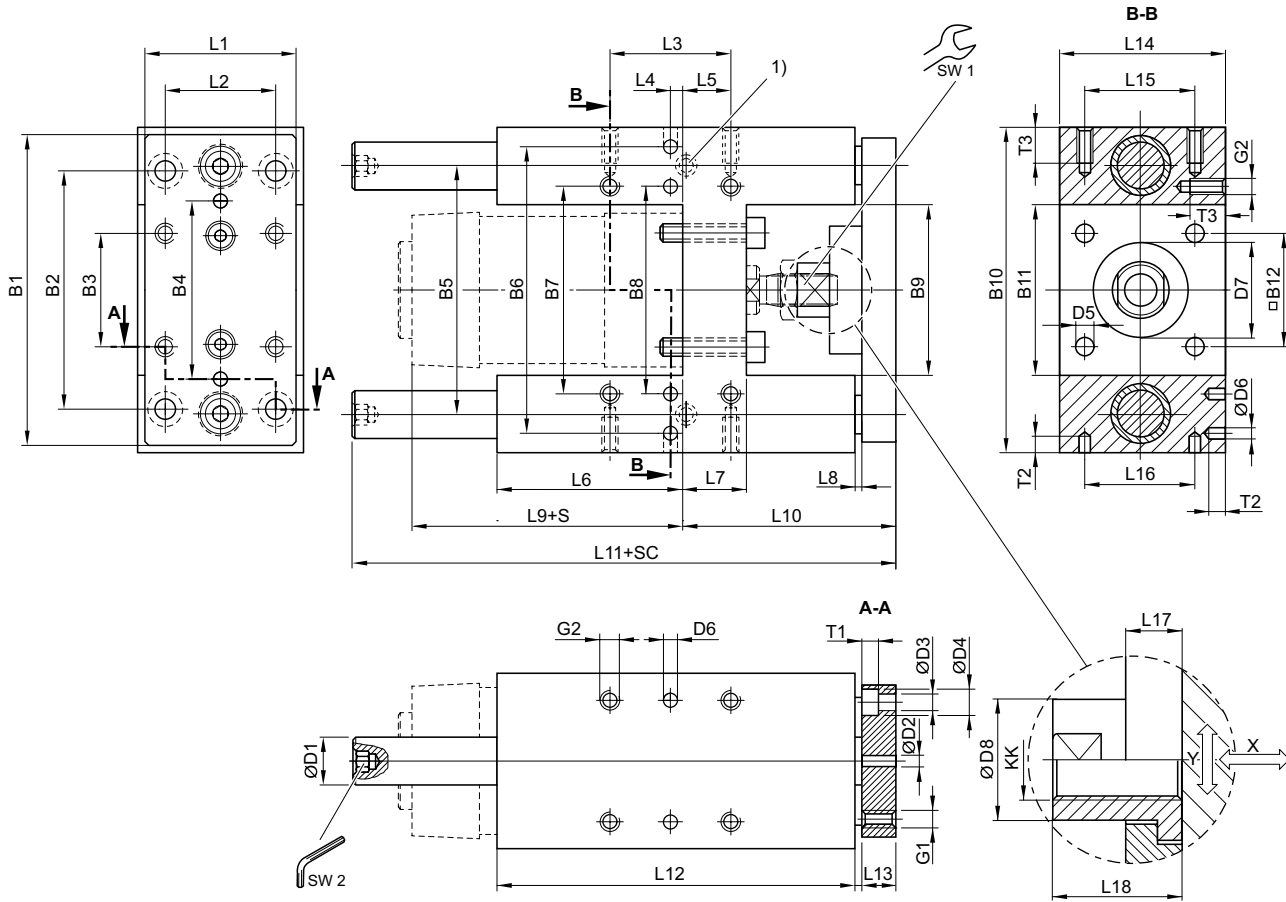
Inch dimensions rounded to the nearest whole number.

For use with hybrid inch cylinders with metric piston rod thread

Guide unit, Series GH2

▶ Ø 32 - 100 mm ▶ Linear ball bearing ▶ For standard cylinders ISO 15552

Ø 32 - 100 mm



00127779

- 1) Lube nipple
- S = stroke
- SC = cylinder stroke
- X = max. play (axial)
- Y = min. play (radial)
- Hexagon in guide rod

[Piston Ø]	B1	B2	B3	B4	B5	B6	B7	B8	B9	B10	B11	B12	D1
32	90	78	32.5	50	74	81	61	61	50.2	97	50.2	32.5	12
40	110	84	38	54	87	99	69	69	58.2	115	58.2	38	16
50	130	100	46.5	72	104	119	85	85	70.2	137	70.2	46.5	20
63	145	105	56.5	82	119	132	100	100	85.2	152	85.2	56.5	20
80	180	130	72	106	148	166	130	130	105.4	189	105.4	72	25
100	200	150	89	131	172	190	150	150	130.4	213	130.4	89	25

[Piston Ø]	D2 H7	D3	D4	D5	D6 H7	D7 M8	D8	G1	G2	KK	L1	L2	L3
32	6	6.6	11	6.6	6	30	14.5	M6	M6	M10x1,25	45	32.5	32.5
40	6	6.6	11	6.6	6	35	18	M6	M6	M12x1,25	54	38	38
50	6	9	15	9	6	40	24	M8	M8	M16x1,5	63	46.5	46.5
63	6	9	15	9	6	45	24	M8	M8	M16x1,5	80	56.5	56.5
80	6	11	18	11	6	45	30	M10	M10	M20x1,5	100	72	72
100	6	11	18	11	6	55	30	M10	M10	M20x1,5	120	89	89

Part numbers marked in bold are available from the central warehouse in Germany, see the shopping basket for more detailed information

Pneumatics catalog, online PDF, as of 2017-03-29, ©AVENTICS S.à r.l., subject to change

Cylinder Accessories ► Guide units, series CG1

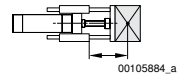
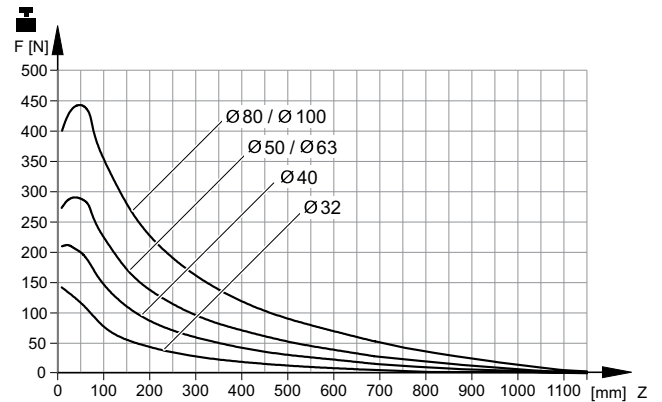
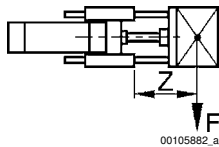
Guide unit, Series GH2

► Ø 32 - 100 mm ► Linear ball bearing ► For standard cylinders ISO 15552

[Piston Ø]	L4	L5	L6	L7	L8	L9	L10	L11	L12	L13	L14	L15	L16
32	12	4.25	76	17	3	94	64	177.5	125	12	50	32.5	32.5
40	8	11	81	21	3	105	74	192.5	140	12	58	38	38
50	4.5	18.75	79	26	3	106	89	237	150	15	70	46.5	46.5
63	13	15.25	111	26	3	121	89	237	182	15	85	56.5	56.5
80	15	21	128	34	3	128	110	280	215	20	105	72	72
100	20	24.5	128	39	3	138	115	280	220	20	130	89	89

[Piston Ø]	L17	L18	T1	T2	T3	SW1	SW2						
32	6	17	6.5	10	15	13	5						
40	14	22	6.5	10	15	15	6						
50	14	26	9	10	16	22	6						
63	14	26	9	10	16	22	6						
80	14	32	11	10	20	27	8						
100	14	32	11	10	20	27	8						

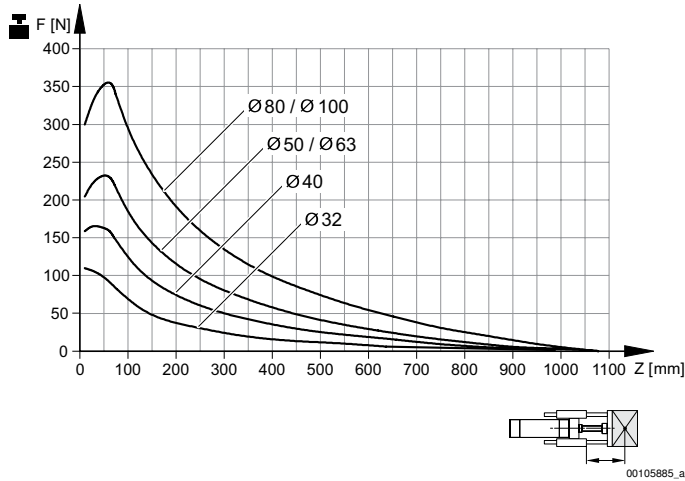
Useful load



Service life 2×10^6 m
 F = Useful load, Z = Projection

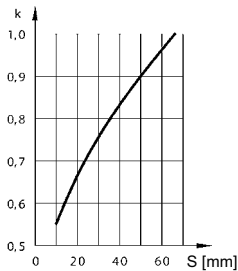
Guide unit, Series GH2

▶ Ø 32 - 100 mm ▶ Linear ball bearing ▶ For standard cylinders ISO 15552



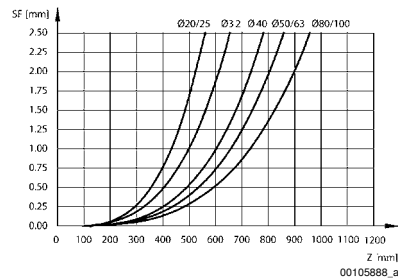
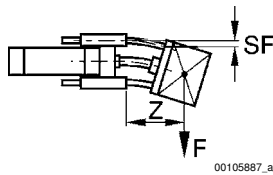
Service life 5×10^6 m
 F = Useful load, Z = Projection

Reduction of useful load for short-stroke



S = stroke
 k=correction factor: normal=1; shock loaded=2
 With a short stroke, the useful load figures determined from the diagram must be multiplied by the correction factor k.
 These short-stroke adjustments are already included in the load diagram for a displacement of up to 60 mm.

Bending due to own load



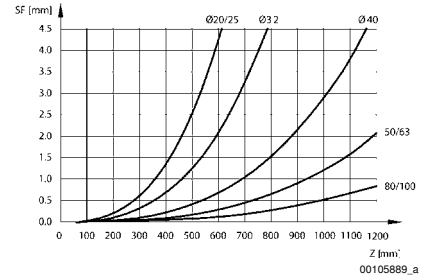
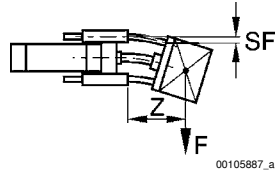
F = useful load (at the load center), SF = bending, Z = projection

Cylinder Accessories ▶ Guide units, series CG1

Guide unit, Series GH2

▶ Ø 32 - 100 mm ▶ Linear ball bearing ▶ For standard cylinders ISO 1552

Bending due to 10 N load



F = useful load (at the load center), SF = bending, Z = projection

Guide units, Series CG1

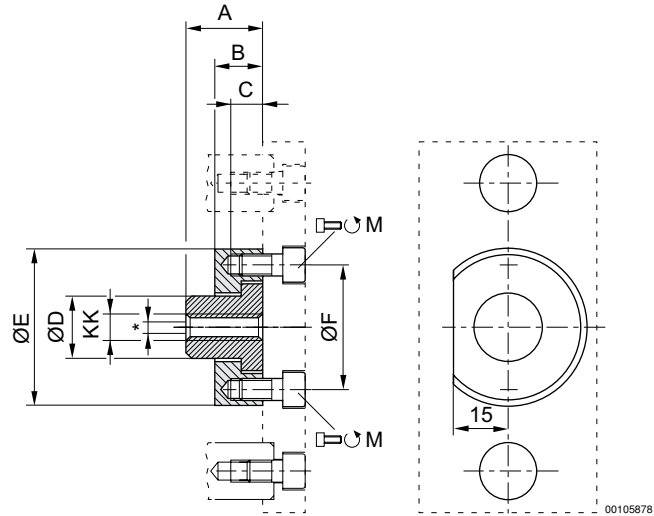
Accessories

Flexible coupling form A, Series GU3

▶ for guide units ▶ U' version, Ø20–100



00106408



* Radial joint from 1, - 2,5 mm

Scope of delivery: flexible coupling incl. mounting screws

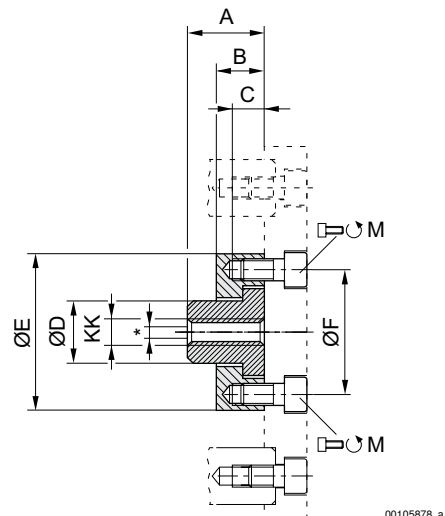
Part No.	KK	Ø	M	A	B	C	ØD	ØE	ØF	Material
R413000277	M8	20	2x M6x12	22	14	8	18	45	36	Stainless steel
R413000278	M10x1,25	25	2x M6x12	22	14	8	18	45	36	Stainless steel
R413000279	M10x1,25	32	2x M6x12	22	14	8	18	45	36	Stainless steel
R413000282	M20x1,5	80/100	4x M6x14	32	14	9.5	30	60	61	Stainless steel

Flexible coupling form B, Series GU3

▶ for guide units ▶ H' version, Ø20–100



00106407



* Radial joint from 1,5 - 1,8 mm

Scope of delivery: flexible coupling incl. mounting screws

Part numbers marked in bold are available from the central warehouse in Germany, see the shopping basket for more detailed information

Pneumatics catalog, online PDF, as of 2017-03-29, ©AVENTICS S.à r.l., subject to change

Cylinder Accessories ▶ Guide units, series CG1

Guide units, Series CG1
Accessories

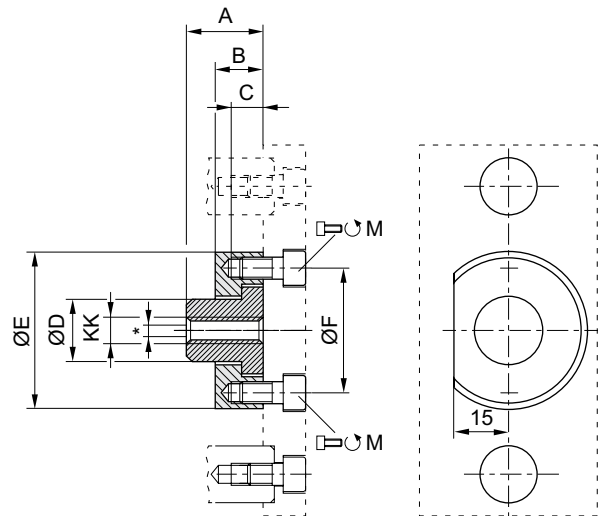
Part No.	KK	Ø	M	A	B	C	D	ØE	ØF	Material
R413000283	M8	20	2x M5x12	22	6	6	14.5	SW 30	26	Stainless steel
R413000284	M10x1,25	25/32	2x M5x12	17	6	6	14.5	SW 30	26	Stainless steel
R413000285	M20x1,5	80/100	4x M6x20	32	14	9.5	30	60	51	Stainless steel

Flexible coupling form C, Series GU3

▶ for guide units ▶ version 'U' and 'H', Ø12–63



00136409



00105878

* Radial joint from 2 - 2,5 mm
Scope of delivery: flexible coupling incl. mounting screws

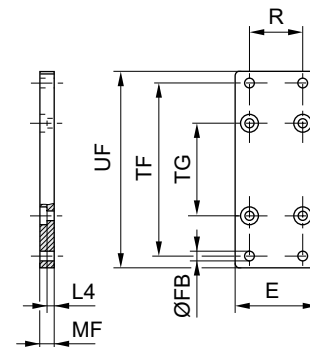
Part No.	KK	Ø	M	A	B	C	D	ØE	ØF	Material
R413000276	M6	12/16	2x M4x10	18	7	7	10	22	15	Stainless steel
R413000280	M12x1,25	40	2x M6x12	22	14	8	18	45	36	Stainless steel
R413000281	M16x1,5	50/63	4x M6x14	26	14	8	24	54	45	Stainless steel

Flange mounting

▶ for Series for guide units, U' version



Flanschbef_CG1



00126393

Part numbers marked in bold are available from the central warehouse in Germany, see the shopping basket for more detailed information

Pneumatics catalog, online PDF, as of 2017-03-29, ©AVENTICS S.à r.l., subject to change

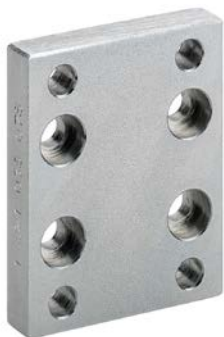
Guide units, Series CG1 Accessories

Part No.	Piston Ø	For series	E	Ø FB	L4	MF	R	TF	TG	UF		
1827010489	20, 25	for guide units U' version	50	7	4,5 -0,2	10	32	56	70	70		
1827010490	32	for guide units U' version	50	6.6	4.5	10	32.5	116	58	130		
1827010491	40	for guide units U' version	55	9	4.5	10	38	126	64	142		
1827010492	50	for guide units U' version	70	9	6	12	46.5	150	80	170		
1827010493	63	for guide units U' version	80	9	6	12	56.5	156	95	176		
1827010494	80	for guide units U' version	100	12	9	16	80	195	130	220		
1827010495	100	for guide units U' version	120	14	9	16	95	217	150	245		

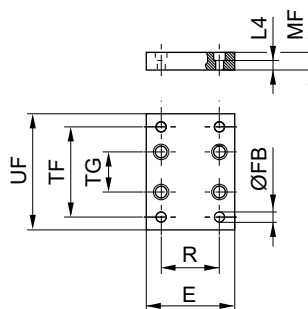
Material: Steel
Surface: galvanized

Flange mounting

► for Series for guide units, H' version



00106403



00106476

Part No.	Piston Ø	For series	E	Ø FB	L4	MF	R	TF	TG	UF		
1821038079	32	for guide units H' version	50	6.6	4.5	10	32.5	116	61	130		
1821038080	40	for guide units H' version	55	9	4.5	10	38	140	69	160		
1821038081	50	for guide units H' version	70	9	6	12	46.5	160	85	180		
1821038082	63	for guide units H' version	80	9	6	12	56.5	175	100	195		
1821038083	80	for guide units H' version	100	12	9	16	72	218	130	242		
1821038084	100	for guide units H' version	120	14	9	16	89	245	150	272		

Material: Steel
Surface: galvanized

Part numbers marked in bold are available from the central warehouse in Germany, see the shopping basket for more detailed information

Pneumatics catalog, online PDF, as of 2017-03-29, ©AVENTICS S.à r.l., subject to change

AVENTICS GmbH
Ulmer Straße 4
30880 Laatzen, GERMANY
Phone +49 511 2136-0
Fax +49 511 2136-269
www.aventics.com
info@aventics.com



Find more contact information at
www.aventics.com/contact

Only use the AVENTICS products shown in industrial applications. Read the product documentation completely and carefully before using the product. Observe the applicable regulations and laws of the respective country. When integrating the product into applications, note the system manufacturer's specifications for safe use of the product. The data specified only serve to describe the product. No statements concerning a certain condition or suitability for a certain application can be derived from our information. The information given does not release the user from the obligation of own judgment and verification. It must be remembered that the products are subject to a natural process of wear and aging.

29-03-2017

An example configuration is depicted on the title page. The delivered product may thus vary from that in the illustration. Subject to change. © AVENTICS S.à r.l.
This document, as well as the data, specifications and other information set forth in it, are the exclusive property of AVENTICS S.à r.l.. It may not be reproduced or given to third parties without its consent. PDF online