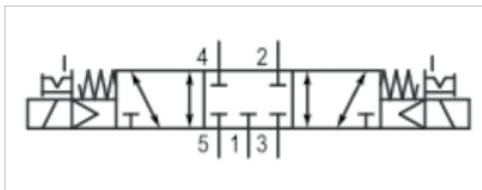



# 5/3-directional valve, Series CD07

- 5/3
- $Q_n = 900 \text{ l/min}$
- Pilot valve width : 30 mm
- closed center
- Pipe connection
- Compressed air connection output : M14x1,5
- Electrical connection : Plug, EN 175301-803, form A, 3-pin
- -30 °C cold-resistant
- Manual override : with detent
- double solenoid
- With spring return
- Pilot : Internal



Type	Spool valve, positive overlapping
Activation	Electrically
Pilot	Internal
Sealing principle	Soft sealing
Working pressure min./max.	3,5 ... 10 bar
Control pressure min./max.	3,5 ... 10 bar
Ambient temperature min./max.	-30 ... 70 °C
Medium temperature min./max.	-30 ... 70 °C
Medium	Compressed air
Max. particle size	50 µm
Oil content of compressed air	0 ... 1 mg/m <sup>3</sup>
Nominal flow $Q_n$	900 l/min
Nominal flow 1 ► 2	900 l/min
Nominal flow 2 ► 3	900 l/min
Pilot control exhaust	with directional pilot air exhaust
Connector standard	EN 175301-803:2006
Protection class with connection	IP65
Reverse polarity protection	Protected against polarity reversal
Compatibility index	14
Duty cycle	100 %
Typ. switch-on time	25 ms
Typ. switch-off time	55 ms
Mounting on manifold strip	P-strip PRS strip
Weight	0,72 kg

## Technical data

Part No.	MO		Compressed air connection
			Input
5776920270		closed center	M14x1,5

Part No.	Compressed air connection	Compressed air connection
	Output	Exhaust
5776920270	M14x1,5	M14x1,5

Part No.	Compressed air connection	Operational voltage	Voltage tolerance
	Pilot Exhaust	DC	DC
5776920270	M5	110 V	-30% / +30%

Part No.	Power consumption
	DC
5776920270	6 W

Nominal flow Q<sub>n</sub> at 6 bar and Δp = 1 bar, MO = Manual override

## Technical information

The min. control pressure must be adhered to, since otherwise faulty switching and valve failure may result!

The pressure dew point must be at least 15 °C under ambient and medium temperature and may not exceed 3 °C .

The oil content of compressed air must remain constant during the life cycle.

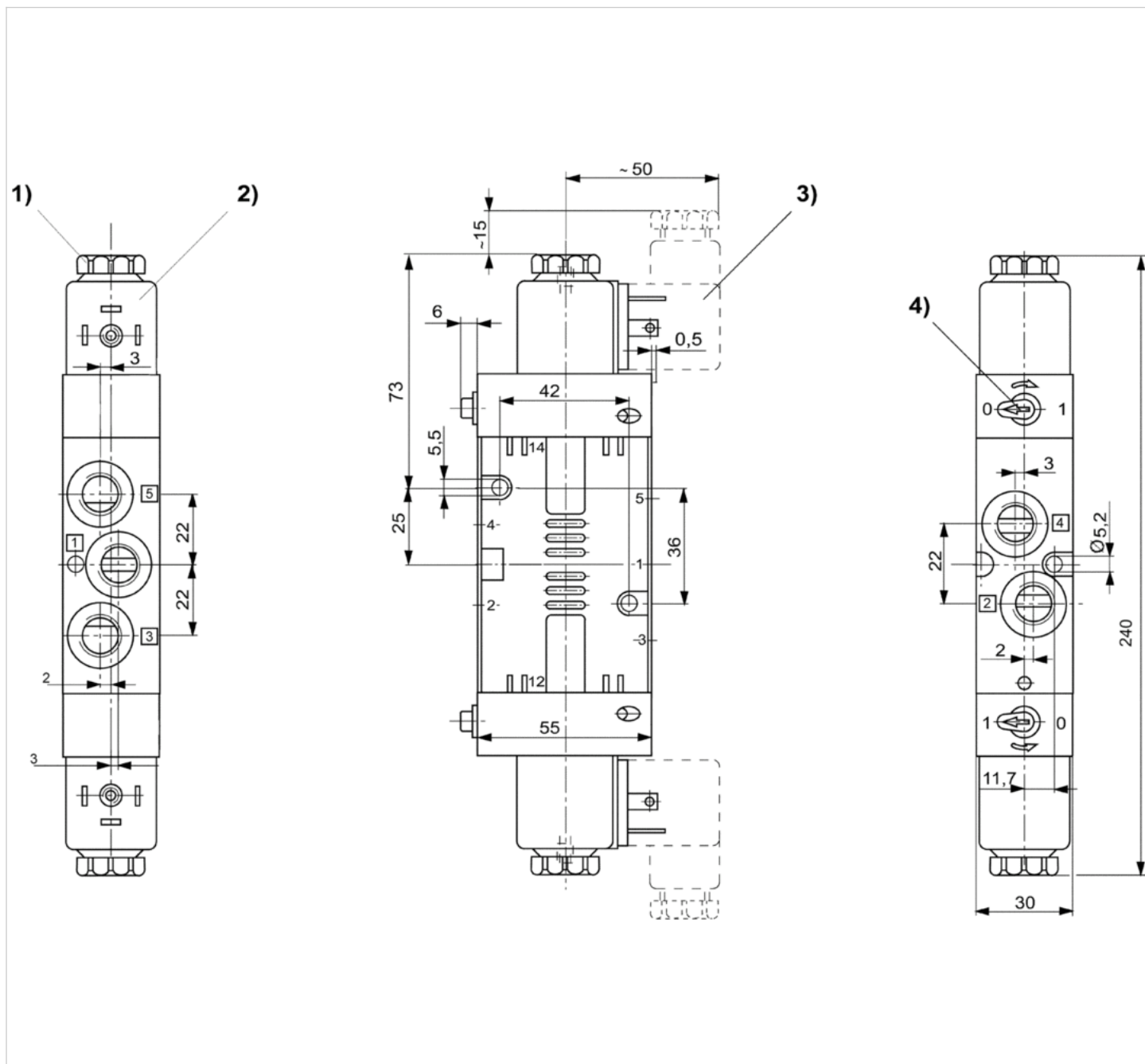
Use only the approved oils from AVENTICS. Further information can be found in the "Technical information" document (available in the MediaCentre).

## Technical information

Material	
Housing	Die cast zinc Polyamide fiber-glass reinforced
Seals	Polyurethane

## Dimensions

### Dimensions



1) After removal of cap M5 internal thread 2) Coil can be plugged at 45° intervals 3) Valve plug connector 4) Manual override

# Efficient pneumatic solutions, our program: cylinders and drives, valves and valve systems, air supply management



Visit us: [Emerson.com/Aventics](https://www.emerson.com/Aventics)

Your local contact: [Emerson.com/contactus](https://www.emerson.com/contactus)



Emerson.com



Facebook.com/EmersonAutomationSolutions



LinkedIn.com/company/Emerson-Automation-Solutions



Twitter.com/EMR\_Automation

An example configuration is depicted on the title page. The delivered product may thus vary from that in the illustration. Subject to change. This Document, as well as the data, specifications and other information set forth in it, are the exclusive property of AVENTICS GmbH. It may not be reproduced or given to third parties without its consent. Only use the AVENTICS products shown in industrial applications. Read the product documentation completely and carefully before using the product. Observe the applicable regulations and laws of the respective country. When integrating the product into applications, note the system manufacturer's specifications for safe use of the product. The data specified only serve to describe the product. No statements concerning a certain condition or suitability for a certain application can be derived from our information. The information given does not release the user from the obligation of own judgement and verification. It must be remembered that the products are subject to a natural process of wear and aging.

The Emerson logo is a trademark and service mark of Emerson Electric Co. Brand logotype are registered trademarks of one of the Emerson family of companies. All other marks are the property of their respective owners. © 2020 Emerson Electric Co. All rights reserved.  
2020-12



## CONSIDER IT SOLVED™