



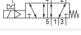



5/2-directional valve, Series CD07

- Valves with Namur port as per VDI/VDE3845
- 5/2
- Qn = 1200 l/min
- Pilot valve width : 30 mm
- Pipe connection
- Compressed air connection output : Namur base plate
- Electrical connection : Plug, EN 175301-803, form A, 3-pin
- -25 °C cold-resistant
- Manual override : with detent
- single solenoid
- With spring return
- Pilot : Internal



Type	Spool valve, positive overlapping
Activation	Electrically
Pilot	Internal
Sealing principle	Soft sealing
Standards	NAMUR
Working pressure min./max.	3 ... 10 bar
Control pressure min./max.	3 ... 10 bar
Ambient temperature min./max.	-25 ... 50 °C
Medium temperature min./max.	-25 ... 50 °C
Medium	Compressed air
Max. particle size	50 µm
Oil content of compressed air	0 ... 1 mg/m³
Nominal flow Qn	1200 l/min
Nominal flow 1 ► 2	1200 l/min
Nominal flow 2 ► 3	1200 l/min
Compressed air connection	according to ISO 228-1
Pilot control exhaust	with directional pilot air exhaust
Connector standard	EN 175301-803:2006
Reverse polarity protection	Protected against polarity reversal
Compatibility index	13 14
Duty cycle	100 %
Weight	See table below

Technical data

Part No.		MO	Compressed air connection	
			Input	Output
5776600220			G 1/4	Namur base plate
5776605280			G 1/4	Namur base plate
5776605302			G 1/4	Namur base plate

Part No.	Compressed air connection	
	Exhaust	Pilot Exhaust
5776600220	G 1/4	M5
5776605280	G 1/4	M5
5776605302	G 1/4	M5

Part No.	Operational voltage		Operational voltage
	DC	AC 50 Hz	AC 60 Hz
5776600220	24 V	-	-
5776605280	-	230 V	230 V
5776605302	-	-	-

Part No.	Voltage tolerance	Voltage tolerance	Voltage tolerance	Power consumption
	DC	AC 50 Hz	AC 60 Hz	DC
5776600220	-10% / +10%	-	-	2,1 W
5776605280	-	-20% / +10%	-10% / +20%	-
5776605302	-	-	-	-

Part No.	Holding power	Holding power	Switch-on power	Switch-on power
	AC 50 Hz	AC 60 Hz	AC 50 Hz	AC 60 Hz
5776600220	-	-	-	-
5776605280	4,8 VA	4,1 VA	6,9 VA	5,8 VA
5776605302	-	-	-	-

Part No.	Typ. switch-on time	Typ. switch-off time	Protection class	basic valve with electrical connector
			with connection	
5776600220	25 ms	45 ms	IP65	-
5776605280	25 ms	45 ms	IP65	-
5776605302	-	-	-	Basic valve without coil

Part No.	ATEX	Weight
5776600220	-	0,6 kg
5776605280	-	0,6 kg
5776605302	ATEX optional	-

Nominal flow Q_n at 6 bar and Δp = 1 bar, MO = Manual override

Technical information

The min. control pressure must be adhered to, since otherwise faulty switching and valve failure may result!
The pressure dew point must be at least 15 °C under ambient and medium temperature and may not exceed 3 °C .
The oil content of compressed air must remain constant during the life cycle.
Use only the approved oils from AVENTICS. Further information can be found in the “Technical information” document (available in the MediaCentre).

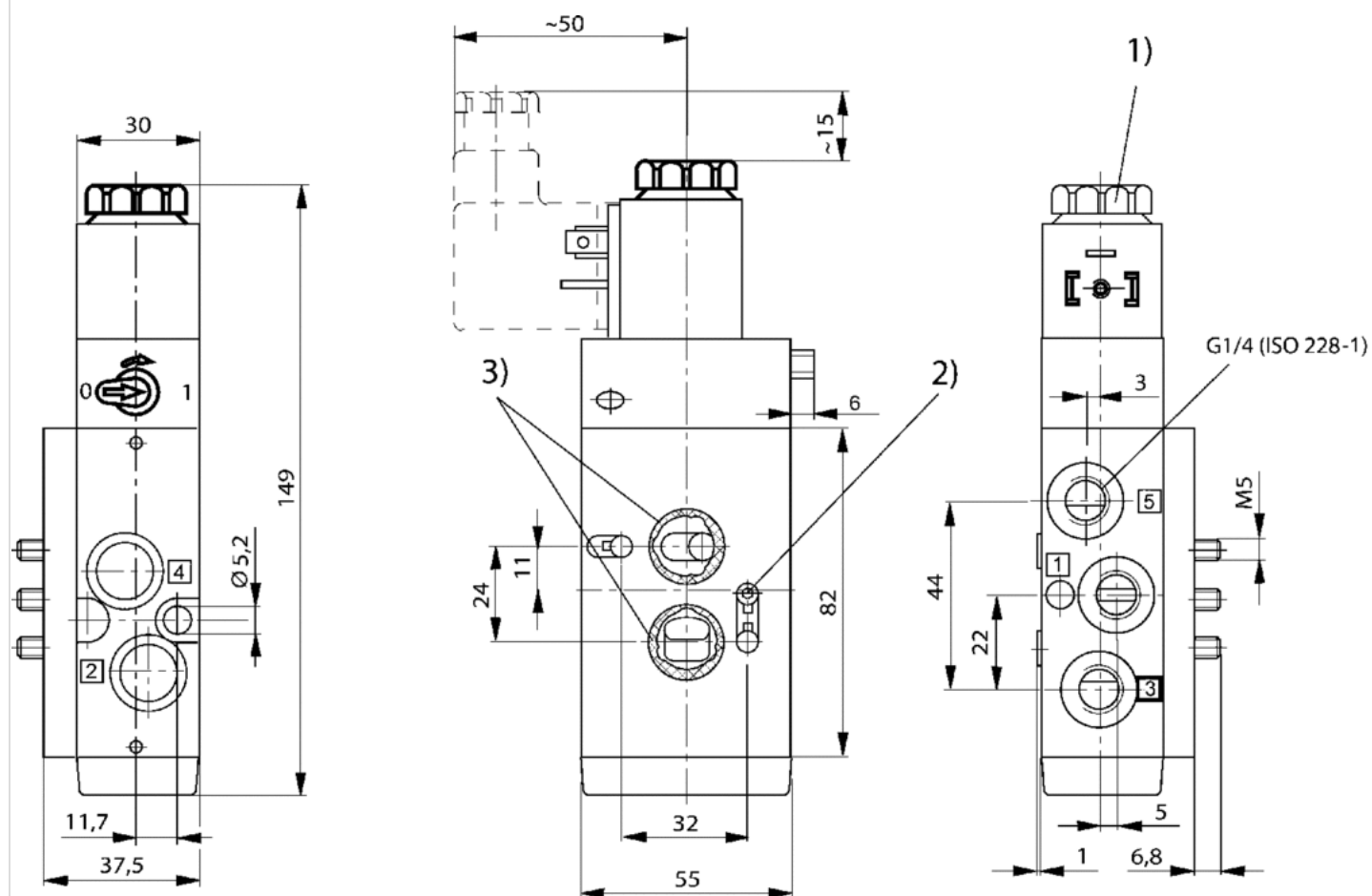
ATEX optional: ATEX version can be produced by combining the basic valve without coil with an ATEX coil. ATEX ID: see ATEX coils catalog page.

Technical information

Material	
Housing	Polyamide fiber-glass reinforced Die cast zinc
Seals	Acrylonitrile butadiene rubber

Dimensions

Dimensions



1) after removal of cap M 5 internal thread 2) threaded pin DIN 914 M5 x 20 3) O-ring 16 x 2 (included)

Efficient pneumatic solutions, our program: cylinders and drives, valves and valve systems, air supply management



Visit us: [Emerson.com/Aventics](https://www.emerson.com/Aventics)

Your local contact: [Emerson.com/contactus](https://www.emerson.com/contactus)



Emerson.com



Facebook.com/EmersonAutomationSolutions



LinkedIn.com/company/Emerson-Automation-Solutions



Twitter.com/EMR_Automation

An example configuration is depicted on the title page. The delivered product may thus vary from that in the illustration. Subject to change. This Document, as well as the data, specifications and other information set forth in it, are the exclusive property of AVENTICS GmbH. It may not be reproduced or given to third parties without its consent. Only use the AVENTICS products shown in industrial applications. Read the product documentation completely and carefully before using the product. Observe the applicable regulations and laws of the respective country. When integrating the product into applications, note the system manufacturer's specifications for safe use of the product. The data specified only serve to describe the product. No statements concerning a certain condition or suitability for a certain application can be derived from our information. The information given does not release the user from the obligation of own judgement and verification. It must be remembered that the products are subject to a natural process of wear and aging.

The Emerson logo is a trademark and service mark of Emerson Electric Co. Brand logotype are registered trademarks of one of the Emerson family of companies. All other marks are the property of their respective owners. © 2021 Emerson Electric Co. All rights reserved.
2021-10



CONSIDER IT SOLVED™