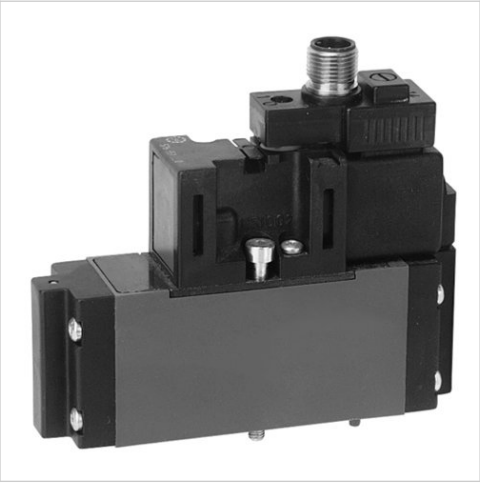



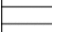




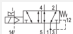

5/2-directional valve, Series CD01-PA

- ISO 15407-1
- 26 mm
- 5/2
- ISO 15407-1, 26 mm
- With air spring return With spring/air spring return
- single solenoid
- Qn = 1010 l/min
- Compressed air connection output base plate DIN ISO 15407-1
- Electrical connection Plug, M12x1, 4-pin
- Manual override without detent with detent



Type	Spool valve, positive overlapping
Sealing principle	Soft sealing
Connection type	Plate connection
Standards	ISO 15407-1, 26 mm
Certificates	Free of substances that impair surface wetting in the coating process
Working pressure min./max.	See table below
Control pressure min./max.	See table below
Ambient temperature min./max.	-15 ... 50 °C
Medium temperature min./max.	-15 ... 50 °C
Medium	Compressed air
Max. particle size	50 µm
Oil content of compressed air	0 ... 5 mg/m³
Nominal flow Qn	1010 l/min
Compressed air connection	according to ISO 15407-1
Protection class with connection	IP65
Protective circuit	43 V bi-directional
LED status display	Yellow
Duty cycle	100 %
Typ. switch-on time	See table below
Typ. switch-off time	See table below
Mounting screw	M4 with hexagon socket
Mounting screw tightening torque	2,5 Nm
Weight	0,23 kg

Technical data

Part No.		MO	Operational voltage DC	Voltage tolerance DC
5763510720			24 V	-10% / +10%
5763510520			24 V	-10% / +10%
5763600720			24 V	-10% / +10%
5763600520			24 V	-10% / +10%

Part No.	Power consumption DC	Pilot	Nominal flow 1 ► 2	Nominal flow 2 ► 3
5763510720	1,6 W	Internal	1010 l/min	1010 l/min
5763510520	1,6 W	Internal	1010 l/min	1010 l/min
5763600720	1,6 W	External	1010 l/min	1010 l/min
5763600520	1,6 W	External	1010 l/min	1010 l/min

Part No.	Working pressure min./max.	Control pressure min./max.	Typ. switch-on time
5763510720	3 ... 10 bar	3 ... 10 bar	29 ms
5763510520	3 ... 10 bar	3 ... 10 bar	29 ms
5763600720	0 ... 16 bar	10 bar	34 ms
5763600520	0 ... 16 bar	10 bar	34 ms

Part No.	Typ. switch-off time	Electrical connection Pilot valve	
5763510720	42 ms	Plug M12x1 4-pin	-
5763510520	42 ms	Plug M12x1 4-pin	-
5763600720	35 ms	Plug M12x1 4-pin	1)
5763600520	35 ms	Plug M12x1 4-pin	1)

Nominal flow Q_n with secondary pressure 6 bar at Δp = 1 bar, MO = Manual override

1) External control pressure: see diagram

Technical information

The min. control pressure must be adhered to, since otherwise faulty switching and valve failure may result!

The pressure dew point must be at least 15 °C under ambient and medium temperature and may not exceed 3 °C .

The oil content of compressed air must remain constant during the life cycle.

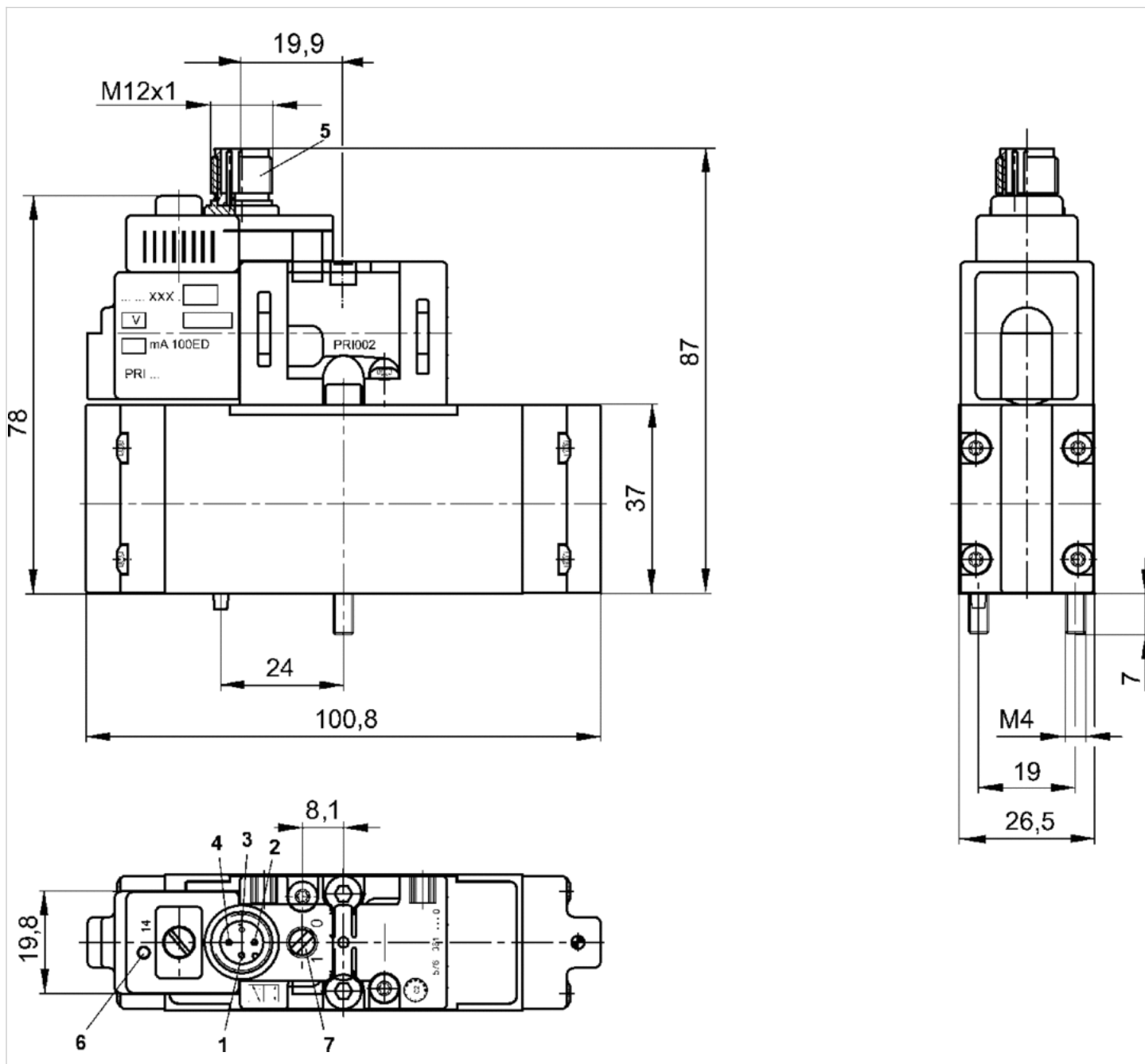
Use only the approved oils from AVENTICS. Further information can be found in the "Technical information" document (available in the MediaCentre).

Technical information

Housing	Polyamide Polyoxymethylene
Seals	Acrylonitrile butadiene rubber

Dimensions

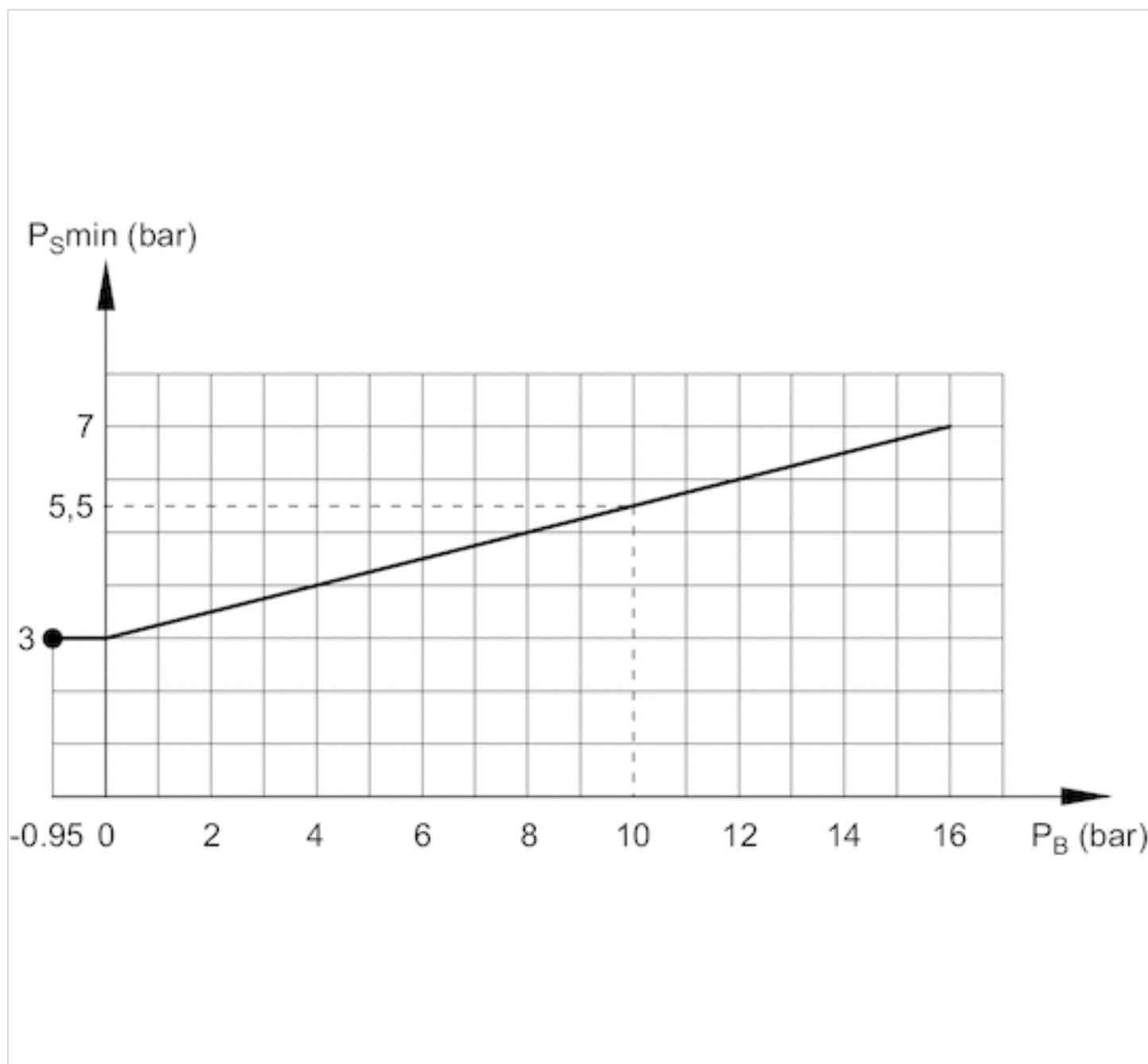
Dimensions



1) not assigned 2) not assigned 12 3) 0 V 4) magnet 14 5) metal round plug M12x1 6) yellow valve switching state LED 7) manual override

Diagrams

Minimum control pressure for externally piloted valves (depending on the working pressure)



PB= Working pressure

PS = control pressure

Efficient pneumatic solutions, our program: cylinders and drives, valves and valve systems, air supply management



Visit us: [Emerson.com/Aventics](https://www.emerson.com/Aventics)

Your local contact: [Emerson.com/contactus](https://www.emerson.com/contactus)



Emerson.com



Facebook.com/EmersonAutomationSolutions



LinkedIn.com/company/Emerson-Automation-Solutions



Twitter.com/EMR_Automation

An example configuration is depicted on the title page. The delivered product may thus vary from that in the illustration. Subject to change. This Document, as well as the data, specifications and other information set forth in it, are the exclusive property of AVENTICS GmbH. It may not be reproduced or given to third parties without its consent. Only use the AVENTICS products shown in industrial applications. Read the product documentation completely and carefully before using the product. Observe the applicable regulations and laws of the respective country. When integrating the product into applications, note the system manufacturer's specifications for safe use of the product. The data specified only serve to describe the product. No statements concerning a certain condition or suitability for a certain application can be derived from our information. The information given does not release the user from the obligation of own judgement and verification. It must be remembered that the products are subject to a natural process of wear and aging.

The Emerson logo is a trademark and service mark of Emerson Electric Co. Brand logotype are registered trademarks of one of the Emerson family of companies. All other marks are the property of their respective owners. © 2020 Emerson Electric Co. All rights reserved.
2020-12



CONSIDER IT SOLVED™