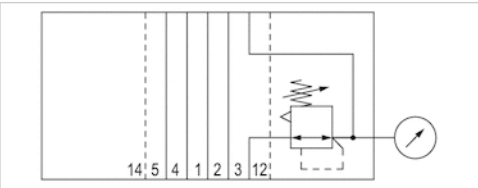


# Pressure regulator for vertical stacking

- Qn 1►2 = 750 l/min
- standard ISO 15407-1
- Actuating element Screw with wrench flats
- Controlled port 3
- Poppet valve



|                               |   |
|-------------------------------|---|
| Type                          | Poppet valve  |
| Certificates                  | Free of substances that impair surface wetting in the coating process |
| Working pressure min./max.    | 2 ... 10 bar  |
| Adjustment range min./max.    | See table below   |
| Ambient temperature min./max. | -15 ... 50 °C   |
| Medium temperature min./max.  | -15 ... 50 °C   |
| Medium                        | Compressed air  |
| Max. particle size            | 50 µm   |
| Oil content of compressed air | 0 ... 1 mg/m³   |
| Weight                        | 0,2 kg  |

## Technical data

| Part No.   | Compressed air connection Exhaust | Compressed air connection Gauge port | Adjustment range min./max. |
|------------|-----------------------------------|--------------------------------------|----------------------------|
| 5750020510 | base plate DIN ISO 15407-1        | Ø 6x1                                | 0,8 ... 8 bar              |
| 5750020520 | base plate DIN ISO 15407-1        | Ø 6x1                                | 3 ... 3 bar                |

| Part No.   | Flow      | Actuating element       | Controlled port | Fig.   |
|------------|-----------|-------------------------|-----------------|--------|
|            | Qn 1►2    |                         |                 |        |
| 5750020510 | 750 l/min | Screw with wrench flats | 3               | Fig. 1 |
| 5750020520 | 750 l/min | -                       | 3               | Fig. 2 |

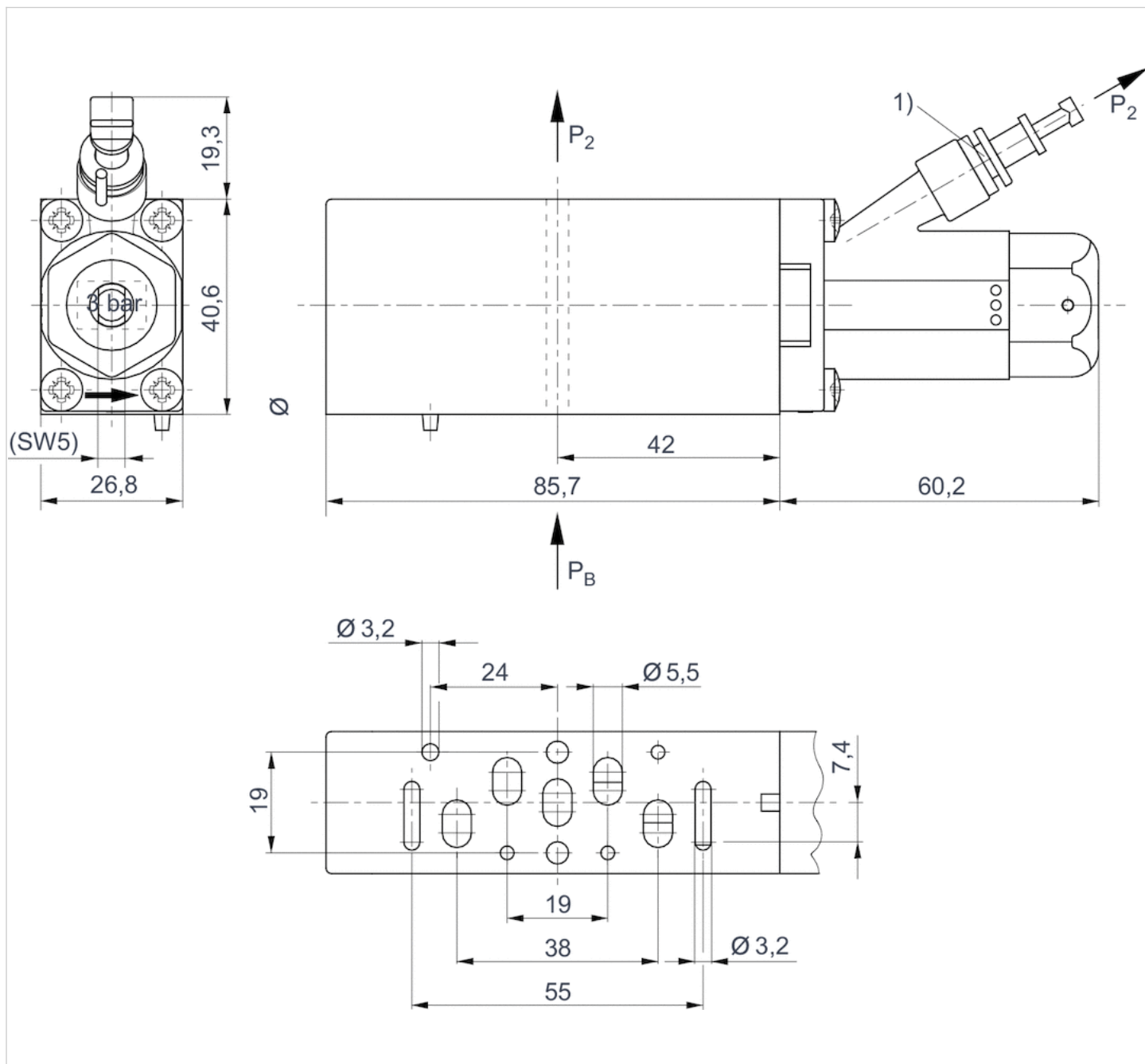
Nominal flow with secondary pressure 6.3 bar at Δp = 1 bar, Scope of delivery incl. seal and mounting screws, Order pressure gauge separately

## Technical information

| Material |   |
|----------|---|
| Housing  | Polyamide fiber-glass reinforced Polyoxymethylene |
| Seals    | Acrylonitrile butadiene rubber                    |

## Dimensions

Fig. 1

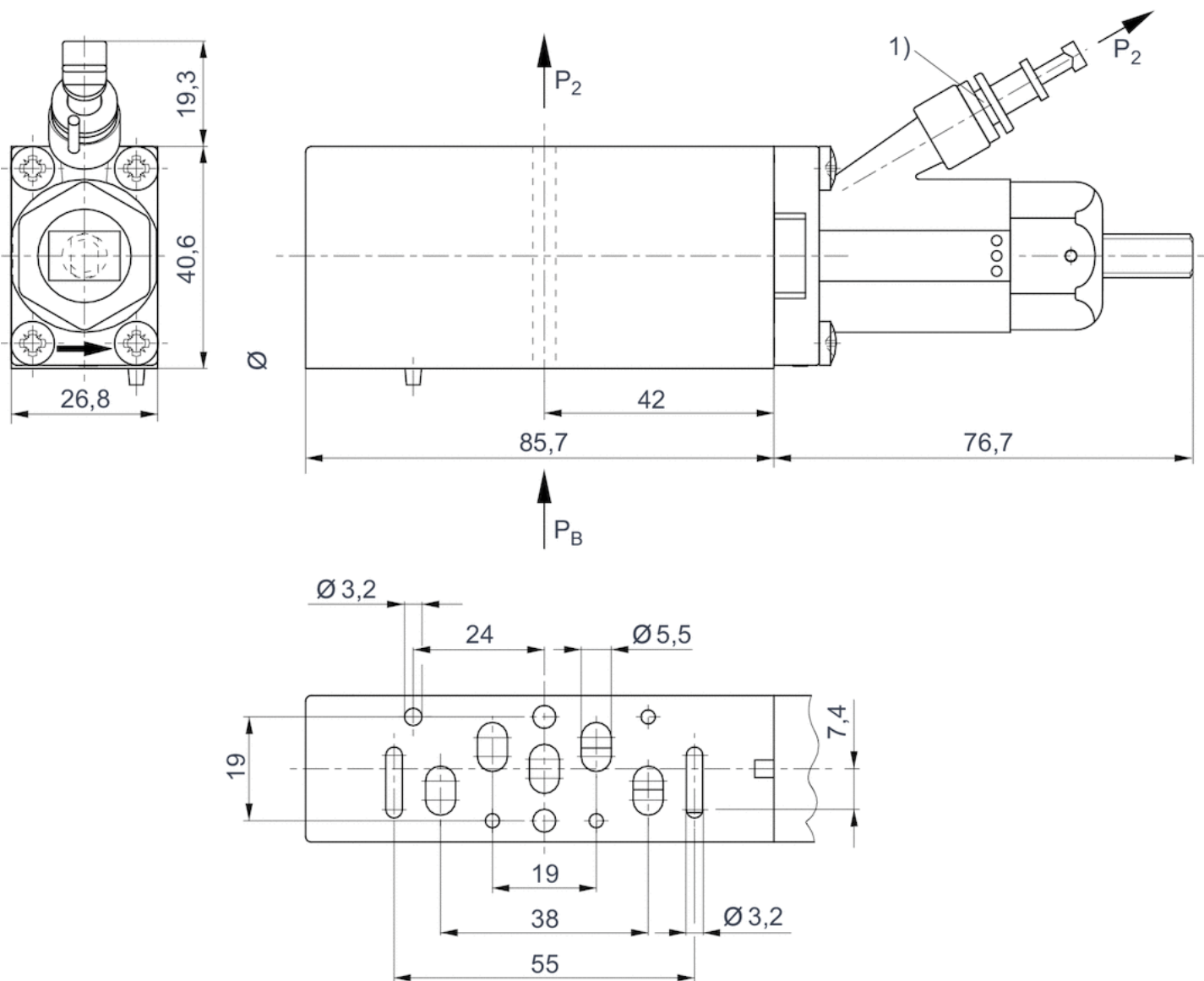


1) push-in fitting Ø 6x1 (for pressure gauge) 2) preset at 3 bar

p2 = secondary pressure

PB= Working pressure

Fig. 2



1) Push-in fitting  $\varnothing 6 \times 1$  (for gauge)

$p_2$  = secondary pressure

$P_B$  = Working pressure

# Efficient pneumatic solutions, our program: cylinders and drives, valves and valve systems, air supply management



Visit us: [Emerson.com/Aventics](https://www.emerson.com/Aventics)

Your local contact: [Emerson.com/contactus](https://www.emerson.com/contactus)



Emerson.com



Facebook.com/EmersonAutomationSolutions



LinkedIn.com/company/Emerson-Automation-Solutions



Twitter.com/EMR\_Automation

An example configuration is depicted on the title page. The delivered product may thus vary from that in the illustration. Subject to change. This Document, as well as the data, specifications and other information set forth in it, are the exclusive property of AVENTICS GmbH. It may not be reproduced or given to third parties without its consent. Only use the AVENTICS products shown in industrial applications. Read the product documentation completely and carefully before using the product. Observe the applicable regulations and laws of the respective country. When integrating the product into applications, note the system manufacturer's specifications for safe use of the product. The data specified only serve to describe the product. No statements concerning a certain condition or suitability for a certain application can be derived from our information. The information given does not release the user from the obligation of own judgement and verification. It must be remembered that the products are subject to a natural process of wear and aging.

The Emerson logo is a trademark and service mark of Emerson Electric Co. Brand logotype are registered trademarks of one of the Emerson family of companies. All other marks are the property of their respective owners. © 2020 Emerson Electric Co. All rights reserved.  
2020-12



## CONSIDER IT SOLVED™