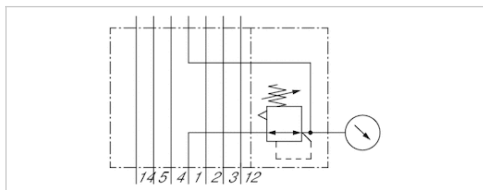


Pressure regulator for vertical stacking

- Qn 1►2 = 750 l/min
- Actuating element Screw with wrench flats
- Base plate connection
- Controlled port 1
- Poppet valve



Type	Poppet valve
Certificates	Free of substances that impair surface wetting in the coating process
Working pressure min./max.	2 ... 10 bar
Adjustment range min./max.	See table below
Ambient temperature min./max.	-15 ... 50 °C
Medium temperature min./max.	-15 ... 50 °C
Medium	Compressed air
Max. particle size	50 µm
Oil content of compressed air	0 ... 1 mg/m³
Weight	0,21 kg



Technical data

Part No.	Compressed air connection Input	Compressed air connection type Input
5750020500	base plate DIN ISO 15407-1	Base plate connection
R412003719	base plate DIN ISO 15407-1	Base plate connection
5750020530	base plate DIN ISO 15407-1	Base plate connection

Part No.	Compressed air connection Gauge port	Adjustment range min./max.	Flow
			Qn 1►2
5750020500	Ø 6x1	0,8 ... 8 bar	750 l/min
R412003719	Ø 6x1	0,5 ... 4 bar	750 l/min
5750020530	Ø 6x1	3 ... 3 bar	750 l/min

Part No.	Actuating element	Controlled port	Fig.
5750020500	Screw with wrench flats	1	Fig. 2
R412003719	Screw with wrench flats	1	Fig. 2
5750020530	-	1	Fig. 1

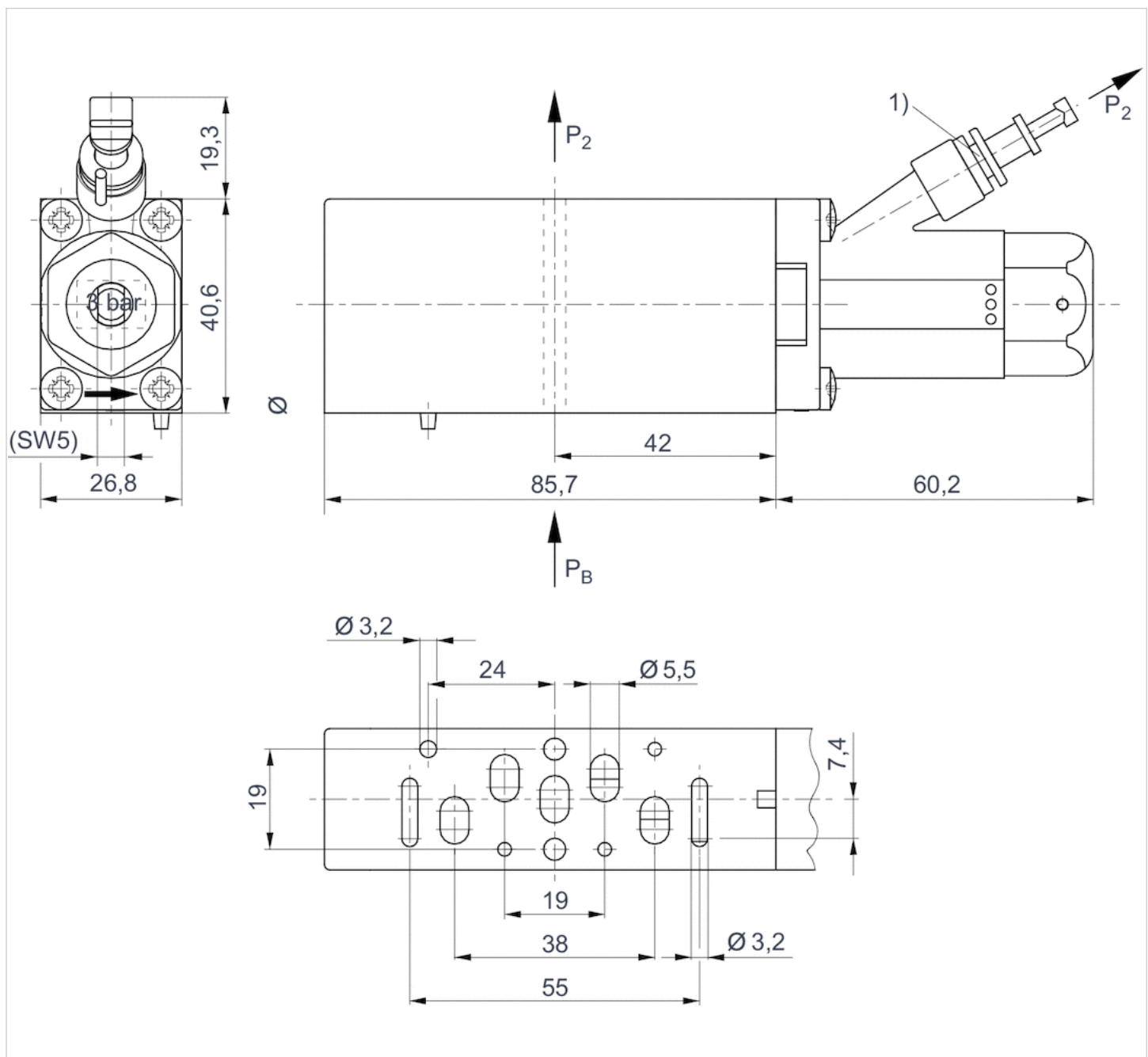
Nominal flow with secondary pressure 6.3 bar at $\Delta p = 1$ bar, Scope of delivery incl. seal and mounting screws, Order pressure gauge separately

Technical information

Material	
Housing	Polyamide fiber-glass reinforced Polyoxymethylene
Seals	Acrylonitrile butadiene rubber

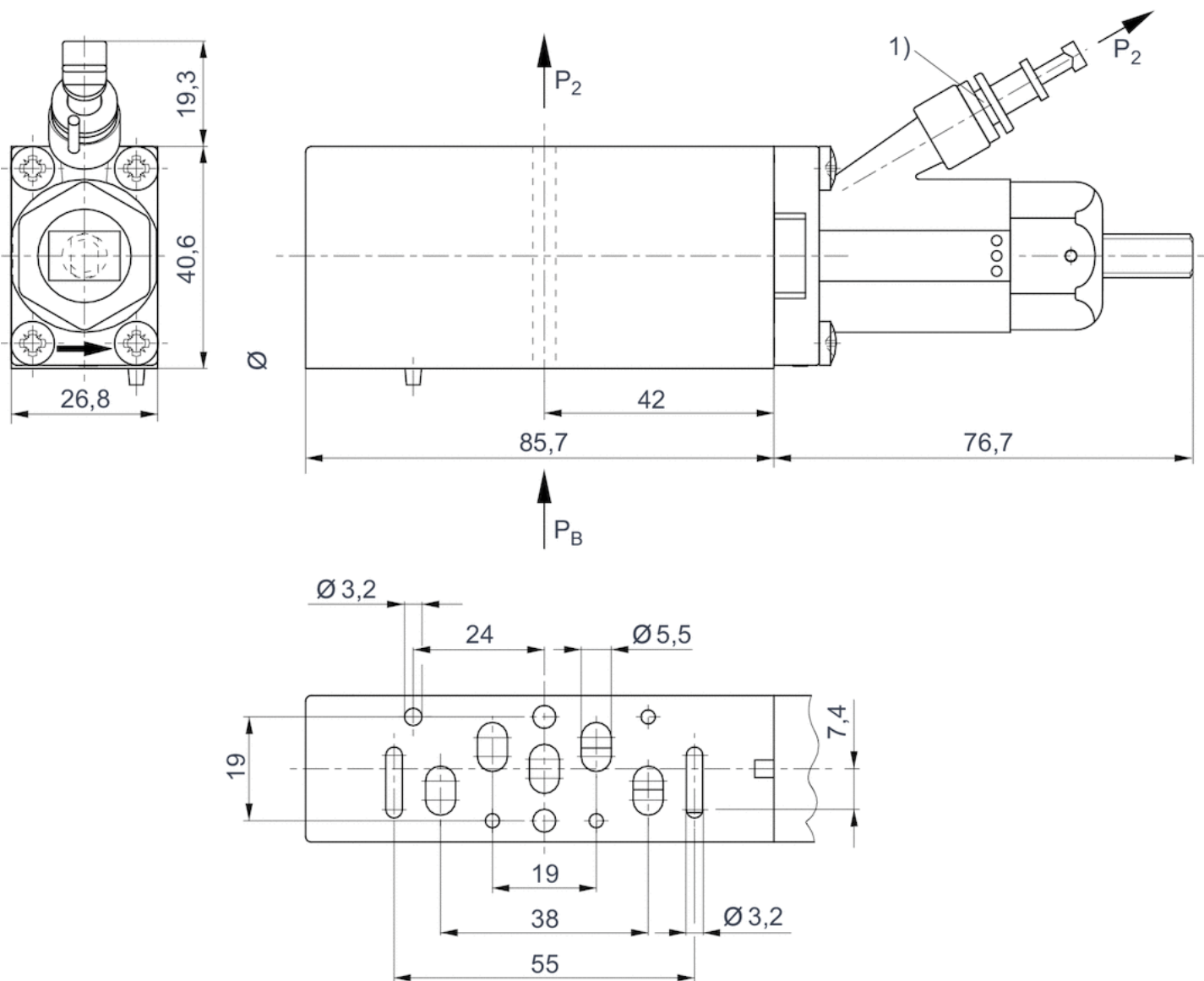
Dimensions

Fig. 1



1) push-in fitting $\varnothing 6 \times 1$ (for pressure gauge) 2) preset at 3 bar
 p_2 = secondary pressure
 P_B = Working pressure

Fig. 2



1) Push-in fitting $\varnothing 6 \times 1$ (for gauge)

p_2 = secondary pressure

P_B = Working pressure

Efficient pneumatic solutions, our program: cylinders and drives, valves and valve systems, air supply management



Visit us: [Emerson.com/Aventics](https://www.emerson.com/Aventics)

Your local contact: [Emerson.com/contactus](https://www.emerson.com/contactus)



Emerson.com



Facebook.com/EmersonAutomationSolutions



LinkedIn.com/company/Emerson-Automation-Solutions



Twitter.com/EMR_Automation

An example configuration is depicted on the title page. The delivered product may thus vary from that in the illustration. Subject to change. This Document, as well as the data, specifications and other information set forth in it, are the exclusive property of AVENTICS GmbH. It may not be reproduced or given to third parties without its consent. Only use the AVENTICS products shown in industrial applications. Read the product documentation completely and carefully before using the product. Observe the applicable regulations and laws of the respective country. When integrating the product into applications, note the system manufacturer's specifications for safe use of the product. The data specified only serve to describe the product. No statements concerning a certain condition or suitability for a certain application can be derived from our information. The information given does not release the user from the obligation of own judgement and verification. It must be remembered that the products are subject to a natural process of wear and aging.

The Emerson logo is a trademark and service mark of Emerson Electric Co. Brand logotype are registered trademarks of one of the Emerson family of companies. All other marks are the property of their respective owners. © 2020 Emerson Electric Co. All rights reserved.
2020-12



CONSIDER IT SOLVED™