





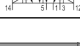
# 5/2-directional valve, Series CD12

- 5/2
- Qn = 4100 l/min
- Pilot valve width : 30 mm
- Pipe connection
- Compressed air connection output : M22x1,5
- Electrical connection : Plug, EN 175301-803, form A, 3-pin
- -25 °C cold-resistant
- Manual override : with detent, without detent
- double solenoid
- Pilot : Internal External



Type	Spool valve, positive overlapping
Activation	Electrically
Sealing principle	Soft sealing
Working pressure min./max.	See table below
Control pressure min./max.	See table below
Ambient temperature min./max.	See table below
Medium temperature min./max.	See table below
Medium	Compressed air
Max. particle size	50 µm
Oil content of compressed air	0 ... 1 mg/m³
Nominal flow Qn	4100 l/min
Pilot control exhaust	with directional pilot air exhaust
Connector standard	EN 175301-803:2006
Reverse polarity protection	Protected against polarity reversal
Compatibility index	See table below
Duty cycle	100 %
Weight	See table below

## Technical data

Part No.		MO	Compressed air connection	Compressed air connection
			Input	Output
5725500220		R-R-TT-R-TT-R-	M22x1,5	M22x1,5
5725505270			M22x1,5	M22x1,5
5725505280			M22x1,5	M22x1,5
5725505202		-	M22x1,5	M22x1,5
R412000244		-	M22x1,5	M22x1,5

Part No.	Compressed air connection	Compressed air connection
	Exhaust	Pilot Input
5725500220	M22x1,5	-
5725505270	M22x1,5	-
5725505280	M22x1,5	-
5725505202	M22x1,5	-
R412000244	M22x1,5	G 1/8

Part No.	Compressed air connection	Operational voltage	Operational voltage
	Pilot Exhaust	DC	AC 50 Hz
5725500220	M5	24 V	-
5725505270	M5	-	110 V
5725505280	M5	-	230 V
5725505202	-	-	-
R412000244	-	-	-

Part No.	Operational voltage	Voltage tolerance	Voltage tolerance	Voltage tolerance
	AC 60 Hz	DC	AC 50 Hz	AC 60 Hz
5725500220	-	-10% / +10%	-	-
5725505270	110 V	-	-20% / +10%	-10% / +20%
5725505280	230 V	-	-20% / +10%	-10% / +20%
5725505202	-	-	-	-
R412000244	-	-	-	-

Part No.	Power consumption	Holding power	Holding power	Switch-on power
	DC	AC 50 Hz	AC 60 Hz	AC 50 Hz
5725500220	2,1 W	-	-	-
5725505270	-	4,3 VA	3,3 VA	6,8 VA
5725505280	-	4,4 VA	3,5 VA	6,9 VA
5725505202	-	-	-	-
R412000244	-	-	-	-

Part No.	Switch-on power	Pilot	Working pressure min./max.	Control pressure min./max.
	AC 60 Hz			
5725500220	-	Internal	2 ... 10 bar	2 ... 16 bar
5725505270	5,7 VA	Internal	2 ... 10 bar	2 ... 10 bar
5725505280	6,2 VA	Internal	2 ... 10 bar	2 ... 10 bar
5725505202	-	Internal	2 ... 16 bar	2 ... 16 bar
R412000244	-	External	-0,95 ... 16 bar	2 ... 16 bar

Part No.	Ambient temperature min./max.	Medium temperature min./max.	Typ. switch-on time
5725500220	-25 ... 50 °C	-25 ... 50 °C	36 ms
5725505270	-25 ... 50 °C	-25 ... 50 °C	36 ms
5725505280	-15 ... 50 °C	-15 ... 50 °C	36 ms
5725505202	-25 ... 70 °C	-25 ... 70 °C	-
R412000244	-25 ... 70 °C	-25 ... 70 °C	-

Part No.	Typ. switch-off time	Compatibility index	Protection class	basic valve with electrical connector
			with connection	
5725500220	36 ms	13 14	IP65	-
5725505270	36 ms	13 14	IP65	-
5725505280	36 ms	13 14	IP65	-
5725505202	-	-	-	Basic valve without pilot valve
R412000244	-	-	-	Basic valve without pilot valve

Part No.	Reverse polarity protection	ATEX	Weight
5725500220	Protected against polarity reversal	-	1,1 kg
5725505270	Protected against polarity reversal	-	1,1 kg
5725505280	Protected against polarity reversal	-	1,1 kg
5725505202	-	ATEX optional	0,8 kg
R412000244	-	ATEX optional	0,9 kg

Base valves without pilot valves can be combined with DO30 series valves., Nominal flow Qn at 6 bar and  $\Delta p = 1$  bar, MO = Manual override

## Technical information

The min. control pressure must be adhered to, since otherwise faulty switching and valve failure may result!

The pressure dew point must be at least 15 °C under ambient and medium temperature and may not exceed 3 °C .

The oil content of compressed air must remain constant during the life cycle.

Use only the approved oils from AVENTICS. Further information can be found in the "Technical information" document (available in the MediaCentre).

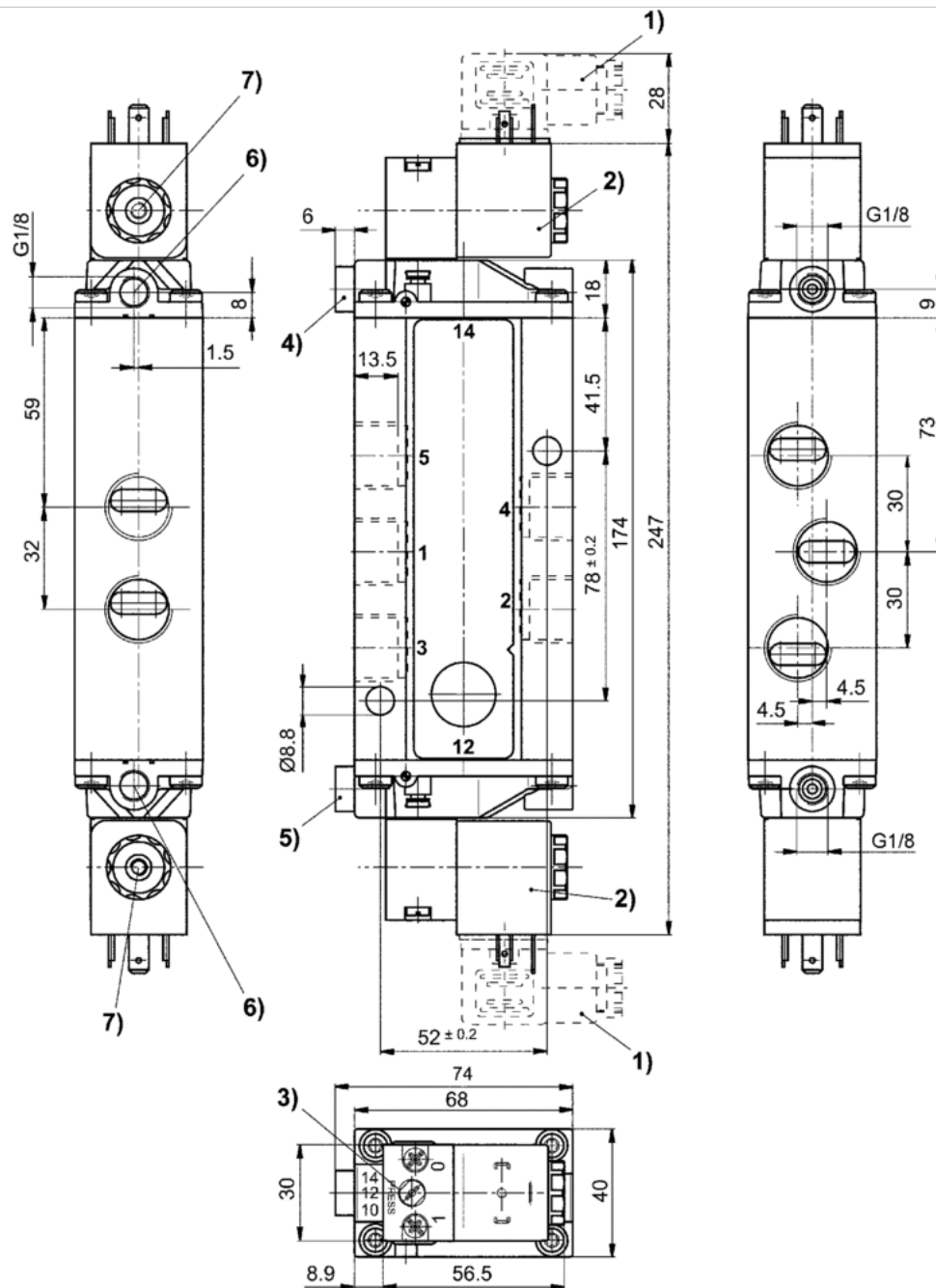
\*Note: Basic valves feature a maximum working pressure of 16 bar. When combined with standard CNOMO pilots, the maximum working pressure is 10 bar.

## Technical information

Material	
Housing	Aluminum Polyamide fiber-glass reinforced
Seals	Acrylonitrile butadiene rubber Polyurethane

## Dimensions

### Dimensions



1) Valve plug connector 2) Coil can be rotated at 90° intervals 3) Manual override 4) Port X, side 14 5) Port X, side 12 6) Port without function 7) Pilot valve exhaust, M5

# Efficient pneumatic solutions, our program: cylinders and drives, valves and valve systems, air supply management



Visit us: [Emerson.com/Aventics](https://www.emerson.com/Aventics)

Your local contact: [Emerson.com/contactus](https://www.emerson.com/contactus)



Emerson.com



Facebook.com/EmersonAutomationSolutions



LinkedIn.com/company/Emerson-Automation-Solutions



Twitter.com/EMR\_Automation

An example configuration is depicted on the title page. The delivered product may thus vary from that in the illustration. Subject to change. This Document, as well as the data, specifications and other information set forth in it, are the exclusive property of AVENTICS GmbH. It may not be reproduced or given to third parties without its consent. Only use the AVENTICS products shown in industrial applications. Read the product documentation completely and carefully before using the product. Observe the applicable regulations and laws of the respective country. When integrating the product into applications, note the system manufacturer's specifications for safe use of the product. The data specified only serve to describe the product. No statements concerning a certain condition or suitability for a certain application can be derived from our information. The information given does not release the user from the obligation of own judgement and verification. It must be remembered that the products are subject to a natural process of wear and aging.

The Emerson logo is a trademark and service mark of Emerson Electric Co. Brand logotype are registered trademarks of one of the Emerson family of companies. All other marks are the property of their respective owners. © 2020 Emerson Electric Co. All rights reserved.  
2020-12



## CONSIDER IT SOLVED™