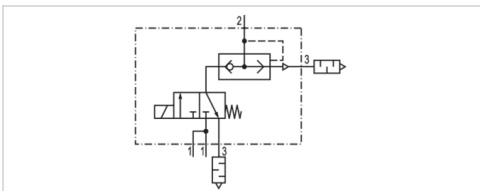


# 3/2-directional valve, Series 490

- 3/2
- NC
- Pipe connection
- Compressed air connection output : Ø 4
- Electrical connection : Plug, ISO 15217, form C
- single solenoid
- With spring return
- Pilot : Internal



|                                  |                           |
|----------------------------------|---------------------------|
| Type                             | Poppet valve              |
| Activation                       | Electrically              |
| Pilot                            | Internal                  |
| Sealing principle                | Soft sealing              |
| Working pressure min./max.       | 4 ... 7 bar               |
| Ambient temperature min./max.    | -15 ... 50 °C             |
| Medium temperature min./max.     | -15 ... 50 °C             |
| Medium                           | Compressed air            |
| Max. particle size               | 5 µm                      |
| Oil content of compressed air    | 0 ... 1 mg/m <sup>3</sup> |
| Nominal flow 1 ► 2               | 20 l/min                  |
| Nominal flow 2 ► 3               | 100 l/min                 |
| Protection class with connection | IP65                      |
| Duty cycle                       | 100 %                     |
| Typ. switch-on time              | 16 ms                     |
| Weight                           | 0,079 kg                  |

## Technical data

| Part No.   | NC | Compressed air connection |        |
|------------|----|---------------------------|--------|
|            |    | Input                     | Output |
| 5724970220 | NC | Ø 8                       | Ø 4    |

| Part No.   | Operational voltage | Voltage tolerance | Power consumption |
|------------|---------------------|-------------------|-------------------|
|            |                     |                   |                   |
| 5724970220 | 24 V                | -20% / +20%       | 2 W               |

Nominal flow Q<sub>n</sub> at 6 bar and Δp = 1 bar

## Technical information

The min. control pressure must be adhered to, since otherwise faulty switching and valve failure may result!

The pressure dew point must be at least 15 °C under ambient and medium temperature and may not exceed 3 °C .

The oil content of compressed air must remain constant during the life cycle.

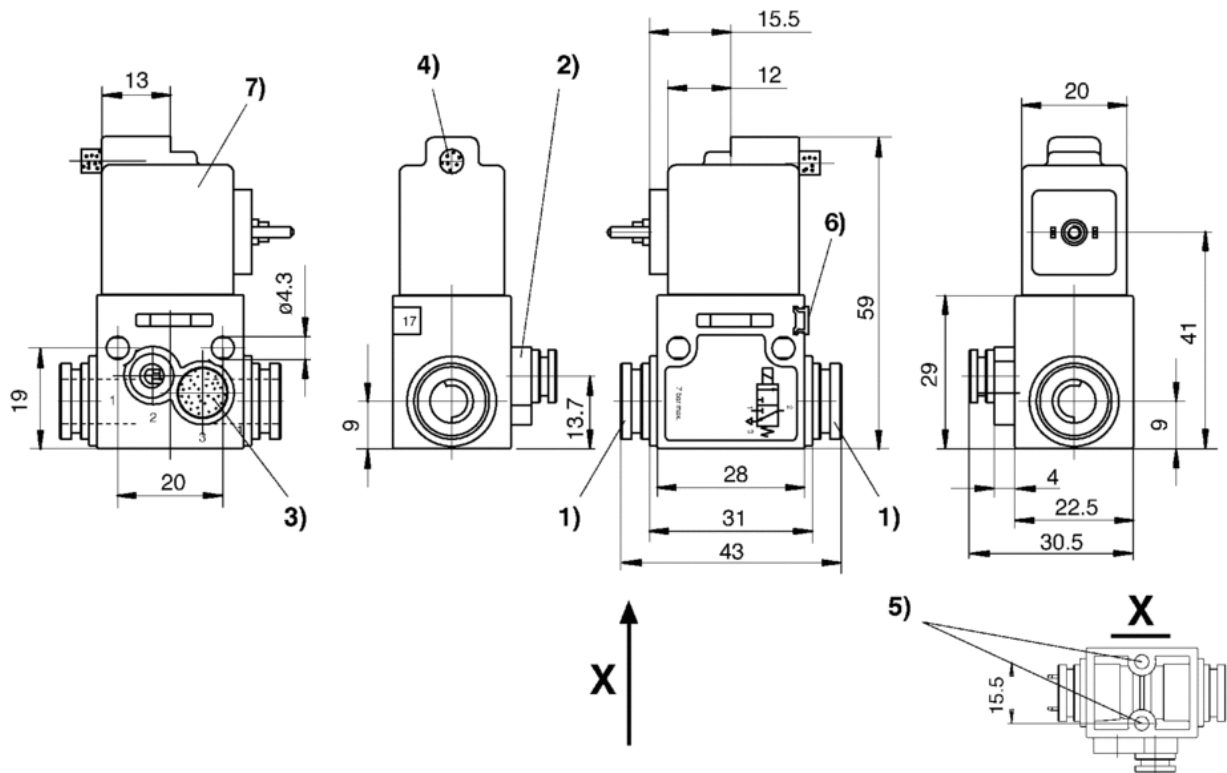
Use only the approved oils from AVENTICS. Further information can be found in the "Technical information" document (available in the MediaCentre).

## Technical information

| Material |                                |
|----------|--------------------------------|
| Housing  | Polyoxymethylene               |
| Seals    | Acrylonitrile butadiene rubber |

## Dimensions

### Dimensions



- 1) Port 1
- 2) Port 2
- 3) Exhaust
- 4) Exhaust
- 5) Pocket hole 6 mm deep for 3.5 self-tapping screw

- 6) Mounting space for name plate
- 7) Coil can be rotated at 180° intervals

# Efficient pneumatic solutions, our program: cylinders and drives, valves and valve systems, air supply management



Visit us: [Emerson.com/Aventics](https://www.emerson.com/Aventics)

Your local contact: [Emerson.com/contactus](https://www.emerson.com/contactus)



[Emerson.com](https://www.emerson.com)



[Facebook.com/EmersonAutomationSolutions](https://www.facebook.com/EmersonAutomationSolutions)



[LinkedIn.com/company/Emerson-Automation-Solutions](https://www.linkedin.com/company/Emerson-Automation-Solutions)



[Twitter.com/EMR\\_Automation](https://twitter.com/EMR_Automation)

An example configuration is depicted on the title page. The delivered product may thus vary from that in the illustration. Subject to change. This Document, as well as the data, specifications and other information set forth in it, are the exclusive property of AVENTICS GmbH. It may not be reproduced or given to third parties without its consent. Only use the AVENTICS products shown in industrial applications. Read the product documentation completely and carefully before using the product. Observe the applicable regulations and laws of the respective country. When integrating the product into applications, note the system manufacturer's specifications for safe use of the product. The data specified only serve to describe the product. No statements concerning a certain condition or suitability for a certain application can be derived from our information. The information given does not release the user from the obligation of own judgement and verification. It must be remembered that the products are subject to a natural process of wear and aging.

The Emerson logo is a trademark and service mark of Emerson Electric Co. Brand logotype are registered trademarks of one of the Emerson family of companies. All other marks are the property of their respective owners. © 2020 Emerson Electric Co. All rights reserved.  
2020-12



## CONSIDER IT SOLVED™