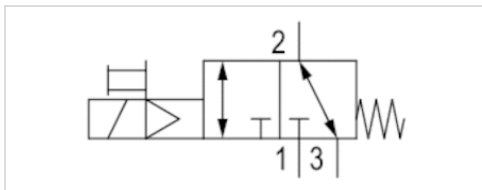


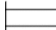
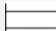

3/2-directional valve, Series CD12

- 3/2
- $Q_n = 4000 \text{ l/min}$
- Pilot valve width : 30 mm
- NC/NO
- Pipe connection
- Compressed air connection output : M22x1,5
- Electrical connection : Plug, EN 175301-803, form A, 3-pin
- -25 °C cold-resistant
- Manual override : without detent
- single solenoid
- With spring return
- Pilot : Internal



Type	Spool valve, positive overlapping
Activation	Electrically
Pilot	Internal
Sealing principle	Soft sealing
Working pressure min./max.	2 ... 16 bar
Control pressure min./max.	2 ... 16 bar
Ambient temperature min./max.	-25 ... 50 °C
Medium temperature min./max.	-25 ... 50 °C
Medium	Compressed air
Max. particle size	50 µm
Oil content of compressed air	0 ... 1 mg/m ³
Nominal flow Q_n	4000 l/min
Nominal flow 1 ► 2	4000 l/min
Nominal flow 2 ► 3	4000 l/min
Pilot control exhaust	with directional pilot air exhaust
Connector standard	EN 175301-803:2006
Protection class with connection	IP65
Reverse polarity protection	Protected against polarity reversal
Compatibility index	14
Duty cycle	100 %
Typ. switch-on time	34 ms
Typ. switch-off time	90 ms
Weight	0,85 kg

Technical data

Part No.	MO		Compressed air connection	
			Input	Output
5724500920		NC/NO	M22x1,5	M22x1,5
5724505970		NC/NO	M22x1,5	M22x1,5
5724505980		NC/NO	M22x1,5	M22x1,5

Part No.	Compressed air connection	
	Exhaust	Pilot Exhaust
5724500920	M22x1,5	M5
5724505970	M22x1,5	M5
5724505980	M22x1,5	M5

Part No.	Operational voltage	Operational voltage	Operational voltage
	DC	AC 50 Hz	AC 60 Hz
5724500920	24 V	-	-
5724505970	-	110 V	110 V
5724505980	-	230 V	230 V

Part No.	Voltage tolerance	Voltage tolerance	Voltage tolerance	Power consumption
	DC	AC 50 Hz	AC 60 Hz	DC
5724500920	-10% / +10%	-	-	6,7 W
5724505970	-	-20% / +10%	-10% / +20%	-
5724505980	-	-20% / +10%	-10% / +20%	-

Part No.	Holding power	Holding power	Switch-on power	Switch-on power
	AC 50 Hz	AC 60 Hz	AC 50 Hz	AC 60 Hz
5724500920	-	-	-	-
5724505970	10,5 VA	7,6 VA	14,5 VA	12 VA
5724505980	10,8 VA	7,8 VA	15,2 VA	12,7 VA

Nominal flow Q_n at 6 bar and Δp = 1 bar, MO = Manual override

Technical information

The min. control pressure must be adhered to, since otherwise faulty switching and valve failure may result!

The pressure dew point must be at least 15 °C under ambient and medium temperature and may not exceed 3 °C .

The oil content of compressed air must remain constant during the life cycle.

Use only the approved oils from AVENTICS. Further information can be found in the "Technical information" document (available in the MediaCentre).

ATEX optional: ATEX version can be produced by combining the basic valve without coil with an ATEX coil. ATEX ID: see ATEX coils catalog page.

option valve: The input and output compressed air connections can be exchanged.

The valve can thereby be used in the NC or NO operating mode.

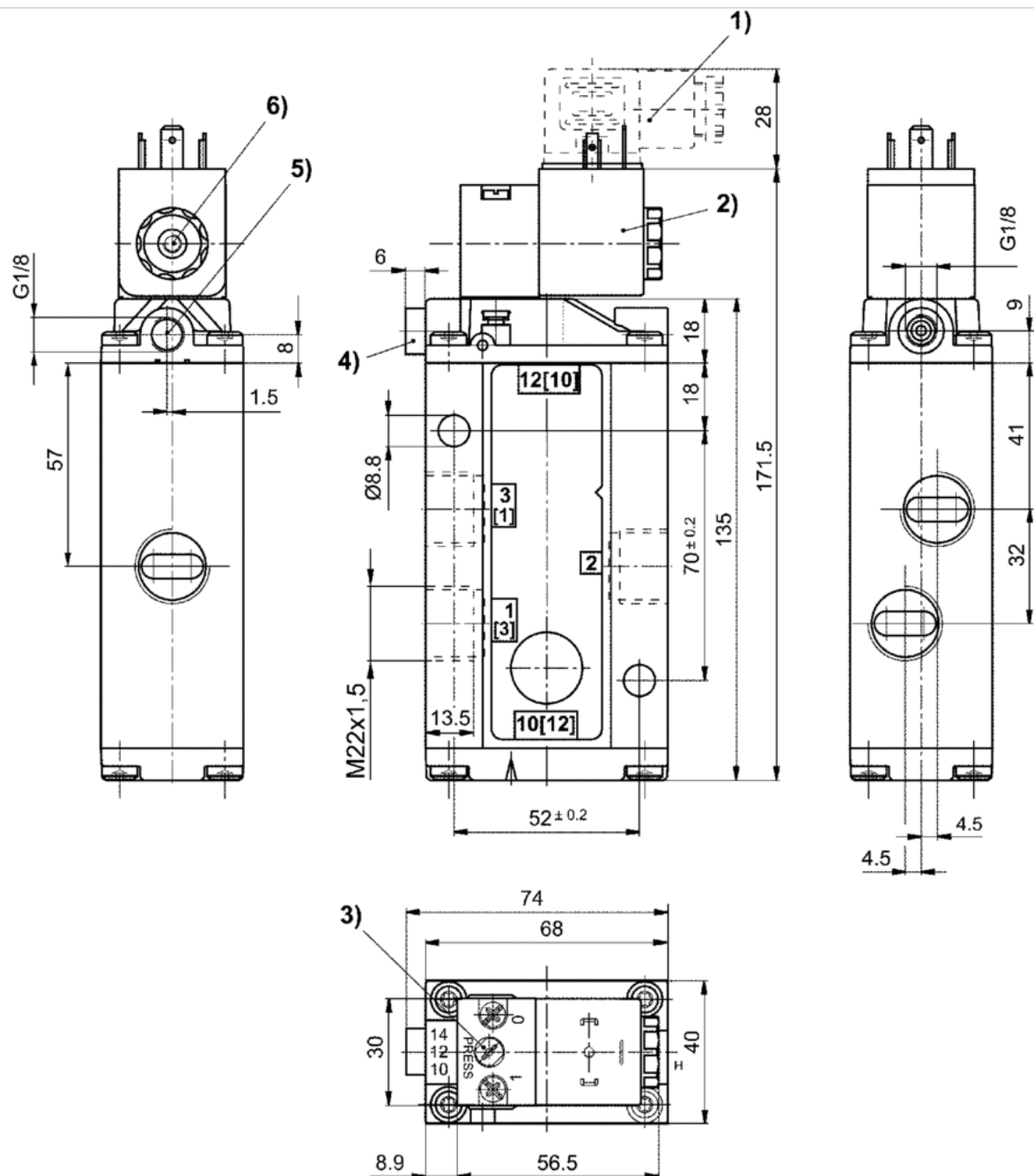
*Note: Basic valves feature a maximum working pressure of 16 bar. When combined with standard CNOMO pilots, the maximum working pressure is 10 bar.

Technical information

Material	
Housing	Aluminum Polyamide fiber-glass reinforced
Seals	Acrylonitrile butadiene rubber Polyurethane

Dimensions

Dimensions



1) Valve plug connector 2) Coil can be rotated at 90° intervals 3) Manual override 4) Port X (only for externally piloted valves) 5) Exhaust port of piston 6) Pilot valve exhaust, M5

Efficient pneumatic solutions, our program: cylinders and drives, valves and valve systems, air supply management



Visit us: [Emerson.com/Aventics](https://emerson.com/aventics)

Your local contact: [Emerson.com/contactus](https://emerson.com/contactus)



Emerson.com



Facebook.com/EmersonAutomationSolutions



LinkedIn.com/company/Emerson-Automation-Solutions



Twitter.com/EMR_Automation

An example configuration is depicted on the title page. The delivered product may thus vary from that in the illustration. Subject to change. This Document, as well as the data, specifications and other information set forth in it, are the exclusive property of AVENTICS GmbH. It may not be reproduced or given to third parties without its consent. Only use the AVENTICS products shown in industrial applications. Read the product documentation completely and carefully before using the product. Observe the applicable regulations and laws of the respective country. When integrating the product into applications, note the system manufacturer's specifications for safe use of the product. The data specified only serve to describe the product. No statements concerning a certain condition or suitability for a certain application can be derived from our information. The information given does not release the user from the obligation of own judgement and verification. It must be remembered that the products are subject to a natural process of wear and aging.

The Emerson logo is a trademark and service mark of Emerson Electric Co. Brand logotype are registered trademarks of one of the Emerson family of companies. All other marks are the property of their respective owners. © 2020 Emerson Electric Co. All rights reserved.
2020-12



CONSIDER IT SOLVED™