

# Rear eye MP6, Series CM1

- With ball joint and foot
- Suitable piston Ø 52,5 75 85, 95 115 mm



Weight
See table below

## Technical data

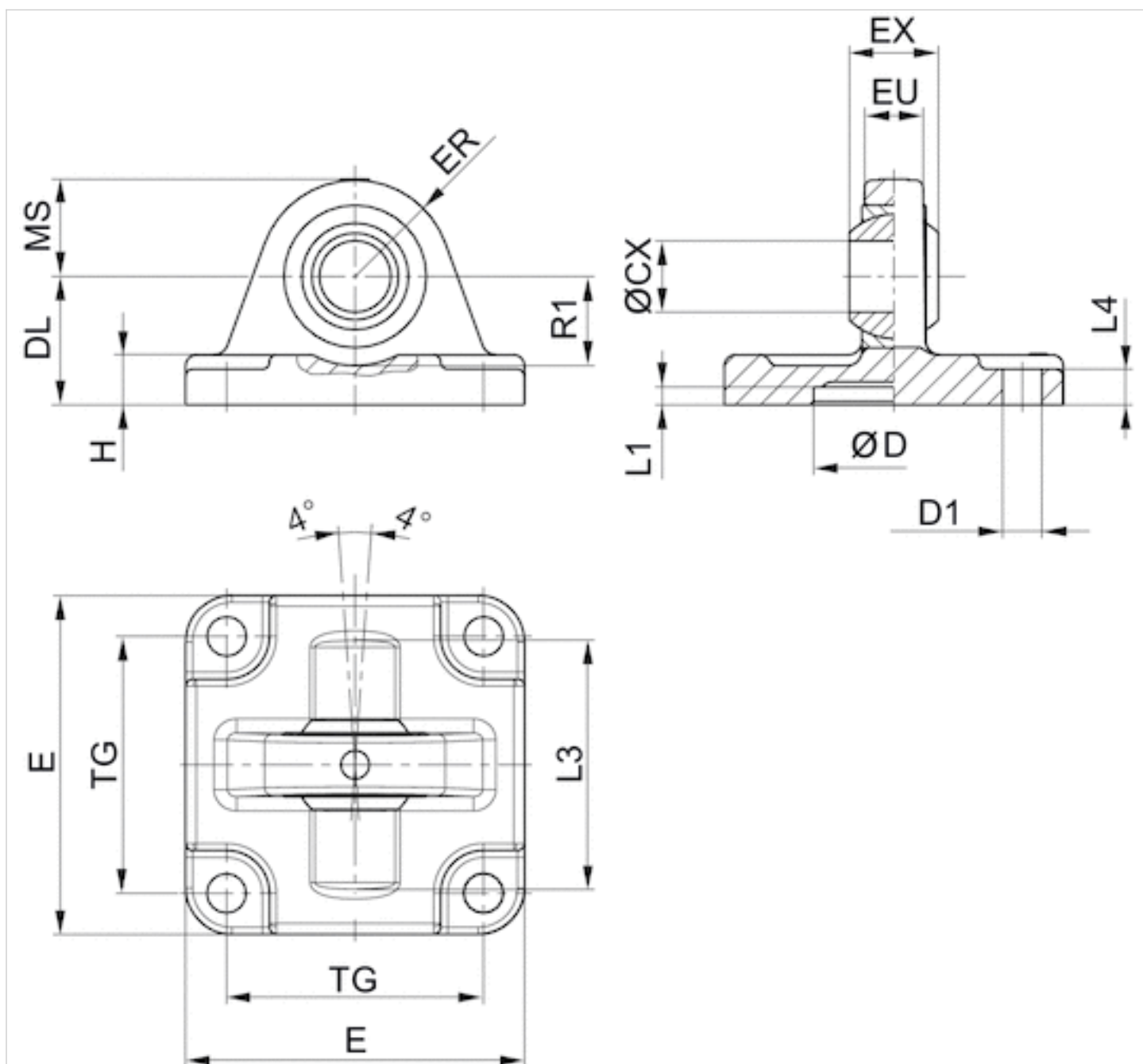
Part No.	Piston Ø	Swivel bearing Ø	Bearing material, inner ring	Bearing material, outer ring	Weight
5220163442	52,5 mm	10 mm	Stainless steel	Brass with PTFE coating	0,2 kg
5220363442	75 mm	12 mm	Stainless steel	Brass with PTFE coating	0,4 kg
5220463442	85, 95 mm	16 mm	Stainless steel	Brass with PTFE coating	0,6 kg
5220563442	115 mm	16 mm	Stainless steel	Brass with PTFE coating	1,1 kg

Scope of delivery: clevis incl. mounting screws

## Technical information

Material	
Material	Aluminum
Screws	galvanized steel

## Dimensions



## Dimensions

Part No.	Piston Ø	ØCX H7	ØD H11	ØD1 H13	DL ±0,2	E	EX -0,1	ER	EU	H	L1 min.	L3
5220163442	52,5 mm	10	-	7.5	29	45	14	15	10.5	8	-	-
5220363442	75 mm	12	-	10	26	65	16	18	12	10	-	-
5220463442	85, 95 mm	16	-	10	30	75	21	22	15	10	-	-
5220563442	115 mm	16	-	12	37.5	95	21	25	15	12	-	-

L4	MS -0,5	R1 min.	TG
-	-	-	33
-	-	-	49

L4	MS -0,5	R1 min.	TG
–	–	–	59
–	–	–	75

# Efficient pneumatic solutions, our program: cylinders and drives, valves and valve systems, air supply management



Visit us: [Emerson.com/Aventics](https://emerson.com/aventics)

Your local contact: [Emerson.com/contactus](https://emerson.com/contactus)



Emerson.com



Facebook.com/EmersonAutomationSolutions



LinkedIn.com/company/Emerson-Automation-Solutions



Twitter.com/EMR\_Automation

An example configuration is depicted on the title page. The delivered product may thus vary from that in the illustration. Subject to change. This Document, as well as the data, specifications and other information set forth in it, are the exclusive property of AVENTICS GmbH. It may not be reproduced or given to third parties without its consent. Only use the AVENTICS products shown in industrial applications. Read the product documentation completely and carefully before using the product. Observe the applicable regulations and laws of the respective country. When integrating the product into applications, note the system manufacturer's specifications for safe use of the product. The data specified only serve to describe the product. No statements concerning a certain condition or suitability for a certain application can be derived from our information. The information given does not release the user from the obligation of own judgement and verification. It must be remembered that the products are subject to a natural process of wear and aging.

The Emerson logo is a trademark and service mark of Emerson Electric Co. Brand logotype are registered trademarks of one of the Emerson family of companies. All other marks are the property of their respective owners. © 2020 Emerson Electric Co. All rights reserved.  
2020-12



## CONSIDER IT SOLVED™