

# Clevis mounting MP2, Series CM1

- for rear eye MP9 with rubber bushing
- Suitable piston Ø 25, 32, 40, 50, 63, 80, 100 mm
- for series 167, CCL-IS, CCL-IC



## Technical data

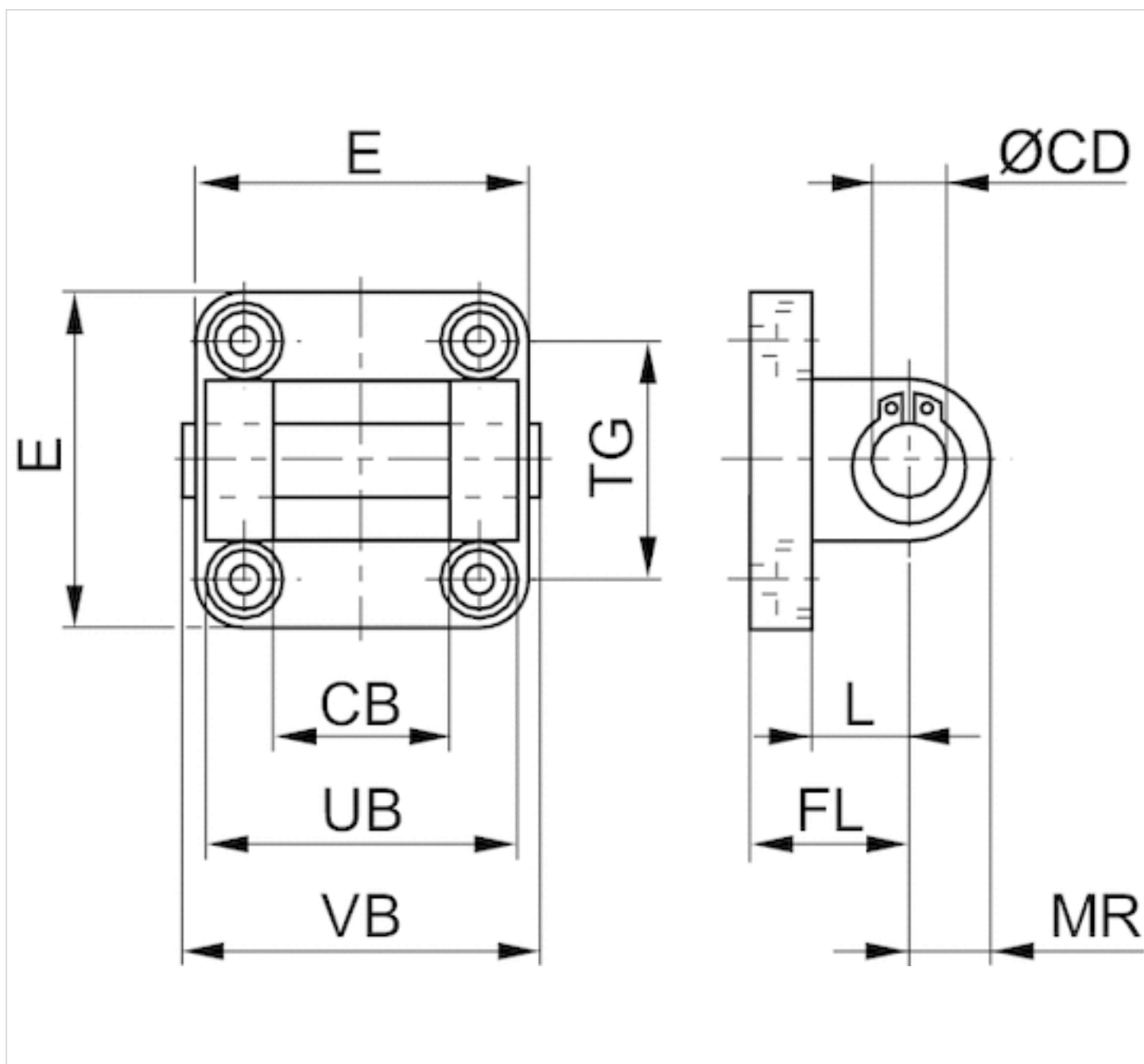
Part No.	Piston Ø	Swivel bearing Ø	Housing material
3682902590	25 mm	10 mm	Aluminum, anodized
3672903000	32 mm	10 mm	Aluminum (forged and anodized)
3672904000	40 mm	12 mm	Aluminum (forged and anodized)
3672905000	50 mm	12 mm	Aluminum (forged and anodized)
3672906000	63 mm	16 mm	Aluminum (forged and anodized)
3672908000	80 mm	16 mm	Aluminum (forged and anodized)
3672910000	100 mm	20 mm	Aluminum (forged and anodized)

Scope of delivery: clevis mounting incl. pivot pins and mounting screws

## Technical information

Material	
Material	Aluminum, anodized Aluminum (forged and anodized)
Screws	Stainless steel
Mounting bolts	Stainless steel

## Dimensions



## Dimensions

Part No.	CB H14	Ø CD H9	E max.	FL	L min.	MR	UB h14	VB	TG *contains elongated hole
3682902590	18	10	40	20	14	9	36	42,5	26/27*
3672903000	26	10	47,5	22	12	11	45	64	32
3672904000	28	12	53,5	25	15	13	52	71	40*
3672905000	32	12	64	27	15	13	60	79	46
3672906000	40	16	74	32	18	17	70	93	59*
3672908000	50	16	95	36	20	17	90	113	73
3672910000	60	20	113,5	41	25	21	110	133	90*

# Efficient pneumatic solutions, our program: cylinders and drives, valves and valve systems, air supply management



Visit us: [Emerson.com/Aventics](https://emerson.com/aventics)

Your local contact: [Emerson.com/contactus](https://emerson.com/contactus)



Emerson.com



Facebook.com/EmersonAutomationSolutions



LinkedIn.com/company/Emerson-Automation-Solutions



Twitter.com/EMR\_Automation

An example configuration is depicted on the title page. The delivered product may thus vary from that in the illustration. Subject to change. This Document, as well as the data, specifications and other information set forth in it, are the exclusive property of AVENTICS GmbH. It may not be reproduced or given to third parties without its consent. Only use the AVENTICS products shown in industrial applications. Read the product documentation completely and carefully before using the product. Observe the applicable regulations and laws of the respective country. When integrating the product into applications, note the system manufacturer's specifications for safe use of the product. The data specified only serve to describe the product. No statements concerning a certain condition or suitability for a certain application can be derived from our information. The information given does not release the user from the obligation of own judgement and verification. It must be remembered that the products are subject to a natural process of wear and aging.

The Emerson logo is a trademark and service mark of Emerson Electric Co. Brand logotype are registered trademarks of one of the Emerson family of companies. All other marks are the property of their respective owners. © 2020 Emerson Electric Co. All rights reserved.  
2021-10



## CONSIDER IT SOLVED™