

Rear eye MP6, Series CM1

- With ball joint and foot
- Cylinder mounting in accordance with ISO 21287 ISO 6431
- Suitable piston Ø 25 32 40 50 63 80 100 mm



Standards
Weight

See table below
See table below

Technical data

Part No.	Piston Ø	Swivel bearing Ø	Standardization	Housing material	Screws material
3663602000	25 mm	10 mm	ISO 21287	Aluminum, anodized	Stainless steel
3663603000	32 mm	10 mm	ISO 6431	Aluminum	galvanized steel
3663604000	40 mm	12 mm	ISO 6431	Aluminum	galvanized steel
3663605000	50 mm	12 mm	ISO 6431	Aluminum	galvanized steel
3663606000	63 mm	16 mm	ISO 6431	Aluminum	galvanized steel
3663608000	80 mm	16 mm	ISO 6431	Aluminum	galvanized steel
3663610000	100 mm	20 mm	ISO 6431	Aluminum	galvanized steel

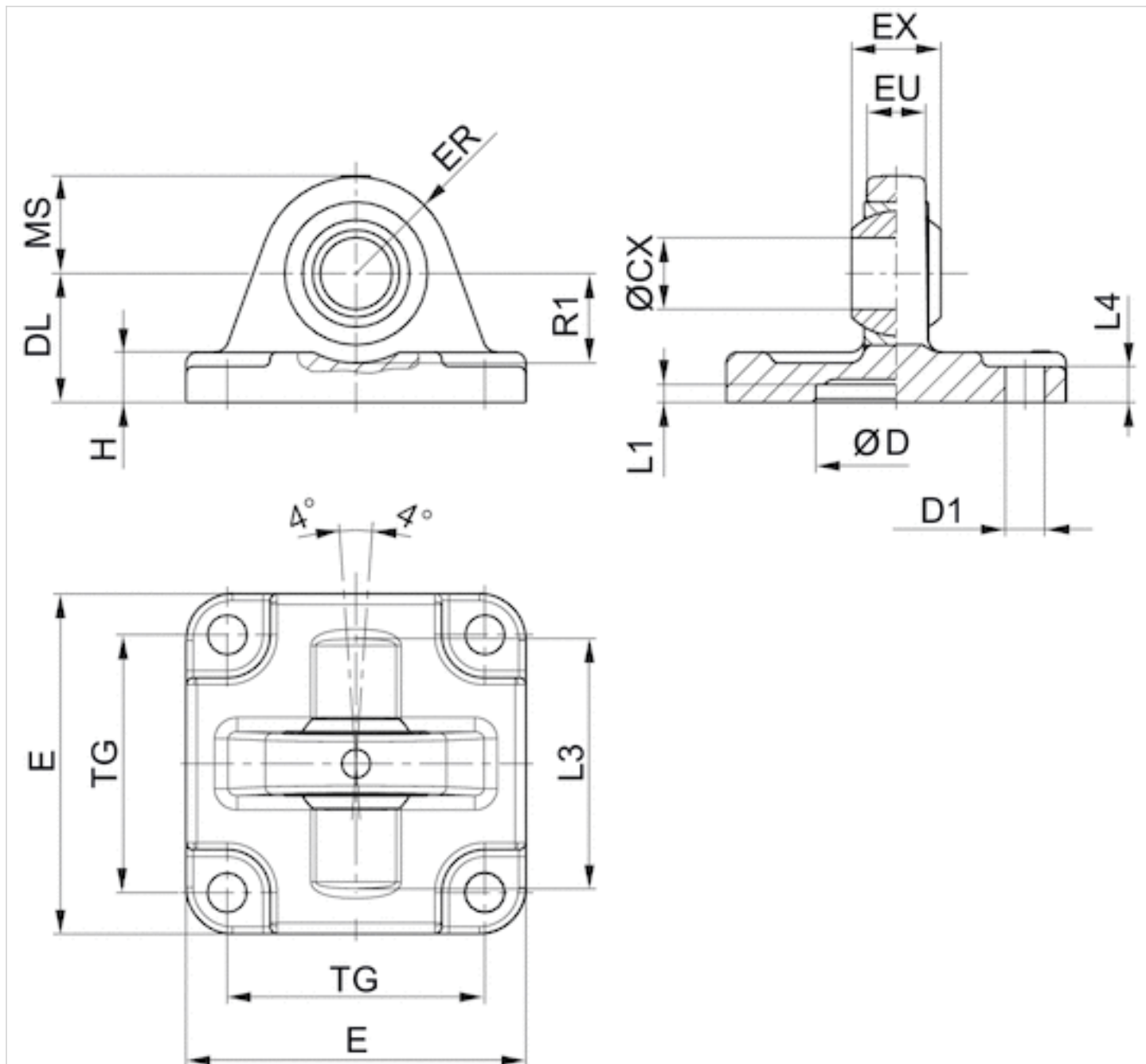
Part No.	Bearing material, inner ring	Bearing material, outer ring	Weight
3663602000	Stainless steel	Stainless steel with PTFE coating	0,1 kg
3663603000	Stainless steel	Brass with PTFE coating	0,1 kg
3663604000	Stainless steel	Brass with PTFE coating	0,1 kg
3663605000	Stainless steel	Brass with PTFE coating	0,2 kg
3663606000	Stainless steel	Brass with PTFE coating	0,3 kg
3663608000	Stainless steel	Brass with PTFE coating	0,5 kg
3663610000	Stainless steel	Brass with PTFE coating	0,8 kg

Scope of delivery: clevis incl. mounting screws

Technical information

Material	
Material	Aluminum, anodized Aluminum
Screws	Stainless steel galvanized steel
Bearing	Stainless steel

Dimensions



Dimensions

Part No.	Piston Ø	ØCX H7	ØD H11	ØD1 H13	DL ±0,2	E	EX -0,1	ER	EU	H	L1 min.	L3
3663602000	25 mm	10	18	5,5	20	40	9	14	8	6	3	–
3663603000	32 mm	10	20	5,5	22	46	9	15	8	6	0,5	42
3663604000	40 mm	12	30	6,6	28	55	12	17	9,5	8	0,5	48
3663605000	50 mm	12	40	6,6	28	62	12	17	9,5	9	0,5	55
3663606000	63 mm	16	55	9	36	80	16	25	12,5	11	0,5	70
3663608000	80 mm	16	70	9	38	94	16	28	12,5	12	0,5	80
3663610000	100 mm	20	90	11	43	114	20	35	16	15	0,5	100

L4	MS -0,5	R1 min.	TG
3	14	–	26
6	15	16	32
8	17	16	32
9	17	18	46
11	25	21	59
12	28	21	73
15	35	28	90

Efficient pneumatic solutions, our program: cylinders and drives, valves and valve systems, air supply management



Visit us: [Emerson.com/Aventics](https://www.emerson.com/Aventics)

Your local contact: [Emerson.com/contactus](https://www.emerson.com/contactus)



Emerson.com



Facebook.com/EmersonAutomationSolutions



LinkedIn.com/company/Emerson-Automation-Solutions



Twitter.com/EMR_Automation

An example configuration is depicted on the title page. The delivered product may thus vary from that in the illustration. Subject to change. This Document, as well as the data, specifications and other information set forth in it, are the exclusive property of AVENTICS GmbH. It may not be reproduced or given to third parties without its consent. Only use the AVENTICS products shown in industrial applications. Read the product documentation completely and carefully before using the product. Observe the applicable regulations and laws of the respective country. When integrating the product into applications, note the system manufacturer's specifications for safe use of the product. The data specified only serve to describe the product. No statements concerning a certain condition or suitability for a certain application can be derived from our information. The information given does not release the user from the obligation of own judgement and verification. It must be remembered that the products are subject to a natural process of wear and aging.

The Emerson logo is a trademark and service mark of Emerson Electric Co. Brand logotype are registered trademarks of one of the Emerson family of companies. All other marks are the property of their respective owners. © 2020 Emerson Electric Co. All rights reserved.
2020-12



CONSIDER IT SOLVED™