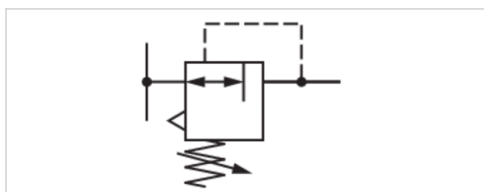


Fine setting valve

- Qn = 900 l/min
- Actuating element Push button
- Internal thread
- Poppet valve



Type	Poppet valve
Working pressure min./max.	See table below
Adjustment range min./max.	See table below
Ambient temperature min./max.	-25 ... 70 °C
Medium temperature min./max.	-25 ... 70 °C
Medium	Compressed air
Nominal flow Qn	900 l/min
Hysteresis	0.15 bar
control stroke	7.5 mm
Weight	0.5 kg



Technical data

Part No.	Compressed air connection Input	Compressed air connection type Input	Compressed air connection Output
3610507100	G 1/4	Internal thread	G 1/4
3610507200	G 1/4	Internal thread	G 1/4
3610507300	G 1/4	Internal thread	G 1/4
3610507500	G 1/4	Internal thread	G 1/4
3610507600	G 1/4	Internal thread	G 1/4
3610507700	G 1/4	Internal thread	G 1/4

Part No.	Working pressure min./max.	Adjustment range min./max.	actuating force min.
3610507100	0.1 ... 10 bar	0.1 ... 2.6 bar	110 N
3610507200	0.1 ... 10 bar	0.1 ... 3.6 bar	140 N
3610507300	0.1 ... 10 bar	0.1 ... 4.1 bar	160 N
3610507500	0.1 ... 10 bar	0.1 ... 5.1 bar	190 N
3610507600	0.1 ... 10 bar	0.1 ... 7.1 bar	250 N
3610507700	0.1 ... 12 bar	0.1 ... 10.1 bar	350 N

Part No.	Parallel pressure displacement
3610507100	1.4 bar
3610507200	1.4 bar
3610507300	1.4 bar

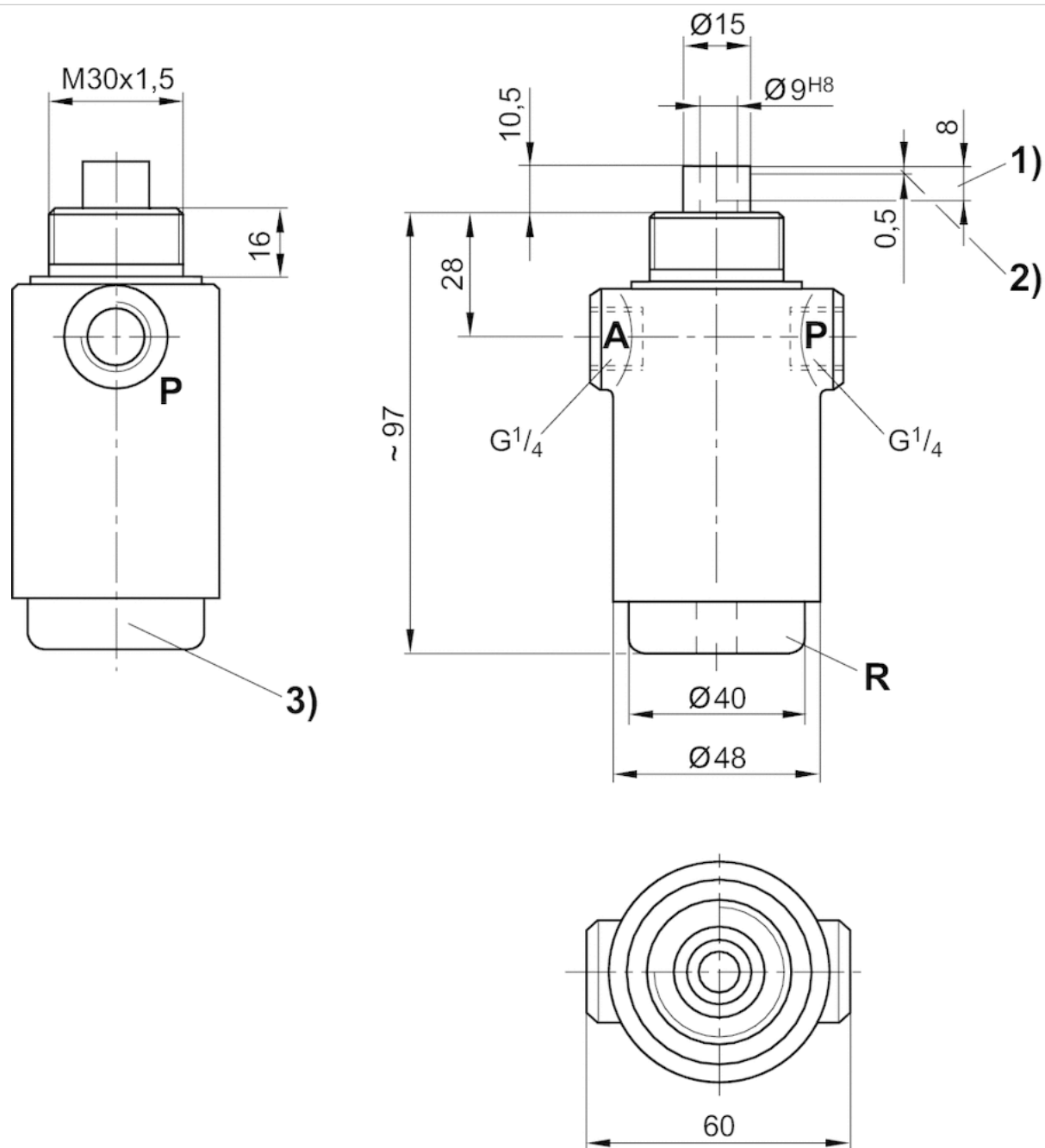
Part No.	Parallel pressure displacement
3610507500	1.4 bar
3610507600	0.8 bar
3610507700	-

Technical information

Material	
Housing	Die cast zinc
Seals	Acrylonitrile butadiene rubber

Dimensions

Dimensions



1) Stroke 2) Closing or exhaust stroke 3) Screw cap

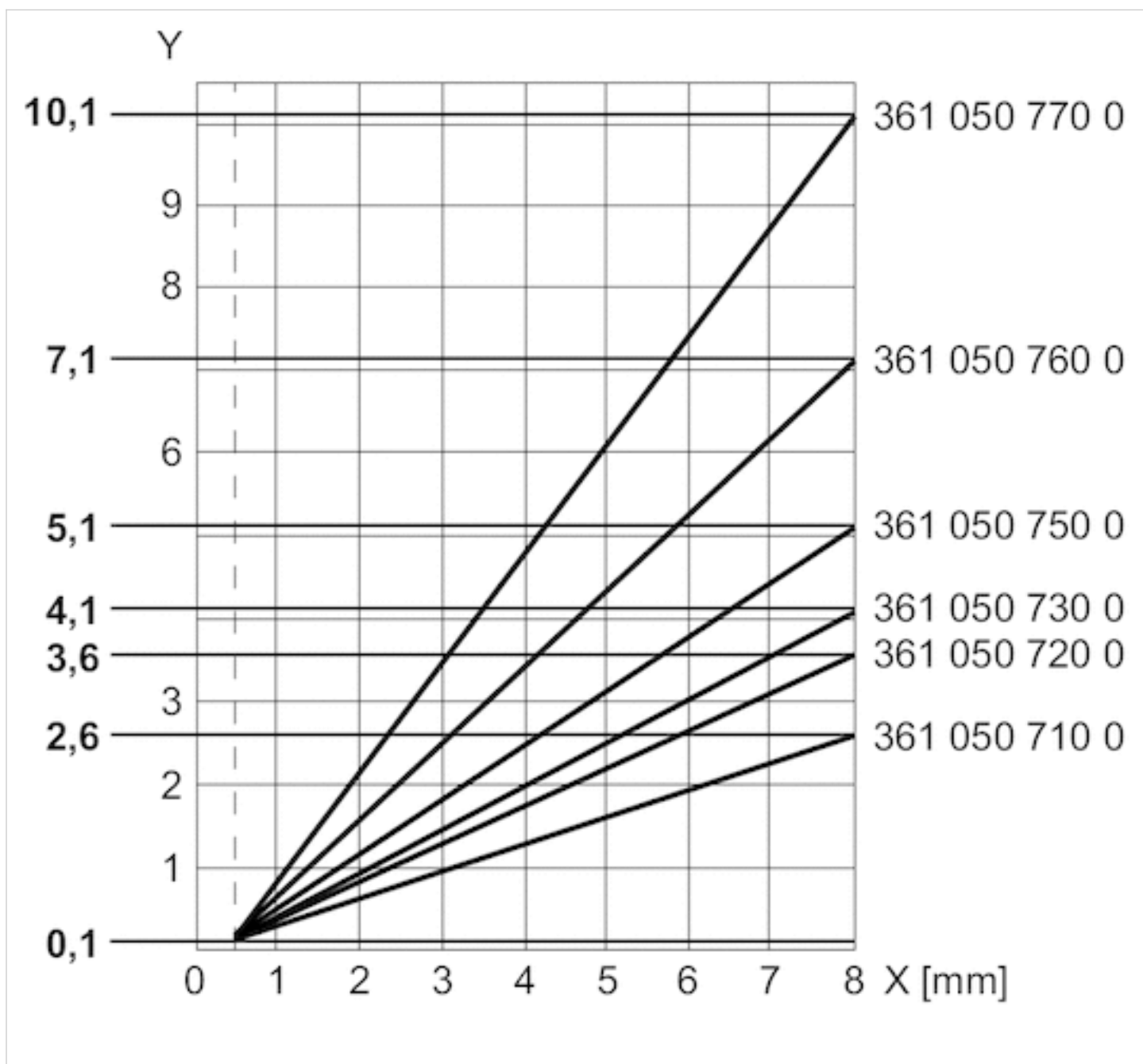
A = connection output

P = connection input

R = Port exhaust

Diagrams

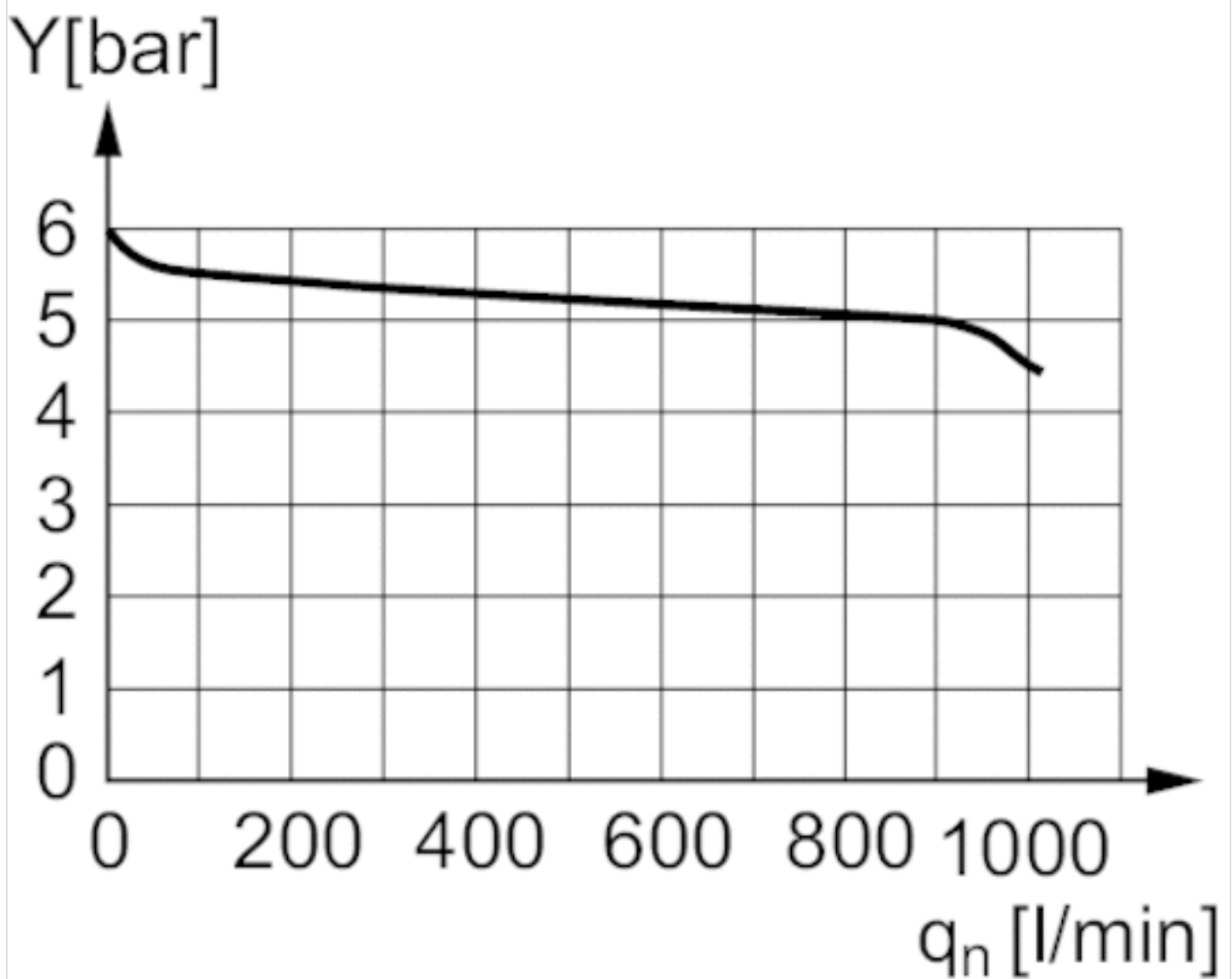
Pressure characteristics curve



x = stroke

The characteristic curve can be moved parallel to the illustrated characteristic curve (in the y direction) using the screw cap.

Flow rate characteristic



input pressure: 8 bar, supply pressure: 6 bar

y: pressure in line "A" [bar]

Efficient pneumatic solutions, our program: cylinders and drives, valves and valve systems, air supply management



Visit us: [Emerson.com/Aventics](https://www.emerson.com/Aventics)

Your local contact: [Emerson.com/contactus](https://www.emerson.com/contactus)



Emerson.com



Facebook.com/EmersonAutomationSolutions



LinkedIn.com/company/Emerson-Automation-Solutions



Twitter.com/EMR_Automation

An example configuration is depicted on the title page. The delivered product may thus vary from that in the illustration. Subject to change. This Document, as well as the data, specifications and other information set forth in it, are the exclusive property of AVENTICS GmbH. It may not be reproduced or given to third parties without its consent. Only use the AVENTICS products shown in industrial applications. Read the product documentation completely and carefully before using the product. Observe the applicable regulations and laws of the respective country. When integrating the product into applications, note the system manufacturer's specifications for safe use of the product. The data specified only serve to describe the product. No statements concerning a certain condition or suitability for a certain application can be derived from our information. The information given does not release the user from the obligation of own judgement and verification. It must be remembered that the products are subject to a natural process of wear and aging.

The Emerson logo is a trademark and service mark of Emerson Electric Co. Brand logotype are registered trademarks of one of the Emerson family of companies. All other marks are the property of their respective owners. © 2020 Emerson Electric Co. All rights reserved.
2020-12



CONSIDER IT SOLVED™