

# Series AR1

- G 1/2 G 1 G 2

- 1 3,2 5 10 20 40 90 L



Working pressure min./max.	See table below
Ambient temperature min./max.	-40 ... 100 °C
Medium temperature min./max.	-40 ... 100 °C
Medium	Compressed air
Air reservoir volume	See table below

## Technical data

Part No.	Port 1	Port 2	Working pressure min./max.	Air reservoir volume	Reservoir Ø	Fig.
3513000000	G 1/2	-	0 ... 11 bar	1 L	105 mm	Fig. 1
3513000010	G 1	G 1/2	0 ... 11 bar	3,2 L	101,6 mm	Fig. 2
3513000020	G 1	G 1/2	0 ... 10 bar	5 L	154 mm	Fig. 3
3513000030	G 1	G 1/2	0 ... 11 bar	10 L	206 mm	Fig. 4
3513000040	G 1	G 1/2	0 ... 10 bar	20 L	246 mm	Fig. 5
3513000050	G 1	G 1/2	0 ... 11 bar	40 L	276 mm	Fig. 6
3513000060	G 2	G 1/2	0 ... 11 bar	90 L	350 mm	Fig. 7

Reservoirs with a diameter up to 206 mm are fixed with tensioning straps., You can find mounting kits for larger diameters without feet in the accessories.

## Technical information

The pressure dew point must be at least 15 °C under ambient and medium temperature and may not exceed 3 °C .

The oil content of compressed air must remain constant during the life cycle.

Use only the approved oils from AVENTICS. Further information can be found in the “Technical information” document (available in the MediaCentre).

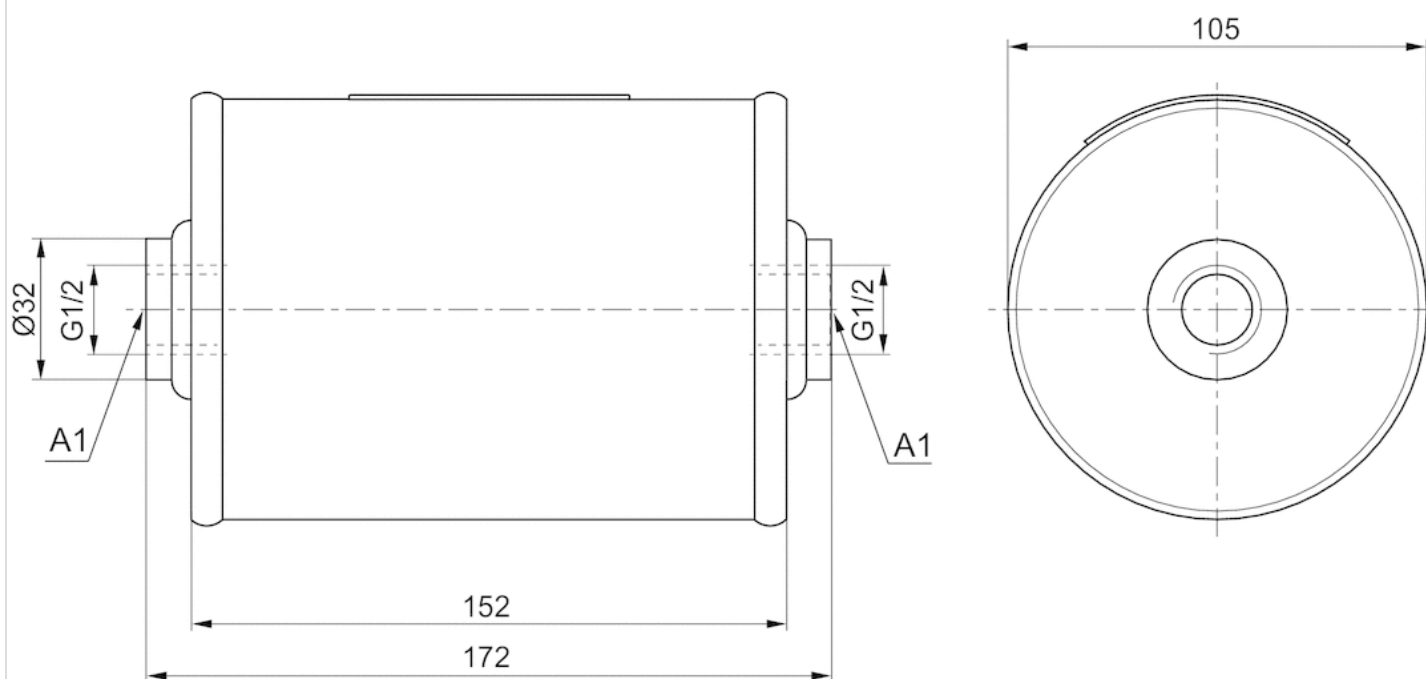
## Technical information

### Material

Housing	Steel, black painted
---------	----------------------

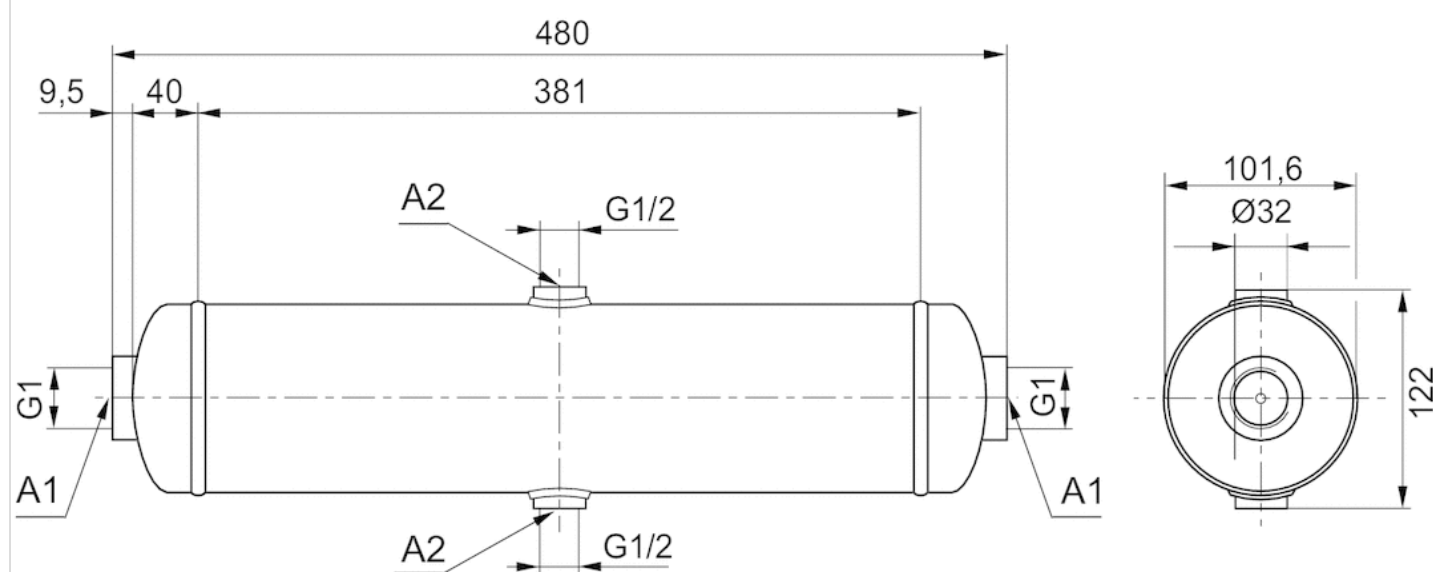
## Dimensions

### Dimensions, Fig. 1



A1 = horizontal connection

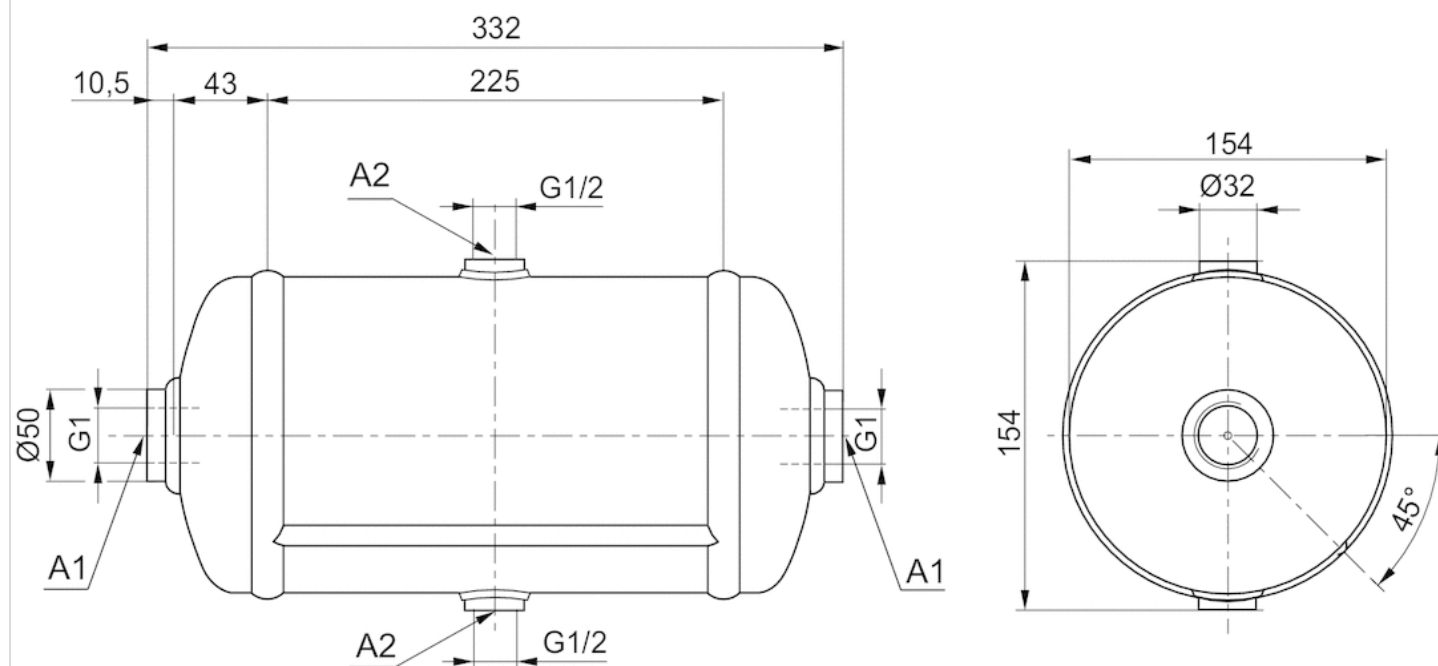
Dimensions, Fig. 2



A1 = horizontal connection

A2 = radial connection

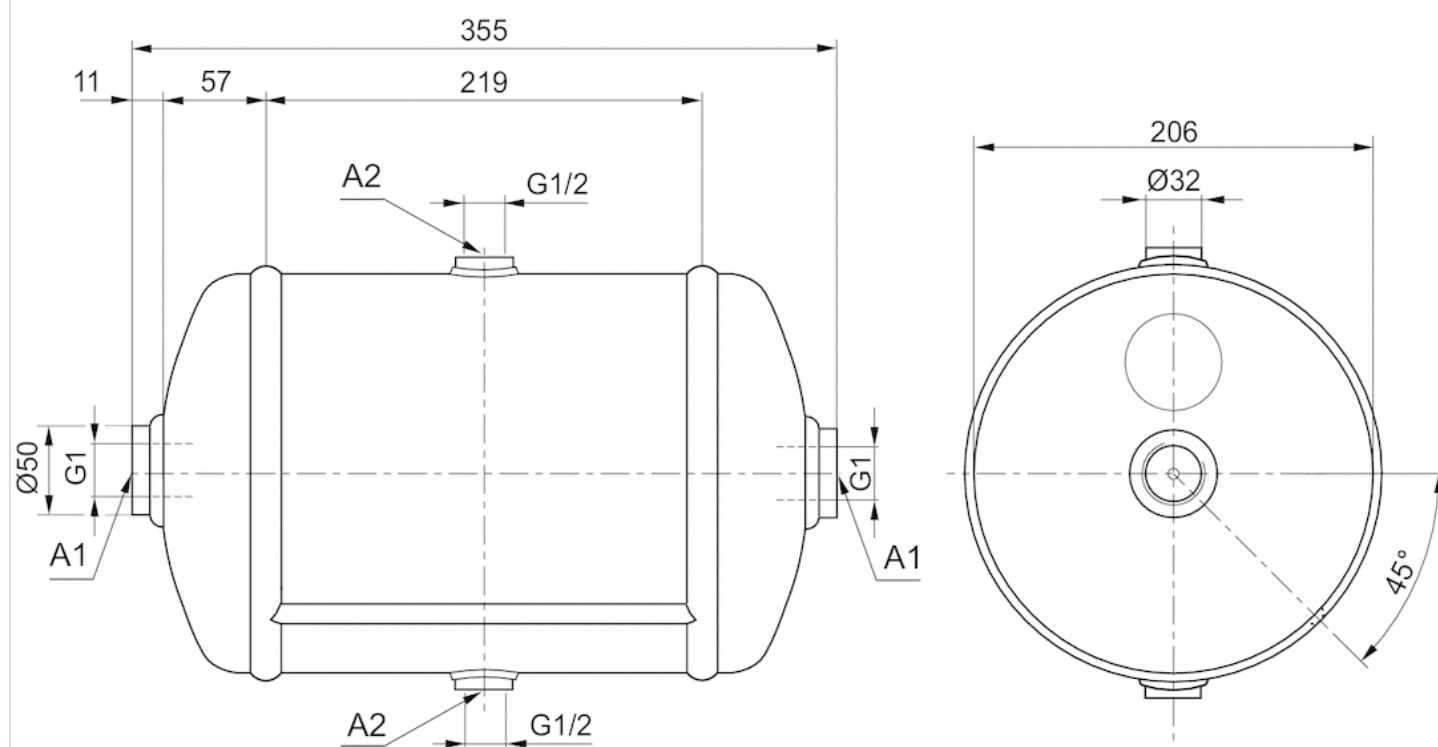
Dimensions, Fig. 3



A1 = horizontal connection

A2 = radial connection

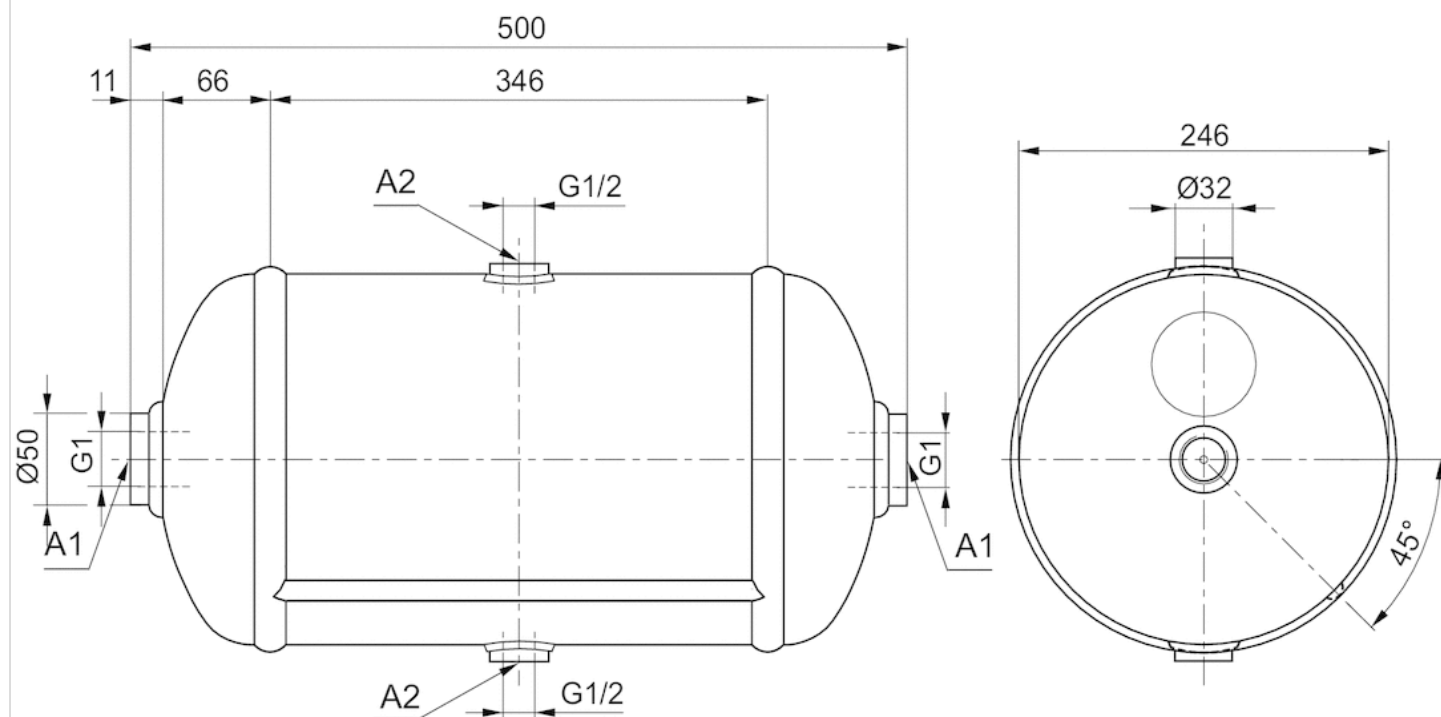
Dimensions, Fig. 4



A1 = horizontal connection

A2 = radial connection

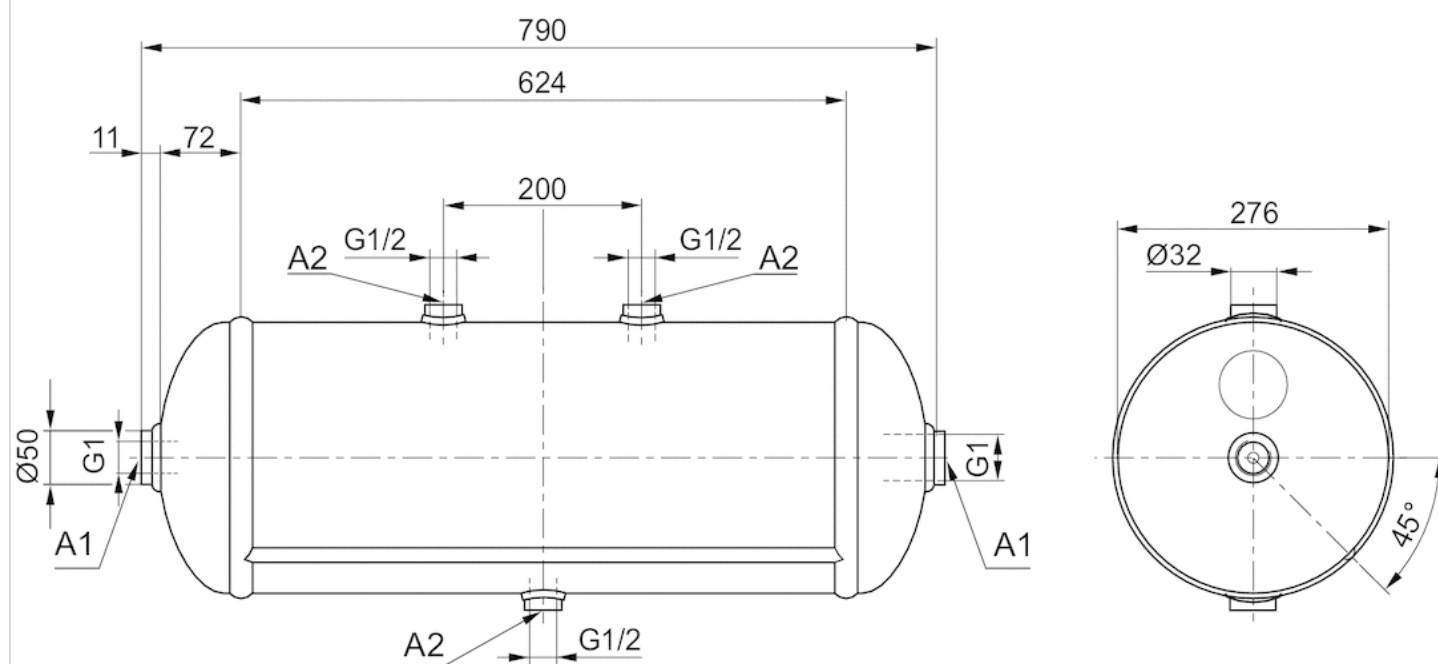
Dimensions, Fig. 5



A1 = horizontal connection

A2 = radial connection

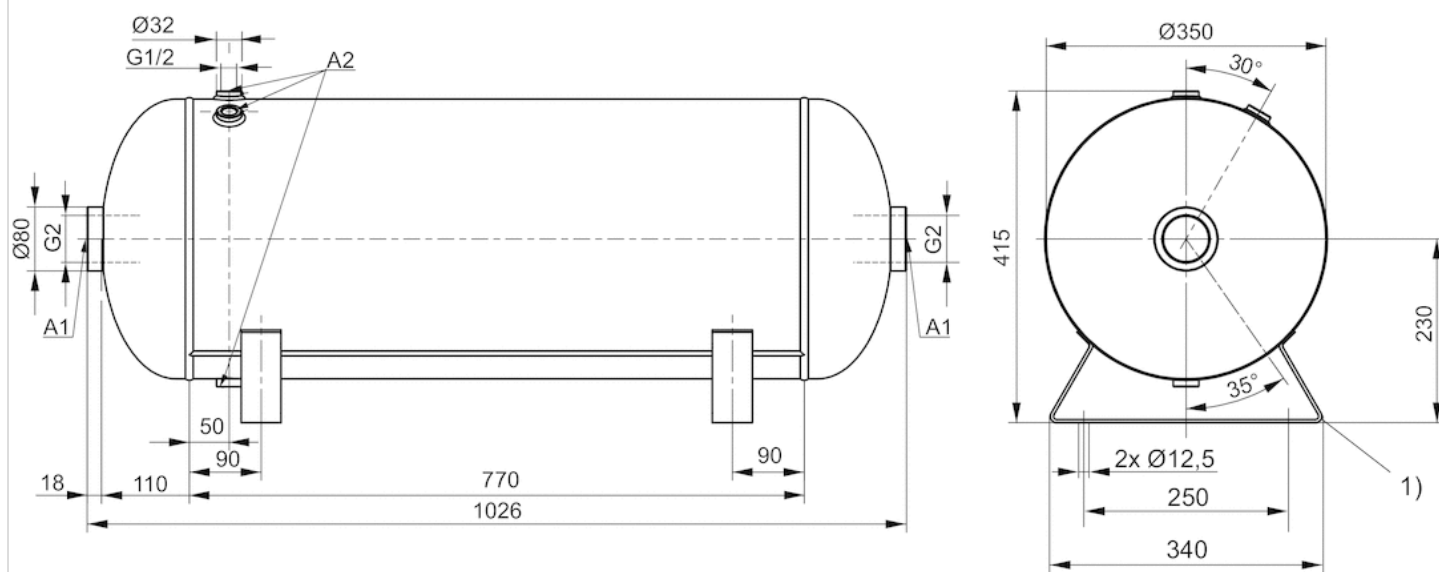
Dimensions, Fig. 6



A1 = horizontal connection

A2 = radial connection

## Dimensions, Fig. 7



A1 = horizontal connection

A2 = radial connection

1) Foot



# Efficient pneumatic solutions, our program: cylinders and drives, valves and valve systems, air supply management



Visit us: [Emerson.com/Aventics](https://emerson.com/aventics)

Your local contact: [Emerson.com/contactus](https://emerson.com/contactus)



Emerson.com



Facebook.com/EmersonAutomationSolutions



LinkedIn.com/company/Emerson-Automation-Solutions



Twitter.com/EMR\_Automation

An example configuration is depicted on the title page. The delivered product may thus vary from that in the illustration. Subject to change. This Document, as well as the data, specifications and other information set forth in it, are the exclusive property of AVENTICS GmbH. It may not be reproduced or given to third parties without its consent. Only use the AVENTICS products shown in industrial applications. Read the product documentation completely and carefully before using the product. Observe the applicable regulations and laws of the respective country. When integrating the product into applications, note the system manufacturer's specifications for safe use of the product. The data specified only serve to describe the product. No statements concerning a certain condition or suitability for a certain application can be derived from our information. The information given does not release the user from the obligation of own judgement and verification. It must be remembered that the products are subject to a natural process of wear and aging.

The Emerson logo is a trademark and service mark of Emerson Electric Co. Brand logotype are registered trademarks of one of the Emerson family of companies. All other marks are the property of their respective owners. © 2020 Emerson Electric Co. All rights reserved.  
2020-12



## CONSIDER IT SOLVED™