

# P-manifold

- for CD07

- 5/2 and 5/3-directional valves



Compressed air connection	according to ISO 228-1
Working pressure min./max.	-0,95 ... 16 bar
Ambient temperature min./max.	-25 ... 80 °C
Medium temperature min./max.	-25 ... 80 °C
Medium	Compressed air
Exhaust (3,5)	uncollected exhaust
Weight	See table below

## Technical data

Part No.	Compressed air connection Input [1]	Number of valve positions	Weight
3337120222	Ø 10x1	2	0,277 kg
3337120232	Ø 10x1	3	0,338 kg
3337120242	Ø 10x1	4	0,401 kg
3337120252	Ø 10x1	5	0,462 kg
3337120262	Ø 10x1	6	0,52 kg
3337120272	Ø 10x1	7	0,595 kg
3337120282	Ø 10x1	8	0,64 kg
3337120292	Ø 10x1	9	0,705 kg
3337120302	Ø 10x1	10	0,773 kg
3337120312	Ø 10x1	11	0,82 kg
3337120322	Ø 10x1	12	0,914 kg

## Technical information

The min. control pressure must be adhered to, since otherwise faulty switching and valve failure may result!

The pressure dew point must be at least 15 °C under ambient and medium temperature and may not exceed 3 °C .

The oil content of compressed air must remain constant during the life cycle.

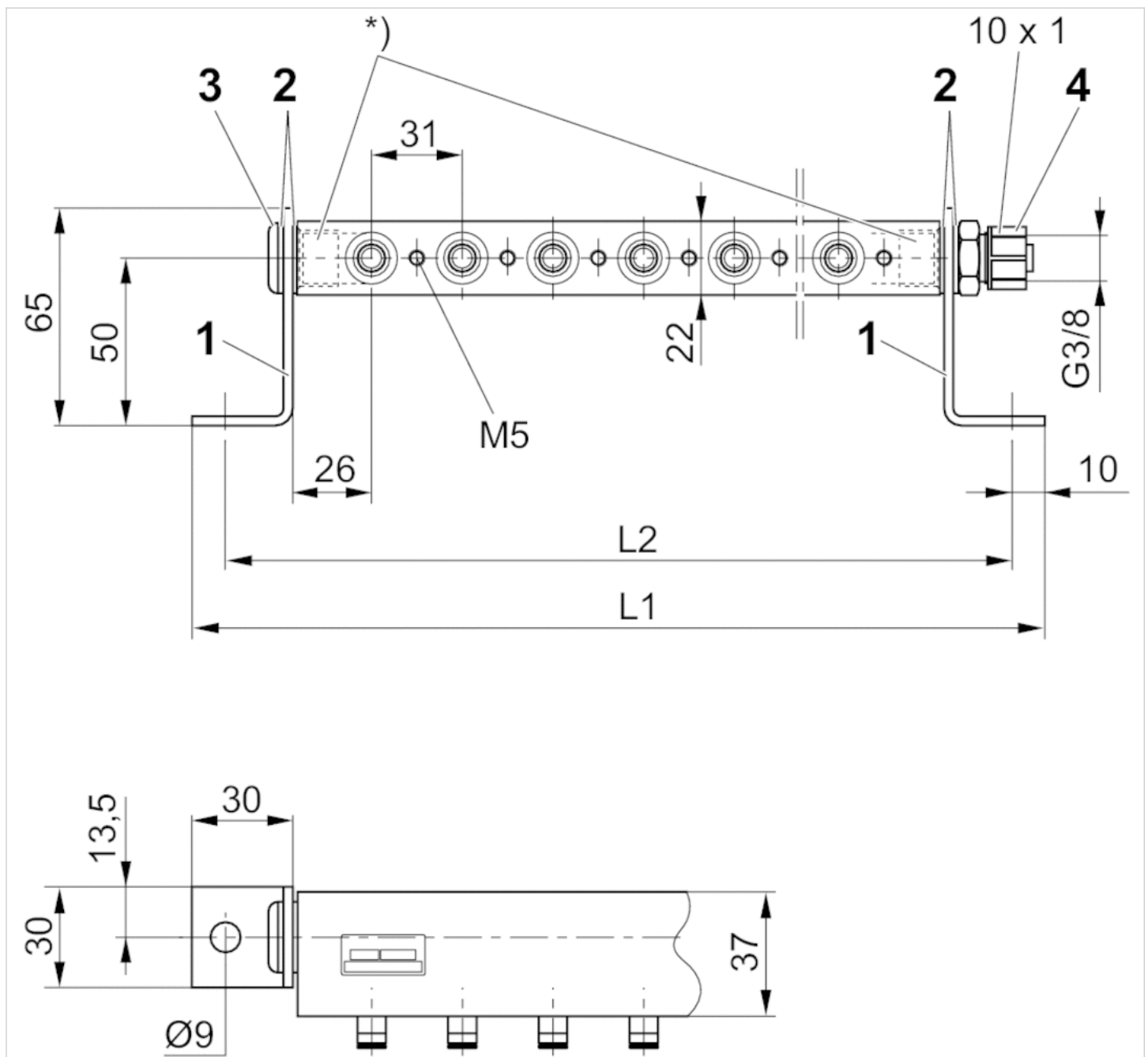
Use only the approved oils from AVENTICS. Further information can be found in the "Technical information" document (available in the MediaCentre).

## Technical information

Material	
Base plate	Aluminum Polyoxymethylene
Seal	Acrylonitrile butadiene rubber
Mounting bracket	Steel

## Dimensions

## Dimensions



Angled bracket (1), seal DIN 7603 Al (2), blanking screw G 3/8 ISO 228/1 (3), push-in fittings G 3/8 ISO 228/1, diameter 10x1 (4)

\* Only use fittings with max. length of thread engagement equal to 12 mm.

Valve mounting screws (depending on the valve used): washer, screw, O-ring must be ordered separately.

## Dimensions

Part No.	L1	L2
3337120222	152	132
3337120232	183	163
3337120242	214	194
3337120252	245	225

Part No.	L1	L2
3337120262	276	256
3337120272	307	287
3337120282	338	318
3337120292	369	349
3337120302	400	380
3337120312	431	411
3337120322	462	442

# Efficient pneumatic solutions, our program: cylinders and drives, valves and valve systems, air supply management



Visit us: [Emerson.com/Aventics](https://www.emerson.com/Aventics)

Your local contact: [Emerson.com/contactus](https://www.emerson.com/contactus)



Emerson.com



Facebook.com/EmersonAutomationSolutions



LinkedIn.com/company/Emerson-Automation-Solutions



Twitter.com/EMR\_Automation

An example configuration is depicted on the title page. The delivered product may thus vary from that in the illustration. Subject to change. This Document, as well as the data, specifications and other information set forth in it, are the exclusive property of AVENTICS GmbH. It may not be reproduced or given to third parties without its consent. Only use the AVENTICS products shown in industrial applications. Read the product documentation completely and carefully before using the product. Observe the applicable regulations and laws of the respective country. When integrating the product into applications, note the system manufacturer's specifications for safe use of the product. The data specified only serve to describe the product. No statements concerning a certain condition or suitability for a certain application can be derived from our information. The information given does not release the user from the obligation of own judgement and verification. It must be remembered that the products are subject to a natural process of wear and aging.

The Emerson logo is a trademark and service mark of Emerson Electric Co. Brand logotype are registered trademarks of one of the Emerson family of companies. All other marks are the property of their respective owners. © 2020 Emerson Electric Co. All rights reserved.  
2020-12



## CONSIDER IT SOLVED™