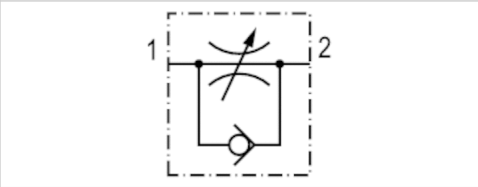


Check-choke valve, Series 344

- acid-proof
- Qn 2►1 = 280-16000 l/min



Working pressure min./max.	0 ... 16 bar
Ambient temperature min./max.	-20 ... 120 °C
Medium temperature min./max.	-20 ... 120 °C
Medium	Compressed air Oil
Weight	See table below

Technical data

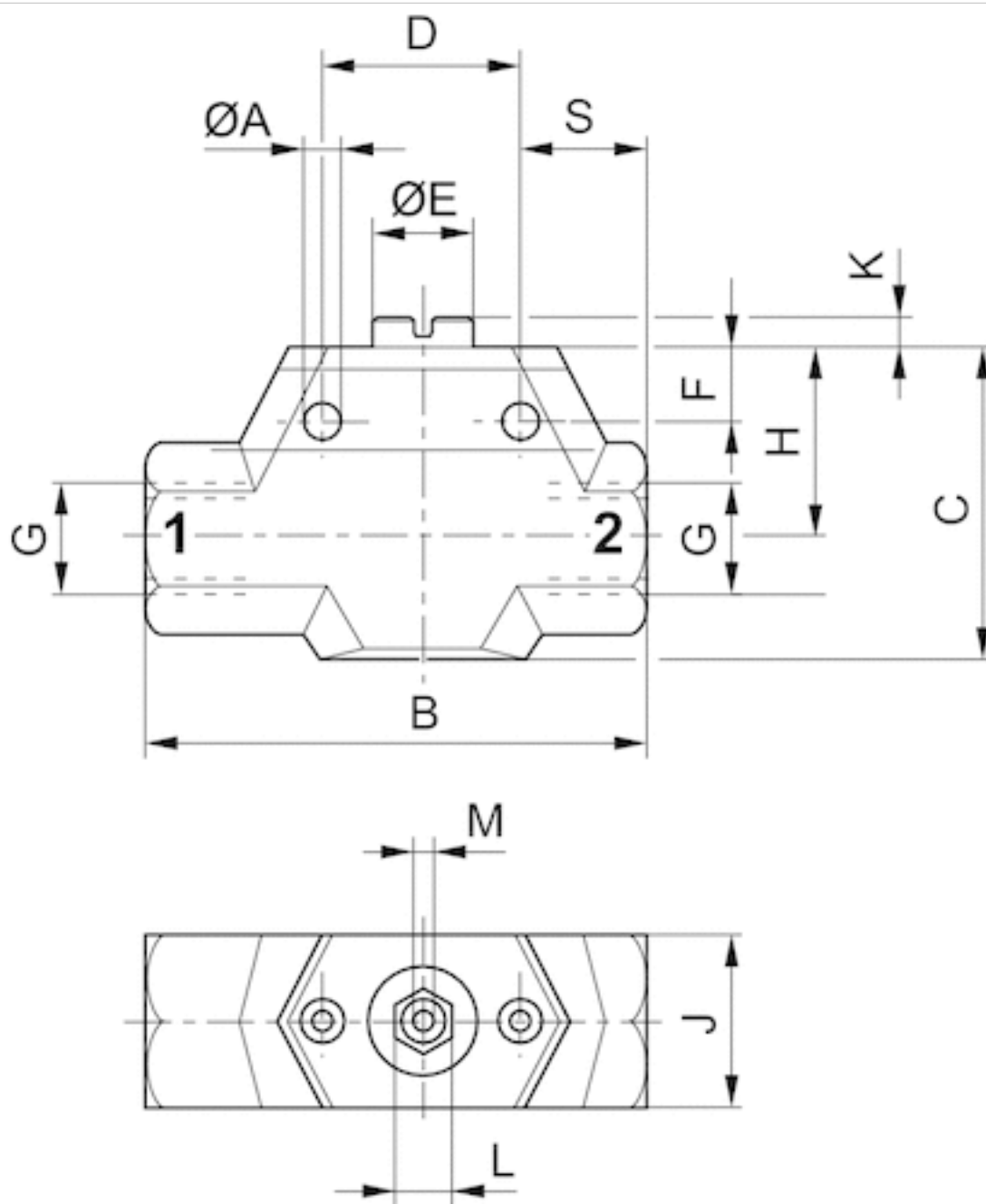
Part No.	Port 1	Flow	Flow conductance	Weight
		Qn 2►1	C-value	
2992344110	G 1/8	280 l/min	0,65 l/(s*bar)	0,13 kg
2992344120	G 1/4	1040 l/min	2,19 l/(s*bar)	0,22 kg
2992344125	G 3/8	1960 l/min	2,77 l/(s*bar)	0,55 kg
2992344130	G 1/2	5250 l/min	7,23 l/(s*bar)	1 kg
2992344140	G 3/4	11340 l/min	16,4 l/(s*bar)	2,2 kg
2992344150	G 1	16000 l/min	32,5 l/(s*bar)	3,6 kg

Technical information

Material	
Housing	Stainless steel, acid-proof
Seals	Fluorocaoutchouc

Dimensions

Dimensions



Dimensions

Part No.	B	C	D	E	F	$\varnothing A$	H	J	K	L	M	S
2992344110	46	29	20	9	9	4.5	19	17	1.5	–	1.5	12
2992344120	61	38	20	9	11	5.5	23	20	3.5	–	1.5	15
2992344125	80	55	30	14	13.5	5.5	31	27	9	–	1.5	19
2992344130	104	65	40	18	16.5	6.5	39.5	34	4	10	–	24
2992344140	142	87	50	28	21.5	8.5	51.5	42	9	10	–	30
2992344150	167	103	60	34	26	8.5	62	52	10.5	10	–	32

Efficient pneumatic solutions, our program: cylinders and drives, valves and valve systems, air supply management



Visit us: [Emerson.com/Aventics](https://emerson.com/aventics)

Your local contact: [Emerson.com/contactus](https://emerson.com/contactus)



Emerson.com



Facebook.com/EmersonAutomationSolutions



LinkedIn.com/company/Emerson-Automation-Solutions



Twitter.com/EMR_Automation

An example configuration is depicted on the title page. The delivered product may thus vary from that in the illustration. Subject to change. This Document, as well as the data, specifications and other information set forth in it, are the exclusive property of AVENTICS GmbH. It may not be reproduced or given to third parties without its consent. Only use the AVENTICS products shown in industrial applications. Read the product documentation completely and carefully before using the product. Observe the applicable regulations and laws of the respective country. When integrating the product into applications, note the system manufacturer's specifications for safe use of the product. The data specified only serve to describe the product. No statements concerning a certain condition or suitability for a certain application can be derived from our information. The information given does not release the user from the obligation of own judgement and verification. It must be remembered that the products are subject to a natural process of wear and aging.

The Emerson logo is a trademark and service mark of Emerson Electric Co. Brand logotype are registered trademarks of one of the Emerson family of companies. All other marks are the property of their respective owners. © 2020 Emerson Electric Co. All rights reserved.
2020-12



CONSIDER IT SOLVED™