

Left end plate

- Can be assembled into blocks



Medium
Protection class
Weight

Compressed air
IP69K
See table below

Technical data

Part No.	Type	Compressed air connection Input [1]	Compressed air connection Exhaust [3 / 5]	Weight
2631481100	metric	G 1/2	G 3/8	0,25 kg
2631481160	inch	1/2-14 NPTF	3/8-18 NPTF	0,418 kg

Multiple plug (48-pin)

Technical information

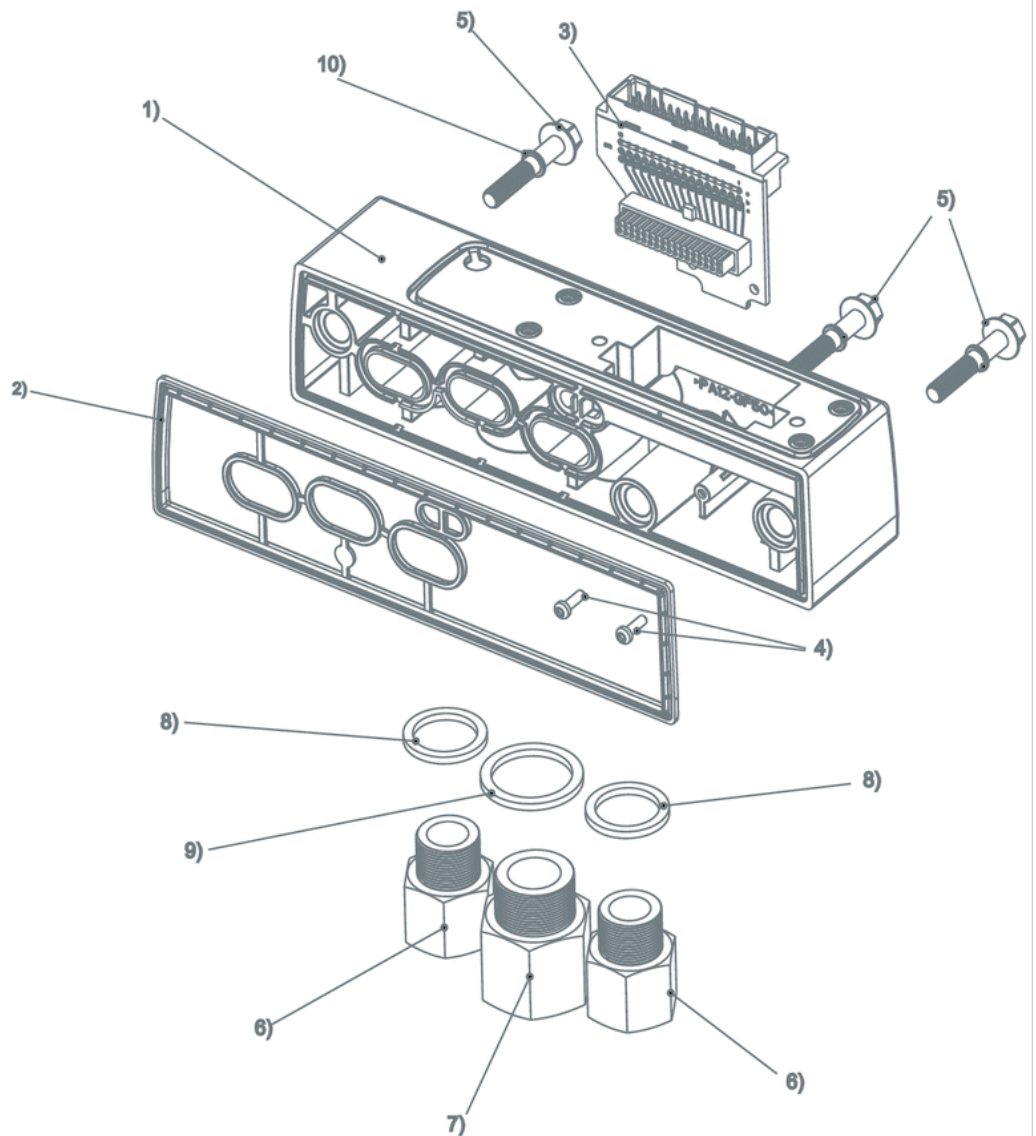
The min. control pressure must be adhered to, since otherwise faulty switching and valve failure may result!
The pressure dew point must be at least 15 °C under ambient and medium temperature and may not exceed 3 °C .
The oil content of compressed air must remain constant during the life cycle.
Use only the approved oils from AVENTICS. Further information can be found in the "Technical information" document (available in the MediaCentre).

Technical information

Material	
Base plate	Polyamide fiber-glass reinforced
Seal	Hydrogenated acrylonitrile butadiene rubber
Screws	Stainless steel

Dimensions

Overview drawing



1) Connection piece 2) Seal 3) Circuit board connection piece 4) Screws 5) Screw M5x30 For additional inch-versions: 6) Adapter G 1/8 - NPTF 1/8 7) Adapter G 3/8 8) Seal for connecting fittings 9) Seal

Efficient pneumatic solutions, our program: cylinders and drives, valves and valve systems, air supply management



Visit us: Emerson.com/Aventics

Your local contact: Emerson.com/contactus



Emerson.com



Facebook.com/EmersonAutomationSolutions



LinkedIn.com/company/Emerson-Automation-Solutions



Twitter.com/EMR_Automation

An example configuration is depicted on the title page. The delivered product may thus vary from that in the illustration. Subject to change. This Document, as well as the data, specifications and other information set forth in it, are the exclusive property of AVENTICS GmbH. It may not be reproduced or given to third parties without its consent. Only use the AVENTICS products shown in industrial applications. Read the product documentation completely and carefully before using the product. Observe the applicable regulations and laws of the respective country. When integrating the product into applications, note the system manufacturer's specifications for safe use of the product. The data specified only serve to describe the product. No statements concerning a certain condition or suitability for a certain application can be derived from our information. The information given does not release the user from the obligation of own judgement and verification. It must be remembered that the products are subject to a natural process of wear and aging.

The Emerson logo is a trademark and service mark of Emerson Electric Co. Brand logotype are registered trademarks of one of the Emerson family of companies. All other marks are the property of their respective owners. © 2020 Emerson Electric Co. All rights reserved.
2020-12



CONSIDER IT SOLVED™