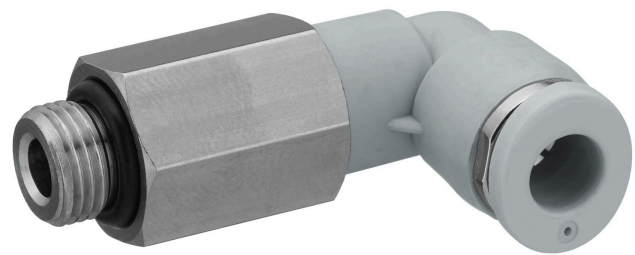


QR1-S-RVL standard series

2122106180

QR1-S standard series



Technical data

Industry
Industrial

Fitting type
Long elbow fitting

Compressed air connection type
External thread

Port G
G 1/8

Compressed air connection type 2
push-in fitting

Port D
Ø 6

Note
Due to product optimisation, the delivered article may currently deviate from the dimensions shown.

Type
QR1-S-RVL

Working pressure min.
-0.95 bar

Working pressure max
10 bar

Min. ambient temperature
0 °C

Max. ambient temperature
60 °C

Delivery unit
10 piece

Weight
0.0306 kg

Material

Housing material
Polyamide

Seal material
Acrylonitrile butadiene rubber

Material tooth lock washer
Stainless Steel

Material release ring
Polyamide

Material release ring holder
Die cast zinc

Surface release ring holder
nickel-plated

Material thread
Brass

Surface thread
nickel-plated

Part No.
2122106180

Dimensions in mm

