

Clevis mounting MP2, Series CM1

- Suitable piston Ø 32 40 50 63 80 100 mm
- for series KPZ



Technical data

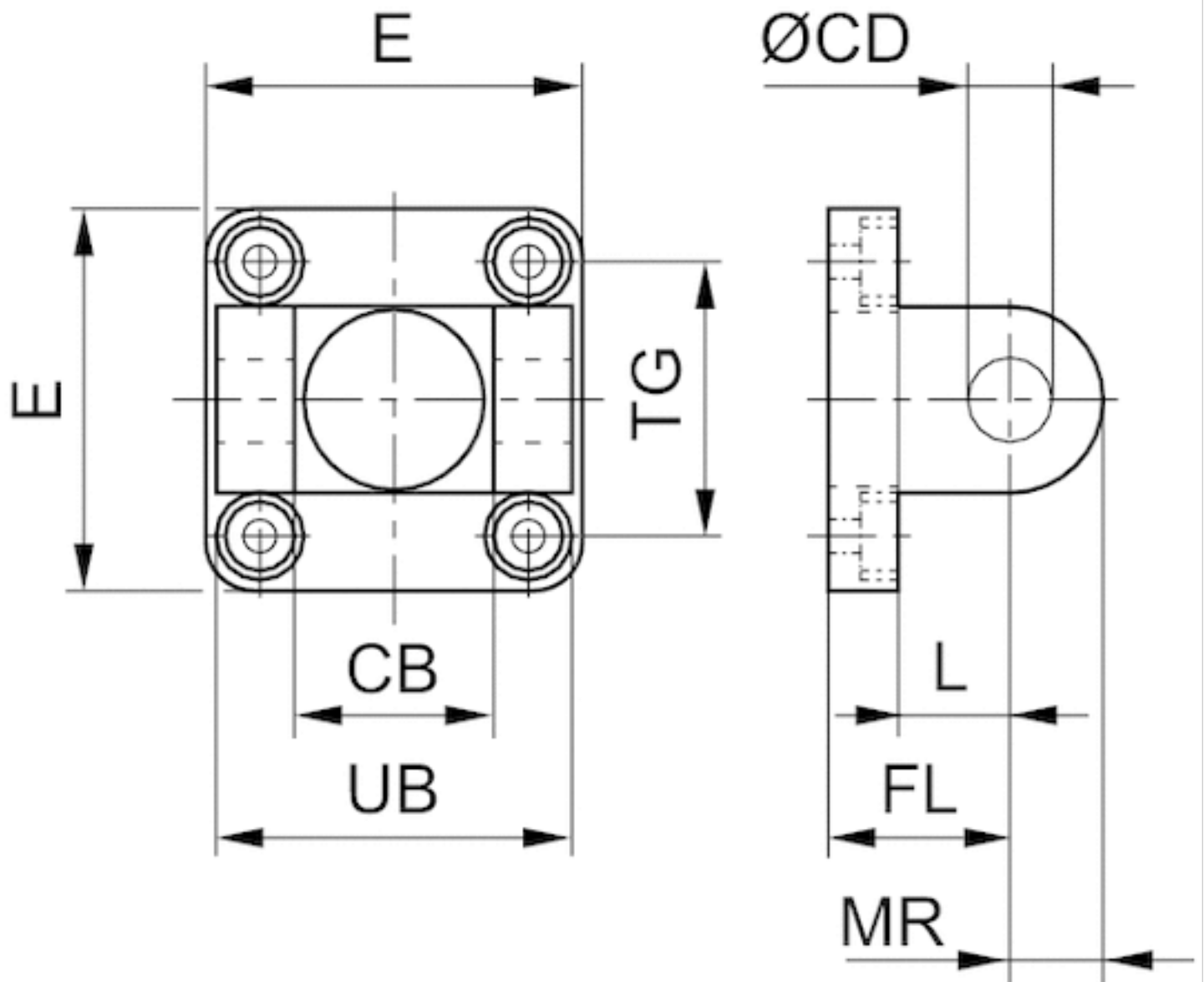
Part No.	Piston Ø	Swivel bearing Ø
1827002302	32 mm	10 mm
1827002303	40 mm	12 mm
1827002304	50 mm	12 mm
1827002305	63 mm	16 mm
1827002306	80 mm	16 mm
1827002307	100 mm	20 mm

Scope of delivery: clevis mounting incl. mounting screws

Technical information

Material	
Material	Steel
	galvanized
Screws	Steel
	galvanized

Dimensions



Dimensions

Part No.	Piston Ø	CB H14	Ø CD H9	E	FL ±0.2	L min.	MR max.	UB h13	TG
1827002302	32 mm	26	10	48	22	13	10	45	32 ±0.5
1827002303	40 mm	28	12	58	25	16	12.5	52	42 ±0.5
1827002304	50 mm	32	12	66	27	16	12.5	60	50 ±0.6
1827002305	63 mm	40	16	83	32	21	15	70	62 ±0.6
1827002306	80 mm	50	16	102	36	23	15	90	82 ±0.7
1827002307	100 mm	60	20	123	41	26	20	110	103 ±0.7

Efficient pneumatic solutions, our program: cylinders and drives, valves and valve systems, air supply management



Visit us: [Emerson.com/Aventics](https://www.emerson.com/Aventics)

Your local contact: [Emerson.com/contactus](https://www.emerson.com/contactus)



Emerson.com



Facebook.com/EmersonAutomationSolutions



LinkedIn.com/company/Emerson-Automation-Solutions



Twitter.com/EMR_Automation

An example configuration is depicted on the title page. The delivered product may thus vary from that in the illustration. Subject to change. This Document, as well as the data, specifications and other information set forth in it, are the exclusive property of AVENTICS GmbH. It may not be reproduced or given to third parties without its consent. Only use the AVENTICS products shown in industrial applications. Read the product documentation completely and carefully before using the product. Observe the applicable regulations and laws of the respective country. When integrating the product into applications, note the system manufacturer's specifications for safe use of the product. The data specified only serve to describe the product. No statements concerning a certain condition or suitability for a certain application can be derived from our information. The information given does not release the user from the obligation of own judgement and verification. It must be remembered that the products are subject to a natural process of wear and aging.

The Emerson logo is a trademark and service mark of Emerson Electric Co. Brand logotype are registered trademarks of one of the Emerson family of companies. All other marks are the property of their respective owners. © 2020 Emerson Electric Co. All rights reserved.
2020-12



CONSIDER IT SOLVED™