

Base plate, Ports 2 and 4 on side, 1,2 and 4 also on bottom

- standard ISO 5599-1
- Frame size ISO 1
- type H
- Compressed air connection output G 1/4
- Can be assembled into blocks



Standards	ISO 5599-1
Working pressure min./max.	0 ... 16 bar
Ambient temperature min./max.	-15 ... 70 °C
Medium temperature min./max.	-15 ... 80 °C
Medium	Compressed air
Grid dimension	43 mm
Exhaust type	Ports separated
Mounting screw	with hexagon socket
Weight	See table below

Technical data

Part No.	Compressed air connection Input [1]	Compressed air connection Output [2 / 4]
1825503286	-	G 1/4
1825503288	-	G 1/4
1825503290	G 1/4	G 1/4
1825503292	G 1/4	G 1/4

Part No.	Compressed air connection Pilot connection [12]	Compressed air connection Pilot control exhaust [R]	Weight	Fig.
1825503286	M5	M5	0,24 kg	Fig. 1
1825503288	M5	M5	0,24 kg	Fig. 2
1825503290	M5	M5	0,27 kg	Fig. 3
1825503292	M5	M5	0,27 kg	Fig. 4

Part No.	
1825503286	1)
1825503288	2)
1825503290	3)
1825503292	4)

Scope of delivery incl. seal and mounting screws

1) Ports 2 and 4 on side, control pressure connection 12 and 14: single connection

2) Ports 2 and 4 on side, control pressure connection 12 and 14: central manifold

3) Ports 2 and 4 on side, 1,2 and 4 also on bottom, control pressure connection 12 and 14: single connection

4) Ports 2 and 4 on side, 1,2 and 4 also on bottom, control pressure connection 12 and 14: central manifold

Technical information

The min. control pressure must be adhered to, since otherwise faulty switching and valve failure may result!
The pressure dew point must be at least 15 °C under ambient and medium temperature and may not exceed 3 °C .
The oil content of compressed air must remain constant during the life cycle.
Use only the approved oils from AVENTICS. Further information can be found in the "Technical information" document (available in the MediaCentre).

Technical information

Material	
Housing	Die-cast aluminum
Base plate	Die-cast aluminum
Seal	Acrylonitrile butadiene rubber

Dimensions

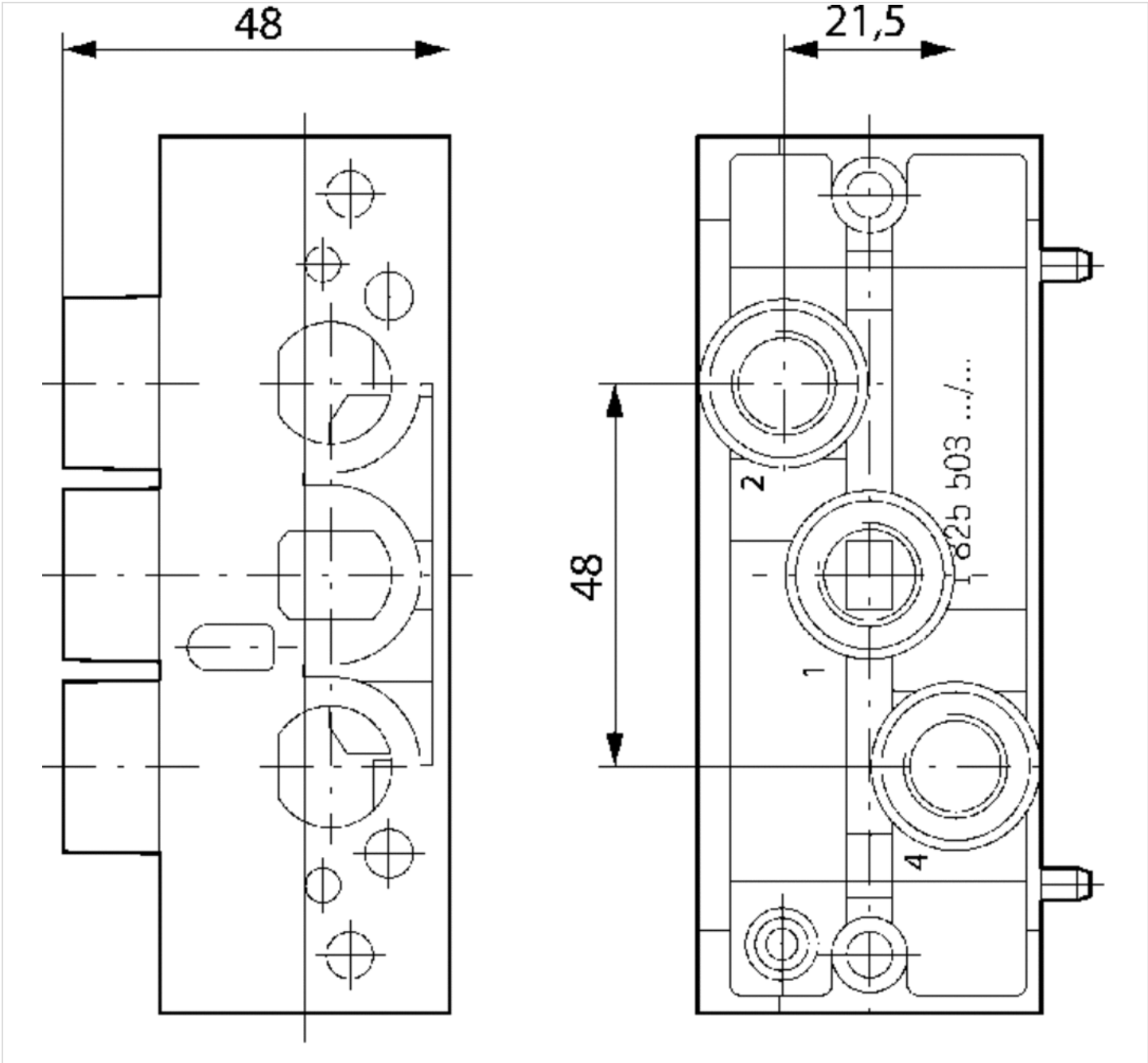
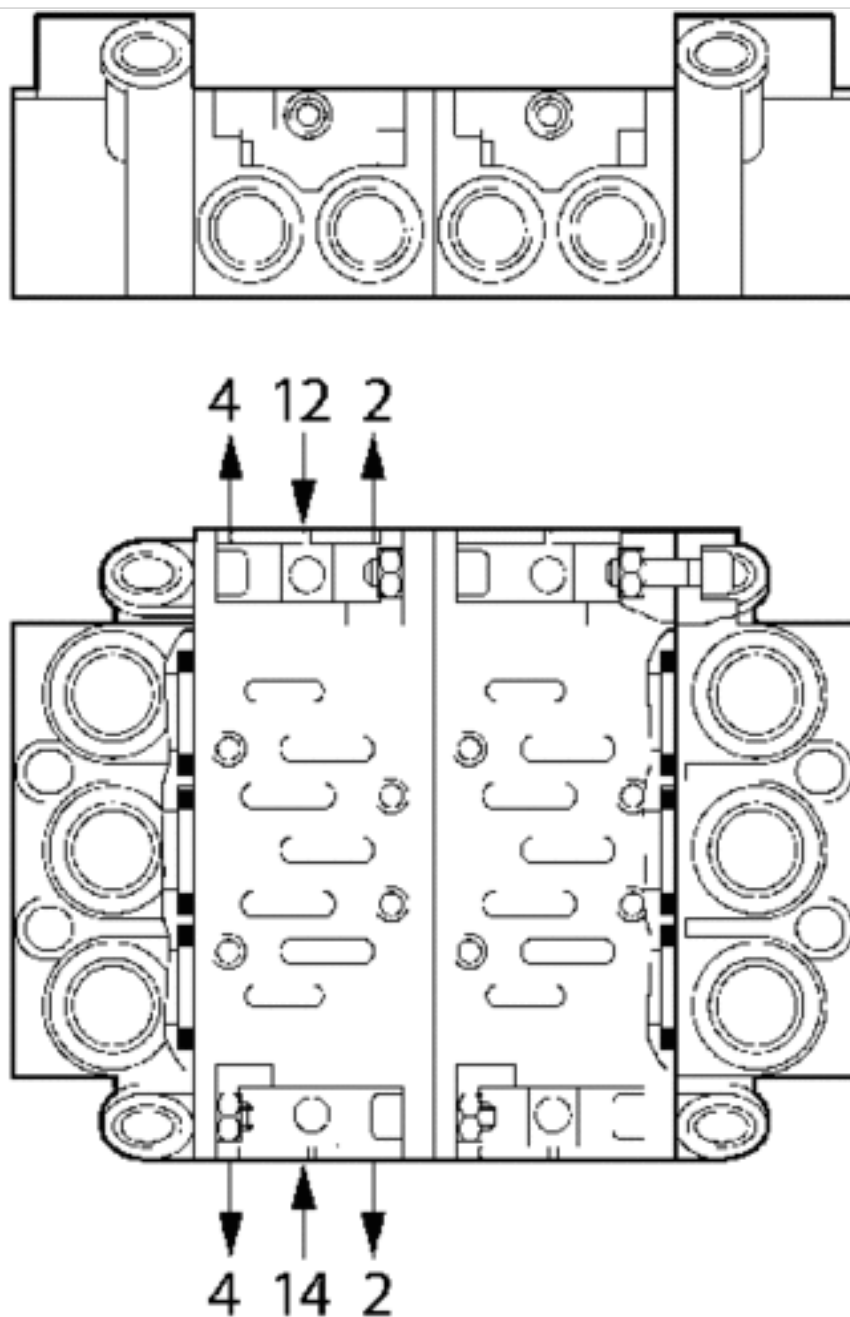


Fig. 1, ports 2 and 4 on side, Control pressure connection 12+14: single connection



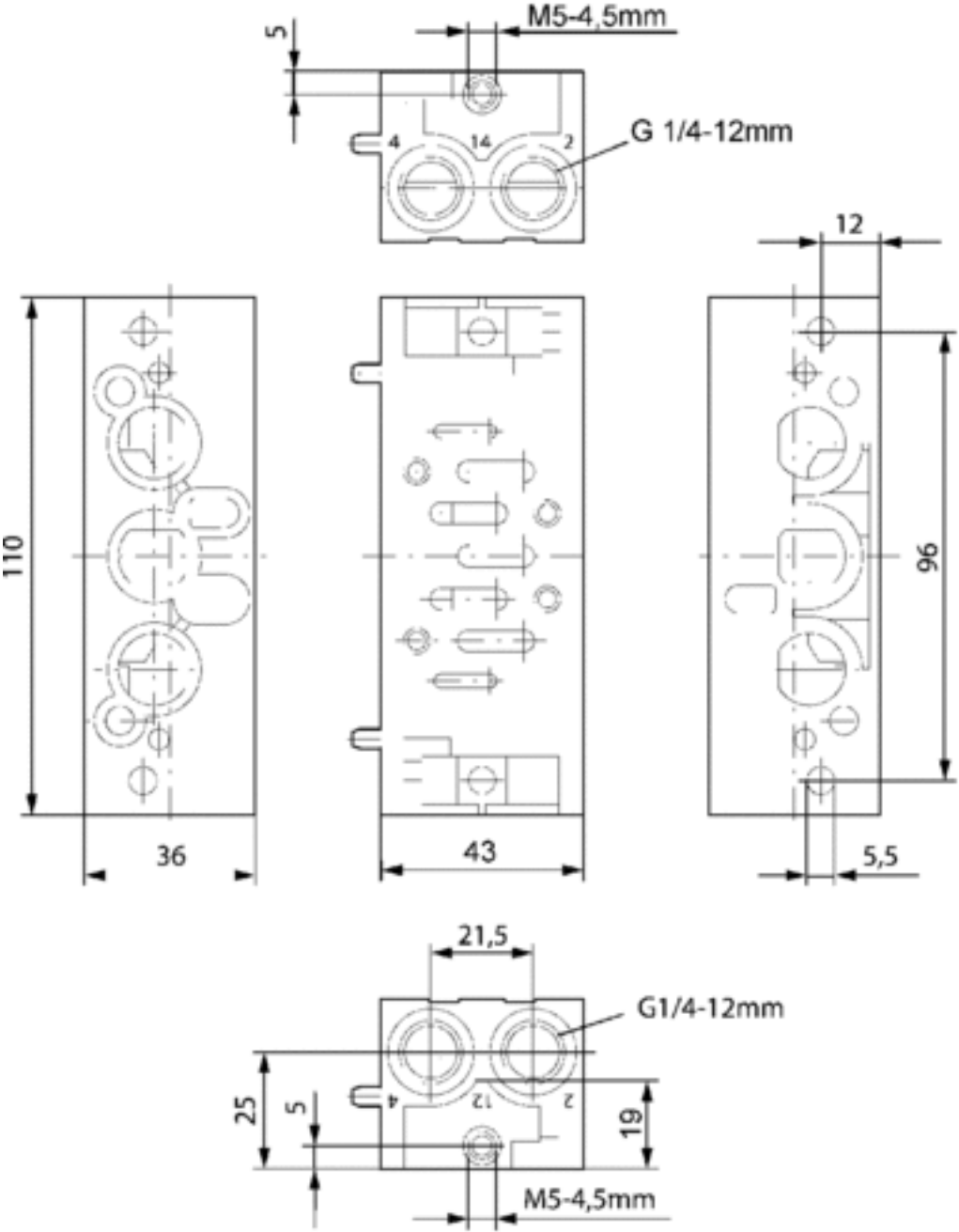
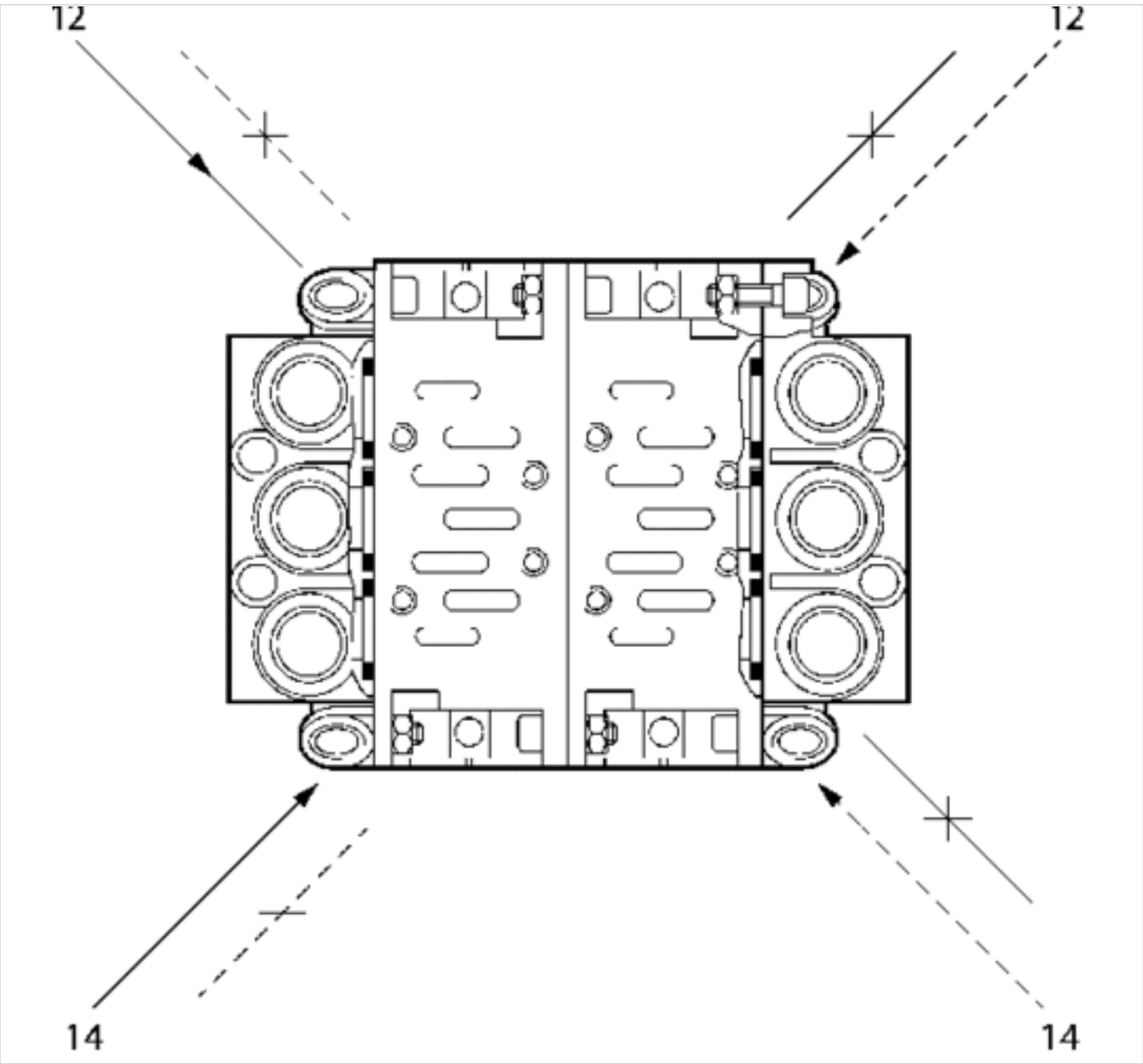


Fig. 2, ports 2 and 4 on side, Control pressure connection 12+14: central manifold



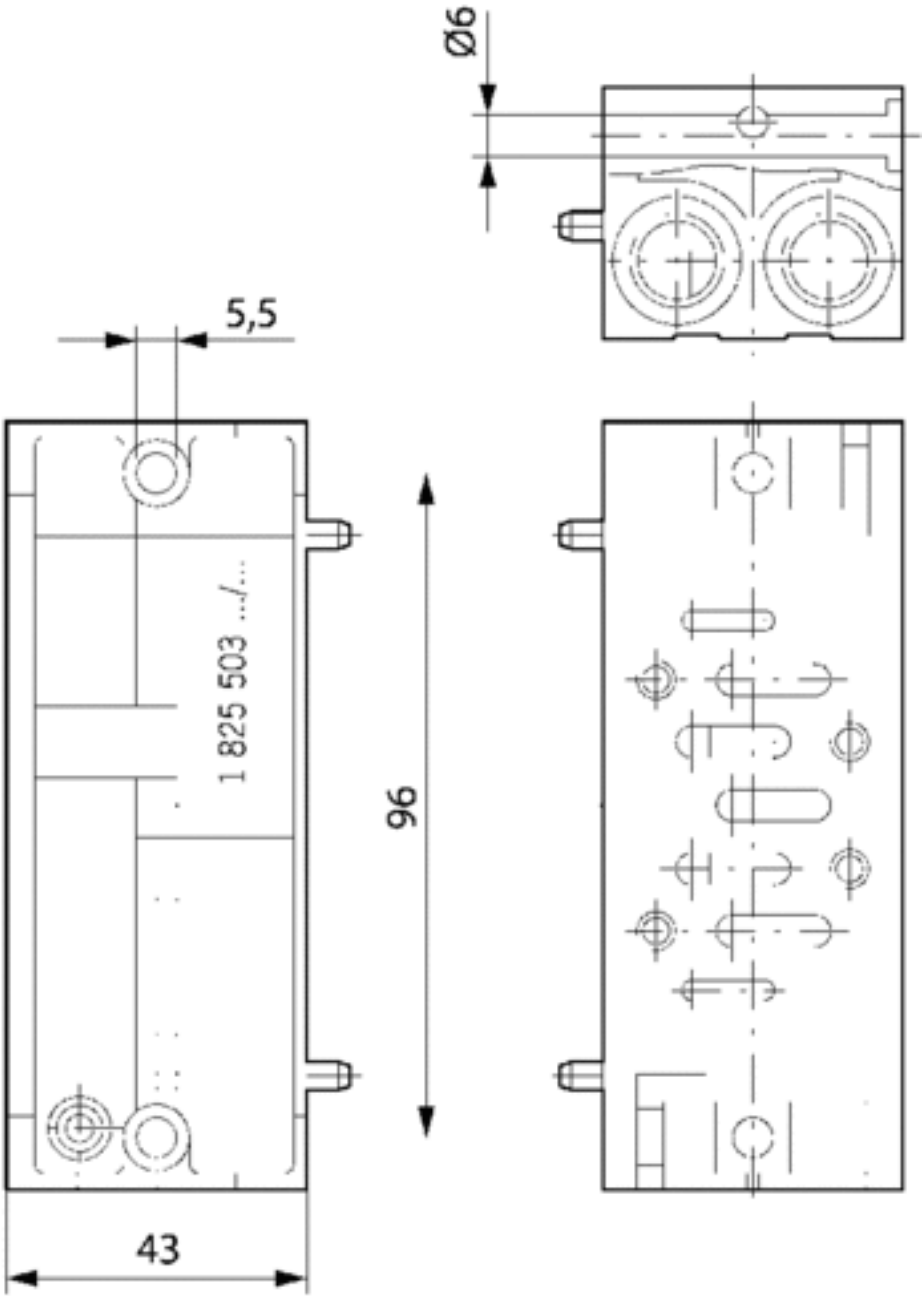


Fig. 3, Ports 2 and 4 on side, 1,2 and 4 also on bottom, Control pressure connection 12+14: single connection

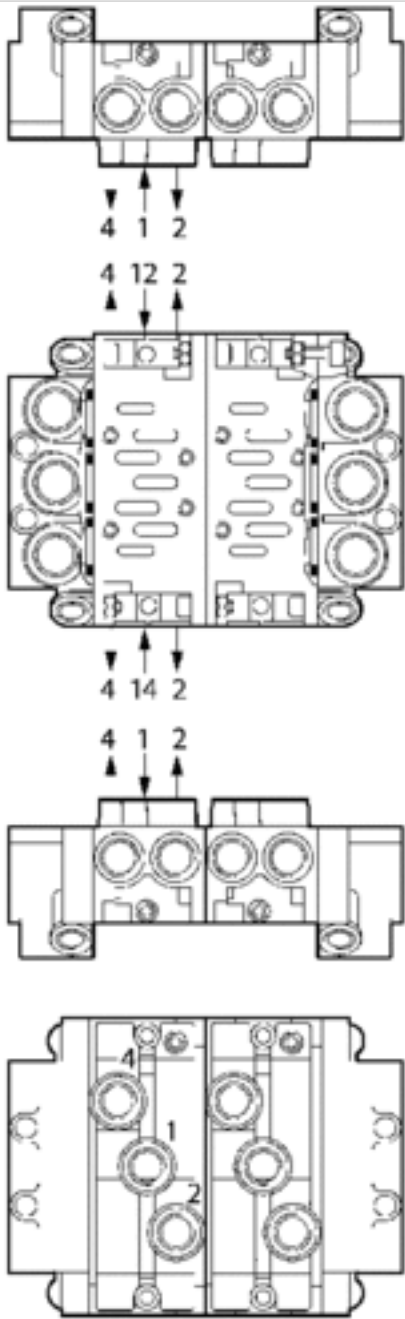
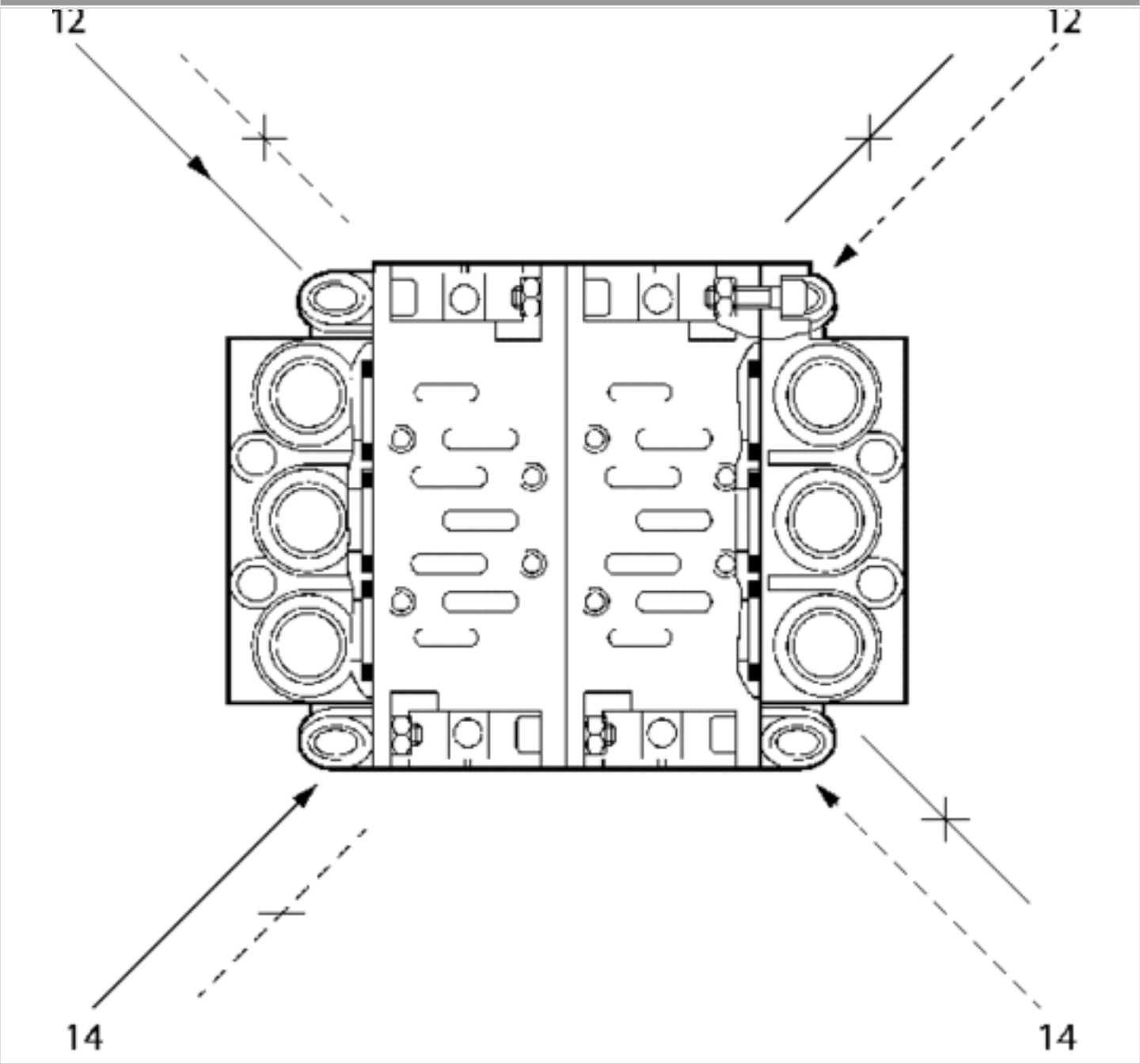


Fig. 4, Ports 2 and 4 on side, 1,2 and 4 also on bottom, Control pressure connection 12+14: central manifold



Efficient pneumatic solutions, our program: cylinders and drives, valves and valve systems, air supply management



Visit us: [Emerson.com/Aventics](https://www.emerson.com/Aventics)

Your local contact: [Emerson.com/contactus](https://www.emerson.com/contactus)



Emerson.com



Facebook.com/EmersonAutomationSolutions



LinkedIn.com/company/Emerson-Automation-Solutions



Twitter.com/EMR_Automation

An example configuration is depicted on the title page. The delivered product may thus vary from that in the illustration. Subject to change. This Document, as well as the data, specifications and other information set forth in it, are the exclusive property of AVENTICS GmbH. It may not be reproduced or given to third parties without its consent. Only use the AVENTICS products shown in industrial applications. Read the product documentation completely and carefully before using the product. Observe the applicable regulations and laws of the respective country. When integrating the product into applications, note the system manufacturer's specifications for safe use of the product. The data specified only serve to describe the product. No statements concerning a certain condition or suitability for a certain application can be derived from our information. The information given does not release the user from the obligation of own judgement and verification. It must be remembered that the products are subject to a natural process of wear and aging.

The Emerson logo is a trademark and service mark of Emerson Electric Co. Brand logotype are registered trademarks of one of the Emerson family of companies. All other marks are the property of their respective owners. © 2020 Emerson Electric Co. All rights reserved.
2020-12



CONSIDER IT SOLVED™